

GE
Industrial Solutions

Commercial Metering Switchboards

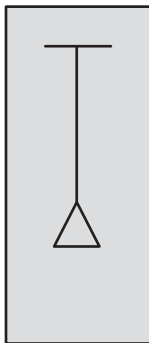


imagination at work

Section Types

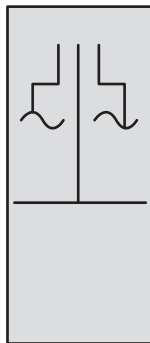
- UL Listed, EUSERC, Non-EUSERC Lever Bypass
- 208Y/120V, 240Y/120V or 480Y/277V
- 100 kAIC, 150 kAIC up to 4000A, 200 kAIC at 3000A and 4000A
- 400, 600, 800, 1000, 1200, 2000, 3000, 4000A
- NEMA 1 or 3R enclosure
- Bottom feed, center feed, and top busway
- Cu or Al bus
- Refer to Speedi for all sizing

Underground Pull Section



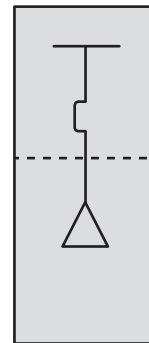
- 100 kAIC
- Bottom feed
- Cu or Al bus
- NEMA 1 or 3R

Top Incoming Busway



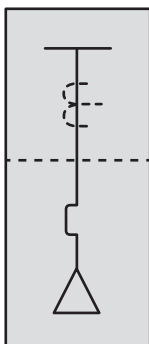
- 400A-4000A
- NEMA 1 or 3R

Half Height Pull Sections with Single Main Breaker



- 400A-2000A
- G, K and PBII circuit breakers
- HPC and BPS fused switches
- Device padlocking
- SE Barriers
- Equipment ground fault protection on 1200A-2000A (optional on 400A-1000A)
- Front access

Large Tenant Metering



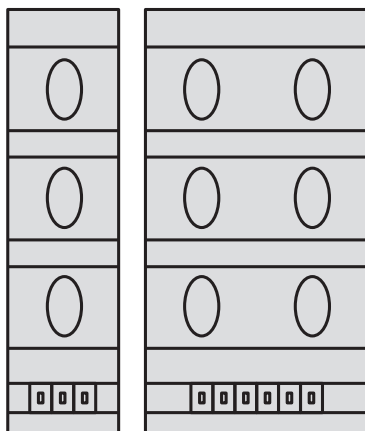
- Hot Sequence Metering
- SG, SK, PBII, BPS, HPC
- Bottom or top exit
- Device padlocking
- Equipment ground fault protection
- Mounting provisions for CTs
- Isolating barriers
- Hinged sealable cover
- Transformer rated meter socket (EUSERC only)
- Front access
- Middle or bottom mounted neutral
- Lever bypass meter sockets available (Non-EUSERC only)
- Submains
- Rear load wire way spacing 8" minimum

Distribution Panel



- Interior 2000A, Cu bus, 100 kAIC
- 13, 18x distribution space
- Bolt-on and plug-in
- 3Ph 4W
- Spectra main breaker or main lug only interior
- CT compartment up to 2000A
- Front neutral access
- Submains

Small Tenant Metering

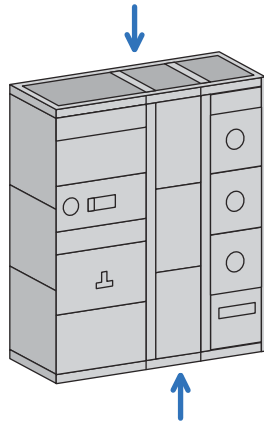


- Cold and hot sequences (hot is default)
- Tenant disconnects SF, T-fuse pullout J fuse constructions:
 - SF (100A, 200A)
 - T-fuse pull out (100A, 200A)
- 3Ph 4W Service
- 3 pole, 2 pole disconnects
- 600A-4000A horizontal bus
- 25" minimum depth for top or bottom exit - to 60"
- Provisions for field installable socket and breaker additions
- Front access
- 100% rated neutral; standard ground rating
- Middle (EUSERC only) or bottom (Non-EUSERC only) mounted neutral
- Ringless style sockets, cover contains ring
- Lever bypass meter sockets available (Non-EUSERC only)
- Service entrance barriers (Non-EUSERC only)
- 100 kAIC
- Top and bottom feed exit
- Test bypass block meter socket available
- 5, 7, 13 locking jaw sockets
- Flash shields
- Line lugs at top, customer load connection at bottom
- All disconnects lockable in OFF position
- Rear load wire way spacing 3" minimum
- 3-pack (20" wide) available for both EUSERC and Non-EUSERC
- 6-pack (35" wide) available for EUSERC only

Options

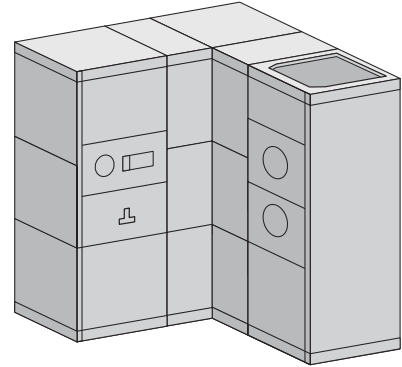
Side Load Wireway

- 15" minimum width, copper or aluminum bus



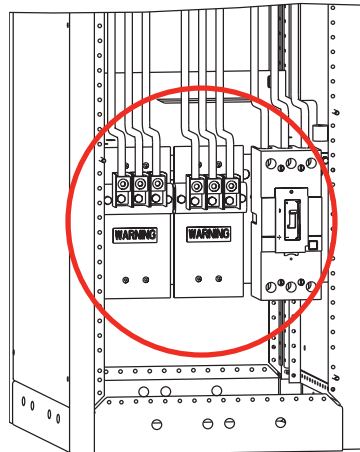
Corner Section

- Copper or aluminum bus
- Available in Speedi
- In most cases a 15" section will be added on each side of the corner

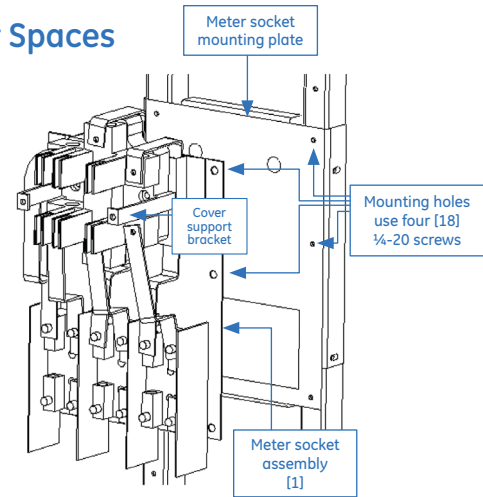


UL Approved Field-Installable Small Tenant Kits

Prewired section meets UL



Meter Spaces



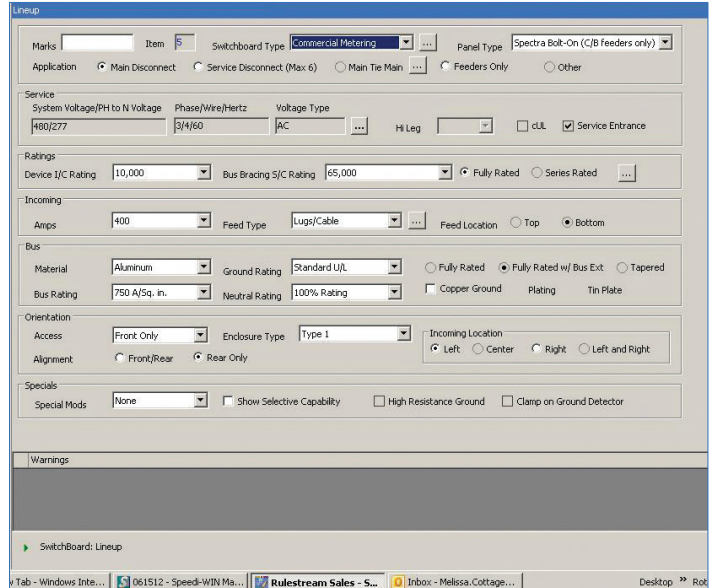
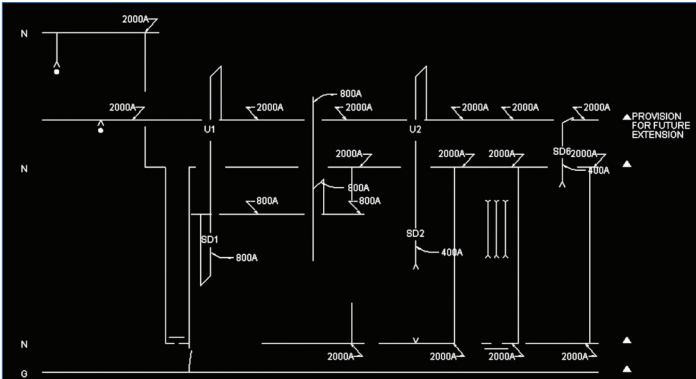
If Meter Socket exists (chose ST-200A or ST-100A in Speedi) choose the following:

| Disconnect | Rating | Cat. No. |
|--------------------|----------------|---------------|
| 35 kAIC SF Breaker | 277/480V, 200A | CM203MSB600V |
| | 277/480V, 100A | CM103MSB600V |
| 65 kAIC SF Breaker | 277/480V, 200A | CM203MSB600VH |
| | 277/480V, 100A | CM103MSB600VH |
| | 120/208V, 200A | CM203MSB240V |
| | 120/208V, 100A | CM103MSB240V |
| T-Fuse Pullout | 277/480V, 200A | CM203MSTF600V |
| | 120/208V, 200A | CM203MSTF240V |
| FD1 Switch | 277/480V, 200A | CM200MSJF600V |
| | 277/480V, 100A | CM200MSJF240V |

If Meter Socket does not exist (chose ST-200A Space or ST-100A Space in Speedi) choose the following:

| Disconnect | Rating | Cat. No. |
|--------------------|----------------|---------------|
| 35 kAIC SF Breaker | 277/480V, 200A | CM200A35K480V |
| | 277/480V, 100A | CM100A35K480V |
| 65 kAIC SF Breaker | 277/480V, 200A | CM200A65K480V |
| | 277/480V, 100A | CM100A65K480V |
| | 120/208V, 200A | CM200A65K208V |
| | 120/208V, 100A | CM100A65K208V |
| | 120/240V, 200A | CM200A65K240V |
| | 120/240V, 100A | CM100A65K240V |
| T-Fuse Pullout | 277/480V, 200A | CM200ATF480V |
| | 120/208V, 200A | CM200ATF208V |
| | 120/240V, 200A | CM200ATF240V |

Commercial Metering Now Available On



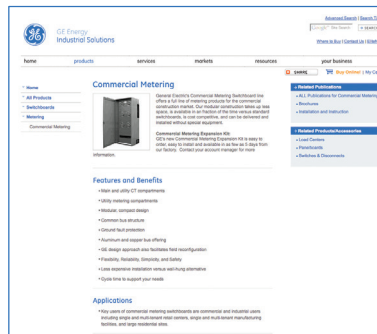
Service Solutions

GE RESOLVe ensures your satisfaction by giving you fast and reliable responses to warranty issues, field service requests, missing parts problems or product returns. GE's national network of factory authorized service operations is ready to meet all your installation, start-up, testing and maintenance needs. **1-888-GE-RESOLVe**



Web Solutions

www.geindustrial.com is where you'll find complete, easy-to-use information on the power of the GE Energy package: products, services, support, and solutions.



GE
Industrial Solutions
41 Woodford Avenue
Plainville, CT 06062
www.geindustrial.com

© 2013 General Electric Company



SPEEDI WIN™ is a trademark of General Electric Company

Information provided is subject to change without notice. Please verify all details with GE. All values are design or typical values when measured under laboratory conditions, and GE makes no warranty or guarantee, express or implied, that such performance will be obtained under end-use conditions.