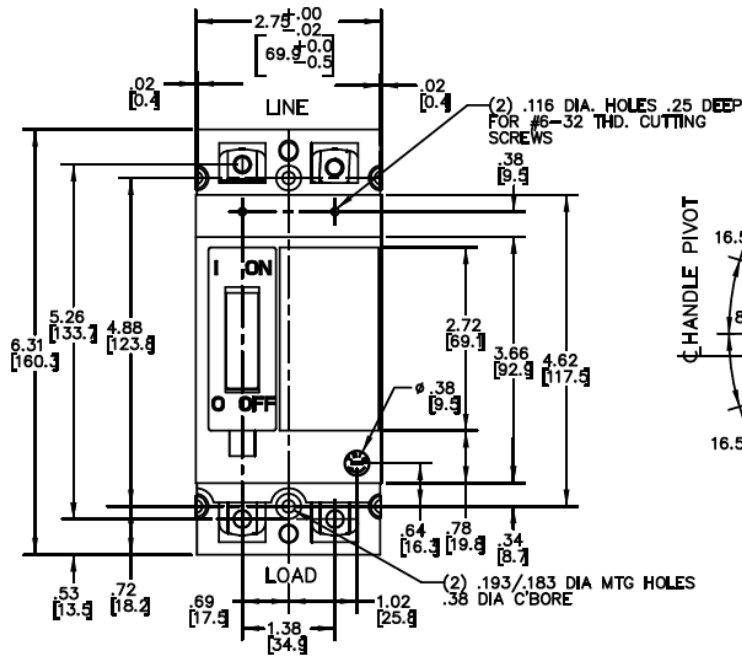
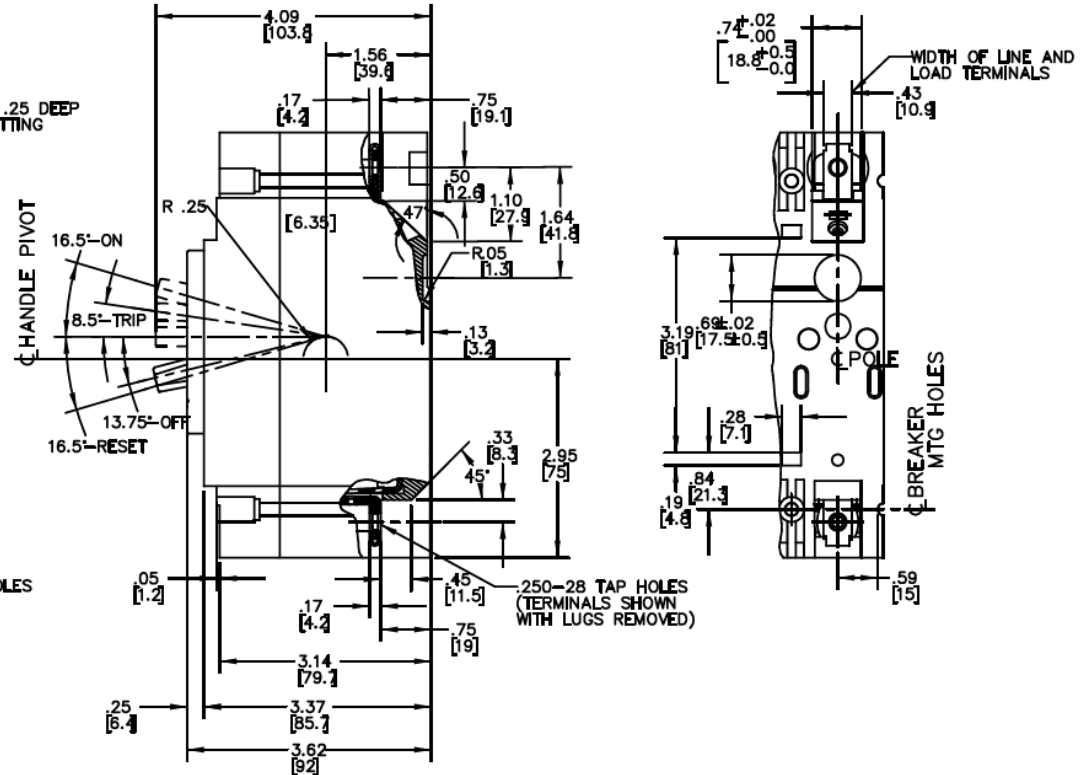


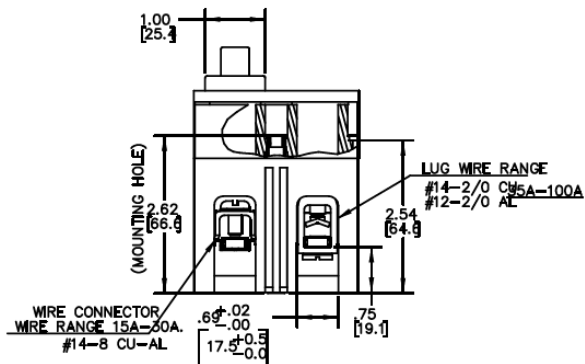
### Front View



### Side View



### Bottom View



| Breaker Amps | Load Side Wire Range Size              |
|--------------|--|
| 15-100A      | (1) #14 - #3 (CU)<br>(1) #12 - #1 (AL) |



30A 2PH TEB BREAKER 10K @ 120/240V  
FOR USE WITH GE METER STACKS- 225A SOCKETS

| PUBLICATION # | CAT NO    | DWG DATE   | REV # |
|---------------|-----------|------------|-------|
| DEE-829       | TEB122030 | 12/14/2015 | 01    |