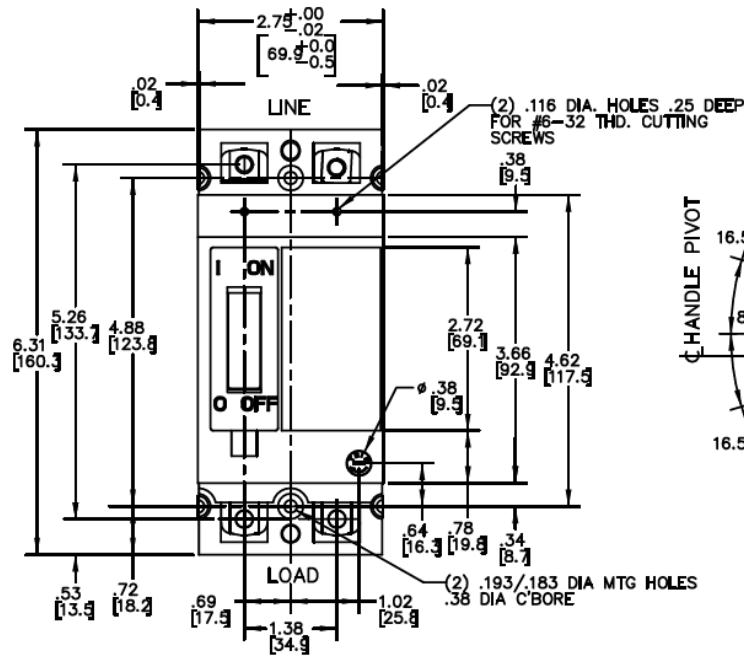
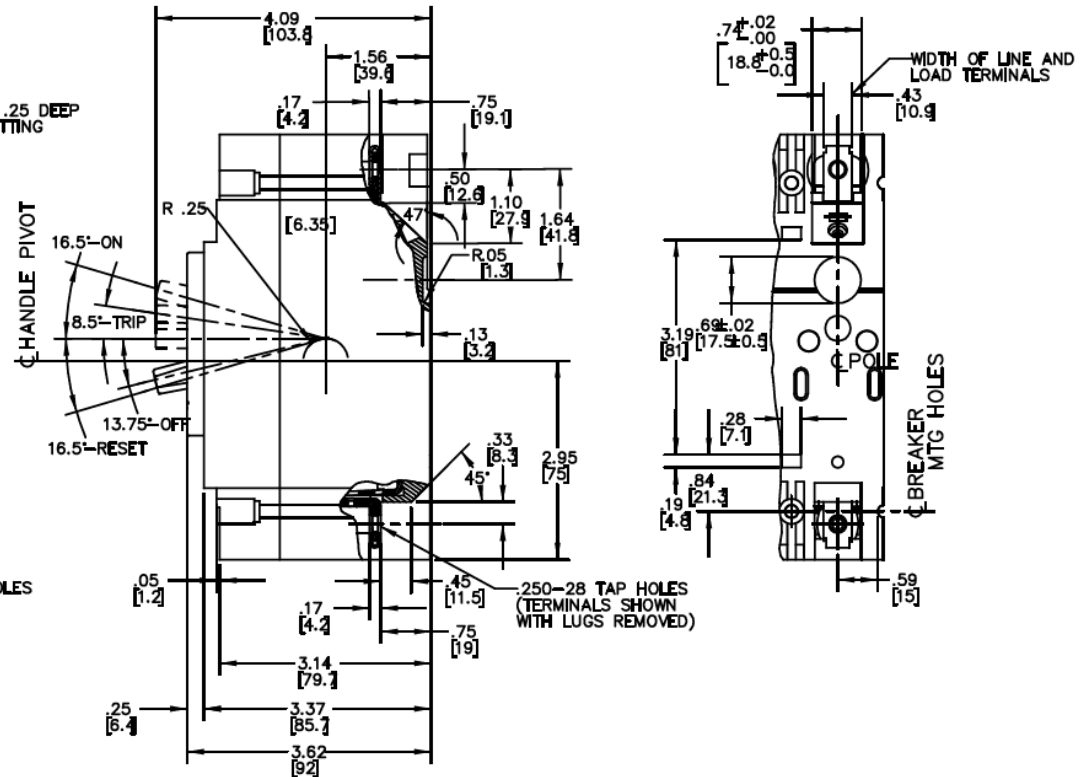


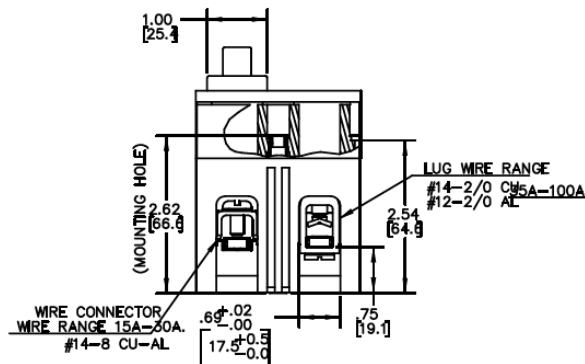
Front View



Side View



Bottom View



| Breaker Amps | Load Side Wire Range Size |
|--------------|--|
| 15-100A | (1) #14 - #3 (CU) (1) #12 - #1 (AL) |



imagination at work

35A 2PH TEB BREAKER 10K @ 120/240V
FOR USE WITH GE METER STACKS- 225A SOCKETS

| PUBLICATION # | CAT NO | DWG DATE | REV # |
|---------------|-----------|------------|-------|
| DEE-830 | TEB122035 | 12/14/2015 | 01 |