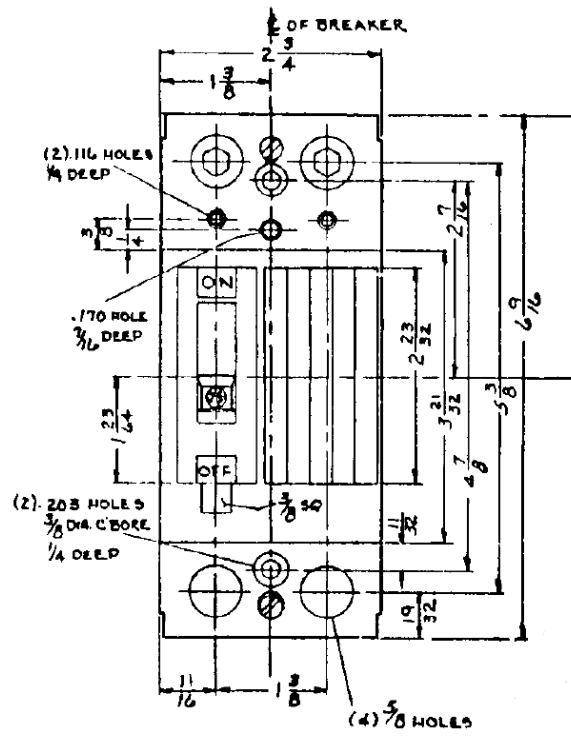
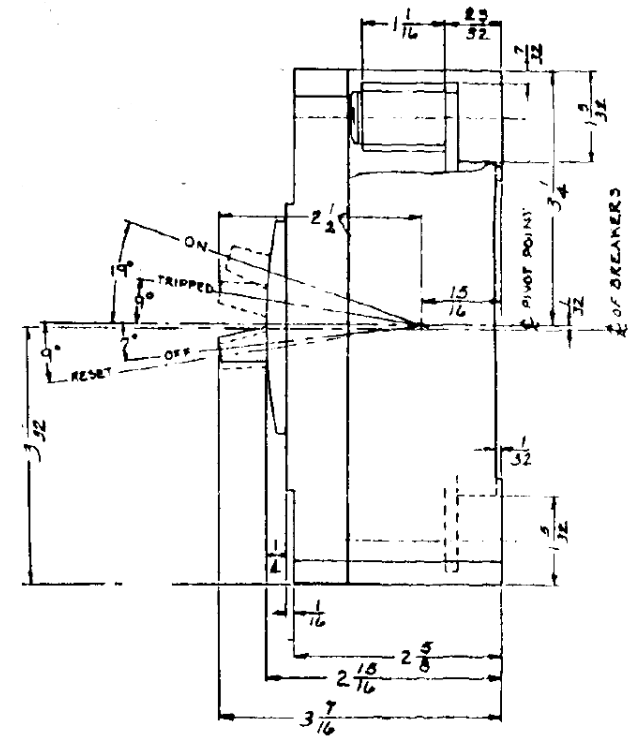


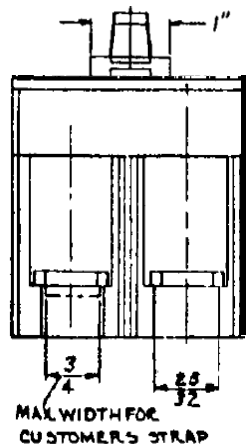
Front View



Side View



Bottom View



Breaker Amps	Load Side Wire Range Size
100-200A	(1) #1-300MCM (AL/CU)



imagination at work

125A 2PH TQD BREAKER 10K @ 120/240V
FOR USE W/ GE METER STACKS - 200A & 225A SOCKETS

PUBLICATION #	CAT NO	DWG DATE	REV #
DEE-866	TQD22125	12/14/2015	01