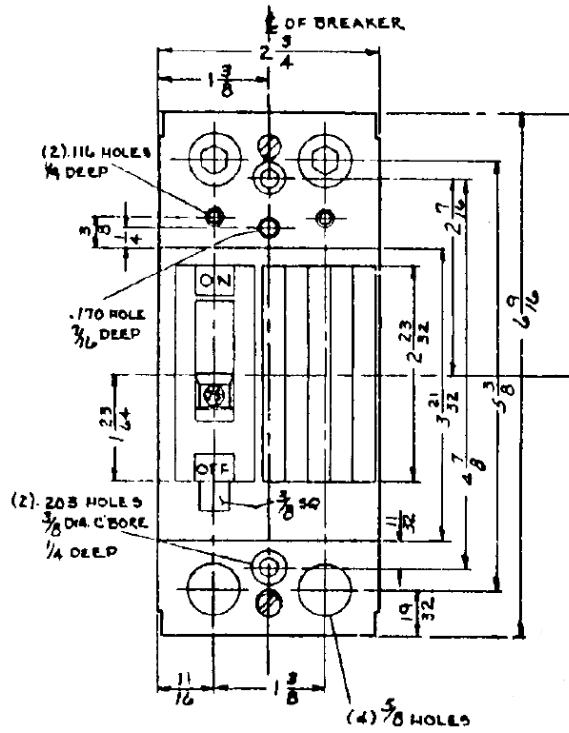
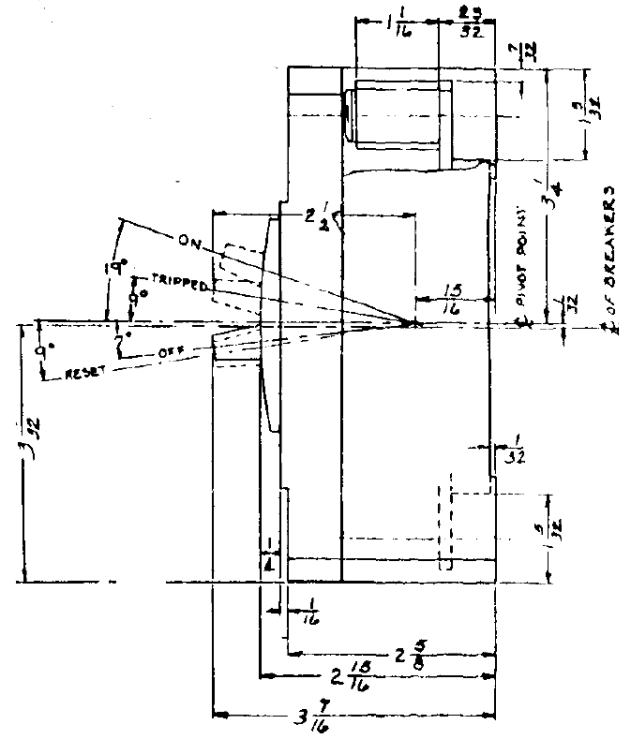


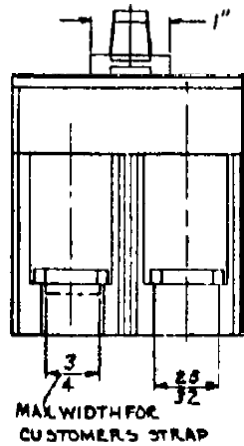
Front View



Side View



Bottom View



Breaker Amps	Load Side Wire Range Size
100-200A	(1) #1-300MCM (AL/CU)



imagination at work

175A 2PH TQD BREAKER 10K @ 120/240V
FOR USE W/ GE METER STACKS – 200 & 225A SOCKETS

PUBLICATION #	CAT NO	DWG DATE	REV #
DEE-868	TQD22175	12/14/2015	01