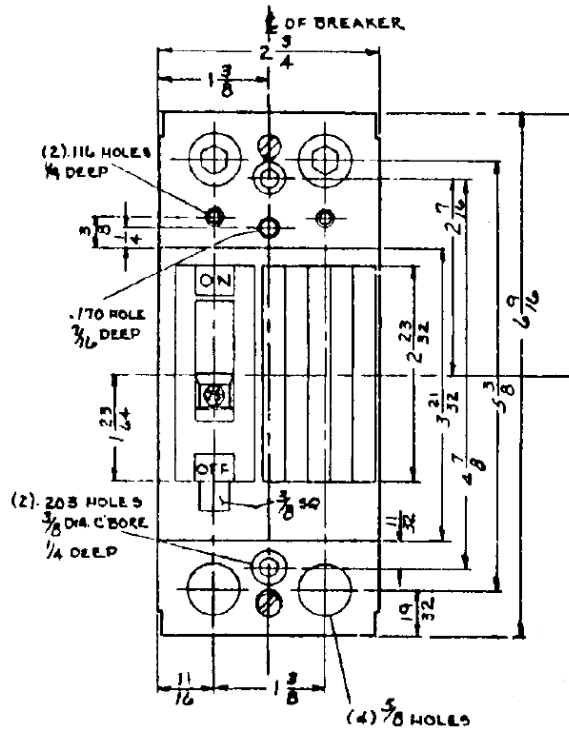
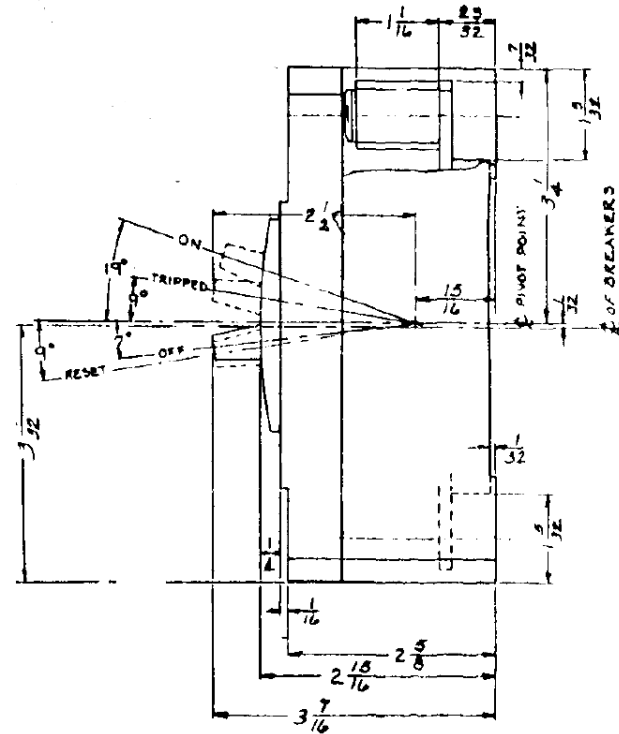


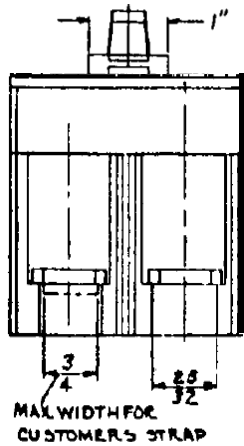
### Front View



### Side View



### Bottom View



Breaker Amps	Load Side Wire Range Size
100-200A	(1) #1-300MCM (AL/CU)



175A 2PH THQD BREAKER 22K @ 120/240V  
FOR USE W/ GE METER STACKS – 200 & 225A SOCKETS

PUBLICATION #	CAT NO	DWG DATE	REV #
DEE-872	THQD22175	12/14/2015	01