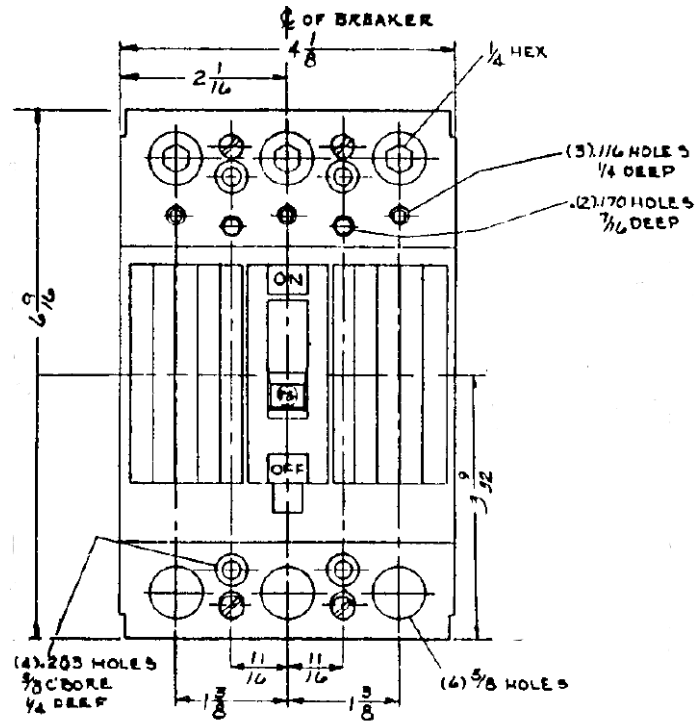
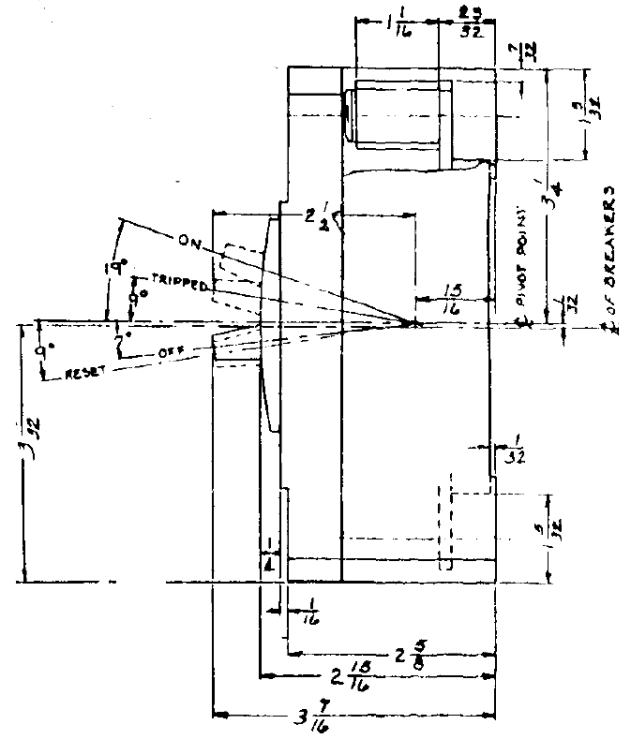


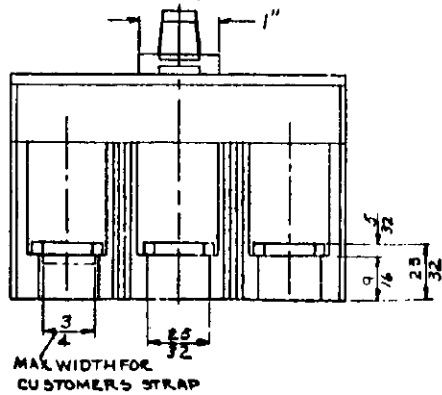
### Front View



### Side View



### Bottom View



Breaker Amps	Load Side Wire Range Size
100-200A	(1) #1-300MCM (AL/CU)



imagination at work

125A 3PH TQD BREAKER 10K @ 208Y/120V  
FOR USE WITH GE METER STACKS – 200/225A SOCKETS

PUBLICATION #	CAT NO	DWG DATE	REV #
DEE-874	TQD32125	12/14/2015	01