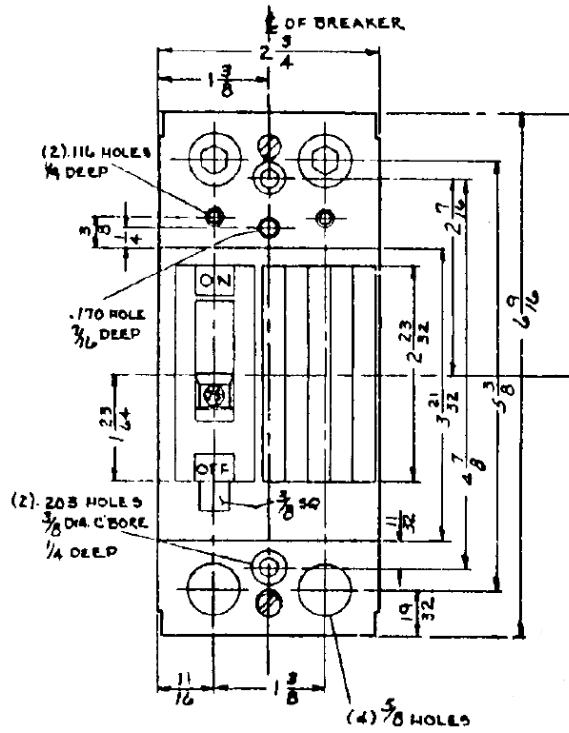
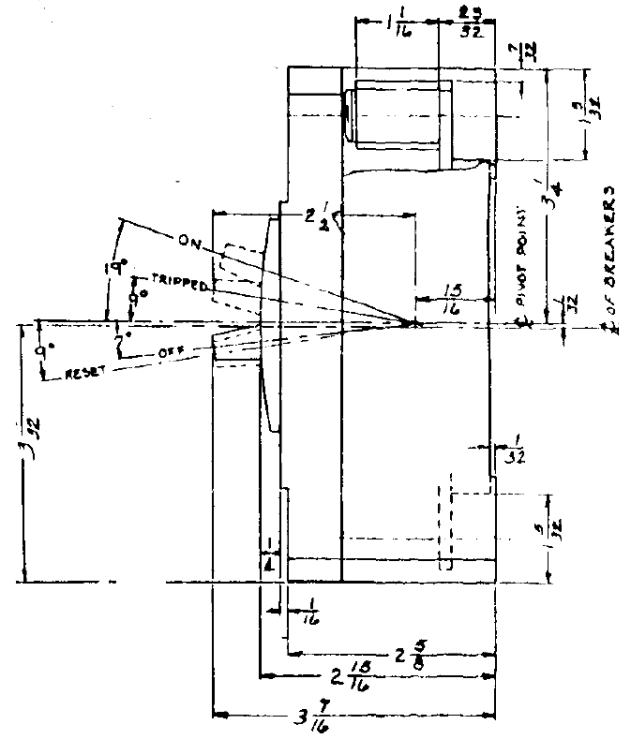


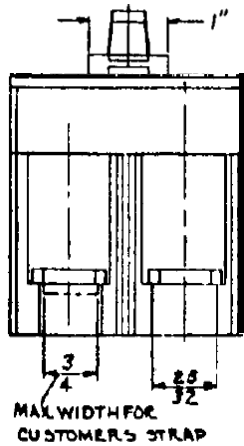
### Front View



### Side View



### Bottom View



| Breaker Amps | Load Side Wire Range Size |
|--------------|---------------------------|
| 100-200A     | (1) #1-300MCM (AL/CU)     |



100A 2PH THQD BREAKER 22K @ 120/240V  
FOR USE W/ GE METER STACKS – 200 & 225A SOCKETS

| PUBLICATION # | CAT NO    | DWG DATE   | REV # |
|---------------|-----------|------------|-------|
| DEE-882       | THQD22100 | 12/14/2015 | 01    |