



**WavePro™ Power Circuit Breakers
Key Lock Mounting Accessory Kit for
Substructure Cat. No's WPS50SUBDP1
and WPS50SUBDP2.**

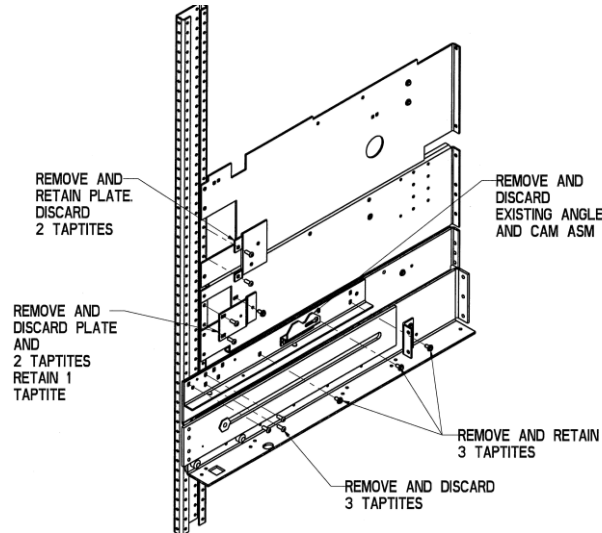


Fig. 1

WPSKLMTG3:

Item	Qty	Description
1	1	Slide Assembly
2	7	Tamper-resistant Screws (1/4-20 x .625)
3	5	Flat Washer
4	1	Pivot Bar Assembly
5	9	Lock Washer
6	2	Tamper-resistant Screws (1/4-20 x .500)
7	1	Shim

CAUTION: To avoid electrical hazard, make sure primary and secondary circuits are not energized while working in the compartment.

KIT CONTENTS (Cat. No. WPSKLMTG3)

This kit shown above contains the slide assembly, pivot bar assembly, and mounting hardware. This unit installs on the left side of the substructure. Key lock is furnished by the customer. See back of this sheet for lock required. Installation requires 5/32" tamper-resistant hex wrench.

INSTRUCTIONS

1. Remove parts as shown in Fig. 1.
2. Assemble the customer supplied key lock to the mounting plate using 2 tamper-resistant screws,

- lock washers, and flat washers as shown in Fig. 2. Torque screws to 7-9 Ft-Lbs.
3. Attach key lock and plate assembly to the left side of the substructure using 2 tamper-resistant screws and lock washers as shown in Fig. 2. Torque screws to 7-9 Ft-Lbs.
4. Mount slide assembly item #1 to left side of substructure reusing 3 taptites and installing tamper resistant screws and lock washers as shown in Fig. 2. (Leave hardware loose.)
5. If needed, adjust fixed cam as shown in Fig. 3. Screws may need to be loosened and roll pin removed in order to make adjustment. Torque hardware to 7-9 Ft-Lbs. Drill 0.1875 diameter hole through the fixed cam and side frame. Reuse and install roll pin.
6. Insert pivot bar rivet into slide assembly slot and mount to left side of substructure using shim, 2 tamper resistant screws, lock washers, flat washers, and reusing 1 taptite with flat washer as shown in Fig. 2. (Leave hardware loose.)
7. Move and hold slide assembly back.
8. Extend key lock bolt.
9. Release slide assembly and allow it to return.
10. Torque hardware to 7-9 Ft-Lbs.
11. Retract key lock bolt.
12. After assembly, assure slide assembly moves freely.

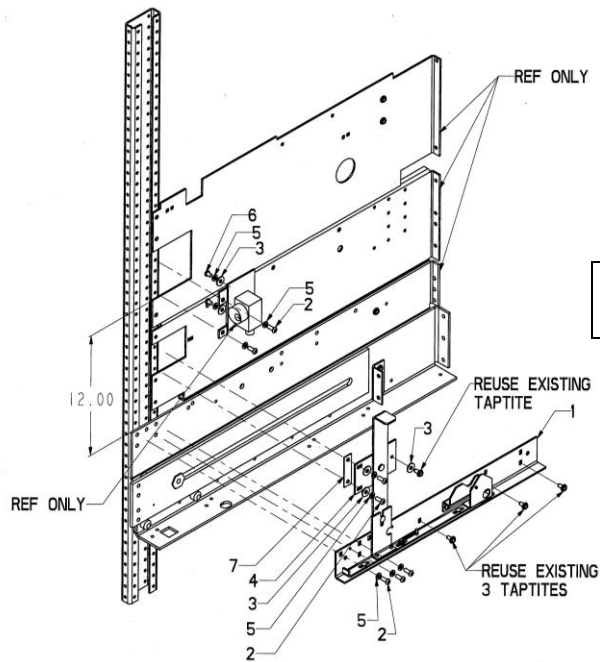


Fig. 2

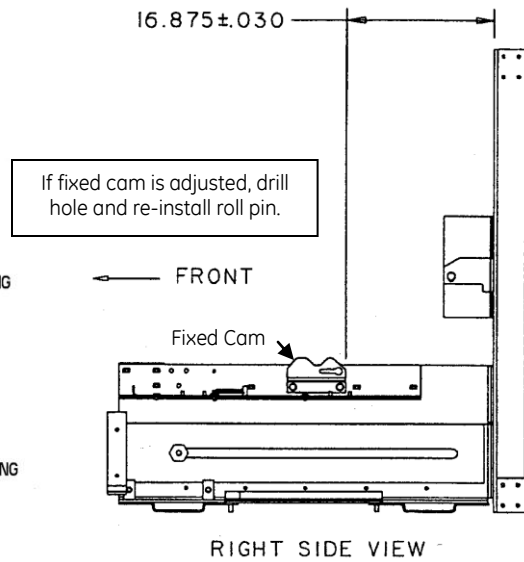


Fig. 3

Number of locks & keys	Key removable when:		Kirk key interlock
	Key Location	Bolt Location	
1		Extended	KR1007510
2	Lower Upper	Extended Withdrawn	KR1007521
2	Lower Upper	Extended Extended	KR1007520

These instructions do not purport to cover all details or variations in equipment nor to provide for every possible contingency to be met in connection with installation, operation or maintenance. Should further information be desired or should particular problems arise which are not covered sufficiently for the purchaser's purposes, the matter should be referred to the General Electric Company.

GE Industrial Solutions
41 Woodford Ave.
Plainville, CT 06062

www.geindustrial.com

© 2012 General Electric Company
All Rights Reserved

