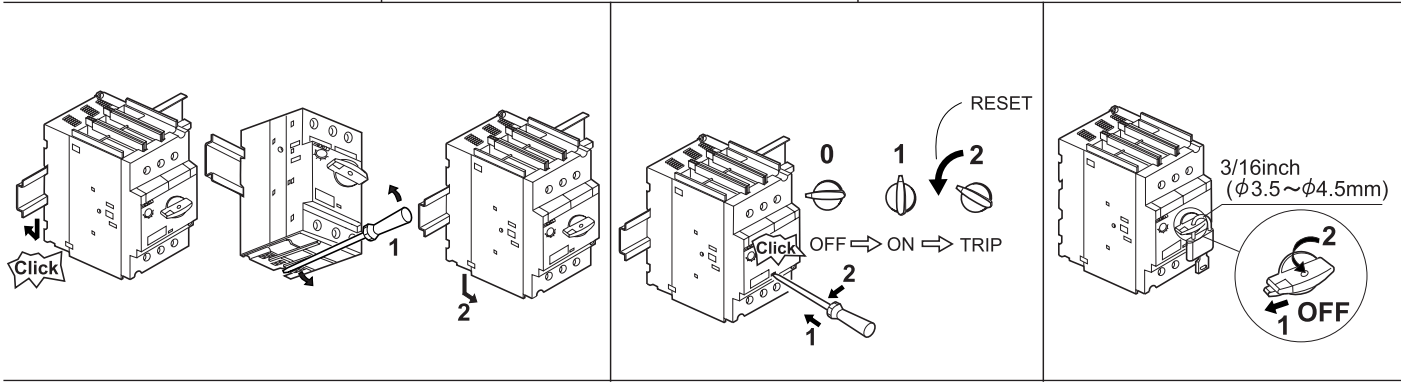
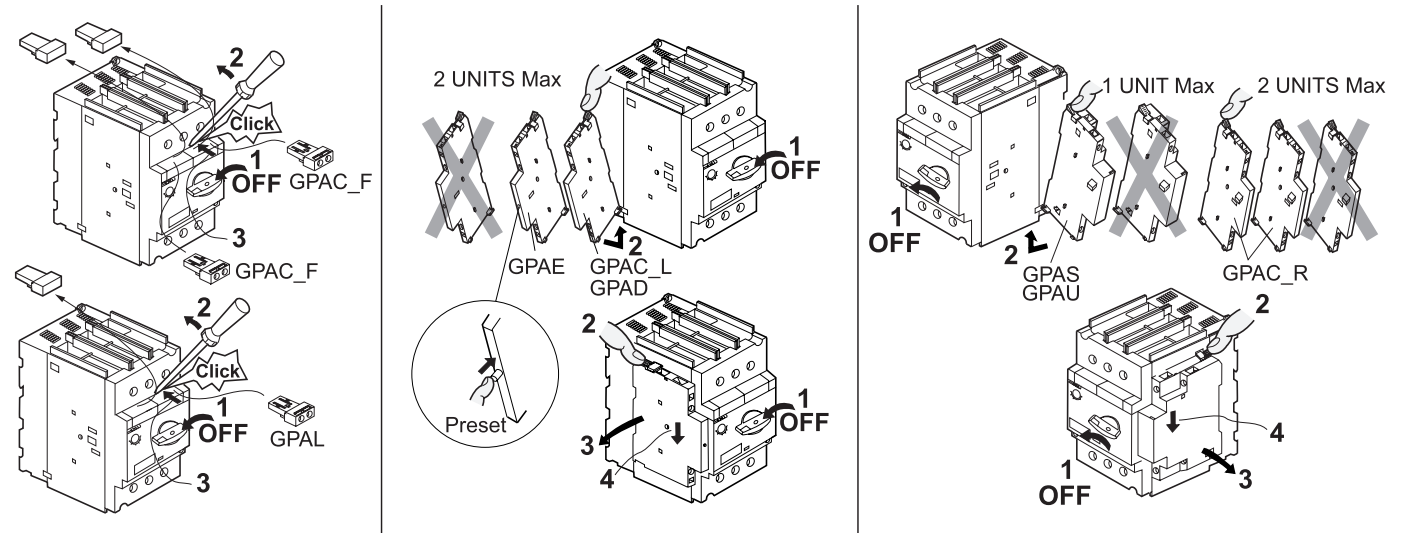




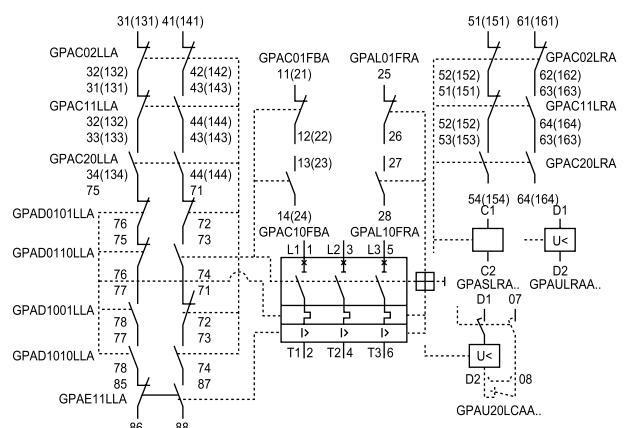
TYPE:GPS2BSA  
GPS2BHA

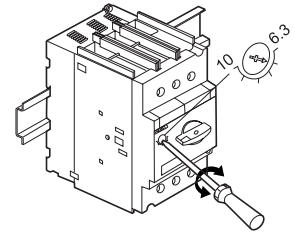
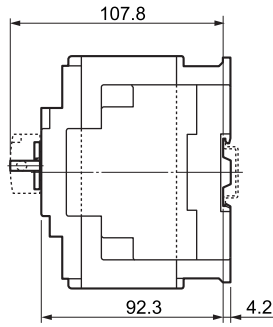
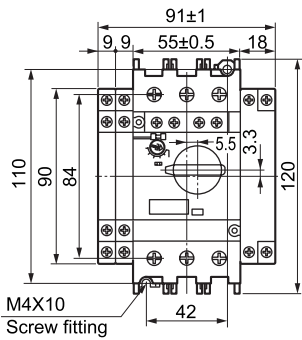
MANUAL MOTOR STARTER  
DISJONCTEURS MOTEURS  
MOTORSCHUTZSCHALTER  
INTERRUPTO PROTEZ MOTORE  
INTERRUPTOR AUTOMATICO  
DISJUNTOR PARA MOTOR  
MOTORBEVEILINGSCHAKELAAR

**WARNING:** Disconnect power from source before installing, modifying, or servicing.  
**ATTENZIONE:** Togliere alimentazione prima dell'installazione e di qualunque manutenzione.  
**ATTENTION:** Couper l'alimentation avant installation, modification ou entretien.  
**ATENCIÓN:** Quitar la tension antes del montaje y antes de hacer cualquier manipulación.  
**WARNUNG:** Netzspannung abschalten, bevor Installations-, Montage- oder Instandhaltungsarbeiten durchgeführt werden.  
**ATENCAO:** Desligar antes de instalar, modificar ou reparar.  
**OPGELET:** Netspanning onderbreken bij installatie, wijzigingen en onderhoud.

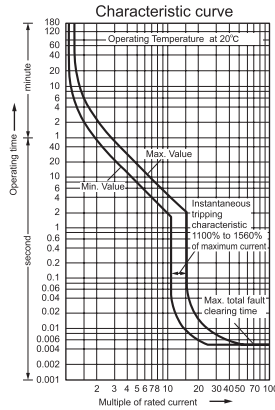


TYPE	GPS2_	GPA_
	A=13 1x1...25 mm <sup>2</sup> 2x1...16 mm <sup>2</sup>	A=10 1x0.5...2.5 mm <sup>2</sup> 2x0.5...2.5 mm <sup>2</sup>
	B=13 1x1...25mm <sup>2</sup> 2x1...16mm <sup>2</sup>	—
AWG	1x18 to 4 AWG 2x18 to 4 AWG	1x18 to 14 AWG 2x18 to 14 AWG
TORQUE	4 N·m 36 lb.in	0.8 N·m 7 lb.in



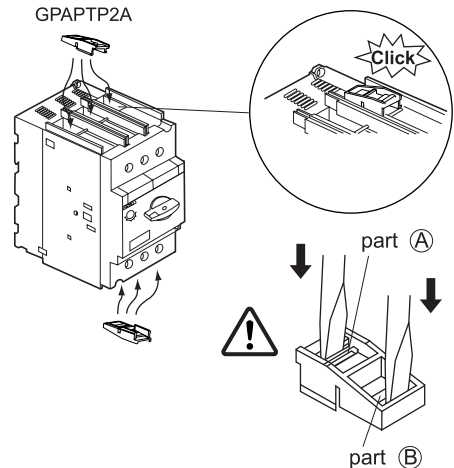
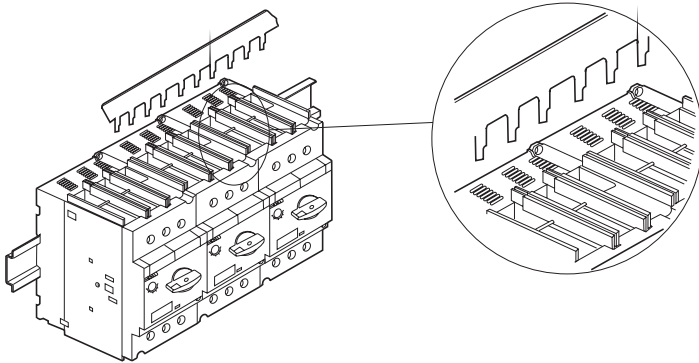


Catalog Number		Adjustment Range
Standard breaking capacity	High breaking capacity	
GPS2BSAK	GPS2BHAK	6.3 - 10
GPS2BSAL	GPS2BHAL	9 - 13
GPS2BSAM	GPS2BHAM	11 - 16
GPS2BSAN	GPS2BHAN	14 - 20
GPS2BSAP	GPS2BHAP	19 - 25
GPS2BSAR	GPS2BHAR	24 - 32
GPS2BSAS	GPS2BHAS	28 - 40
GPS2BSAT	GPS2BHAT	35 - 50
GPS2BSAU	GPS2BHAU	45 - 63



### Service Factors (US only)

- \* For a motor with a servicefactor of 1.15 or greater, use the motor nameplate full load current to select the appropriate current range.
- \* For motors with a service factor less than 1.15, multiply the motor FLA by .9 and select the appropriate current range.



- \* Per UL 508 sec. 76.10, short circuit indication is required for category E installation. Use catalog # GPAE11LLA.
- \* Suitable for motor group installation on a circuit capable of delivering not more than shown below, when protected by 1500A maximum Fuses or Circuit Breaker.

Catalog Number		FLA Adjustment Range	RMS Symmetrical Amperes		
			240V	480V	600V
GPS2BSAK	GPS2BHAK	6.3 - 10	100,000	65,000	25,000
GPS2BSAL	GPS2BHAL	9 - 13	100,000	65,000	25,000
GPS2BSAM	GPS2BHAM	11 - 16	100,000	65,000	25,000
GPS2BSAN	GPS2BHAN	14 - 20	100,000	65,000	25,000
GPS2BSAP	GPS2BHAP	19 - 25	100,000	65,000	25,000
GPS2BSAR	GPS2BHAR	24 - 32	100,000	65,000	25,000
GPS2BSAS	GPS2BHAS	28 - 40	100,000	65,000	10,000
GPS2BSAT	GPS2BHAT	35 - 50	100,000	65,000	10,000
GPS2BSAU	GPS2BHAU	45 - 63	100,000	35,000	10,000

	Wire size	Terminal cover
(A)	1 - 6 mm <sup>2</sup> 18 - 8 AWG	No cutting
(B)	10 - 25 mm <sup>2</sup> 6 - 4 AWG	Cut before mounting (part (A) and (B))

	20	(≅ 2.5 mm <sup>2</sup> )
	13	(≅ 1.5 mm <sup>2</sup> )
	20	(≅ 1.5 mm <sup>2</sup> )
	13	(≅ 1.0 mm <sup>2</sup> )
AWG	20	(≅ 14 AWG)
	13	(≅ 16 AWG)

\* Per UL 508 sec. 76.10, short circuit indication is required for category E installation of GPS2BHA. Use catalog # GPAE11LLA.

These instructions do not purpose to cover all details or variations in equipment nor to provide for every possible contingency to be met in connection with installation operation or maintenance. Should further information be desired or should particular problems arise which are not covered sufficiently for the purchaser's purposes, the matter should be referred to the GE Company.