



DEH-41408 Installation Instructions

EntelliGuard® G Circuit Breaker Accessories

Introduction

Door Interlock Kit:

A door interlock mechanism may be fitted inside the cassette on the right for Left hinged door or Left for Right hinged door. Specify whether door is Left Hand or Right hand hinged when ordering. Door interlock is different for a cassette with side mounted secondary disconnect.



Figure 1


Interlock Packs


Each pack contains an interlock lever, a helical spring, circlips (Fig. 1). A door bracket & its mounting screws, washers are also included

Catalog No.

| Catalog No | Description |
|------------|--------------------------------------------------|
| GLHD | Left Hand door interlock |
| GRHD | Right Hand door interlock |
| GRHDSR | Door interlock for cassette with side mounted SD |

Door Interlock Kit

 **WARNING:** Before installing any accessories, turn the breaker OFF, disconnect it from all voltage sources, and discharge the closing springs.

 **AVERTISSEMENT:** Avant d'installer tout accessoire, mettre le disjoncteur en position OFF, le déconnecter de toute tension d'alimentation, et décharger les ressorts d'armement

Use the following procedure to install the Door Interlock Kit accessory into the circuit breaker.

1. Place the spring over spring pin protruding from cassette side plate as shown in fig 2.



Figure 2



Figure 3a

2. Position interlock lever as shown in Fig 3.

3. Position one leg of the spring below the second pin and position the other leg of the spring over the interlock bracket.

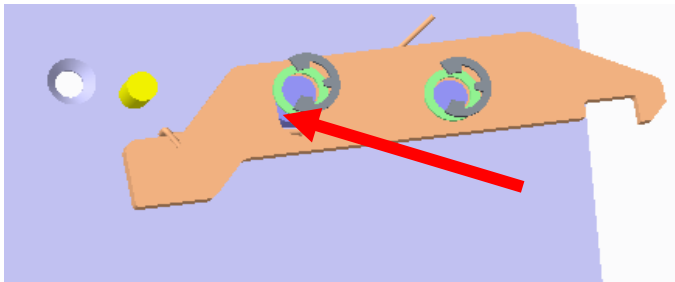
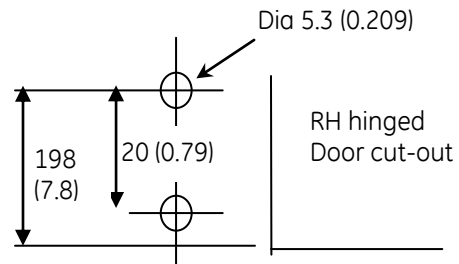


Figure 3b

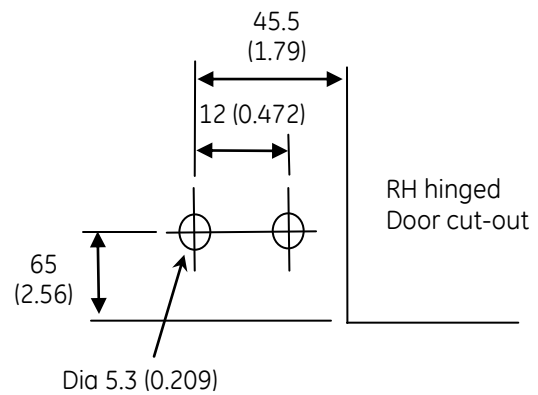
4. Holding lever in position; insert circlips one each into the groove in the spring pin & Second Pin (Fig. 3a). If there is lateral movement in Lock, put a shim washer between circlip and lock (Fig. 3b).. Now the interlock swings in the slot with respect to the pivot pin 1

5. Based on the door interlock type, drill the hole pattern on the door as shown in fig 3, 4 & 5. Dimensions shown are in mm (inches)



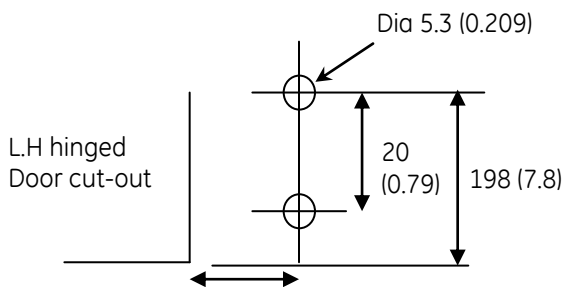
- F1, 3P & 4P - 33.5 (1.32)
- F2, 3P & 4P - 98.5 (3.88)
- F2.5, 3P - 181.3 (7.14)
- F3, 3P - 240.5 (9.47)
- F3, 4P - 355.5 (14.0)

Fig. 4(GRHD)



F1, 3P & 4P Side mounted SD

Fig. 5(GRHDSR)



- F1, 3P - 32.5 (1.28)
 - F1, 4P - 132.5 (5.22)
 - F2, 3P - 67.5 (2.66)
 - F2, 4P - 197.5 (7.78)
 - F2.5, 3P - 180.3 (7.10)
 - F3, 3P - 222.5 (8.76)
 - F3, 4P - 340.5 (13.4)
- Fig. 3 (GLHD)

6. Assemble the door bracket to the door using the screws and washers as shown in fig 6.

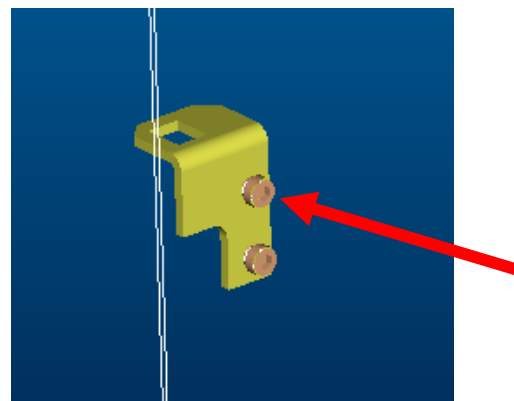


Figure 6

7. When the door is closed, the bracket on the door will be hooked to the door interlock on the cassette as shown in fig 7.

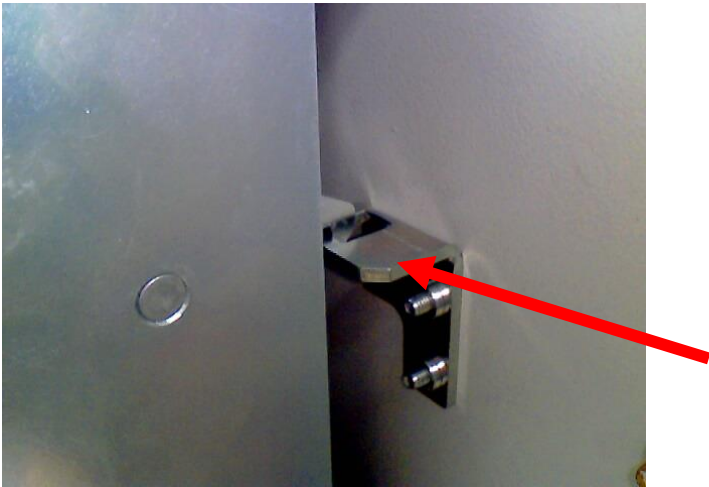


Figure 7

These instructions do not purport to cover all details or variations in equipment nor, to provide contingency to be met in connection with installation, operation, or maintenance. Should further information be desired, or should particular problems arise which are not covered sufficiently for the purchaser's purposes, the matter should be referred to GE.

GE
41 Woodford Ave, Plainville, CT 06062
www.geelectrical.com

© 2009 General Electric Company



DEH-41408 R4 (12/15)