



Typical SCP Plus™ Panelboards

WIRING SPACE — from end of lug to side wall

MAIN LUGS ONLY ①			MAIN or BRANCH BREAKERS ①				
To Top or Bottom Wall (inches)			To Box Side Wall (inches)				
Amps	Phase Lugs	Neutral Lugs	Maximum Trip	Mntg.	Frame	31" W Box	40" W Box
			150 ②	D/B	TEB, TED, THED, SE	7 5/16	11 13/16
					THLC1	5 5/16	9 3/16
225	6 3/16	6 5/32	225	D/B	TQD, THQD	7 9/16	12 1/16
				S/B	SF	5 1/4	9 3/4
				S/B	THLC2	8 11/16	13 3/16
400	8	8 1/32	400	S/B	SG4	9 3/16	13 1/16
				D/B	SG4	—	8 3/16
				S/B	THLC4	8 11/16	13 3/16
600	10 1/4	10 1/32	600	S/B	TB4	—	11 15/16
				S/B	SG6	9 3/16	13 1/16
				D/B	SG6	—	8 3/16
				S/B	TB6	—	10 1/16
800 ③	10 1/4	12 1/16	800	S/B	SK8	—	12 1/4
800 ③	13	12 1/16		S/B	—	—	12 1/4
1200 ④	13	12 1/16		—	—	—	10 1/16
1200 ⑤	14 3/8	14 13/16		1200	S/B	SK12	—

- ① Type wire used Cu-Al.
- ② Available as branch device only.
- ③ 1-lug, maximum 2 cables.
- ④ 1-lug, maximum 3 cables.
- ⑤ 1-lug, maximum 4 cables.

CIRCUIT BREAKER TERMINAL LUGS

Circuit Breaker Frame				Terminal Lugs (Cu-Al unless otherwise noted)		
Standard	High IC	Tri-Break®	Current Limiting	# Per Pole	Per Lug	Catalog # and Range
TEB TED TED4 TED6	THED ① — THED SEHA					TCAL14, 15-30A - # 14-8 TCAL12, 30-60A - # 14-3 Cu, # 12-1 Al TCAL12A, 70-90A - # 6-2/0 Cu, # 4-2/0 Al TCAL15, 100-150A - # 3-3/0
SEDA			SELA SEPA	1	1	TCAL18, # 12-3/0 Cu, # 12-3/0 Al
TQD	THQD			1	1	TCAL25, # 1-300kcmil
SFHA			SFLA, SFPA	1	1	TCAL29, # 8-350kcmil
SGDA, SGHA			SGLA, SGPA	1		TCKL265, 2(2/0-400kcmil Cu) or 2(2/0-500kcmil Al) or # 6-600kcmil ②
SGDA, SGHA			SGLA, SGPA	1		TCKL365, 2(2/0-400kcmil Cu) or 2(2/0-500kcmil Al) or # 6-600kcmil ②
		TB4		1	1	TCAL43, # 6-600kcmil or 2(2/0-250kcmil)
		TB6		1	2	TCAL61, 2/0-500kcmil
SKHA8	SKLA8, SKPA8			1	1 2 3 3	TCAL41, # 4-600kcmil or 2(2/0-150kcmil) TCAL 61, 2/0-500kcmil TCAL81, 3/0-500kcmil TCAL91, same as TCAL81 except load end
		TB8		1	3	TCAL81, 3/0-500kcmil
SKHA12	SKLA12, SKPA12			1	3 4 4	TCAL81, 3/0-500kcmil TCAL121, 250-350kcmil Cu or 350-500kcmil Al TCAL131, same as TCAL121 except load end
			THLC1	1	1	TCAL12, 15-60A, # 14-3 Cu or # 12-1 Al TCAL12A, 70-80A, # 6-2/0 Cu or # 4-2/0 Al TCAL15, 100-150A, # 3-3/0 Cu or # 1-3/0 Al
			THLC2	1	1	TCAL27, 125-225A, # 4-300kcmil
			THLC4	1	1	TCLK43, 3/0-500kcmil or 2(3/0-250kcmil) ③

- ① 1 pole THED available only in 15-30A trip.
- ② Lug kit — includes line or load end cover.
- ③ 3 pole lug assembly suitable for line or load end.

MOLDED CASE CIRCUIT BREAKER INTERRUPTING RATINGS

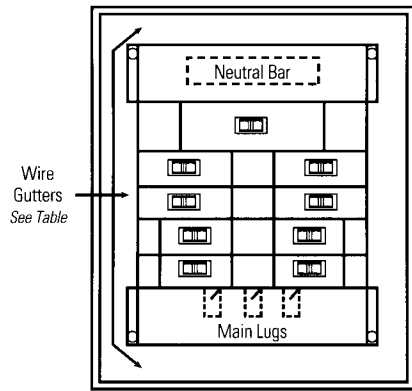
Molded Case Circuit Breakers				Federal Specs C/B Class W-C - 375B	UL Listed Amps Interrupting (in Thousands)						
Frame	Trip Range Amps	# of Poles	Rated VAC		RMS Symmetrical in AC Volts						
					120	120/240	240	277	347	480	600
TEB	15-100	1	120	12a	10	-	-	-	-	-	-
TEB	15-100	2	240	12b	-	-	10	-	-	-	-
TEB	15-100	3	240	12b	-	-	10	-	-	-	-
TED ^①	15-100	1	347	13a	-	-	-	14	10	-	-
TED4	15-100	2	480	13b	-	-	18	-	-	14	-
TED4	15-150	3	480	13b	-	-	18	-	-	14	-
TED6	15-100	3	600	18b	-	-	18	-	-	14	14
TED6	110-150	3	600	n/a	-	-	18	-	-	14	14
SEDA ^②	15-100	3	600	18a	-	-	18	-	-	14	14
SEDA ^②	15-150	3	600	18a	-	-	18	-	-	14	14
TQD	125-225	2	120/240	12b	-	10	-	-	-	-	-
TQD	125-225	2,3	240	12b	-	-	10	-	-	-	-
SFHA ^②	70-250	2	480	13b	-	-	65	-	-	25	-
SFHA ^②	70-250	3	600	20a, 22a	-	-	65	-	-	25	18
SGDA	125-400	2	240	14b	-	65	-	-	-	-	-
SGDA	125-400	3	240	14b	-	-	65	-	-	-	-
SGHA4	125-400	2,3	600	21a, 23a	-	-	65	-	-	35	25
SGHA6	250-600	2,3	600	23a	-	-	65	-	-	35	25
SKHA8	300-800	2,3	600	21a, 23a	-	-	65	-	-	50	25
SKHA12	600-1200	2,3	600	21a, 23a	-	-	65	-	-	50	25
THED ^①	15-30	1	347	13a	-	-	-	65	18	-	-
THED4	15-100	2	480	22a	-	-	65	-	-	25	-
THED4	15-100	3	480	-	-	-	65	-	-	25	-
THED4	110-150	3	480	-	-	-	42	-	-	25	-
THED6	15-100	3	600	22a	-	-	65	-	-	25	18
THED6	110-150	3	600	-	-	-	42	-	-	25	18
SEHA ^②	15-100	3	600	22a	-	-	65	-	-	25	18
SEHA ^②	110-150	3	600	-	-	-	65	-	-	25	18
THQD	125-225	2	120/240	-	-	22	-	-	-	-	-
THQD	125-225	3	240	-	-	-	22	-	-	-	-
SKLA	300-1200	2,3	600	24a	-	-	100	-	-	65	42
SKPA	300-1200	2,3	600	25a	-	-	100	-	-	100	65
SELA ^②	15-150	2	480	13b	-	-	100	-	-	65	-
SELA ^②	15-150	3	600	21a, 22a, 23a	-	-	100	-	-	65	25
SEPA ^②	15-150	2	480	16a	-	-	100	-	-	100	-
SEPA ^②	15-150	3	600	16a	-	-	100	-	-	100	25
THLC1 ^③	15-150	3	600	16b	-	-	100	-	-	100	50
SFLA ^②	70-250	2	480	13b, 15b	-	-	100	-	-	65	-
SFLA ^②	70-250	3	600	21a, 23a	-	-	100	-	-	65	25
SFPA ^②	70-250	2	480	16a	-	-	100	-	-	100	-
SFPA ^②	70-250	3	600	16a, 23a	-	-	100	-	-	100	25
THLC2	70-250	3	600	16b	-	-	100	-	-	100	50
SGLA4	125-400	2,3	600	23a	-	-	100	-	-	65	65
SGPA4	125-400	2,3	600	23a	-	-	100	-	-	100	65
THLC4	250-400	3	600	16b	-	-	100	-	-	100	50
SGLA6	250-600	2,3	600	24a	-	-	100	-	-	65	65
SGPA6	250-600	2,3	600	25a	-	-	100	-	-	100	65
TB4	125-400	3	600	26a	-	-	100	-	-	100	100
TB6	300-600	3	600	26a	-	-	100	-	-	100	100
TB8	600-800	3	600	26a	-	-	100	-	-	100	100

① TED/THED, 1P-347VAC maximum, device is suitable for 10KAIC @ 480VAC, but not UL labeled or listed.

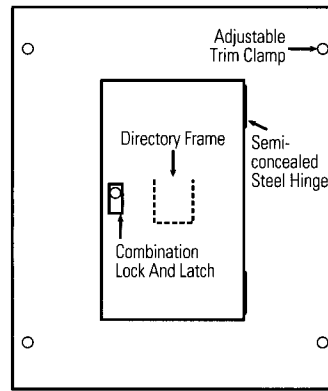
② 2 pole devices rated 480VAC maximum.

③ THLC1, 15-50A, is rated 480VAC maximum.

DRAWINGS

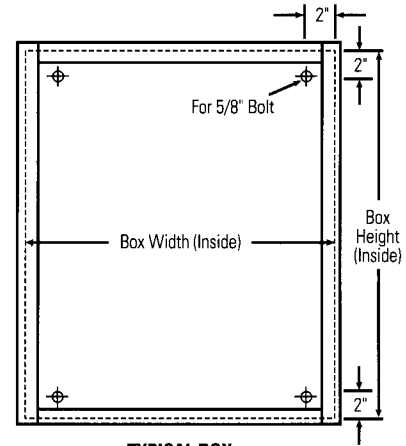


TYPICAL PANELBOARD
Front View With Trim Removed

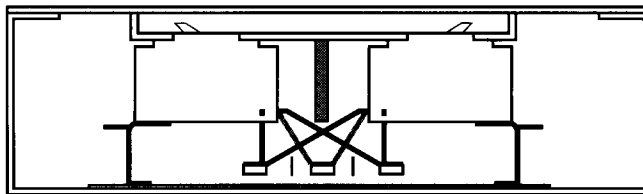


TYPICAL FRONT

- Surface Mount — Add .25" To Inside Box Dimensions
- Flush Mount — Add 1.5" To Inside Box Dimensions



TYPICAL BOX

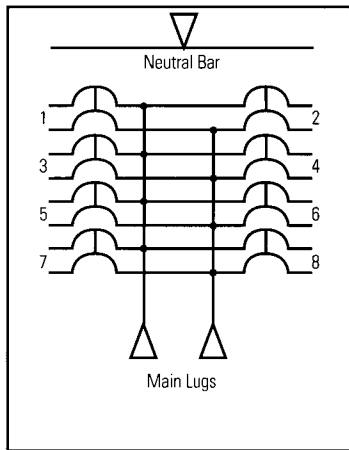


PANELBOARD CROSS SECTION



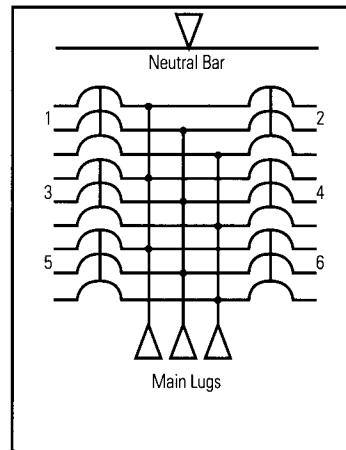
BOX END VIEW

- Box Furnished Without Knockouts



TYPICAL WIRING DIAGRAM

- 1Ph, 3W, 120/240Vac
- 1Ph, 2W, 120, 240, 480 or 600Vac
- 3Ph, 3W, 120, 240, 480 or 600Vac



TYPICAL WIRING DIAGRAM

- 3Ph, 4W, 208Y/120Vac or 480Y/277Vac, S.N.
- 3Ph, 3W, 120, 240, 480 or 600Vac (Omit Neutral)

SPECIFICATIONS

GENERAL

- Panelboards are built in accordance with UL standards and are so labeled providing that they contain only UL listed devices.
- Gauge of metal used in is accordance with UL and NEC standards.
- Panelboards are of deadfront construction.
- U.S. FEDERAL SPECIFICATIONS: Panelboard type 1, class 1, per WVP-115a amendment 3 (3/31/76), circuit breakers WC-375b (7/22/75).

BOXES

- Boxes are of galvanized sheet steel.

FRONTS

- Fronts are finished ANSI-61 light gray enamel over a rust inhibitor.
- Fronts are equipped with a flush type, combination catch and lock.
- Doors over 48" high are furnished with two locks. All locks are keyed alike.

PANELS

- Panelboard interiors are factory assembled on a rigid frame.
- Main lugs are solderless type, suitable for copper or aluminum cables, front removable.
- Main disconnect device (if any) is identified and branch circuits are provided with circuit numbers. Circuit numbering to be as shown in line drawings above unless otherwise indicated.
- Panels are adjustable from the back of the box by means of adjusting screws.
- Main bus will be aluminum unless otherwise stated on drawings.



GE Electrical Distribution & Control

DEM-069 0195 BL

General Electric Company
41 Woodford Avenue, Plainville, CT 06062
© 1995 General Electric Company