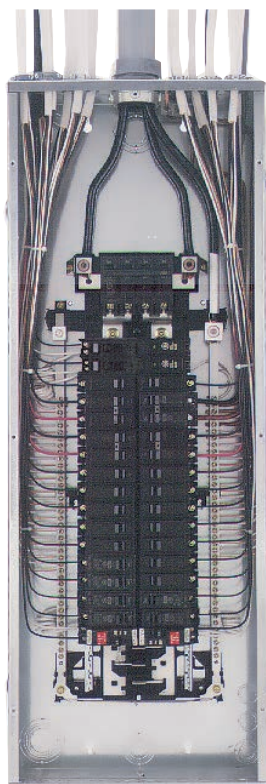




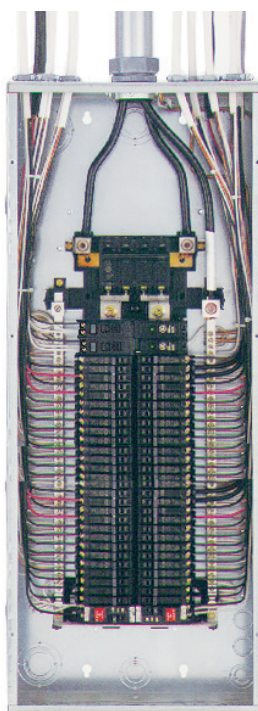
Save Money

By the home, we save contractors money when maximizing the load center circuits by using our THQP 1/2" circuit breakers.

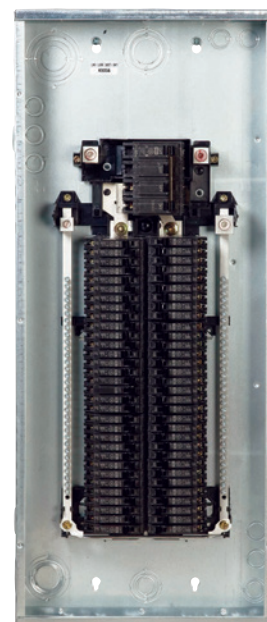
- No need to think about configurations for tandems and quads.
- Pricy tandems and quads are not needed!
- THQP breakers are a smaller, smarter solution for today's cost- and quality-conscious contractors and homeowners.
- Half the width of standard breakers, they allow use of smaller load centers for maximum savings of space and money.



Meet service requirements with a GE 40-circuit load center using 1" breakers.



Advantage of using THQP breakers – use of a smaller, less expensive GE 20-circuit load center.



Unlock the value of our High Capacity Load Centers by using THQPs!

We are the only manufacturer that gives you this cost advantage without sacrificing flexibility!

Technical data

Q-Line 1/2" Plug-In Circuit Breakers, Interruption Rating 10kAIC

Ampere Rating	Type THQP 1/2-inch Module, 120/240	
	Catalog Number	
	Single Pole ¹	Double Pole ² (Incorporates Internal Common Trip Bar)
15 ²	THQP115	THQP215
20 ²	THQP120	THQP220
25	THQP125	THQP225
30	THQP130	THQP230
35	THQP135	THQP235
40	THQP140	THQP240
45	THQP145	THQP245
50	THQP150	THQP250

¹ UL Listed as HACR (heating, air conditioning and refrigeration).

² UL Listed as SWD (switching duty). Suitable for 120 volts ac fluorescent lighting loads.

³ 15-100 amp UL Listed as HACR (heating air conditioning and refrigeration).



Features and benefits

Advantages

- THQP Breakers are more efficient than Tandems and Quads
- Compared to Tandems, THQP Breakers:
 - Are easier to order/stock
 - Lower your installation costs (they don't force you to plan circuits in pairs)
 - Offer a wider range of amp ratings (from 15A to 50A)
- Compared to Quads, THQP Breakers:
 - Offer greater flexibility when wiring a panel
 - Lower your installation costs (they don't force you to plan circuits as multiples)
 - Offer greater reliability and protection because they all have an internal common trips

Rugged durability

- Tested to the same specifications as our 1" breakers
- Similar internal design as THQL

Small footprint

- Big value
- Saves contractor space and money by using a smaller, less expensive load center

Future planning

- Minimize load center upgrades by freeing up space when new circuits are required