



# PowerMark Gold<sup>\*</sup> Load Centers

## 150-200 Amp 32/42 Circuit

- 42-space breaker capacity
  - Right neutral bar has 40 holes
  - Reduced need for additional field installed ground bars
  - (20) 1/2" (THQP) positions with (22) 1" (THQL) positions remaining
  - A common interior on the 150–200 amp devices
- 
- Single Phase, Three Wire, 120/240 VAC, 22 kAIC rated
  - UL Listed (Panelboards No. 67)
    - Service barriers included for factory installed main circuit breaker
  - 60°C/75°C conductor rating
  - Suitable for use as Service Entrance Equipment when installed in accordance with the National Electric Code



# PowerMark Gold Load Centers 150-200 Amp 32/42 Circuit

## Technical Data

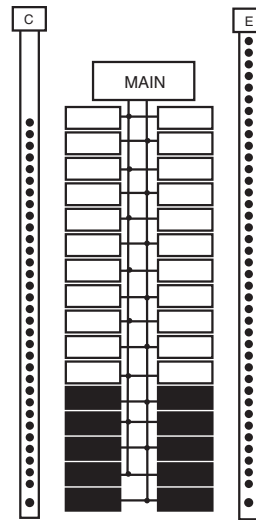
Main Ampere Rating	Maximum Spaces				Total 1-pole Spaces	Indoor Type 1 Enclosure		Main Style	Front Style	Main Wire Size AWG/kcmil Cu-Al	Equipment Ground Kit Cat No.
	1" THQL		1/2" THQP			Cat. Number	Box No.				
	1P	2P	1P	2P							
150	32	16	20	10	42	TM3215C42	11	Main Breaker Factory Installed	Combination Flush/Surface Front	1-3/0 (Cu), 2/0-3/0 (Al)	TGK32 and TLK20 (order separately)
200	32	16	20	10	42	TM3220C42	11	Main Breaker Factory Installed	Combination Flush/Surface Front	1-250 (Cu), 2/0-250 (Al)	TGK32 and TLK20 (order separately)
	32	16	20	10	42	TLM3220C42	11	Main Lugs Factory Installed	Combination Flush/Surface Front	1-250 (Cu), 2/0-250 (Al)	TGK32 and TLK20 (order separately)

## Dimensions (in.)

Box No.	Width	Height	Depth
11	14	33 3/16	3 3/4

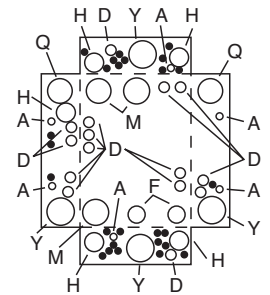
Breaker Symbol	Breaker Fill	
	1" THQL	1/2" THQP
	1	-
	1	2

See GEH-40537 for instructions on how to remove the crossbar to isolate the ground and neutral bars.



## Knockouts

	Symbol							
	A	•	D	F	H	M	Q	Y
Conduit Size in Inches	5/16	-	-	-	-	-	-	-
	-	3/8	-	3/8	-	-	-	-
	-	1/2	1/2	1/2	1/2	-	-	-
	-	3/4	3/4	3/4	3/4	-	-	3/4
	-	-	1	1	1	1	1	1
	-	-	-	-	1 1/4	1 1/4	-	1 1/4
	-	-	-	-	-	1 1/2	1 1/2	1 1/2
	-	-	-	-	-	2	2	2
-	-	-	-	-	-	2 1/2	2 1/2	



GE Energy Connections  
41 Woodford Avenue  
Plainville, CT 06062  
1-800-431-7867  
www.geindustrial.com

\*Indicates a trademark of the General Electric Company and/or its affiliates.  
Information provided is subject to change without notice. Please verify all details with GE. All values are design or typical values when measured under laboratory conditions, and GE makes no warranty or guarantee, express or implied, that such performance will be obtained under end-use conditions.  
©2016, General Electric Company and/or its affiliates. All rights reserved.  
12.16 DET-392B