



PowerMark Plus™

Three Phase Load Centers

The PowerMark Plus™ Three Phase load center is designed for use in commercial or high-rise residential units. The galvanized box and tin plated copper stabs ensure the reliability and durability of the load center. The product is available with the main circuit breaker factory installed or the main lugs factory installed.

- 125 A through 225 A main ampere ratings
- Aluminum bus with copper mounting stabs providing copper-to-copper stab connections
- UL Listed (Panelboard No. 67)
 - Service barriers included for factory installed main circuit breaker
- 22 kAIC Symmetrical Short Circuit Rating Standard
- 60°C/75°C Conductor Rating
- Suitable for use as Service Entrance Equipment when installed in accordance the National Electrical Code



PowerMark Plus Three Phase Load Centers

Three Phase, Four Wire, 208Y/120Vac¹

Main Breaker Factory Installed

Indoor (NEMA 1) Enclosure

- Combination Flush/Surface Front
- B suffix indicates bottom Feed



TM42422C

Technical Data

Main Ampere Rating	1 Pole, 1" Spaces	2 Pole, 1" Spaces	3 Pole, 1" Spaces	Total 1 Pole Spaces	Product No.	Main Wire Size (AWG/kcmil) Cu-Al	Equipment Ground Kit (Order Separately)	Box No.	Drawing No.	Feed Type
100	12	6	4	12	TM12410C ²	6-1/0 (Cu), 4-1/0 (Al)	TGK12, TGK24	6	10103091SH17	Top
	18	8	6	18	TM18410C ²		TGK24, TGK32		10103091SH17	Bottom
125	30	14	10	30	TM30412C	1-3/0 (Cu), 2/0-3/0 (Al)	TGK32	11	10103091SH21	Top
	30	14	10	30	TM30412CB				10103091SH21	Bottom
150	24	12	8	24	TM24415C	1-3/0 (Cu), 2/0-3/0 (Al)	TGL1, TGL2, TGL20, TNG3, TGN6	11	10103091SH21	Top
	24	12	8	24	TM24415CB				10103091SH21	Bottom
	30	14	10	30	TM30415C		TGK32	10103091SH21	Top	
	30	14	10	30	TM30415CB			10103091SH21	Bottom	
	42	20	14	42	TM42415C		TGK42	10103091SH23	Top	
	42	20	14	42	TM42415CB			10103091SH23	Bottom	
200	24	12	8	24	TM24420C	1-3/0 (Cu), 2/0-3/0 (Al)	TGK32	11	10103091SH21	Top
	24	12	8	24	TM24420CB				10103091SH21	Bottom
	30	14	10	30	TM30420C	1-250 (Cu), 2/0-250 (Al)	TGK32	12	10103091SH22	Top
	30	14	10	30	TM30420CB				10103091SH22	Bottom
	42	20	14	42	TM42420C	TGK42	14	10103091SH24	Top	
	42	20	14	42	TM42420CB			10103091SH24	Bottom	
225	42	20	14	42	TM42422C	1-300 (Cu), 2/0-300 (Al)	(2) TGL2	15	10103091SH25	Top
	42	20	14	42	TM42422CB				10103091SH25	Bottom

Three Phase, Four Wire, 208Y/120Vac¹

Main Breaker Factory Installed

Outdoor (NEMA 3R) Enclosure



TM42422R

Technical Data

Main Ampere Rating	1 Pole, 1" Spaces	2 Pole, 1" Spaces	3 Pole, 1" Spaces	Total 1 Pole Spaces	Product No.	Main Wire Size (AWG/kcmil) Cu-Al	Equipment Ground Kit (Order Separately)	Box No.	Drawing No.	Feed Type
100	18	8	6	18	TM18410R	6-1/0 (Cu), 4-1/0 (Al)	TGK24, TGK32	R4	10103091SH2	Top
125	30	14	10	30	TM30412R	1-3/0 (Cu), 2/0-3/0 (Al)	TGK32	R7	10103091SH3	Top
150	24	12	8	24	TM24415R	1-3/0 (Cu), 2/0-3/0 (Al)	TGK32	R6	10103091SH5	Top
	24	14	10	30	TM30415R			R7	10103091SH3	
200	30	14	10	30	TM30420R	1-250 (Cu), 2/0-250 (Al)	TGK32	R7	10103091SH3	Top
	42	20	14	42	TM42420R		TGK42	R8	10103091SH6	
225	42	20	14	42	TM42422R	1-300 (Cu), 2/0-300 (Al)	TGK42	R8	10103091SH6	Top

¹ Also UL Listed for three phase, four-wire 240/120 Volts Hi Leg delta and three phase, three-wire 240 Volts (240V breakers must be installed).

² 100 Amp indoor devices UL listed for bottom feed by installing complete unit upside down.

Three Phase, Four Wire, 208Y/120Vac¹

Main Lugs Factory Installed

Indoor (NEMA 1) Enclosure

- Combination Flush/Surface Front



TL18415C



TL42422C

Technical Data

Main Ampere Rating	1 Pole, 1" Spaces	2 Pole, 1" Spaces	3 Pole, 1" Spaces	Total 1 Pole Spaces	Product No.	Main Wire Size (AWG/kcmil) Cu-Al	Equipment Ground Kit (Order Separately)	Box No.	Drawing No.	Feed Type		
125	12	6	4	12	TL12412C ²	6-2/0	TGK12, TGK24	4	10103091SH16	Top Bottom		
150	18	8	6	18	TL18415C ²	1-3/0 (Cu), 2/0-3/0 (Al)	TGK24, TGK32	7	10103091SH2	Top Bottom		
	24	12	8	24	TL24415C ²				10103091SH18			
200	18	8	6	18	TL18420C ²	1-250 (Cu), 2/0-250 (Al)	TGK32	8	10103091SH2	Top Bottom		
	30	14	10	30	TL30420C ²				TGK42		11	10103091SH21
	42	20	14	42	TL42420C							13
225	30	14	10	10	TL30422C ³	1-300 (Cu), 2/0-300 (Al)	(2) TGL2	15	10103091SH25	Top Bottom		
	42	20	14	42	TL42422C ³				10103091SH25			

Three Phase, Four Wire, 208Y/120Vac¹

Main Lugs Factory Installed

Outdoor (NEMA 3R) Enclosure



TL18420R



TL42422R

Technical Data

Main Ampere Rating	1 Pole, 1" Spaces	2 Pole, 1" Spaces	3 Pole, 1" Spaces	Total 1 Pole Spaces	Product No.	Main Wire Size (AWG/kcmil) Cu-Al	Equipment Ground Kit (Order Separately)	Box No.	Drawing No.	Feed Type		
125	12	6	4	12	TL12412R ²	6-2/0	TGK12, TGK24	R3	10103091SH1	Top		
150	18	8	6	18	TL18415R ²	1-3/0 (Cu), 2/0-3/0 (Al)	TGK24, TGK32	R4	10103091SH2	Top		
	24	12	8	24	TL24415R ²				10103091SH2			
200	18	8	6	18	TL18420R ²	1-250 (Cu), 2/0-250 (Al)	TGK32	R4	10103091SH2	Top		
	30	14	10	30	TL30420R ²				TGK42		R6	10103091SH5
	42	20	14	42	TL42420R ³							R8
225	42	20	14	42	TL42422R ³	1-300 (Cu), 2/0-300 (Al)	TGK42	R8	10103091SH6	Top		

¹ Also UL Listed for three phase, four-wire 240/120 Volts ac delta and three phase, three-wire 240 Volts ac branch breakers installed.

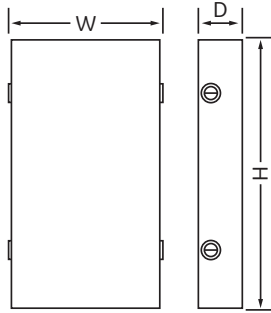
² Alternate main breaker 100 Amp max. THQL (10kAIC), THHQL (22kAIC) three-pole, use retainer THQLRK.

³ Not suitable for use as service entrance equipment.

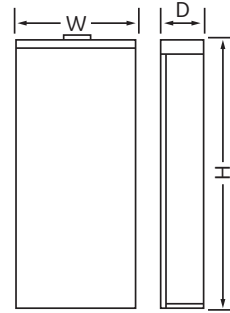
Dimensions and Knockouts

Dimensions (inches)

Box	Width	Height	Depth
4	14	19	3 3/4
6	14	23	3 3/4
7	14	24 11/16	3 3/4
8	14	26 7/16	3 3/4
11	14	33 3/16	3 3/4
12	14	35 7/16	3 3/4
13	14	39 3/16	3 3/4
14	14	43 7/16	3 3/4
15	14	43 7/16	4 5/8
R3	12 1/2	21 3/16	4 5/8
R4	14	33 3/16	4 5/8
R6	14	35 3/17	4 5/8
R7	14	39 3/16	4 5/8
R8	14	43 11/16	5 3/4



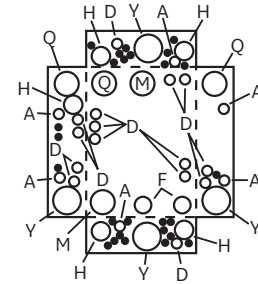
Boxes 4, 6, 7, 8, 11, 12, 13, 14, 15



Boxes R3, R4, R6, R7, R8

Indoor Enclosure Knockouts

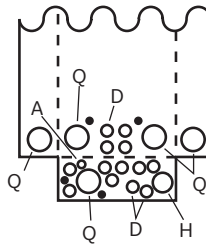
Symbol	A	•	B	C	D	F	H	K	M	N	Q	S	Y
	5/16	-	-	-	-	-	-	-	-	-	-	-	-
	-	3/8	-	3/8	-	3/8	-	-	-	-	-	-	-
	-	1/2	1/2	1/2	1/2	1/2	1/2	-	-	-	-	-	-
	-	-	-	3/4	3/4	3/4	3/4	3/4	-	-	-	-	3/4
	-	-	-	-	-	1	1	1	1	-	1	-	1
Conduit Size in inches	-	-	-	-	-	-	1 1/4	1 1/4	1 1/4	1 1/4	-	1 1/4	1 1/4
	-	-	-	-	-	-	-	1 1/2	1 1/2	1 1/2	1 1/2	1 1/2	1 1/2
	-	-	-	-	-	-	-	-	2	2	2	2	2
	-	-	-	-	-	-	-	-	-	-	2 1/2	2 1/2	2 1/2
	-	-	-	-	-	-	-	-	-	-	-	3	-
	-	-	-	-	-	-	-	-	-	-	-	-	-
	-	-	-	-	-	-	-	-	-	-	-	-	-



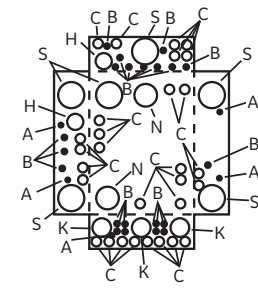
Boxes 4, 6, 7, 8, 11, 12, 13, 14

Outdoor Enclosure Knockouts

Symbol	A	•	D	H	Q
	9/16	-	-	-	-
	-	3/8	-	-	-
	-	1/2	1/2	1/2	-
	-	-	3/4	3/4	3/4
	-	-	-	1	1
Conduit Size in inches	-	-	-	1 1/4	1 1/4
	-	-	-	-	1 1/2
	-	-	-	-	2
	-	-	-	-	2 1/2
	-	-	-	-	-
	-	-	-	-	-
	-	-	-	-	-



Boxes R3, R4, R6, R7, R8



Box 15