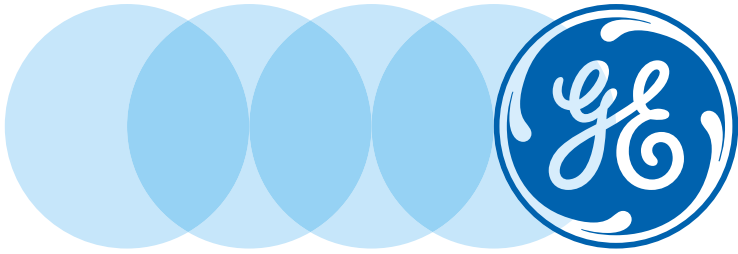


GE Is Ready for MEG Changes!



As of July 1, 2016, the Meter Equipment Group (MEG) will have new requirements. Our products meet the new requirements and are ready to go! Contact your GE salesperson to place your order.



**METERGROUP
EQUIPMENT**

MEG Approved Products

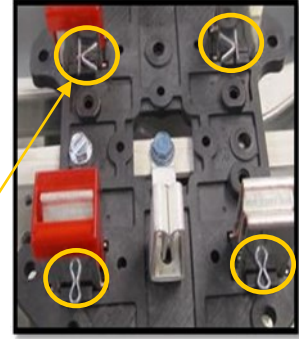
Introduction

A new utility group has been created called Meter Equipment Group (MEG). MEG consists of the following utilities:

- Florida Power & Light (Florida)
- Tampa Electric (Florida)
- Gulf Power (Florida)
- Oklahoma Gas & Electric (Oklahoma)
- Duke Energy (Florida, North and South Carolina, Indiana, Ohio and Kentucky)

MEG has begun to standardize their spec concerning our Meter Socket Load Center, Mini Mod and Meter Mod III product lines.

Effective July 1, 2016, MEG will have new specifications for the residential Mini Mod and Meter Mod units (TMM, TMMR, TMP, TMPR) this includes additional requirements on the construction of the socket assembly. They now require a cotter pin (really a spring type pin) that gets inserted into the meter stabs. This helps prevent the meter from coming loose from the stabs.



This change is applicable on the 125A and 200A plug-in style meter sockets without lever bypass and includes both Ring and Ringless designs. This change is going into effect 7/1/2016 for locations outside of Florida (the Florida team implemented this earlier this year).

We received approval from MEG for a new set of catalog numbers, identified with the "F" suffix, for the Mini Mod and Meter Mod III product families. These new catalog numbers indicate that the socket base has cotter pins installed through the jaws as shown in the photo above.

Mini Mod III Ring-Type and Ringless - MEG Approved 125A & 200A Sockets

- UL Listed (Panelboards No. 67)
- Indoor/Outdoor Construction
- Ring-Type and Ringless Meter Sockets
- Bondable Neutral, Strap Included
- 11-inch Mounting Z Rail included
- Swing Away Mounting Feet Factory Installed
- Underground, incoming feed only



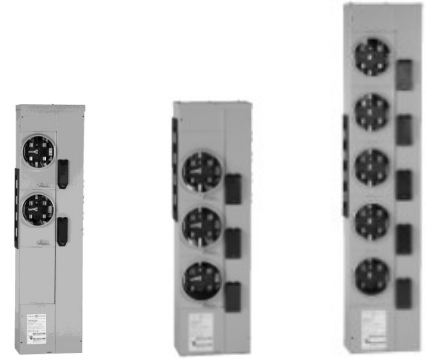
Socket Amps	# of Sockets	Main Ampere Rating	Ring-Type Socket ¹	Ringless Socket (5th Jaw Socket Standard)	Main Wire Size AWG/kcmil Cu/Al - Phase	Service Ground	Equipment Ground
125	2	200	TMM2212RF ²	TMMR2212RF ²	(1) 6-300	6-2/0	14-4
	3	400	TMM4312RF	TMMR4312RF	(1) 6-600 or (2) 2/0-250	4-300	
	4	400	TMM4412RF	TMMR4412RF			
	5	600	TMM6512RF	TMMR6512RF	(2) 250-500		
	6	600	TMM6612RF	TMMR6612RF			
200	2	400	Use TMM6320R	TMMR4220RF	(2) 250-500	6-2/0	14-4
	3	600	TMM6320RF	TMMR6320RF		4-300	
	4	600	TMM6420RF	TMMR6420RF			
	5	600	Use Ringless or Meter Mod III	TMMR6520RF			
	6	600	Use Ringless or Meter Mod III	TMMR6620RF			

¹One snap-type, aluminum sealing ring (TSR5) per socket included.

²May be fed from overhead. Use hub TC300

Meter Stack Modules—Residential— Single Phase — MEG Approved
800A Horizontal Bussing
125 & 200A Sockets

- 800 amp, 4 Wire Crossbus (Aluminum)
- UL Listed
- Front Accessible Field Phase Balancing by Meter Stack
- (1) 14-4 Equipment Ground per Socket, Factory Installed
- Meter Equipment Group Approved



Socket Amps	# of Sockets	Ring Type Socket	Ringless Type Socket (4 Jaw Socket Standard)	Ringless Type Socket (4 Jaw Socket Standard) Horned Bypass Factory Installed
125	2	TMP8212RF ¹	TMPR8212RF	TMPR8212RHBF
	3	TMP8312RF ¹	TMPR8312RF	TMPR8312RHBF
	4	TMP8412RF ¹	TMPR8412RF	TMPR8412RHBF
	5	TMP8512RF ¹	TMPR8512RF	
	6	TMP8612RF ¹	TMPR8612RF	TMPR8612RF
200	2		TMPR8220RF	
	3	TMP8320RF ¹	TMPR8320RF	
	4	TMP8420RF ¹	TMPR8420RF	TMPR8420RHBF
	5		TMPR8520RF	

¹ One snap-type, aluminum sealing ring (TSR5) per socket included

Meter Stack Modules—Residential— Single Phase—MEG Approved
1200A Horizontal Bussing
125 & 200A Sockets

- 1200 amp, 4 Wire Crossbus (Aluminum)
- UL Listed
- Front Accessible Field Phase Balancing by Meter Stack
- (1) 14-4 Equipment Ground per Socket, Factory Installed
- Meter Equipment Group Approved

Socket Amps	# of Sockets	Ring Type Socket	Ringless Type Socket (4 Jaw Socket Standard)	Ringless Type Socket (4 Jaw Socket Standard) Horned Bypass Factory Installed
125	2	TMP12212RF	TMPR12212RF	TMPR12212RF + TMBPH20A
	3	TMP12312RF	TMPR12312RF	TMPR12312RF + TMBPH20A
	4	TMP12412RF	TMPR12412RF	TMPR12412RHBF ¹
	5	TMP12512RF	TMPR12512RF	TMPR12512RHBF ¹
	6	TMP12612RF	TMPR12612RF	TMPR12612RF + TMBPH20A
200	2	TMP12220RF	TMPR12220RF	TMPR12220RF + TMBPH20A
	3	TMP12320RF	TMPR12320RF	TMPR12320RF + TMBPH20A
	4	TMP12420RF	TMPR12420RF	TMPR12420RHBF ¹
	5	TMP12520RF	TMPR12520RF	TMPR12520RF + TMBPH20A

¹ Includes horned bypass

PowerMark* Gold Meter Socket Load Centers

Main Ampere Rating	1 Pole, 1" Spaces	2 Pole, 1" Spaces	1 Pole, 1/2" Spaces	2 Pole, 1/2" Spaces	Total 1 Pole Spaces	Catalog #	Socket Type	Enclosure	Feed-Thru Lugs	Front Type	Bypass Type	Bussing Type	UL Incoming	Agency Certification
--------------------	-------------------	-------------------	---------------------	---------------------	---------------------	-----------	-------------	-----------	----------------	------------	-------------	--------------	-------------	----------------------

Main Breaker / Ringless/ Single-Phase, 3 Wire, 120/240 Vac with Bonded Neutrals

150	4	2	8	3	8	TSMR415CSFLFMG	Ringless	Outdoor (NEMA 3R)	Yes	Surface	None	Copper	OH/UG	UL/MEG
200	4	2	8	3	TSMR420CSFLFMG									
150	8	4	16	6	TSMR815CSFLFMG	No								
200	8	4	16	6	TSMR820CSFLFMG									
	20	4	40	18	40	TSMR2020CSCUFMG								

Class 320 / Ringless / Single-Phase, 3 Wire, 120/240 Vac with Bonded Neutrals

300	8	4	16	6	16	TSDR830USCU	Ringless	Outdoor (NEMA 3R)	Yes	Surface	Lever Bypass	Copper	UG	UL/MEG
400	8	4	16	6	16	TSDR840UFCU								

Meter Main Factory Installed / Ringless / Single-Phase, 3 Wire, 120/240 Vac with Bonded Neutrals

100	0	0	0	0	0	TM10RMCFMG ¹	Ringless	Outdoor (NEMA 3R)	Yes	Surface	None	Copper	OH/UG	UL/MEG
125	0	0	0	0	0	TM12RMCFMG ¹								
150	0	0	0	0	0	TM15RMCFMG ¹								
200	0	0	0	0	0	TM20RMCFMG ¹								

Meter Socket Load Center / Ring Type / Single-Phase, 3 Wire, 120/240 Vac

150	4	2	8	3	8	TSMF415CSFL ¹	Ring Type	Outdoor (NEMA 3R)	Yes	Surface	None	Copper	OH/UG	UL/MEG
	8	4	16	6	16	TSMF815CSFL ¹								
200	4	2	8	3	8	TSMF420CSFL ¹								
	8	4	16	6	16	TSMF820CSFL ¹								

Meter Socket Load Center / Ringless / Single-Phase, 3 Wire, 120/240 Vac

This is a Service Entrance MLO rated load center. No more than 6 circuits may be added in total in accordance with NEC code concerning service entrance load centers.

200	6	6	0	0	0	TSLR1220FSAL	Ringless	Outdoor (NEMA 3R)	Yes	Flush	None	Aluminum	OH/UG	UL/MEG
-----	---	---	---	---	---	--------------	----------	-------------------	-----	-------	------	----------	-------	--------

¹ Devices include removable closing cap. Order hub separately.

GE

Industrial Solutions
41 Woodford Avenue
Plainville, CT 06062
1-800-431-7867
www.geindustrial.com

© 2016 General Electric Company

*Indicates a trademark of the General Electric Company and/or its subsidiaries.

Information provided is subject to change without notice. Please verify all details with GE. All values are design or typical values when measured under laboratory conditions, and GE makes no warranty or guarantee, express or implied, that such performance will be obtained under end-user conditions.

04.16 DET-866A