



Industrial
Solutions

Single Socket and Horizontal Metering

AEP Approved



Single Socket Metering—AEP Approved



Application Information

GE's Single Socket Metering products are designed for residential use. They are UL labeled and are manufactured with surface mounted outdoor enclosures. The units in this brochure are approved by AEP.

Our products range from 125A to 320A and are available in single phase or three phase.

Specifications and Features

- Single Phase or Three Phase
- UL Listed
- Tested and UL listed up to 10kAIC short circuit rating
- Selected items are utility approved
- NEMA 3R enclosure
- Integral duplex ground extruded in neutral lug
- G90 galvanized bridge provides superior corrosion resistance
- Heavy duty lug screws provide stronger connection component for reliable termination
- 125A units have horn bypass kit that is field installable by changing slide-nut
- 200A units have jaws made of copper plated alloy and have reinforcing springs to help maintain electrical connections
- 200A units have slide-nuts that allow for ease of installation of conductors and help eliminate lost components

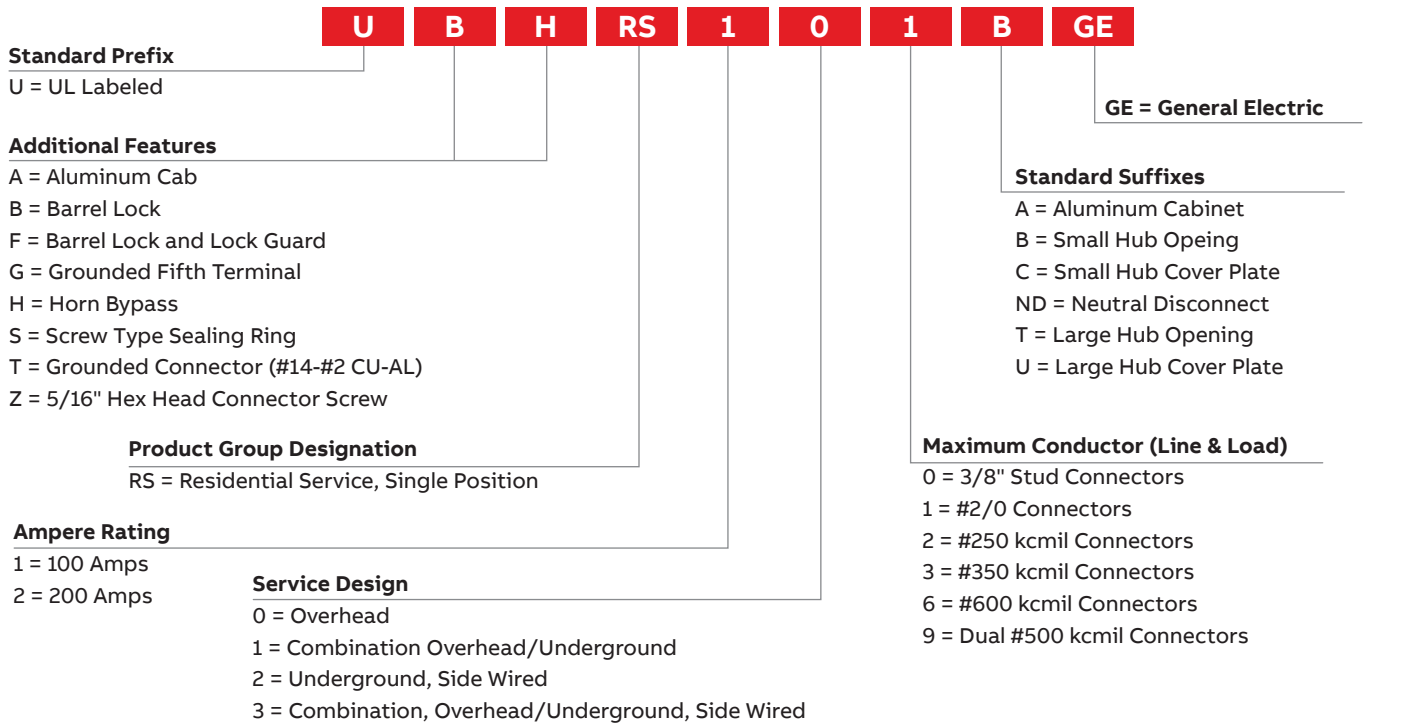


Single Socket Meter

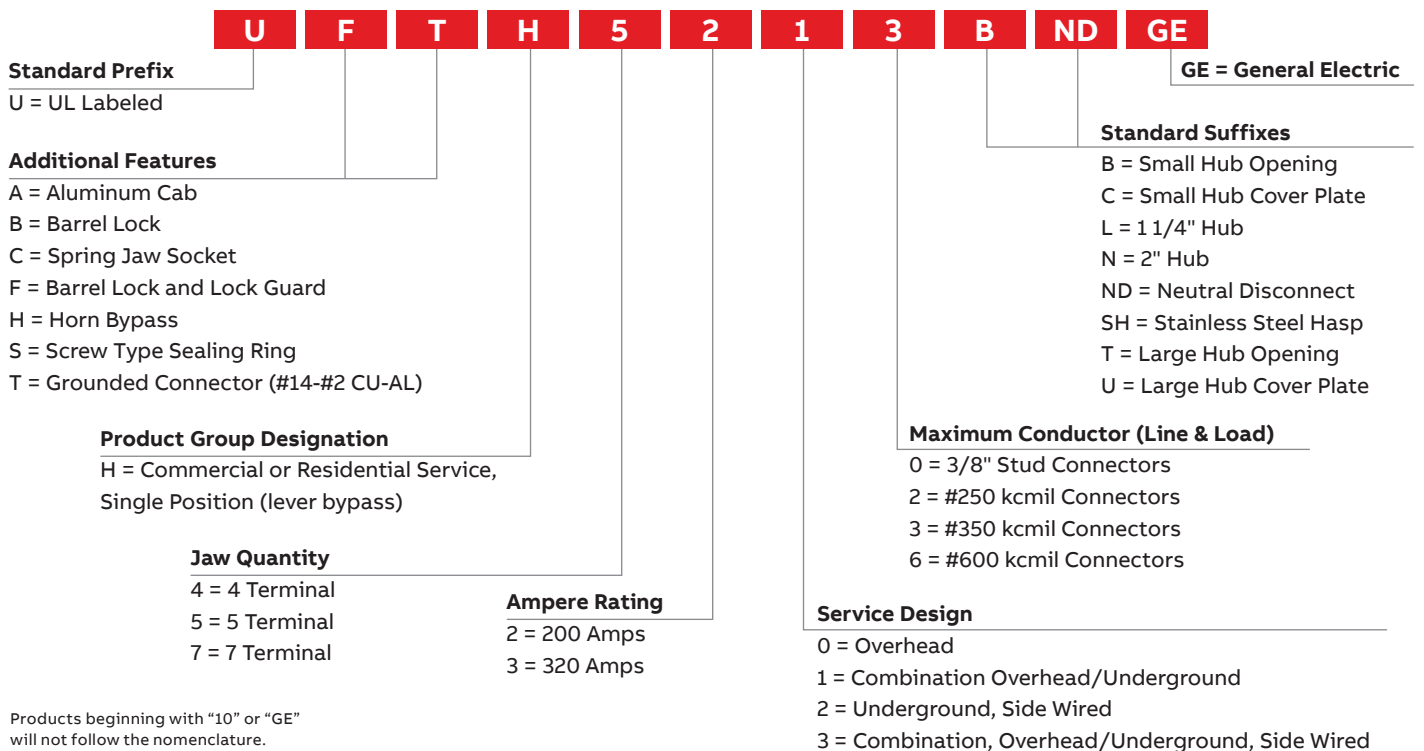
Single Socket Metering—MEG Approved

Single Socket Nomenclature

Sockets with 4 Jaws/Terminals



Sockets with 4, 5 or 7 Jaws/Terminals



Products beginning with "10" or "GE" will not follow the nomenclature.

Single Socket Metering—AEP Approved

Single Phase, 600V

Amp	Catalog Number Ringless	Wire Range (CU/AL)	Overhead/Underground Line Feed	Ground Range (CU/AL)	Triplex Ground	No. of Terminals	Lever Bypass	Horned Bypass	Hub Type	Enclosure N3R	UL & Utility Approved
125	GEKS1AS1BTV	#8-2/0	Top	(1) #14-2	Y	4	N	Y	Small Hub Opening	G90 Steel	UL, AEP
	UFHTRS101BGE	#8-2/0	Top/Bottom	(1) #14-2	Y	4	N	Y	Small Hub Opening		
200	1007665AGE	#8-250MCM	Top/Bottom	(1) #14-2	Y	4	N	Y	Small Hub Opening	Aluminum	
	1011692GE	#6-350MCM	Top/Bottom	(1) #14-2	Y	4	Y	N	Small Hub Cover Plate		
	GEKS1CS1BJTV	#8-250MCM	Top	(1) #14-2	Y	4	N	Y	Small Hub Opening	G90 Steel	
	GEKS1CS1DTV	#8-350MCM	Top/Bottom	(1) #14-2	Y	4	N	Y	Small Hub Cover Plate		
	GEKS1DS1ATV	#8-350MCM	Side	(1) #14-2	Y	4	N	Y	Solid Top		
	UFHTRS202BGE	#8-250MCM	Top/Bottom	(1) #14-2	Y	4	N	Y	Small Hub Opening		
	UFHTRS223AGE	#8-350MCM	Bottom	(1) #14-2	Y	4	N	Y	Solid Top		
	UFHTRS233CGE	#8-350MCM	Top/Bottom	(1) #14-2	Y	4	N	Y	Small Hub Cover Plate		
	UFTH4213CGE	#6-350MCM	Top/Bottom	(1) #14-2	Y	4	Y	N	Small Hub Cover Plate		
	UAFHTRS202BSHGE	#8-250MCM	Top/Bottom	(1) #14-2	Y	4	N	Y	Small Hub Opening		
UAFHTRS223ASHGE	#8-350MCM	Bottom	(1) #14-2	Y	4	N	Y	Solid Top			
320	1008068GE	(2) #6-350MCM	Top/Bottom	(1) #14 -1/0	Y	4	Y	N	Large Hub Cover Plate	Aluminum	
	UAFTH4330TSHGE ¹	Studs - (1) 600MCM or (2) 350MCM	Top/Bottom	(1) #14 -1/0	Y	4	Y	N	Large Hub Opening		
	UAFTH4336TSHGE	#4-600MCM	Top/Bottom	(1) #14 -1/0	Y	4	Y	N	Large Hub Opening	G90 Steel	
	UFTH4330TGE ¹	Studs - (1) 600MCM or (2) 350MCM	Top/Bottom	(1) #14 -1/0	Y	4	Y	N	Large Hub Opening		
	UFTH4336TGE	#4-600MCM	Top/Bottom	(1) #14 -1/0	Y	4	Y	N	Large Hub Opening		

Three Phase, 600V

Amp	Catalog Number Ringless	Wire Range (CU/AL)	Overhead/Underground Line Feed	Ground Range (CU/AL)	Triplex Ground	No. of Terminals	Lever Bypass	Horned Bypass	Hub Type	Enclosure N3R	UL & Utility Approved
200	UAFTH7213TSHGE	#6-350MCM	Top/Bottom	(1) #14-2	Y	7	Y	N	Large Hub Opening	Aluminum	UL, AEP
	UFTH7213BGE	#6-350MCM	Top/Bottom	(1) #14-2	Y	7	Y	N	Small Hub Opening		
	UFTH7213TGE	#6-350MCM	Top/Bottom	(1) #14-2	Y	7	Y	N	Large Hub Opening	G90 Steel	
	UFTH7213TGE	#6-350MCM	Top/Bottom	(2) #14-2	Y	7	Y	N	Large Hub Opening		
320	UAFTH7330TSHGE ¹	Studs - (1) 600MCM or (2) 350MCM	Top/Bottom	(1) #14 -1/0	Y	7	Y	N	Large Hub Opening	Aluminum	
	UAFTH7336TSHGE	#4-600MCM	Top/Bottom	(1) #14 -1/0	Y	7	Y	N	Large Hub Opening		
	UFTH7330TGE ¹	Studs - (1) 600MCM or (2) 350MCM	Top/Bottom	(1) #14 -1/0	Y	7	Y	N	Large Hub Opening	G90 Steel	
	UFTH7336TGE	#4-600MCM	Top/Bottom	(1) #14 -1/0	Y	7	Y	N	Large Hub Opening		
	UFTH7330TGE ¹	Studs - (1) 600MCM or (2) 350MCM	Top/Bottom	(2) #14-1/0	Y	7	Y	N	Large Hub Opening		
UFTH7336TGE	#4-600MCM	Top/Bottom	(2) #14-1/0	Y	7	Y	N	Large Hub Opening			

¹ Lugs not included. This product comes with studs only. Order lugs separately, see accessories on page 10. One (1) lug per kit, order appropriate quantity needed. For example, order 3 lugs (A, C, N) if meter is single-phase or 4 lugs (A, B, C, N) if meter is three-phase.

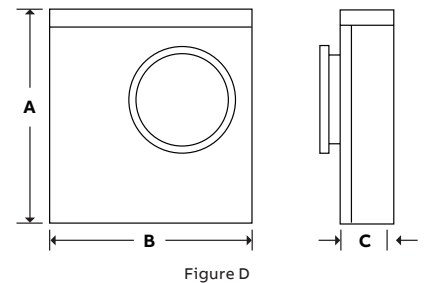
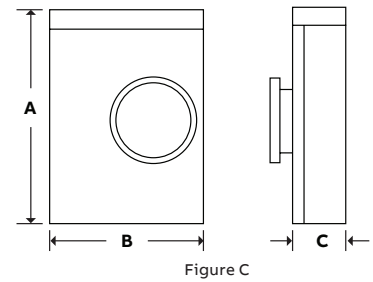
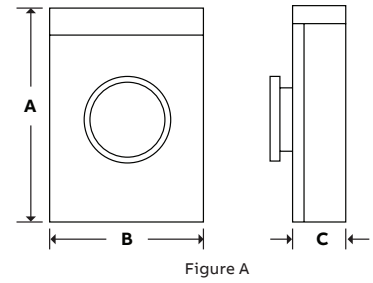
Single Socket Metering—MEG Approved

Single or Three Phase, 600V

Amp	Catalog Number Ringless	Wire Range (CU/AL)	Overhead/Underground Line Feed	Ground Range (CU/AL)	Triplex Ground	No. of Terminals	Lever Bypass	Horned Bypass	Hub Type	Enclosure N3R	UL & Utility Approved
200	UAFTH5213BNDGE	#6-350MCM	Top/Bottom	(1) #14-2	Y	5	Y	N	Small Hub Opening	Aluminum	UL,AEP
	UFTH5213BNDGE	#6-350MCM	Top/Bottom	(1) #14-2	Y	5	Y	N	Small Hub Opening	G90 Steel	

Dimensions and Enclosure Style

Catalog Number	Height (A) Inches	Width (B) Inches	Depth (C) Inches	Gross Weight lbs.	Enclosure Style
1007665AGE	14.00	8.00	4.38	12.00	A
1008068GE	34.50	16.44	6.50	39.00	C
1011692GE	19.00	13.00	4.94	25.00	A
GEKS1AS1BTV	10.88	8.00	3.50	7.00	A
GEKS1CS1BJTV	14.00	8.00	4.38	11.00	A
GEKS1CS1DTV	15.00	11.00	4.38	14.00	A
GEKS1DS1ATV	13.00	13.00	4.94	15.00	D
UAFTH4330TSHGE	36.63	15.00	5.69	22.00	C
UAFTH4336TSHGE	36.63	15.00	5.69	28.00	C
UAFTH5213BNDGE	19.00	13.00	4.94	19.00	A
UAFTH7213TSHGE	19.00	13.00	4.94	19.00	A
UAFTH7330TSHGE	39.88	20.00	6.50	37.00	C
UAFTH7336TSHGE	39.88	20.00	6.50	39.00	C
UAFHTRS202BSHGE	14.00	8.00	4.38	8.00	D
UAFHTRS223ASHGE	14.00	8.00	4.38	10.00	D
UFHTRS101BGE	10.88	8.00	3.50	8.00	A
UFHTRS202BGE	14.00	8.00	4.38	12.00	A
UFHTRS223AGE	13.00	13.00	4.94	16.00	A
UFHTRS233CGE	17.13	13.00	4.94	18.00	C
UFTH4213CGE	19.00	13.00	4.94	25.00	A
UFTH4330TGE	36.63	15.00	5.69	41.00	C
UFTH4336TGE	36.63	15.00	5.69	42.00	C
UFTH5213BNDGE	19.00	13.00	4.94	26.00	A
UFTH7213BGE	19.00	13.00	4.94	26.00	A
UFTH7213TGE	19.00	13.00	4.94	26.00	A
UFTH7330TGE	39.88	20.00	6.50	65.00	C
UFTH7336TGE	39.88	20.00	6.50	42.00	C
UFTTH7213TGE	19.00	13.00	4.94	26.00	A
UFTTH7330TGE	39.88	20.00	6.50	65.00	C
UFTTH7336TGE	39.88	20.00	6.50	67.00	C



Single Socket Metering—AEP Approved

Knockout Drawings and Dimensions

Catalog Number	Knockout Figure
1007665AGE	S
1008068GE	G
1011692GE	N
GEKS1AS1BTV	I
GEKS1CS1BJTV	J
GEKS1CS1DTV	H
GEKS1DS1ATV	K
UAFTH4330TSHGE	F
UAFTH4336TSHGE	F
UAFTH5213BNDGE	N
UAFTH7213TSHGE	N
UAFTH7330TSHGE	V
UAFTH7336TSHGE	V
UAFHTRS202BSHGE	AN
UAFHTRS223ASHGE	AO
UFHTRS101BGE	W
UFHTRS202BGE	J
UFHTRS223AGE	K
UFHTRS233CGE	K
UFTH4213CGE	N
UFTH4330TGE	F
UFTH4336TGE	F
UFTH5213BNDGE	N
UFTH7213BGE	N
UFTH7213TGE	N
UFTH7330TGE	V
UFTH7336TGE	V
UFTTH7213TGE	N
UFTTH7330TGE	V
UFTTH7336TGE	V

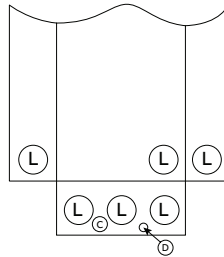


Figure F

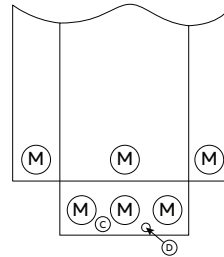


Figure G

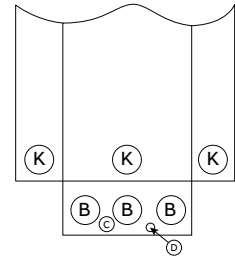


Figure H

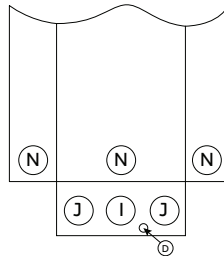


Figure I

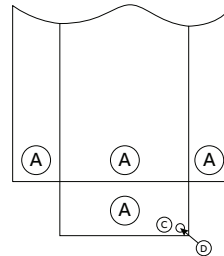


Figure J

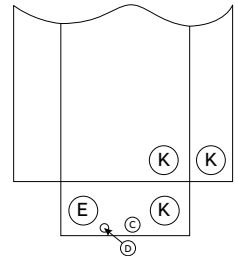


Figure K

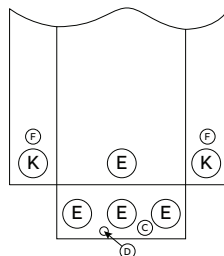


Figure N

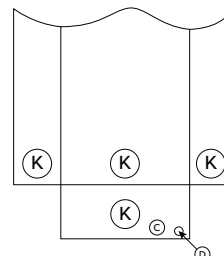


Figure S

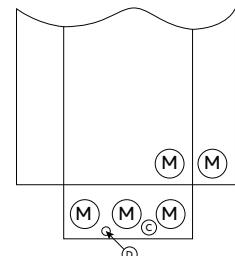


Figure V

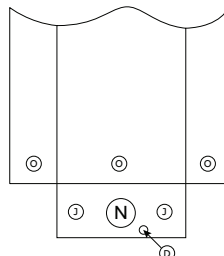


Figure W

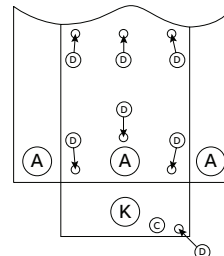


Figure AN

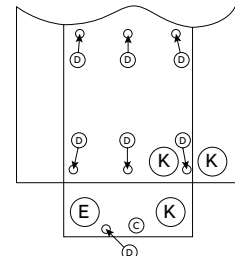


Figure AO

Knockout Dimensions (inches)

A = 1-1/2, 2, 2-1/2	J = 1/2, 3/4, 1, 1-1/4
B = 1-1/4, 1-1/2, 2, 2-1/2	K = 1, 1-1/4, 1-1/2, 2, 2-1/2
C = 1/2	L = 2, 2-1/2, 3, 3-1/2
D = 5/16	M = 2, 2-1/2, 3, 3-1/2, 4
E = 2, 2-1/2, 3	N = 1, 1-1/4, 1-1/2, 2
F = 1/2, 3/4	O = 1/2, 3/4, 1, 1-1/4, 1-1/2
I = 1-1/4, 1-1/2, 2	

Horizontal Metering—AEP Approved



Application Information

GE's Horizontal Metering products offer 600V metering solutions for strip malls and small commercial buildings requiring two to six metering locations. These products accept meters with 200A ratings and they have a compact vertical footprint. The products in this brochure meet all of the AEP utility specification requirements.

Specifications and Features

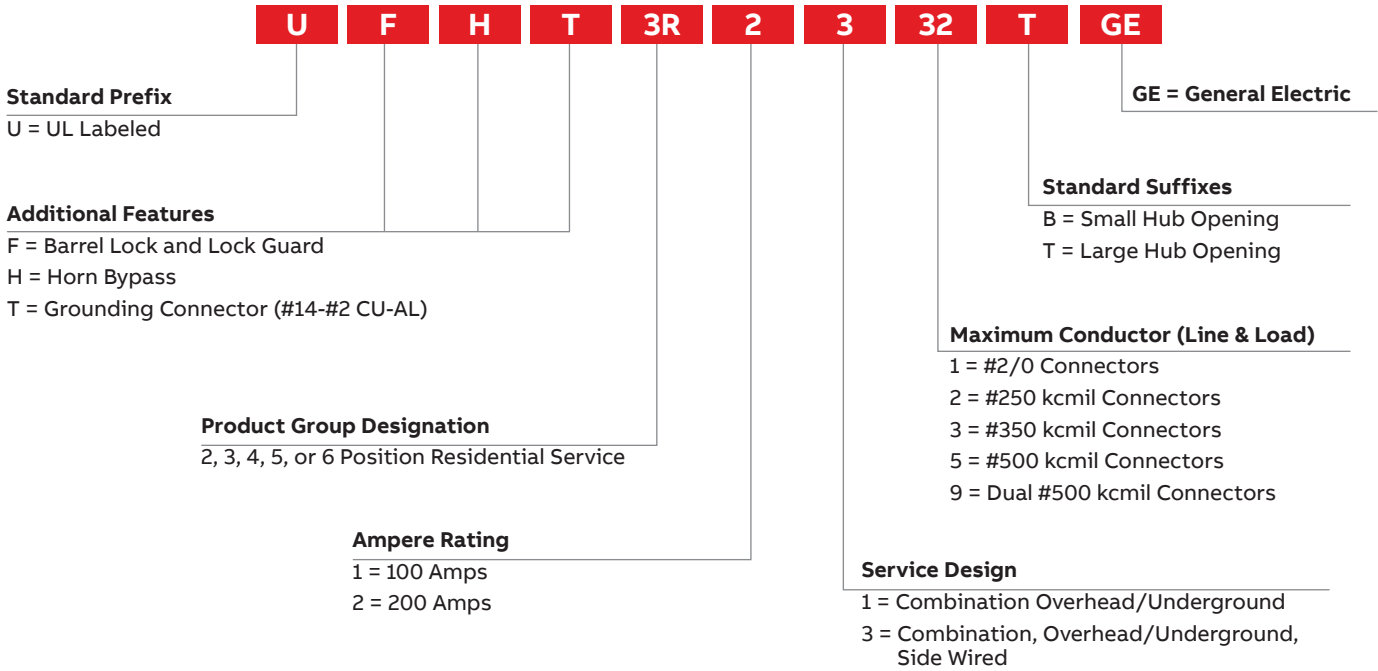
- Single Phase
- Top/Bottom Feed
- UL Listed
- Selected items are utility approved
- NEMA 3R enclosure
- Multiple hub opening and closure plate sizes available
- Hub opening in top endwall, requires use of a bolt-on hub or closing plate
- 1Ø, 600 Vac maximum
- Main lugs only
- End or center feed
- Overhead and underground service feeds
- 10 kAIC short circuit rating (or higher with utility approval)



Horizontal Metering

Horizontal Metering—AEP Approved

Horizontal Nomenclature



Single Phase, 600V

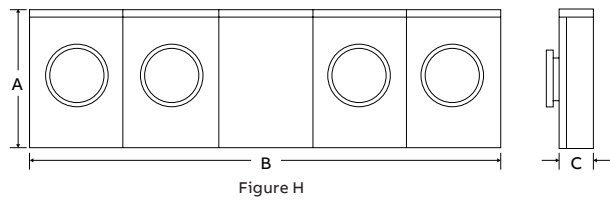
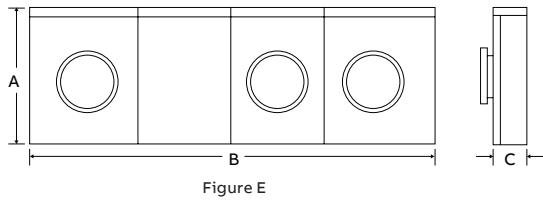
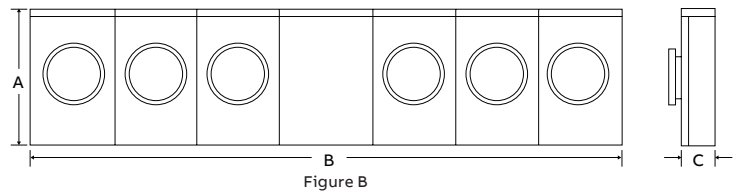
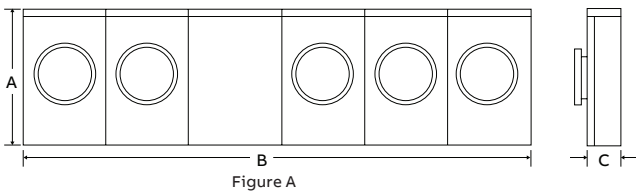
Amp	Gang	Catalog Number Ringless	Feed Type	Overhead/Underground Line Feed	Line Wire Range	Ground Lug Size	Triplex Ground	No. of Terminals	Lever Bypass	Horned Bypass	Hub Type	Enclosure N3R	UL & Utility Approved
200	2	UFHT2R2332TGE	Center	Top/Bottom	#8-350MCM Line #8-250MCM Load	(1) #14-2	Y	4	N	Y	Large Hub Opening	G90 Steel	UL, AEP
	3	UFHT3R2332TGE	Center	Top/Bottom	#6-350MCM Line #8-250MCM Load	(1) #14-2	Y	4	N	Y	Large Hub Opening		
	4	UFHT4R2352TGE	Center	Top/Bottom	1/0-500MCM Line #8-250MCM Load	(1) #14-1/0	Y	4	N	Y	Large Hub Opening		
	5	UFHT5R2392TTGE	Center	Top/Bottom	1/0-500MCM Line #8-250MCM Load	(1) #14-2/0	Y	4	N	Y	(2) Large Hub Openings		
	6	UFHT6R2392TTGE	Center	Top/Bottom	1/0-500MCM Line #8-250MCM Load	(1) #14-2/0	Y	4	N	Y	(2) Large Hub Openings		

Horizontal Metering—AEP Approved

Dimensions and Enclosure Style

Catalog Number	Height (A) Inches	Width (B) Inches	Depth (C) Inches	Gross Weight lbs.	Enclosure Style	Standard Pack
UFHT2R2332TGE	14.13	24.31	5.38	30.00	B	1
UFHT3R2332TGE	14.13	32.47	5.38	41.00	E	1
UFHT4R2352TGE	14.13	40.63	5.38	52.00	H	1
UFHT5R2392TTGE	14.13	54.78	5.38	67.00	A	1
UFHT6R2392TTGE	14.13	82.94	5.38	78.00	B	1

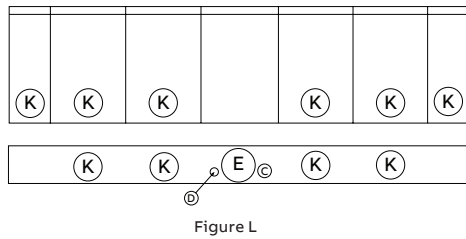
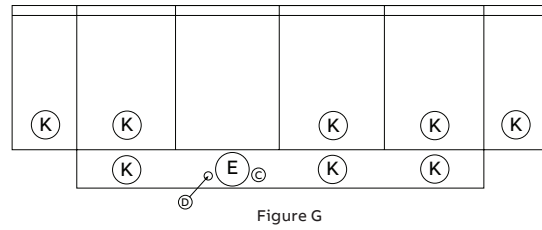
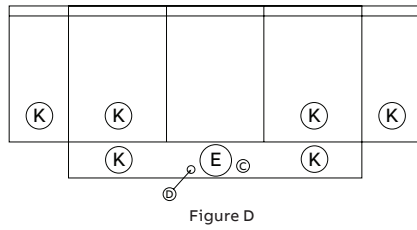
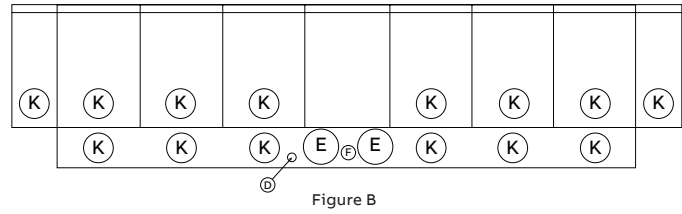
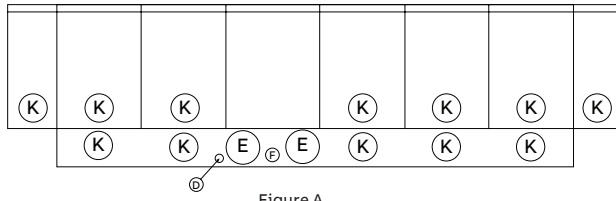
Enclosures



Horizontal Metering—AEP Approved

Knockout Drawings and Dimensions

Catalog Number	Knockout Figure	Standard Pack
UFHT2R2332TGE	D	1
UFHT3R2332TGE	G	1
UFHT4R2352TGE	L	1
UFHT5R2392TTGE	A	1
UFHT6R2392TTGE	B	1



Knockout Dimensions (inches)
C = 1/2
D = 5/16
E = 2, 2-1/2, 3
F = 1/2, 3/4
K = 1, 1-1/4, 1-1/2, 2, 2-1/2

Single Socket and Horizontal Metering

Accessories

Catalog Number	Description
ARP00118GE	One Lug for (2) #6-250MCM Cables/Phase
ARP00429GE	One Lug for (1) #4-600M Cables/Phase or (2) 1/0-250 Cables/Phase
ARP00129GE	Connector Kit #4-600MCM
ARP00326GE	5th Terminal Kit Lever Bypass
ARP00035GE	5th Terminal Kit Non-Lever Bypass
ARP00984GE	Anti-Inversion Clip (10 per package)
1006630AGE	Auxiliary Contacts Enclosure G90
ARP00920GE	Plastic Meter Socket Cover Plate
ARP00002GE	Bolt-on Cover Plate, Small, 3 5/16" x 3 5/16"
ARP00016GE	Bolt-on Cover Plate, Large, 5" x 5"



ARP00035GE



ARP00920GE

Hub Kits

Catalog Number	Description
ARP00003GE	1" Hub Kit, Small
ARP00004GE	1.25" Hub Kit, Small
ARP00005GE	1.5" Hub Kit, Small
ARP00006GE	2" Hub Kit, Small
ARP00007GE	2.5" Hub Kit, Small
ARP00017GE	2" Hub Kit, Large
ARP00018GE	2.5" Hub Kit, Large
ARP00019GE	3" Hub Kit, Large
ARP00020GE	3.5" Hub Kit, Large
ARP00021GE	4" Hub Kit, Large



Small Hub



Large Hub

