



Industrial
Solutions

Single Socket Metering





Application Information

GE's Single Socket Metering products are designed for residential use. They are UL labeled and are manufactured with surface mounted outdoor enclosures. Many of our units are utility approved (see tables on following pages).

Our products range from 20A to 320A and are available in single phase or three phase.

Specifications and Features

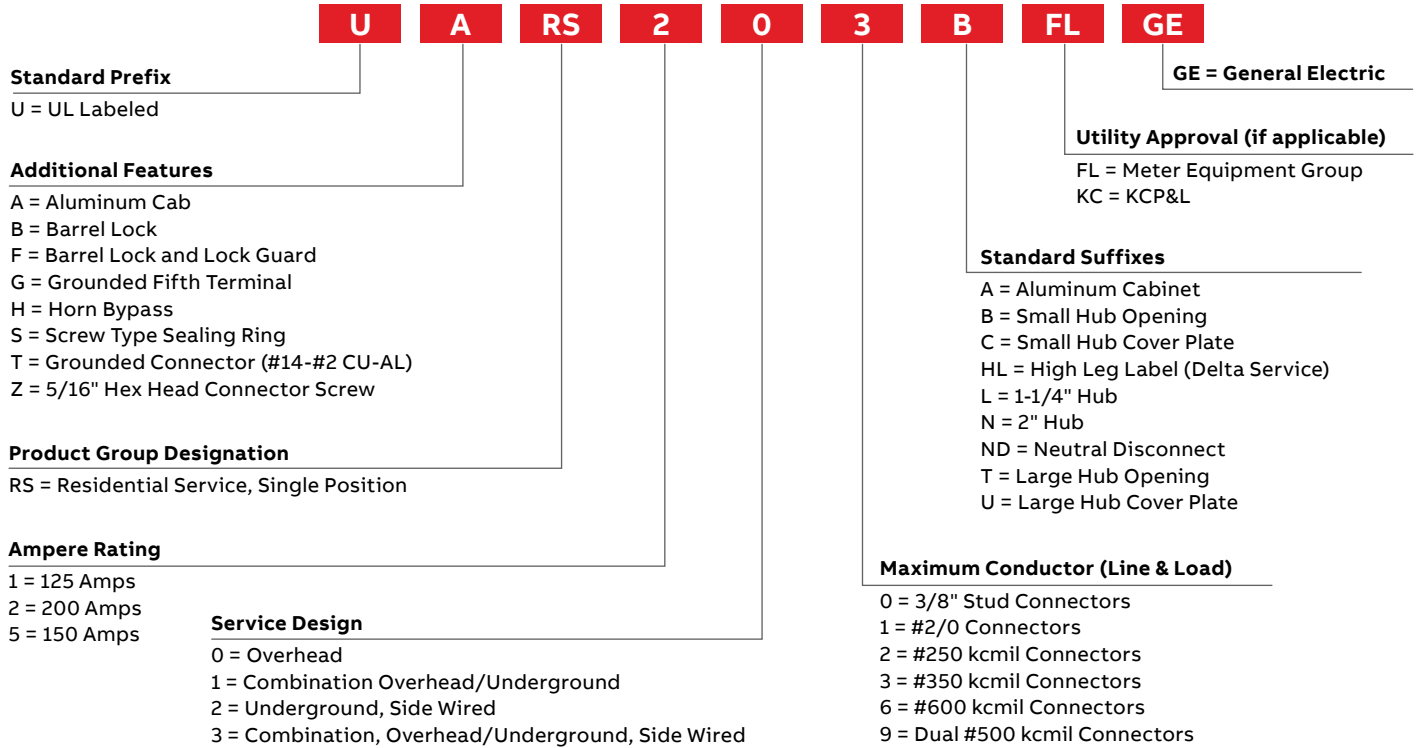
- Single Phase or Three Phase
- UL Listed
- Tested and UL listed up to 10kAIC short circuit rating
- Selected items are utility approved
- NEMA 3R enclosure
- Integral duplex ground extruded in neutral lug
- G90 galvanized bridge provides superior corrosion resistance
- Heavy duty lug screws provide stronger connection component for reliable termination
- 125A units have horn bypass kit that is field installable by changing slide-nut
- 200A units have jaws made of copper plated alloy and have reinforcing springs to help maintain electrical connections
- 200A units have slide-nuts that allow for ease of installation of conductors and helps eliminate lost components
- Standard pack: 1



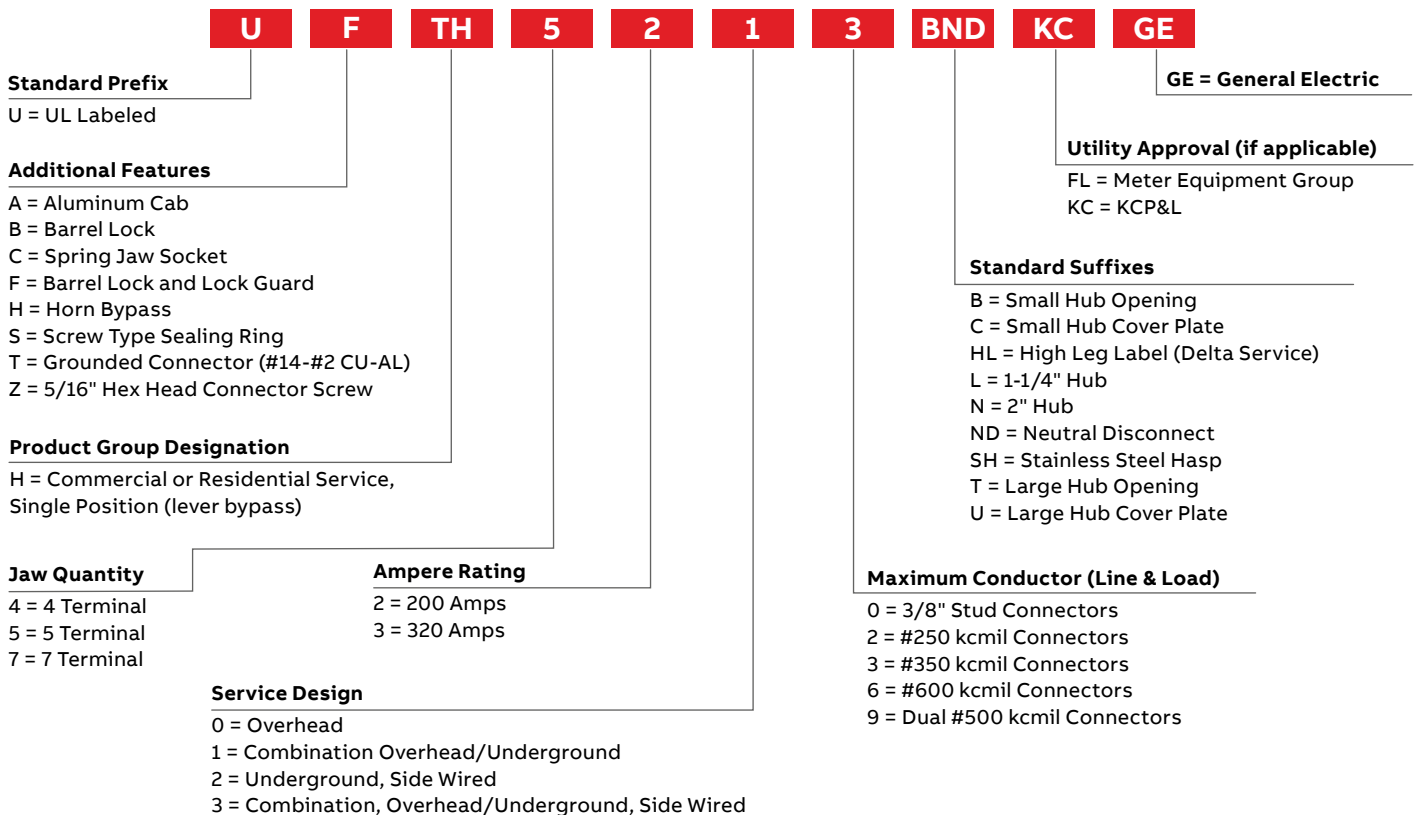
Single Socket Meter

Nomenclature

Sockets with 4 Jaws/Terminals



Sockets with 4, 5 or 7 Jaws/Terminals



Single Phase, 600V, Ringless

Amp	Catalog Number	Wire Range (CU/AL)	Overhead/Underground Line Feed	Ground Range (CU/AL)	Triplex Ground	No. of Terminals	Lever Bypass	Horned Bypass	Hub Type	Enclosure N3R	UL & Utility Approved
20	1007003CGE	#12	Bottom	(2) #14-2	N	13	N	N	Solid Top	G90 Steel	UL, DTE
	1007361CGE	#12	Bottom	(2) #14-2	N	8	N	N	Solid Top		
125	1006385BGE	#8-2/0	Bottom	No Ground	N	4	N	N	Solid Top	G90 Steel	UL
	GEKR1AS1BTZ	#8-2/0	Top	(1) #14-2	Y	4	N	N	Small Hub Opening		
	GEKS1AS1BTV	#8-2/0	Top	(1) #14-2	Y	4	N	Y	Small Hub Opening		
	UATR1S101CFLGE	#8-2/0	Top/Bottom	(1) #14-2	Y	4	N	N	Small Hub Cover Plate		
	UBHRS101BGE	#8-2/0	Top/Bottom	No ground	N	4	N	Y	Small Hub Opening		
	UFHTRS101BGE	#8-2/0	Top/Bottom	(1) #14-2	Y	4	N	Y	Small Hub Opening		
	UGHTRS101BGE	#8-2/0	Top/Bottom	(1) #14-2	Y	5	N	Y	Small Hub Opening		
	UHTRS101BGE	#8-2/0	Top/Bottom	(1) #14-2	Y	4	N	Y	Small Hub Opening		
	URS101BCPLGE	#8-2/0	Top/Bottom	(2) #14-2	Y	4	N	N	Small Hub Opening		
	URS101CCPLGE	#8-2/0	Top/Bottom	(2) #14-2	Y	4	N	N	Small Hub Cover Plate		
	UTRS101BGE	#8-2/0	Top/Bottom	(1) #14-2	Y	4	N	N	Small Hub Opening		
	UTZRS101CFLGE	#8-2/0	Top/Bottom	(1) #14-2	Y	4	N	N	Small Hub Cover Plate		
150	UTRS502BGE	#8-250MCM	Top/Bottom	(1) #14-2	Y	4	N	N	Small Hub Opening	G90 Steel	UL
	1004709DGE	#8-250MCM	Top/Bottom	No Ground	N	4	N	N	Small Hub Opening		
	1004710EGE	#8-250MCM	Top/Bottom	No Ground	N	4	N	N	Small Hub Cover Plate		
	1007665AGE	#8-250MCM	Top/Bottom	(1) #14-2	Y	4	N	Y	Small Hub Opening		
	1007665GE	#8-250MCM	Top/Bottom	(1) #14-2	Y	4	N	Y	Small Hub Opening		
	1011692GE	#6-350MCM	Top/Bottom	(1) #14-2	Y	4	Y	N	Small Hub Cover Plate		
	GEKR1CS1BT	#8-350MCM	Top	(1) #14-2	Y	4	N	N	Small Hub Opening		
	GEKS1CS1BJTV	#8-250MCM	Top	(1) #14-2	Y	4	N	Y	Small Hub Opening		
	GEKS1CS1DTV	#8-350MCM	Top/Bottom	(1) #14-2	Y	4	N	Y	Small Hub Cover Plate		
	GEKS1DS1ATV	#8-350MCM	Side	(1) #14-2	Y	4	N	Y	Solid Top		
	U92197CCPLGE	#8-350MCM	Side	(2) #14-2	N	4	N	N	(2) Small Hub Cover Plates		
	200	UATH4203BFLGE	#6-350MCM	Top/Bottom	(1) #14-2	Y	4	Y	N		
UATH4203TFLGE		#6-350MCM	Top/Bottom	(1) #14-2	Y	4	Y	N	Large Hub Opening		
UATH4213CFLGE		#6-350MCM	Top/Bottom	(1) #14-2	Y	4	Y	N	Small Hub Cover Plate		
UATH4213UFLGE		#6-350MCM	Top/Bottom	(1) #14-2	Y	4	Y	N	Large Hub Cover Plate		
UATRS202BFLGE		#8-250MCM	Top/Bottom	(1) #14-2	Y	4	N	N	Small Hub Opening		
UATRS212CFLGE		#8-250MCM	Top/Bottom	(1) #14-2	Y	4	N	N	Small Hub Cover Plate		
UATRS213AFLGE		#8-350MCM	Bottom	(1) #14-2	Y	4	N	N	Solid Top		
UATRS213CFLGE		#8-350MCM	Top/Bottom	(1) #14-2	Y	4	N	N	Small Hub Cover Plate		
UATRS223AFLGE		#8-350MCM	Bottom	(1) #14-2	Y	4	N	N	Solid Top		
UBHRS202BGE		#8-250MCM	Top	No ground	N	4	N	Y	Small Hub Opening		
UBHRS212BGE		#8-250MCM	Top/Bottom	No ground	N	4	N	Y	Small Hub Opening		
UFHTRS202BGE		#8-250MCM	Top/Bottom	(1) #14-2	Y	4	N	Y	Small Hub Opening		
UFHTRS223AGE		#8-350MCM	Bottom	(1) #14-2	Y	4	N	Y	Solid Top		
UFHTRS233CGE		#8-350MCM	Top/Bottom	(1) #14-2	Y	4	N	Y	Small Hub Cover Plate		
UFTH4213CGE		#6-350MCM	Top/Bottom	(1) #14-2	Y	4	Y	N	Small Hub Cover Plate		
UGHRS212CKCGE		#8-250MCM	Top/Bottom	No ground	N	5	N	Y	Small Hub Cover Plate		
UGHTRS213BGE		#8-350MCM	Top/Bottom	(1) #14-2	Y	5	N	Y	Small Hub Opening		
G90 Steel		UGTH4213CGE	#6-350MCM	Top/Bottom	(1) #14-2	Y	5	Y	N	Small Hub Cover Plate	UL
	UGTRS213CGE	#8-350MCM	Top/Bottom	(1) #14-2	Y	5	N	N	Small Hub Cover Plate		
	UH4213CGE	#6-350MCM	Top/Bottom	No ground	N	4	Y	N	Small Hub Cover Plate		
	UHTRS202BGE	#8-250MCM	Top/Bottom	(1) #14-2	Y	4	N	Y	Small Hub Opening		
	UHTRS223AGE	#8-350MCM	Side	(1) #14-2	Y	4	N	Y	Solid Top		
	U92197CCPLGE	#8-350MCM	Side	(2) #14-2	N	4	N	N	(2) Small Hub Cover Plates		

Catalog numbers beginning with "10" or "GE" will not follow the nomenclature.

Single Phase, 600V, Ringless (continued)

Amp	Catalog Number	Wire Range (CU/AL)	Overhead/Underground Line Feed	Ground Range (CU/AL)	Triplex Ground	No. of Terminals	Lever Bypass	Horned Bypass	Hub Type	Enclosure N3R	UL & Utility Approved
200	UT92197CCFLGE	#8-350MCM	Top/Bottom	(1) #14-2	Y	4	N	N	(2) Small Hub Cover Plates	G90 Steel	UL, GP, MEG
	UTH4203BFLGE	#6-350MCM	Top/Bottom	(1) #14-2	Y	4	Y	N	Small Hub Opening		
	UTH4203TFLGE	#6-350MCM	Top/Bottom	(1) #14-2	Y	4	Y	N	Large Hub Opening		
	UTH4213BGE	#6-350MCM	Top/Bottom	(1) #14-2	Y	4	Y	N	Small Hub Opening	G90 Steel	UL
	UTH4213CFLGE	#6-350MCM	Top/Bottom	(1) #14-2	Y	4	Y	N	Small Hub Cover Plate	G90 Steel	UL, GP, MEG
	UTH4213UFLGE	#6-350MCM	Top/Bottom	(1) #14-2	Y	4	Y	N	Large Hub Cover Plate		
	UTRS202BGE	#8-250MCM	Top/Bottom	(1) #14-2	Y	4	N	N	Small Hub Opening	G90 Steel	UL, CMP
	UTRS212BGE	#8-250MCM	Top/Bottom	(1) #14-2	Y	4	N	N	Small Hub Opening	G90 Steel	UL
	UTRS212CGE	#8-250MCM	Top/Bottom	(1) #14-2	Y	4	N	N	Small Hub Cover Plate		
	UTRS2138BGE	Line: (1) #8-350MCM Load: (2) #8-250MCM	Top/Bottom	(1) #14-2	Y	4	N	N	Small Hub Opening	G90 Steel	UL, MEG
	UTRS213AFLGE	#8-350MCM	Bottom	(1) #14-2	Y	4	N	N	Solid Top		
	UTRS213BGE	#8-350MCM	Top/Bottom	(1) #14-2	Y	4	N	N	Small Hub Opening		
	UTRS213CFLGE	#8-350MCM	Top/Bottom	(1) #14-2	Y	4	N	N	Small Hub Cover Plate		
	UTRS213CGE	#8-350MCM	Top/Bottom	(1) #14-2	Y	4	N	N	Small Hub Cover Plate		
	UTRS223AFLGE	#8-350MCM	Bottom	(1) #14-2	Y	4	N	N	Solid Top		
	UTRS223AGE	#8-350MCM	Bottom	(1) #14-2	Y	4	N	N	Solid Top		
1007672GE ¹	Studs - (1) 600MCM or (2) 350MCM	Top	(1) #14 -1/0	Y	4	Y	N	Large Hub Opening			
1008068GE	(2) #6-350MCM	Top/Bottom	(1) #14 -1/0	Y	4	Y	N	Large Hub Cover Plate			
1008435GE	#4-600MCM	Bottom	(1) #14 -1/0	Y	4	Y	N	Solid Top			
1008836GE ¹	Studs - (1) 600MCM or (2) 350MCM	Top/Bottom	(1) #14 -1/0	Y	4	Y	N	Large Hub Cover Plate			
1008837GE ¹	Studs - (1) 600MCM or (2) 350MCM	Top/Bottom	(1) #14 -1/0	Y	4	Y	N	Large Hub Cover Plate			
1009260GE ¹	Studs - (1) 600MCM or (2) 350MCM	Top/Bottom	(1) #14 -1/0	Y	4	Y	N	Large Hub Cover Plate			
1009788AGE ¹	Studs - (1) 600MCM or (2) 350MCM	Top/Bottom	No Ground	N	4	Y	N	Large Hub Cover Plate			
UAFT4330TSHGE ¹	Studs - (1) 600MCM or (2) 350MCM	Top/Bottom	(1) #14 -1/0	Y	4	Y	N	Large Hub Opening			
UAFT4336TSHGE	#4-600MCM	Top/Bottom	(1) #14 -1/0	Y	4	Y	N	Large Hub Opening			
UATH4300TFLGE ¹	Studs - (1) 600MCM or (2) 350MCM	Top/Bottom	(1) #14 -1/0	Y	4	Y	N	Large Hub Opening			
UFTH4330TGE ¹	Studs - (1) 600MCM or (2) 350MCM	Top/Bottom	(1) #14 -1/0	Y	4	Y	N	Large Hub Opening			
UFTH4336TGE	#4-600MCM	Top/Bottom	(1) #14 -1/0	Y	4	Y	N	Large Hub Opening			
UH43068TCPLGE	Line: (1) #4-600MCM Load: (2) #6-250MCM	Top	(2) #14-2	Y	4	Y	N	Large Hub Opening			
UTH4300TFLGE ¹	Studs - (1) 600MCM or (2) 350MCM	Top/Bottom	(1) #14-1/0	Y	4	Y	N	Large Hub Opening			
UTH4330TGE ¹	Studs - (1) 600MCM or (2) 350MCM	Top/Bottom	(1) #14-1/0	Y	4	Y	N	Large Hub Opening			
UTH43369TGE	Line: (1) #4-600MCM Load: (2) #6-350MCM	Top	(1) #14-1/0	Y	4	Y	N	Large Hub Opening			
UTH73069THLGE	Line: (1) #4-600MCM Load: (2) #6-350MCM	Top/Bottom	(1) #14-1/0	Y	4	Y	N	Large Hub Opening			

¹Lugs not included. This product comes with studs only. Order lugs separately, see accessories on page 14. One (1) lug per kit, order appropriate quantity needed. For example, order 3 lugs (A, C, N) if meter is 1-phase or 4 lugs (A, B, C, N) if meter is 3-phase.

Three Phase, 600V, Ringless

Amp	Catalog Number	Wire Range (CU/AL)	Overhead/ Underground Line Feed	Ground Range (CU/AL)	Triplex Ground	No. of Terminals	Lever Bypass	Horned Bypass	Hub Type	Enclosure N3R	UL & Utility Approved	
20	URSTS132CGE	#10 - #12	Top/Bottom	(1) #14-2	Y	13	N	N	Small Hub Cover Plate	G90 Steel	UL	
	1007670GE	#6-350MCM	Top	(1) #14-2	Y	7	Y	N	Large Hub Opening	G90 Steel	UL, CECHA	
	UAFTH7213TSHGE	#6-350MCM	Top/Bottom	(1) #14-2	Y	7	Y	N	Large Hub Opening	Aluminum	UL, AEP	
	UATH7203BFLGE	#6-350MCM	Top/Bottom	(1) #14-2	Y	7	Y	N	Small Hub Opening	Aluminum	UL, GP, MEG	
	UATH7203TFLGE	#6-350MCM	Top/Bottom	(1) #14-2	Y	7	Y	N	Large Hub Opening			
	UATH7213CFLGE	#6-350MCM	Top/Bottom	(1) #14-2	Y	7	Y	N	Small Hub Cover Plate			
	UATH7213UFLGE	#6-350MCM	Top/Bottom	(1) #14-2	Y	7	Y	N	Large Hub Cover Plate			
	UBC7213BGE	#6-350MCM	Top/Bottom	No ground	N	7	Y	N	Small Hub Opening			
	200	UBH7213TGE	#6-350MCM	Top/Bottom	No ground	N	7	Y	N	Large Hub Opening	G90 Steel	UL
		UFTH7213BGE	#6-350MCM	Top/Bottom	(1) #14-2	Y	7	Y	N	Small Hub Opening	G90 Steel	UL, AEP
		UFTH7213TGE	#6-350MCM	Top/Bottom	(1) #14-2	Y	7	Y	N	Large Hub Opening		
		UFTTH7213TGE	#6-350MCM	Top/Bottom	(2) #14-2	Y	7	Y	N	Large Hub Opening	G90 Steel	UL, DTE
		UH7213CGE	#6-350MCM	Top/Bottom	No ground	N	7	Y	N	Small Hub Cover Plate		
		UH7213CKCGE	#6-350MCM	Top/Bottom	No ground	N	7	Y	N	Small Hub Cover Plate	G90 Steel	UL, KCP&L
		UTH7203BFLGE	#6-350MCM	Top/Bottom	(1) #14-2	Y	7	Y	N	Small Hub Opening	G90 Steel	UL, GP, MEG
		UTH7203TFLGE	#6-350MCM	Top/Bottom	(1) #14-2	Y	7	Y	N	Large Hub Opening		
UTH7203TGE		#6-350MCM	Top/Bottom	(1) #14-2	Y	7	Y	N	Large Hub Opening	G90 Steel	UL, CMP	
UTH7213BGE		#6-350MCM	Top/Bottom	(1) #14-2	Y	7	Y	N	Small Hub Opening	G90 Steel	UL	
UTH7213TGE		#6-350MCM	Top/Bottom	(1) #14-2	Y	7	Y	N	Large Hub Opening	G90 Steel	UL	
UTH7213THLGE		#6-350MCM	Top/Bottom	(1) #14-2	Y	7	Y	N	Large Hub Opening			
UTH7213UGE		#6-350MCM	Top/Bottom	(1) #14-2	Y	7	Y	N	Large Hub Cover Plate	G90 Steel	UL, CMP	
320		UAFTH7330TSHGE ¹	Studs - (1) 600MCM or (2) 350MCM	Top/Bottom	(1) #14 -1/0	Y	7	Y	N	Large Hub Opening	Aluminum	UL, AEP
	UAFTH7336TSHGE	#4-600MCM	Top/Bottom	(1) #14 -1/0	Y	7	Y	N	Large Hub Opening			
	UATH7300TFLGE ¹	Studs - (1) 600MCM or (2) 350MCM	Top/Bottom	(1) #14 -1/0	Y	7	Y	N	Large Hub Opening	Aluminum	UL, MEG	
	UATH7300UFLGE ¹	Studs - (1) 600MCM or (2) 350MCM	Top/Bottom	(1) #14 -1/0	Y	7	Y	N	Large Hub Cover Plate			
	UATH7330UFLGE ¹	Studs - (1) 600MCM or (2) 350MCM	Side	(1) #14 -1/0	Y	7	Y	N	Large Hub Cover Plate	Aluminum	UL, GP, MEG	
	UFTH7330TGE ¹	Studs - (1) 600MCM or (2) 350MCM	Top/Bottom	(1) #14 -1/0	Y	7	Y	N	Large Hub Opening	G90 Steel	UL, AEP	
	UFTH7336TGE	#4-600MCM	Top/Bottom	(1) #14 -1/0	Y	7	Y	N	Large Hub Opening			
	UFTTH7330TGE ¹	Studs - (1) 600MCM or (2) 350MCM	Top/Bottom	(2) #14-1/0	Y	7	Y	N	Large Hub Opening			
	UFTTH7336TGE	#4-600MCM	Top/Bottom	(2) #14-1/0	Y	7	Y	N	Large Hub Opening			
	UTH7300TFLGE ¹	Studs - (1) 600MCM or (2) 350MCM	Top/Bottom	(1) #14-1/0	Y	7	Y	N	Large Hub Opening	G90 Steel	UL, GP, MEG	
	UTH7330TGE ¹	Studs - (1) 600MCM or (2) 350MCM	Top/Bottom	(1) #14-1/0	Y	7	Y	N	Large Hub Opening	G90 Steel	UL	
UTH7330UFLGE ¹	Studs - (1) 600MCM or (2) 350MCM	Top/Bottom	(1) #14-1/0	Y	7	Y	N	Large Hub Cover Plate	G90 Steel	UL, GP, MEG		
UTH73369THLGE	Line: (1) #4-600MCM Load: (2) #6-350MCM	Top/Bottom	(1) #14-1/0	Y	7	Y	N	Large Hub Opening	G90 Steel	UL		

¹Lugs not included. This product comes with studs only. Order lugs separately, see accessories on page 14. One (1) lug per kit, order appropriate quantity needed. For example, order 3 lugs (A, C, N) if meter is 1-phase or 4 lugs (A, B, C, N) if meter is 3-phase.

Single or Three Phase, 600V, Ringless

Amp	Catalog Number	Wire Range (CU/AL)	Overhead/Underground Line Feed	Ground Range (CU/AL)	Triplex Ground	No. of Terminals	Lever Bypass	Horned Bypass	Hub Type	Enclosure N3R	UL & Utility Approved
200	UAFTH5213BNDGE	#6-350MCM	Top/Bottom	(1) #14-2	Y	5	Y	N	Small Hub Opening	Aluminum	UL, AEP
	UATH5203BFLGE	#6-350MCM	Top/Bottom	(1) #14-2	Y	5	Y	N	Small Hub Opening	Aluminum	UL, MEG
	UATH5203TFLGE	#6-350MCM	Top/Bottom	(1) #14-2	Y	5	Y	N	Large Hub Opening		
	UATH5213CFLGE	#6-350MCM	Top/Bottom	(1) #14-2	Y	5	Y	N	Small Hub Cover Plate		
	UATH5213UFLGE	#6-350MCM	Top/Bottom	(1) #14-2	Y	5	Y	N	Large Hub Cover Plate		
	UFTH5213BNDGE	#6-350MCM	Top/Bottom	(1) #14-2	Y	5	Y	N	Small Hub Opening		
	UTH5203BFLGE	#6-350MCM	Top/Bottom	(1) #14-2	Y	5	Y	N	Small Hub Opening	G90 Steel	UL, MEG
	UTH5203BGE	#6-350MCM	Top/Bottom	(1) #14-2	Y	5	Y	N	Small Hub Opening	G90 Steel	UL, CMP
	UTH5203TFLGE	#8-350MCM	Top/Bottom	(1) #14-2	Y	5	Y	N	Large Hub Opening	G90 Steel	UL, MEG
	UTH5213BNDGE	#6-350MCM	Top/Bottom	(1) #14-2	Y	5	Y	N	Small Hub Opening	G90 Steel	UL
	UTH5213CFLGE	#6-350MCM	Top/Bottom	(1) #14-2	Y	5	Y	N	Small Hub Cover Plate	G90 Steel	UL, MEG
	UTH5213CGE	#6-350MCM	Top/Bottom	(1) #14-2	Y	5	Y	N	Small Hub Cover Plate	G90 Steel	UL, CMP
	UTH5213UFLGE	#6-350MCM	Top/Bottom	(1) #14-2	Y	5	Y	N	Large Hub Cover Plate	G90 Steel	UL, MEG
	UTH5233CGE	#6-350MCM	Top/Bottom	(1) #14-2	Y	5	Y	N	Small Hub Cover Plate	G90 Steel	UL, CMP
	320	UATH5300TFLGE ¹	Studs - (1) 600MCM or (2) 350MCM	Top/Bottom	(1) #14 -1/0	Y	5	Y	N	Large Hub Opening	Aluminum
UATH5330UFLGE ¹		Studs - (1) 600MCM or (2) 350MCM	Top/Bottom	(1) #14 -1/0	Y	5	Y	N	Large Hub Cover Plate		
UTH5300TFLGE ¹		Studs - (1) 600MCM or (2) 350MCM	Top/Bottom	(1) #14-1/0	Y	5	Y	N	Large Hub Opening	G90 Steel	UL, MEG
UTH5330UFLGE ¹		Studs - (1) 600MCM or (2) 350MCM	Top/Bottom	(1) #14-2	Y	5	Y	N	Large Hub Cover Plate		

¹Lugs not included. This product comes with studs only. Order lugs separately, see accessories on page 14. One (1) lug per kit, order appropriate quantity needed. For example, order 3 lugs (A, C, N) if meter is 1-phase or 4 lugs (A, B, C, N) if meter is 3-phase.

Technical Data

Catalog Number	Height (A) Inches	Width (B) Inches	Depth (C) Inches	Gross Weight lbs.	Enclosure Style	Knockout Figure
1004709DGE	14.00	8.00	4.38	13.05	A	P
1004710EGE	14.00	11.00	4.38	13.05	A	Q
1006385BGE	10.88	8.00	3.50	7.00	A	R
1007003CGE	16.50	14.00	3.50	13.05	B	D
1007361CGE	16.50	14.00	3.50	22.00	B	D
1007665AGE	14.00	8.00	4.38	12.00	A	S
1007665GE	14.00	8.00	4.38	10.00	A	S
1007670GE	19.00	13.00	4.94	24.00	A	N
1007672GE	38.25	15.50	6.38	38.00	C	F
1008068GE	34.50	16.44	6.50	39.00	C	G
1008435GE	36.63	15.00	5.69	33.00	D	F
1008801GE	19.00	13.00	4.94	25.00	A	AH
1008836GE	36.63	15.00	6.50	41.00	C	AF
1008837GE	36.63	15.00	6.50	26.00	C	AF
1009260GE	36.63	15.00	5.69	38.00	C	F
1009788AGE	34.50	13.00	4.94	30.42	A	U
1011692GE	19.00	13.00	4.94	25.00	A	N
GEKR1CS1BT	15.00	11.00	4.38	14.00	A	H
GEKS1AS1BTV	10.88	8.00	3.50	7.00	A	I
GEKS1AS1BTZ	10.88	8.00	3.50	7.00	A	W
GEKS1CS1BJTV	14.00	8.00	4.38	11.00	A	J
GEKS1CS1DTV	15.00	11.00	4.38	14.00	A	H
GEKS1DS1ATV	13.00	13.00	4.94	15.00	D	K
U92197CCCPLGE	17.13	13.00	4.94	17.00	E	L
UAFTH4330TSHGE	36.63	15.00	5.69	22.00	C	F
UAFTH4336TSHGE	36.63	15.00	5.69	28.00	C	F
UAFTH5213BNDGE	19.00	13.00	4.94	19.00	A	N
UAFTH7213TSHGE	19.00	13.00	4.94	19.00	A	N
UAFTH7330TSHGE	39.88	20.00	6.50	37.00	C	V
UAFTH7336TSHGE	39.88	20.00	6.50	39.00	C	V
UATH4203BFLGE	19.00	10.50	4.94	18.00	A	Z
UATH4203TFLGE	19.00	10.50	4.94	18.00	A	Z
UATH4213CFLGE	19.00	13.00	4.94	18.00	A	AG
UATH4213UFLGE	19.00	13.00	4.94	18.00	A	AG
UATH4300TFLGE	34.50	13.00	4.94	39.00	F	O
UATH5203BFLGE	19.00	10.50	4.94	17.00	A	Z
UATH5203TFLGE	19.00	10.50	4.94	17.00	A	Z
UATH5213CFLGE	19.00	13.00	4.94	18.00	A	N
UATH5213UFLGE	19.00	13.00	4.94	18.00	A	N
UATH5300TFLGE	34.50	13.00	4.94	18.00	A	O
UATH5330UFLGE	39.88	20.00	6.50	36.00	C	V
UATH7203BFLGE	19.00	10.50	4.94	18.00	A	Z
UATH7203TFLGE	19.00	10.50	4.94	18.00	A	Z
UATH7213CFLGE	19.00	13.00	5.00	18.00	A	O
UATH7213UFLGE	19.00	13.00	5.00	18.00	A	O
UATH7300TFLGE	34.50	15.00	5.69	23.00	F	O

Technical Data (continued)

Catalog Number	Height (A) Inches	Width (B) Inches	Depth (C) Inches	Gross Weight lbs.	Enclosure Style	Knockout Figure
UATH7300UFLGE	39.88	20.00	6.50	36.00	C	O
UATH7330UFLGE	39.88	20.00	6.50	36.00	B	AK
UATRS202BFLGE	14.00	8.00	4.38	11.00	A	AA
UATRS212CFLGE	14.00	11.00	4.38	9.00	A	AB
UATRS213AFLGE	15.00	11.00	4.38	9.00	A	AC
UATRS213CFLGE	15.00	11.00	4.38	9.00	A	AC
UATRS223AFLGE	13.00	13.00	4.38	10.00	D	Y
UATZRS101CFLGE	10.90	8.00	3.50	7.00	A	W
UBC7213BGE	19.00	13.00	4.94	21.00	A	N
UBH7213TGE	19.00	13.00	4.94	24.00	A	N
UBHRS101BGE	10.88	8.00	3.50	7.00	A	W
UBHRS202BGE	14.00	8.00	4.38	11.00	A	M
UBHRS212BGE	14.00	11.00	4.38	13.00	A	W
UFHTRS101BGE	10.88	8.00	3.50	8.00	A	W
UFHTRS202BGE	14.00	8.00	4.38	12.00	A	J
UFHTRS223AGE	13.00	13.00	4.94	16.00	A	J
UFHTRS233CGE	17.13	13.00	4.94	18.00	C	K
UFTH4213CGE	19.00	13.00	4.94	25.00	A	N
UFTH4330TGE	36.63	15.00	5.69	41.00	C	F
UFTH4336TGE	36.63	15.00	5.69	42.00	C	F
UFTH5213BNDGE	19.00	13.00	4.94	26.00	A	N
UFTH7213BGE	19.00	13.00	4.94	26.00	A	N
UFTH7213TGE	19.00	13.00	4.94	26.00	A	N
UFTH7330TGE	39.88	20.00	6.50	65.00	C	V
UFTH7336TGE	39.88	20.00	6.50	42.00	C	V
UFTTH7213TGE	19.00	13.00	4.94	26.00	A	N
UFTTH7330TGE	39.88	20.00	6.50	65.00	C	V
UFTTH7336TGE	39.88	20.00	6.50	67.00	C	V
UGHRS212CKCGE	14.00	11.00	4.38	13.00	A	A
UGHTRS101BGE	10.88	8.00	3.50	7.00	A	W
UGHTRS213BGE	15.00	11.00	4.38	14.00	A	H
UGTH4213CGE	19.00	13.00	4.94	24.00	A	AJ
UGTRS213CGE	15.00	11.00	4.38	14.00	A	H
UH4213CGE	19.00	13.00	4.94	24.00	A	N
UH43068TCPLGE	34.50	13.00	4.94	35.00	F	O
UH7213CGE	19.00	13.00	4.94	23.00	A	AJ
UH7213CKCGE	19.00	13.00	4.94	24.00	A	B
UHTRS101BGE	10.88	8.00	3.50	7.00	A	W
UHTRS202BGE	14.00	8.00	4.38	9.94	A	J
UHTRS223AGE	13.00	13.00	4.94	13.95	D	K
URS101BCPLGE	10.88	8.00	3.50	7.00	A	W
URS101CCPLGE	10.88	8.00	3.50	7.00	A	W
URSTS132CGE	20.00	12.00	4.36	23.00	A	AI
UT92197CCFLGE	17.13	13.00	4.94	18.00	D	AE
UTH4203BFLGE	19.00	10.50	4.94	23.00	A	Z
UTH4203TFLGE	19.00	10.50	4.94	23.00	A	Z

Technical Data (continued)

Catalog Number	Height (A) Inches	Width (B) Inches	Depth (C) Inches	Gross Weight lbs.	Enclosure Style	Knockout Figure
UTH4213BGE	19.00	13.00	4.94	23.00	A	N
UTH4213CFLGE	19.00	13.00	4.94	28.00	A	N
UTH4213UFLGE	19.00	13.00	4.94	28.00	A	N
UTH4300TFLGE	34.50	13.00	4.94	32.00	F	O
UTH4330TGE	36.63	15.00	5.69	39.00	C	F
UTH43369TGE	36.63	15.00	5.69	40.00	C	F
UTH5203BFLGE	19.00	10.50	4.94	23.00	A	Z
UTH5203BGE	19.00	10.50	4.94	23.00	A	Z
UTH5203TFLGE	19.00	10.50	4.94	23.00	A	Z
UTH5213BNDGE	19.00	13.00	4.94	22.00	A	N
UTH5213CFLGE	19.00	13.00	4.94	25.00	A	N
UTH5213CGE	19.00	13.00	4.94	22.00	A	N
UTH5213UFLGE	19.00	13.00	4.94	25.00	A	N
UTH5233CGE	19.00	13.00	4.94	43.00	C	AE
UTH5300TFLGE	34.50	13.00	4.94	32.00	F	O
UTH5330UFLGE	39.88	20.00	6.50	46.00	C	V
UTH7203BFLGE	19.00	10.50	4.94	23.00	A	Z
UTH7203TFLGE	19.00	10.50	4.94	23.00	A	Z
UTH7203TGE	19.00	10.50	4.94	23.00	A	Z
UTH7213BGE	19.00	13.00	4.94	24.00	A	N
UTH7213CGE	19.00	13.00	4.94	25.00	A	N
UTH7213TGE	19.00	13.00	4.94	23.00	A	N
UTH7213THLGE	19.00	13.00	4.94	22.87	A	N
UTH7213UGE	19.00	13.00	4.94	25.00	A	N
UTH7300TFLGE	34.50	15.00	5.69	35.00	F	O
UTH73069THLGE	34.50	15.00	5.69	39.00	A	X
UTH7330TGE	39.88	20.00	6.50	62.00	C	V
UTH7330UFLGE	39.90	20.00	6.50	64.00	C	V
UTH73369THLGE	39.88	20.00	6.50	64.00	C	V
UTRS101BGE	10.88	8.00	3.50	7.00	A	W
UTRS202BGE	14.00	8.00	4.38	9.85	A	J
UTRS212BGE	14.00	11.00	4.38	10.00	A	M
UTRS212CGE	14.00	11.00	4.38	13.00	A	M
UTRS2138BGE	20.00	13.00	4.94	19.00	A	AF
UTRS213AFLGE	15.00	11.00	4.38	14.00	A	AC
UTRS213BGE	15.00	11.00	4.38	12.00	A	H
UTRS213CFLGE	15.00	11.00	4.38	14.00	A	AC
UTRS213CGE	15.00	11.00	4.38	13.00	A	H
UTRS223AFLGE	13.00	13.00	4.94	15.00	D	Y
UTRS223AGE	13.00	13.00	4.94	14.00	D	Y
UTRS502BGE	14.00	8.00	4.38	9.94	A	J
UTZRS101CFLGE	10.88	8.00	3.50	7.00	A	AD

Enclosure Styles

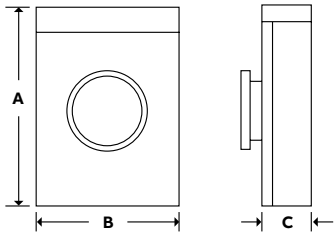


Figure A

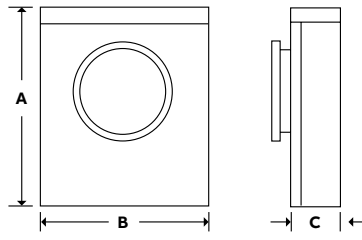


Figure B

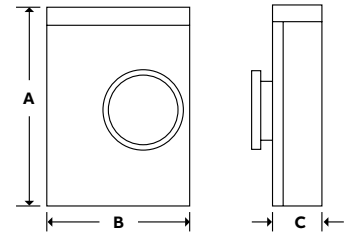


Figure C

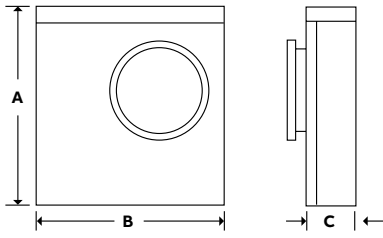


Figure D

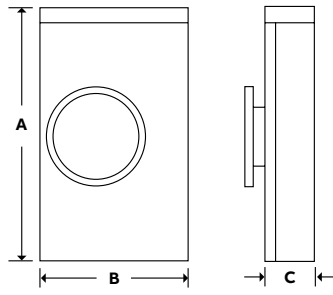


Figure E

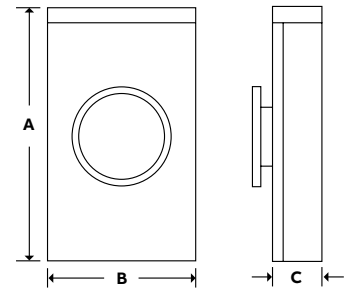


Figure F

Knockout Diagrams

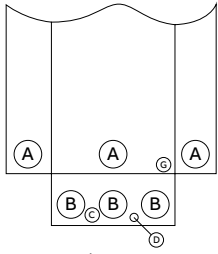


Figure A

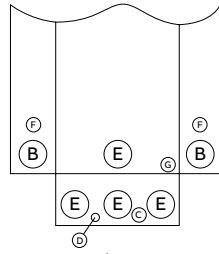


Figure B

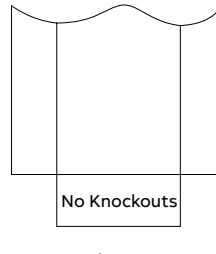


Figure D

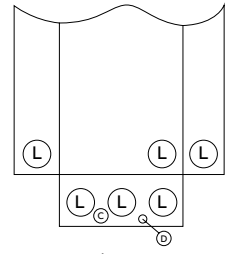


Figure F

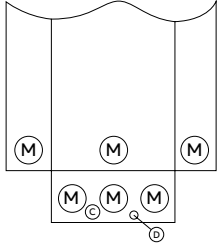


Figure G

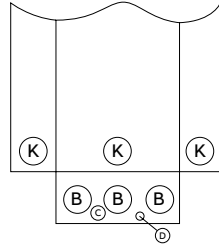


Figure H

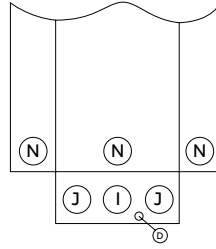


Figure I

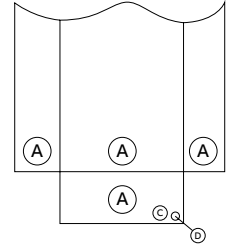


Figure J

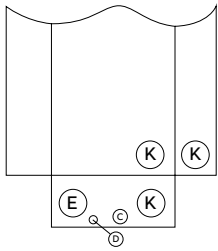


Figure K

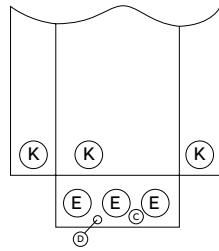


Figure L

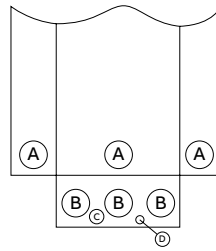


Figure M

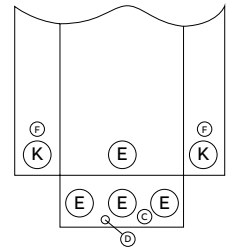


Figure N

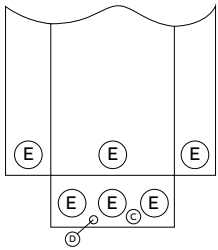


Figure O

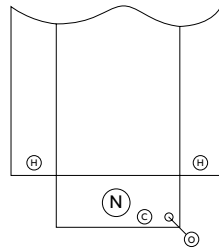


Figure P

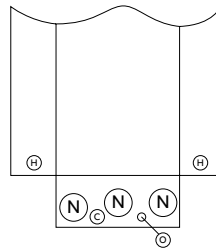


Figure Q

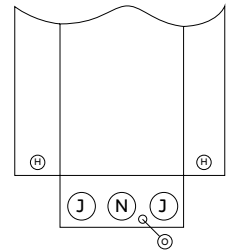


Figure R

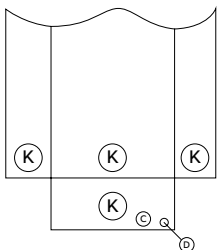


Figure S

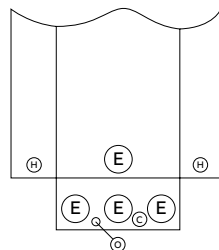


Figure U

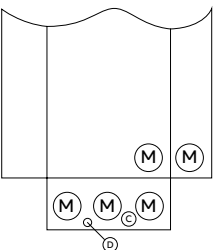


Figure V

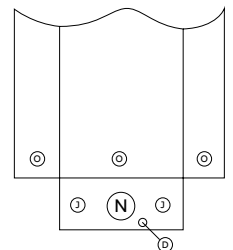


Figure W

Knockout Diagrams (continued)

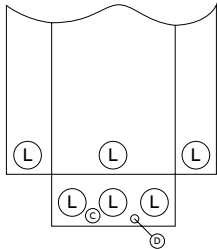


Figure X

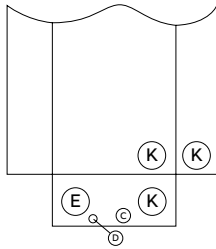


Figure Y

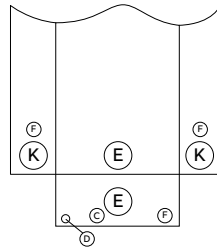


Figure Z

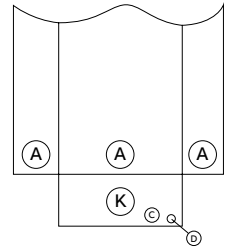


Figure AA

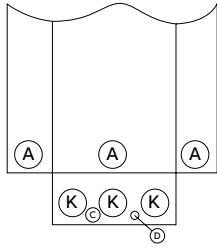


Figure AB

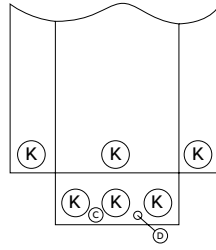


Figure AC

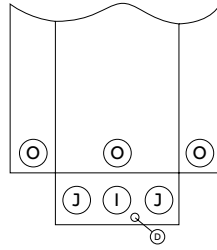


Figure AD

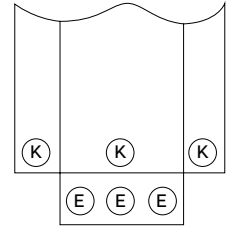


Figure AE

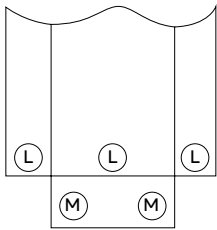


Figure AF

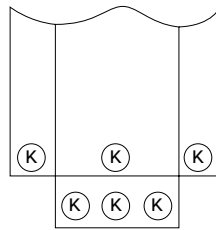


Figure AG

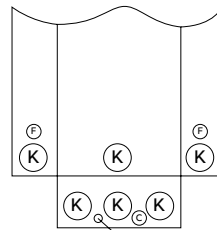


Figure AH

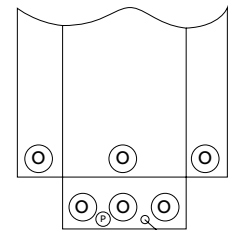


Figure AI

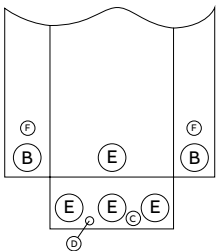


Figure AJ

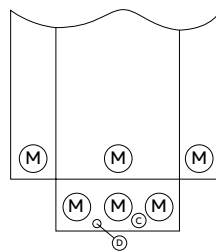


Figure AK

Knockout Dimensions (inches)

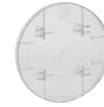
A = 1-1/2, 2, 2-1/2	I = 1-1/4, 1-1/2, 2
B = 1-1/4, 1-1/2, 2, 2-1/2	J = 1/2, 3/4, 1, 1-1/4
C = 1/2	K = 1, 1-1/4, 1-1/2, 2, 2-1/2
D = 5/16	L = 2, 2-1/2, 3, 3-1/2
E = 2, 2-1/2, 3	M = 2, 2-1/2, 3, 3-1/2, 4
F = 1/2, 3/4	N = 1, 1-1/4, 1-1/2, 2
G = 7/16	O = 1/2, 3/4, 1, 1-1/4, 1-1/2
H = 3/4	P = 5/16, 1/2

Accessories

Catalog Number	Description
ARP00326GE	5th Terminal Kit H4330 Parts
ARP00427GE	Connector Kit (2) 350MCM-#6 Lever Bypass
ARP01595GE	HQ Bolt Shield
ARP00984GE	Anti-Inversion Clip (10 per package)
ARP00129GE	GE Connector Kit #4-600MCM
ARP01590GE	DTE Auxillary Service Kit
ARP00035GE	5th Jaw
1006630AGE	Auxillary Contacts Enclosure G90
ARP00920GE	GE Plastic Meter Socket Cover Plate
ARP00118GE	GE Single Socket 600MCM Lug Kit
ARP00429GE	Single Socket 600MCM or (2) 250MCM Lug Kit



ARP00035GE



ARP00920GE

Hub Kits

Catalog Number	Description
ARP00003GE	1" Hub Kit, Small
ARP00004GE	1.25" Hub Kit, Small
ARP00005GE	1.5" Hub Kit, Small
ARP00006GE	2" Hub Kit, Small
ARP00007GE	2.5" Hub Kit, Small
ARP00017GE	2" Hub Kit, Large
ARP00018GE	2.5" Hub Kit, Large
ARP00019GE	3" Hub Kit, Large
ARP00020GE	3.5" Hub Kit, Large
ARP00021GE	4" Hub Kit, Large



Small Hub



Large Hub

Hub Cover Plates

Catalog Number	Description
ARP00002GE	Small Hub Cover Plate for 3-5/16" Hub Openings - Steel
ARP00008GE	Small Hub Cover Plate for 3-5/16" Hub Openings - Aluminum
ARP00016GE	Large Hub Cover Plate for 5" Hub Openings - Steel
ARP00023GE	Large Hub Cover Plate for 5" Hub Openings - Aluminum

