



# Transformer Rated Sockets

## 20 Amp, 6 or 13 Terminals

### FP&L and TECO Approved

- TECO serves Hillsborough county as well as parts of Pasco, Pinellas and Polk counties
- FP&L serves 35 counties in the state of Florida



### Single Phase, 20 Amps, 600V

#### FP&L Approved<sup>1</sup>

Amperage	Catalog Number	End Lug Size (CU/AL)	Side Lug Size (CU/AL)	Overhead/Underground Line Feed	Number of Terminals	Hub Type	Enclosure NEMA 3R	Certification
20	UASTH61C755GE	#14-2	#14-2	Top/Bottom	6	Small Hub Cover Plate	Aluminum	UL, FP&L
	USTH61C756GE	#14-2	#14-2	Top/Bottom	6	Small Hub Cover Plate	Steel	UL, FP&L
	UASTH131B757GE	#14-2	#14-2	Top/Bottom	13	Small Hub Opening	Aluminum	UL, FP&L
	USTH131C758GE	#14-2	#14-2	Top/Bottom	13	Small Hub Cover Plate	Steel	UL, FP&L

<sup>1</sup>Units come with a test switch (not pre-wired) and have a one piece ringless cover.

#### TECO Approved<sup>2</sup>

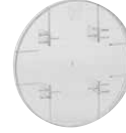
Amperage	Catalog Number	End Lug Size (CU/AL)	Side Lug Size (CU/AL)	Overhead/Underground Line Feed	Number of Terminals	Hub Type	Enclosure NEMA 3R	Certification
20	URSTH62B759GE	#14-2	#14-2	Top/Bottom	6	Small Hub Opening	Steel	UL, TECO
	UARSTH62B760GE	#14-2	#14-2	Top/Bottom	6	Small Hub Opening	Aluminum	UL, TECO
	URSTH132C761GE	#14-2	#14-2	Top/Bottom	13	Small Hub Cover Plate	Steel	UL, TECO
	UARSTH132C762GE	#14-2	#14-2	Top/Bottom	13	Small Hub Cover Plate	Aluminum	UL, TECO

<sup>2</sup>Units are pre-wired with test switch (per TECO specs) and have a two piece ring type cover.

# Transformer Rated Sockets

## Accessories and Hub Kits

Catalog Number	Description
ARP00002GE	Small Bolt-on Hub Cover Plate 3 5/16" X 3 5/16" - Steel
ARP00003GE	1" Hub Kit - Small
ARP00004GE	1.25" Hub Kit - Small
ARP00005GE	1.5" Hub Kit - Small
ARP00006GE	2" Hub Kit - Small
ARP00007GE	2.5" Hub Kit - Small
ARP00008GE	Small Bolt-on Hub Cover Plate 3 5/16" X 3 5/16" - Aluminum
ARP00920GE	Plastic Meter Socket Cover Plate



ARP00920GE



Small Hub

## Technical Data

Catalog Number	Height (inches)	Width (inches)	Depth (inches)	Gross Weight (lbs.)	Standard Pack
UASTH61C755GE	20.00	12.00	4.36	19.00	1
USTH61C756GE	20.00	12.00	4.36	26.00	
UASTH131B757GE	20.00	12.00	4.36	19.00	
USTH131C758GE	20.00	12.00	4.36	27.00	
URSTH62B759GE	20.00	12.00	4.36	23.00	
UARSTH62B760GE	20.00	12.00	4.36	19.00	
URSTH132C761GE	20.00	12.00	4.36	27.00	
UARSTH132C762GE	20.00	12.00	4.36	19.00	

## Knockout Dimensions (Inches)

B = 1/2, 3/4

Q = 1, 1-1/4, 1-1/2

AC = 1/4, 1/2

RX = ø7.750 HUB OP

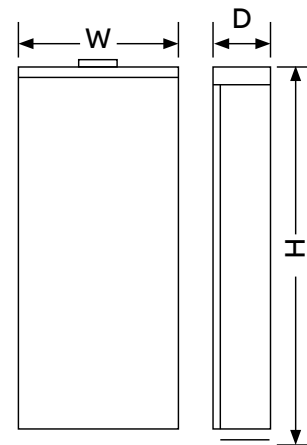
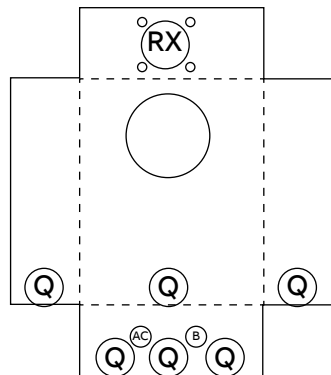


ABB Inc.  
305 Gregson Drive  
Cary, NC 27511

© Copyright 2019 ABB. All rights reserved  
Information provided is subject to change without notice. Please verify all details with ABB. All values are design or typical values when measured under laboratory conditions, and ABB makes no warranty or guarantee, express or implied, that such performance will be obtained under end-use conditions.  
GE is a registered trademark used under license from General Electric company.