

BUYLOG SECTION 1

Load centers, meter combos, single socket metering, and residential circuit breakers

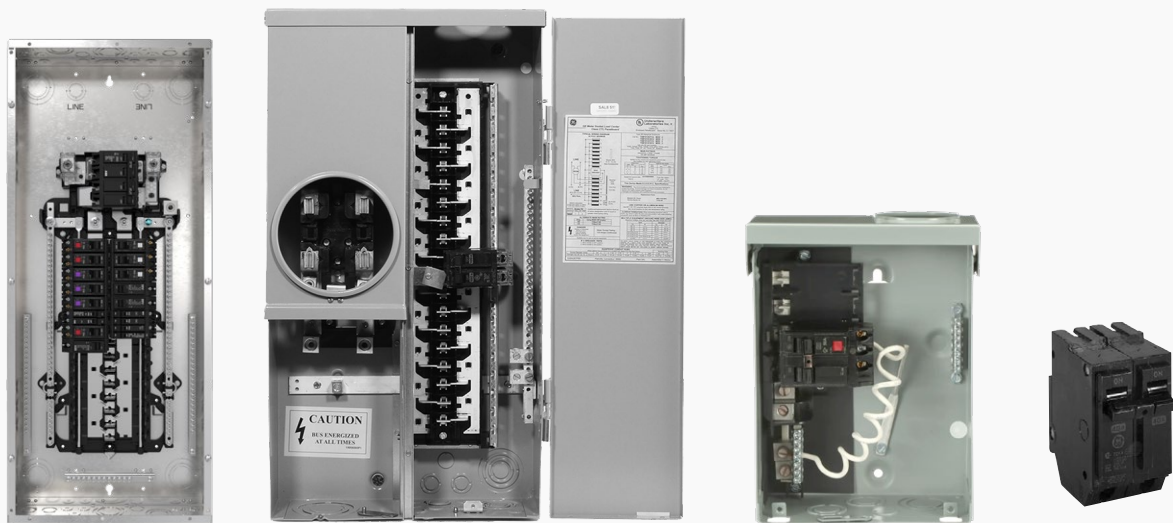
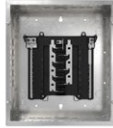


Table of contents

ReliaHome™ overview	1-4
ReliaHome P-Series, P-Series+ load centers	1-6
ReliaHome T-Series load centers	1-12
ReliaHome meter combos	1-16
ReliaHome three phase load centers	1-28
ReliaHome generator panels	1-33
ReliaHome riser panels	1-35
ReliaHome pool and spa panels	1-37
ReliaHome circuit breakers	1-39
ReliaHome circuit breaker accessories	1-46
ReliaHome surge protectors	1-49
ReliaHome enclosed circuit breakers	1-51
ReliaHome field installed accessories	1-53
Knockout diagrams	1-61
Wiring diagrams	1-66
ReliaHome smart panel	1-72
ReliaHome single socket metering	1-76

Overview



Brand name		ReliaHome T-Series	ReliaHome P-Series	ReliaHome P-Series+
Application				
Phase, wires		Single phase, 3-wire	Single phase, 3-wire	Single phase, 3-wire
Voltage		120/240 V AC	120/240 V AC	120/240 V AC
Circuit count, single pole 1" spaces		Up to 14	Up to 60	Up to 60
Mains type	Main lug	■	■	■
	Main lug convertible	■	Outdoor, NEMA 3R only	■
	Main breaker	■	■	■
Amperage		Up to 200 A	Up to 225 A	Up to 225 A
Enclosure rating	Indoor NEMA 1	■	■	■
	Outdoor NEMA 3R	■	■	■
Certification		UL67	UL67	UL67
Starting page		1-12	1-6	1-10

Circuit breakers and accessories

Circuit breakers

Q-line plug-in circuit breakers, UL489	Standard thermal magnetic	■	■	■
	Plug-on neutral	■		
	Short pigtail electronic	■	■	
	Long pigtail electronic	■	■	■
Arc Fault Circuit Interrupter (AFCI), UL1699		■	■	■
Dual function (DFCI/AFCI) ground fault & combination arc fault circuit breaker		■	■	■
Ground Fault with self-test feature circuit breaker, UL943 ed5 (5ma)		■	■	■
Ground fault with equipment protection, UL 943 (30 ma)		■	■	■
Switching neutral circuit breakers		■	■	■
"HID" Lighting circuit breakers		■	■	■
High magnetic circuit breakers		■	■	■
Molded case switches		■	■	■
THQL circuit breakers with factory installed shunt trip		■	■	■
THQL circuit breakers, internal common trip with factory installed shunt trip		■	■	■

Circuit breaker accessories

Main circuit breaker kits	■	■	
Main breaker retainer kits	■	■	■
Handle lock - padlocking	■	■	■
Handle lock - non-padlocking	■	■	■
Handle ties	■	■	■

Load center field accessories

Auxiliary gutter enclosures	■	■	
Gutter tap kits	■	■	
Equipment ground	■	■	■
Neutral kits	■	■	■
Isolated ground bus bars equipment ground kit	■	■	■
Sub-feed, feed through, and main lug kits	■	■	■
Door lock	■	■	■
Circuit directory	■	■	■
Touch-up paint	■	■	■
Front filler plates	■	■	■
Universal raintight hubs	■	■	■
Door handle	■	■	■
Cross arm		■	
Service barrier kits	■	■	■
Load center hardware kits	■	■	■
Generator interlock kit	■	■	
Meter combos flange kits			
Surge protectors	■	■	■

NOTE: Options and accessories shown are not available for all products. Reference BuyLog pages for details.



Brand name	ReliaHome riser panels	ReliaHome Pool & Spa Panel	ReliaHome Generator Panel	ReliaHome 3-Phase load center
Application	High-rise buildings	Pool, spa, outdoor area	Back-up power	Light commercial
Phase, wires	Single phase, 3-wire	Single phase, 3-wire	Single phase, 3-wire	Three phase, 4-wire
Voltage	120/240 V AC	120/240 V AC	120/240 V AC	208Y/120 V AC
Circuit count, single pole 1" spaces	Up to 30	Up to 4	Up to 8	Up to 42
Mains type	Main lug	■		■
	Main lug convertible	■		
	Main breaker		■	■
Amperage	Up to 200 A	Up to 60 A	30A and 60A options	Up to 225A
Factory installed circuit breaker(s)		2-pole ground fault circuit breaker	Two inter-locked main circuit breakers	SACE Formula A2 factory-installed main circuit breakers
Enclosure rating	Indoor NEMA 1	■	■	■
	Outdoor NEMA 3R		■	■
Certification	UL67	UL67	UL67 art. 702 NEC, ANSI/NFPA 70	UL67
Starting page	1-35	1-37	1-33	1-28

Circuit breakers and accessories

Circuit breakers

Q-line plug-in circuit breakers, UL489	Standard thermal magnetic	■	■	■	■
	Short pigtail electronic	■		■	
	Long pigtail electronic	■	■	■	■
Arc Fault Circuit Interrupter (AFCI), UL1699		■	■	■	■
Dual function (DFCI/AFCI) ground fault & combination arc fault circuit breaker		■	■	■	■
Ground Fault with self-test feature circuit breaker, UL943 ed5 (5ma)		■	■	■	■
Ground fault with equipment protection, UL 943 (30 ma)		■	■	■	■
Switching neutral circuit breakers		■	■	■	■
"HID" Lighting circuit breakers		■	■	■	■
High magnetic circuit breakers		■	■	■	■
Molded case switches		■	■	■	■
THQL circuit breakers with factory installed shunt trip		■	■	■	■
THQL circuit breakers, internal common trip with factory installed shunt trip		■	■	■	■

Circuit breaker accessories

Interlocking circuit breakers			■		
Main circuit breaker kits	■				
Main breaker retainer kits	■				
Handle lock - padlocking	■		■	■	■
Handle lock - non-padlocking	■		■	■	■
Handle ties	■		■	■	■

Load center field accessories

Gutter tap kits	■				
Equipment ground	■		■	■	■
Neutral kits	■		■	■	■
Isolated ground bus bars equipment ground kit	■		■	■	■
Sub-feed, feed through, and main lug kits	■		■	■	■
Door lock	■		■	■	■
Circuit directory	■		■	■	■
Touch-up paint	■		■	■	■
Front filler plates	■		■	■	■
Universal raintight hubs			■	■	■
Door handle	■		■	■	■
Cross arm	■				
Service barrier kits	■				■
Load center hardware kits	■		■	■	■
Surge protectors	■		■	■	■

NOTE: Options and accessories shown are not available for all products. Reference BuyLog pages for details.

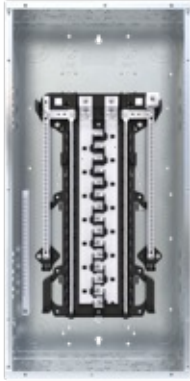
ReliaHome P-Series load centers

Table of contents

ReliaHome P-Series load centers	
Product overview	1-7
Ordering code construction	1-7
P-Series main breaker indoor (NEMA 1) enclosure	1-8
P-Series main breaker outdoor (NEMA 3) enclosure	1-8
P-Series main lug factory installed indoor (NEMA 1) enclosure	1-9
P-Series main lug factory installed outdoor (NEMA 3) enclosure	1-9
P-Series+ main breaker indoor (NEMA 1) enclosure	1-10
P-Series+ main breaker outdoor (NEMA 3) enclosure	1-10
P-Series+ main lug factory installed indoor (NEMA 1) enclosure	1-11
P-Series+ main lug factory installed outdoor (NEMA 3) enclosure	1-11

ReliaHome load centers

Standard P-Series and Premium P-Series+ product overview



With advanced plug-on neutral electronic circuit breakers that attach to the neutral bus using ABB's unique ReliaLock™ connection feature and round plug-on neutral bars, ReliaHome P-Series and P-Series+'s features enable you to perform faster and more efficient circuit breaker installations.

Features

- UL listed (Panelboards No. 67)
- Single-phase, three-wire, 120/240 V AC
- 60°C/75°C conductor rating
- Suitable for use as Service Entrance Equipment when installed in accordance with National Electrical Code
- 22kAIC RMS symmetrical, except where noted

ReliaHome P-Series

- Available with gray or white fronts for indoor
- Plug-on neutral
- Galvanized enclosures
- Integrated circuit breaker mounting rails
- One-tool installation
- Backed out neutral screws
- Factory installed bonding screw—convertible (outdoor NEMA 3R only)
- Field extendable neutral bars
- First set of twist outs removed
- 2-year limited warranty
- Aluminum bus

ReliaHome P-Series+

- Available with gray or white fronts for indoor
- Plug-on neutral
- Galvanized enclosures
- Integrated circuit breaker mounting rails
- One-tool installation
- Backed out neutral screws
- Factory installed bonding screw—convertible (outdoor NEMA 3R only)
- Field extendable neutral bars
- First set of twist outs removed
- 10-year limited warranty
- Copper bus

Ordering code construction



ABB identification

PA =	ReliaHome P-Series
PC =	ReliaHome P-Series+
PFA =	ReliaHome P-Series replacement front
PFC =	ReliaHome P-Series+ replacement front

Type of main

M =	Main circuit breaker
L =	Main lug
C =	Main lug convertible

Maximum spaces/circuits

08 =	8-1" spaces, 16 circuits
12 =	12-1" spaces, 24 circuits
16 =	16-1" spaces, 32 circuits
20 =	20-1" spaces, 40 circuits
24 =	24-1" spaces, 48 circuits
30 =	30-1" spaces, 60 circuits
40 =	40-1" spaces, 80 circuits
60 =	60-1" spaces, 120 circuits

Specials

Blank =	No special suffix
FL =	Feed-through lugs
M =	Riser panel

Trim type/color, enclosure type

Blank =	Combination surface/flush trim, gray, NEMA 1
W =	Combination surface/flush trim, white, NEMA 1
R =	Surface trim, gray, NEMA 3R

Main ampere rating

10 =	100 amperes
12 =	125 amperes
15 =	150 amperes
20 =	200 amperes
22 =	225 amperes

ReliaHome P-Series load centers

P-Series main circuit breaker, NEMA 1 indoor

Main ampere rating	1 pole, 1" spaces	Max single pole circuits	Front type	Replacement front ordering code ²	Main wire size (AWG/kcmil) Cu-Al	Equipment ground kit	Ordering code ¹
100	16	32	Combination	PFAM1610	#4 - 1/0	TGK12/TGK24 (order separately)	PAM1610
	20	40	Combination	PFAM2010	#4 - 1/0	TGK12/TGK24 (order separately)	PAM2010
	30	60	Combination	PFAM3010	#4 - 1/0	TGK12/TGK24/TGK32 (order separately)	PAM3010
125	24	48	Combination	PFAM2412	#2 - 2/0	TGK12/TGK24 (order separately)	PAM2412
	30	60	Combination	PFAM3012	#2 - 2/0	TGK12/TGK24/TGK32 (order separately)	PAM3012
150	16	32	Combination	PFAM1615	#1 - 3/0 Cu; 2/0 - 3/0 Al	TGK12/TGK24 (order separately)	PAM1615
	20	40	Combination	PFAM2015	#1 - 3/0 Cu; 2/0 - 3/0 Al	TGK12/TGK24 (order separately)	PAM2015
	30	60	Combination	PFAM3015	#1 - 3/0 Cu; 2/0 - 3/0 Al	TGK12/TGK24/TGK32 (order separately)	PAM3015
	40	80	Combination	PFAM4015	#1 - 3/0 Cu; 2/0 - 3/0 Al	TGK12/TGK42 (order separately)	PAM4015
200	20	40	Combination	PFAM2020	#1 - 250 Cu; 2/0 - 250 Al	TGK12/TGK24 (order separately)	PAM2020
	30	60	Combination	PFAM3020	#1 - 250 Cu; 2/0 - 250 Al	TGK12/TGK24/TGK32 (order separately)	PAM3020
	40	80	Combination	PFAM4020	#1 - 250 Cu; 2/0 - 250 Al	TGK12/TGK42 (order separately)	PAM4020
	60	120	Combination	PFAM6020	#1 - 250 Cu; 2/0 - 250 Al	TGK12/TGK32 (order separately)	PAM6020
225	40	80	Combination	PFAM4022	#1 - 300 Cu; 2/0 - 300 Al	TGK12/TGK42 (order separately)	PAM4022

P-Series main circuit breaker, NEMA 1 indoor white

Main ampere rating	1 pole, 1" spaces	Max single pole circuits	Front type	Replacement front ordering code ²	Main wire size (AWG/kcmil) Cu-Al	Equipment ground kit	Ordering code ¹
100	16	32	Combination	PFAM1610W	#4 - 1/0	TGK12/TGK24 (order separately)	PAM1610W
	20	40	Combination	PFAM2010W	#4 - 1/0	TGK12/TGK24 (order separately)	PAM2010W
	30	60	Combination	PFAM3010W	#4 - 1/0	TGK12/TGK24/TGK32 (order separately)	PAM3010W
125	24	48	Combination	PFAM2412W	#2 - 2/0	TGK12/TGK24 (order separately)	PAM2412W
	30	60	Combination	PFAM3012W	#2 - 2/0	TGK12/TGK24/TGK32 (order separately)	PAM3012W
150	16	32	Combination	PFAM1615W	#1 - 3/0 Cu; 2/0 - 3/0 Al	TGK12/TGK24 (order separately)	PAM1615W
	20	40	Combination	PFAM2015W	#1 - 3/0 Cu; 2/0 - 3/0 Al	TGK12/TGK24 (order separately)	PAM2015W
	30	60	Combination	PFAM3015W	#1 - 3/0 Cu; 2/0 - 3/0 Al	TGK12/TGK24/TGK32 (order separately)	PAM3015W
	40	80	Combination	PFAM4015W	#1 - 3/0 Cu; 2/0 - 3/0 Al	TGK12/TGK42 (order separately)	PAM4015W
200	20	40	Combination	PFAM2020W	#1 - 250 Cu; 2/0 - 250 Al	TGK12/TGK24 (order separately)	PAM2020W
	30	60	Combination	PFAM3020W	#1 - 250 Cu; 2/0 - 250 Al	TGK12/TGK24/TGK32 (order separately)	PAM3020W
	40	80	Combination	PFAM4020W	#1 - 250 Cu; 2/0 - 250 Al	TGK12/TGK42 (order separately)	PAM4020W
	60	120	Combination	PFAM6020W	#1 - 250 Cu; 2/0 - 250 Al	TGK12/TGK32 (order separately)	PAM6020W
225	40	80	Combination	PFAM4022W	#1 - 300 Cu; 2/0 - 300 Al	TGK12/TGK42 (order separately)	PAM4022W

P-Series main circuit breaker, NEMA 3R outdoor

Main ampere rating	1 pole, 1" spaces	Max single pole circuits	Front type	Replacement front ordering code ²	Main wire size (AWG/kcmil) Cu-Al	Equipment ground kit	Ordering code ¹
100	16	32	-	PFAM1610R	#4 - 1/0	TGK12 (order separately)	PAM1610R
	20	40	-	PFAM2010R	#4 - 1/0	TGK12/TGK24 (order separately)	PAM2010R
125	20	40	-	PFAM2012R	#2 - 2/0 Cu-Al	TGK12/TGK24 (order separately)	PAM2012R
	24	48	-	PFAM2412R	#2 - 2/0 Cu-Al	TGK12/TGK24 (order separately)	PAM2412R
	30	60	-	PFAM3012R	#2 - 2/0 Cu-Al	TGK12/TGK24 (order separately)	PAM3012R
150	08	16	-	PFAM0815RFL	#1 - 3/0 Cu; 2/0 - 3/0 Al	TGK12 (order separately)	PAM0815RFL ³
	20	40	-	PFAM2015R	#1 - 3/0 Cu; 2/0 - 3/0 Al	TGK12/TGK24 (order separately)	PAM2015R
	30	60	-	PFAM3015R	#1 - 3/0 Cu; 2/0 - 3/0 Al	TGK12/TGK24 (order separately)	PAM3015R
200	08	16	-	PFAM0820RFL	#1 - 250 Cu; 2/0 - 250 Al	TGK12 (order separately)	PAM0820RFL ³
	20	40	-	PFAM2020R	#1 - 250 Cu; 2/0 - 250 Al	TGK12/TGK24 (order separately)	PAM2020R
	30	60	-	PFAM3020R	#1 - 250 Cu; 2/0 - 250 Al	TGK12/TGK24/TGK32 (order separately)	PAM3020R
	40	80	-	PFAM4020R	#1 - 250 Cu; 2/0 - 250 Al	TGK12/TGK42 (order separately)	PAM4020R
	60	120	-	PFAM6020R	#1 - 250 Cu; 2/0 - 250 Al	TGK12/TGK32 (order separately)	PAM6020R

¹If a larger than #4 Al/Cu ground wire is needed please order ground lug kit: TNLK20. This is a single add-a-lug- that accommodates a #6-2/0 Al/Cu ground wire.

²All ABB ReliaHome load centers come with the front included in the box. A replacement front is only needed if one is damaged or lost.

³These outdoor main breaker load centers come with factory installed feed through lugs.

NOTE: Circuit breakers must be ordered separately. [Click here.](#)

ReliaHome P-Series load centers

P-Series main lug, NEMA 1 indoor

Main ampere rating	1 pole, 1" spaces	Max single pole circuits	Front type	Replacement front ordering code ¹	Main wire size (AWG/kcmil) Cu-Al	Equipment ground kit	Ordering code
125	16	32	Combination	PFAL1612	#6 - 2/0	Factory installed TGK12 & TNLK20. Order additional TGK12 or TGK24 separately if needed.	PAL1612
	20	40	Combination	PFAL2012	#6 - 2/0	Factory installed TGK24 & TNLK20. Order additional TGK12 or TGK24 separately if needed.	PAL2012
	24	48	Combination	PFAL2412	#6 - 2/0	Factory installed TGK24 & TNLK20. Order additional TGK12 or TGK24 separately if needed.	PAL2412
	30	60	Combination	PFAL3012	#6 - 2/0	Factory installed TGK24 & TNLK20. Order additional TGK12, TGK24, or TGK32 separately if needed.	PAL3012
150	16	32	Combination	PFAL1615	#6 - 250	Factory installed TGK12 & TNLK20. Order additional TGK12 or TGK24 separately if needed.	PAL1615
	20	40	Combination	PFAL2015	#6 - 250	Factory installed TGK24 & TNLK20. Order additional TGK12 or TGK24 separately if needed.	PAL2015
200	20	40	Combination	PFAL2020	#6 - 250	Factory installed TGK24 & TNLK20. Order additional TGK12 or TGK24 separately if needed.	PAL2020
	30	60	Combination	PFAL3020	#6 - 250	Factory installed TGK24 & TNLK20. Order additional TGK12, TGK24, or TGK32 separately if needed.	PAL3020
	40	80	Combination	PFAL4020	#6 - 250	Factory installed TGK42 & TNLK20. Order additional TGK12 or TGK42 separately if needed.	PAL4020
225	40	80	Combination	PFAL4022	#1 - 300	Factory installed TGK42 & TNLK20. Order additional TGK12 or TGK42 separately if needed.	PAL4022

P-Series main lug, NEMA 1 indoor white

Main ampere rating	1 pole, 1" spaces	Max single pole circuits	Front type	Replacement front ordering code ¹	Main wire size (AWG/kcmil) Cu-Al	Equipment ground kit	Ordering code
125	16	32	Combination	PFAL1612W	#6 - 2/0	Factory installed TGK12 & TNLK20. Order additional TGK12 or TGK24 separately if needed.	PAL1612W
	20	40	Combination	PFAL2012W	#6 - 2/0	Factory installed TGK24 & TNLK20. Order additional TGK12 or TGK24 separately if needed.	PAL2012W
	24	48	Combination	PFAL2412W	#6 - 2/0	Factory installed TGK24 & TNLK20. Order additional TGK12 or TGK24 separately if needed.	PAL2412W
	30	60	Combination	PFAL3012W	#6 - 2/0	Factory installed TGK24 & TNLK20. Order additional TGK12, TGK24, or TGK32 separately if needed.	PAL3012W
150	16	32	Combination	PFAL1615W	#6 - 250	Factory installed TGK12 & TNLK20. Order additional TGK12 or TGK24 separately if needed.	PAL1615W
	20	40	Combination	PFAL2015W	#6 - 250	Factory installed TGK24 & TNLK20. Order additional TGK12 or TGK24 separately if needed.	PAL2015W
200	20	40	Combination	PFAL2020W	#6 - 250	Factory installed TGK24 & TNLK20. Order additional TGK12 or TGK24 separately if needed.	PAL2020W
	30	60	Combination	PFAL3020W	#6 - 250	Factory installed TGK24 & TNLK20. Order additional TGK12, TGK24, or TGK32 separately if needed.	PAL3020W
	40	80	Combination	PFAL4020W	#6 - 250	Factory installed TGK42 & TNLK20. Order additional TGK12 or TGK42 separately if needed.	PAL4020W
225	40	80	Combination	PFAL4022W	#1 - 300	Factory installed TGK42 & TNLK20. Order additional TGK12 or TGK42 separately if needed.	PAL4022W

P-Series main lug / main lug convertible to main circuit breaker, Outdoor NEMA 3R main lug convertible

Main ampere rating	1 pole, 1" spaces	Max single pole circuits	Front type	Replacement front ordering code ¹	Main wire size (AWG/kcmil) Cu-Al	Equipment ground kit	Ordering code ²
125	16	32	-	PFAC1612R	#6 - 2/0	Factory installed TGK12 & TNLK20. Order additional TGK12 separately if needed.	PAC1612R
	20	40	-	PFAC2012R	#6 - 2/0	Factory installed TGK24 & TNLK20. Order additional TGK12 or TGK24 separately if needed.	PAC2012R
	24	48	-	PFAC2412R	#6 - 2/0	Factory installed TGK24 & TNLK20. Order additional TGK12 or TGK24 separately if needed.	PAC2412R
200	20	40	-	PFAC2020R	#6 - 250	Factory installed TGK24 & TNLK20. Order additional TGK12 or TGK24 separately if needed.	PAC2020R
	30	60	-	PFAC3020R	#6 - 250	Factory installed TGK24 & TNLK20. Order additional TGK12 or TGK24 separately if needed.	PAC3020R
	40	80	-	PFAC4020R	#6 - 250	Factory installed TGK42 & TNLK20. Order additional TGK12 or TGK42 separately if needed.	PAC4020R

¹All ABB ReliaHome load centers come with the front included in the box. A replacement front is only needed if one is damaged or lost.

²For main breaker conversion utilize THQMVXXXF for 150A-225A MLO load centers and THQMXXXF for 125A MLO load centers. Please see main circuit breaker section of the Buylog for more details.

NOTE: Circuit breakers must be ordered separately. [Click here.](#)

ReliaHome P-Series+ load centers

P-Series+ main circuit breaker, NEMA 1 indoor

Main ampere rating	1 pole, 1" spaces	Max single pole circuits	Front type	Replacement front ordering code ²	Main wire size (AWG/kcmil) Cu-Al	Equipment ground kit	Ordering code ¹
100	16	32	Combination	PFCM1610	#4 – 1/0	TGK12/TGK24 (order separately)	PCM1610
	20	40	Combination	PFCM2010	#4 – 1/0	TGK12/TGK24 (order separately)	PCM2010
	30	60	Combination	PFCM3010	#4 – 1/0	TGK12/TGK24/TGK32 (order separately)	PCM3010
125	24	48	Combination	PFCM2412	#2 – 2/0	TGK12/TGK24 (order separately)	PCM2412
	30	60	Combination	PFCM3012	#2 – 2/0	TGK12/TGK24/TGK32 (order separately)	PCM3012
150	16	32	Combination	PFCM1615	#1 – 3/0 Cu; 2/0 – 3/0 Al	TGK12/TGK24 (order separately)	PCM1615
	20	40	Combination	PFCM2015	#1 – 3/0 Cu; 2/0 – 3/0 Al	TGK12/TGK24 (order separately)	PCM2015
	30	60	Combination	PFCM3015	#1 – 3/0 Cu; 2/0 – 3/0 Al	TGK12/TGK24/TGK32 (order separately)	PCM3015
	40	80	Combination	PFCM4015	#1 – 3/0 Cu; 2/0 – 3/0 Al	TGK12/TGK42 (order separately)	PCM4015
200	20	40	Combination	PFCM2020	#1 – 250 Cu; 2/0 – 250 Al	TGK12/TGK24 (order separately)	PCM2020
	30	60	Combination	PFCM3020	#1 – 250 Cu; 2/0 – 250 Al	TGK12/TGK24/TGK32 (order separately)	PCM3020
	40	80	Combination	PFCM4020	#1 – 250 Cu; 2/0 – 250 Al	TGK12/TGK42 (order separately)	PCM4020
225	40	80	Combination	PFCM4022	#1 – 300 Cu; 2/0 – 300 Al	TGK12/TGK42 (order separately)	PCM4022
	60	120	Combination	PFCM6022	#1 – 300 Cu; 2/0 – 300 Al	TGK12/TGK32 (order separately)	PCM6022

P-Series+ main circuit breaker, NEMA 1 indoor white

Main ampere rating	1 pole, 1" spaces	Max single pole circuits	Front type	Replacement front ordering code ²	Main wire size (AWG/kcmil) Cu-Al	Equipment ground kit	Ordering code ¹
100	16	32	Combination	PFCM1610W	#4 – 1/0	TGK12/TGK24 (order separately)	PCM1610W
	20	40	Combination	PFCM2010W	#4 – 1/0	TGK12/TGK24 (order separately)	PCM2010W
	30	60	Combination	PFCM3010W	#4 – 1/0	TGK12/TGK24/TGK32 (order separately)	PCM3010W
125	24	48	Combination	PFCM2412W	#2 – 2/0	TGK12/TGK24 (order separately)	PCM2412W
	30	60	Combination	PFCM3012W	#2 – 2/0	TGK12/TGK24/TGK32 (order separately)	PCM3012W
150	16	32	Combination	PFCM1615W	#1 – 3/0 Cu; 2/0 – 3/0 Al	TGK12/TGK24 (order separately)	PCM1615W
	20	40	Combination	PFCM2015W	#1 – 3/0 Cu; 2/0 – 3/0 Al	TGK12/TGK24 (order separately)	PCM2015W
	30	60	Combination	PFCM3015W	#1 – 3/0 Cu; 2/0 – 3/0 Al	TGK12/TGK24/TGK32 (order separately)	PCM3015W
	40	80	Combination	PFCM4015W	#1 – 3/0 Cu; 2/0 – 3/0 Al	TGK12/TGK42 (order separately)	PCM4015W
200	20	40	Combination	PFCM2020W	#1 – 250 Cu; 2/0 – 250 Al	TGK12/TGK24 (order separately)	PCM2020W
	30	60	Combination	PFCM3020W	#1 – 250 Cu; 2/0 – 250 Al	TGK12/TGK24/TGK32 (order separately)	PCM3020W
	40	80	Combination	PFCM4020W	#1 – 250 Cu; 2/0 – 250 Al	TGK12/TGK42 (order separately)	PCM4020W
225	40	80	Combination	PFCM4022W	#1 – 300 Cu; 2/0 – 300 Al	TGK12/TGK42 (order separately)	PCM4022W
	60	120	Combination	PFCM6022W	#1 – 300 Cu; 2/0 – 300 Al	TGK12/TGK32 (order separately)	PCM6022W

P-Series+ main circuit breaker, NEMA 3R outdoor

Main ampere rating	1 pole, 1" spaces	Max single pole circuits	Front type	Replacement front ordering code ²	Main wire size (AWG/kcmil) Cu-Al	Equipment ground kit	Ordering code ¹
100	16	32	–	PFCM1610R	#4 – 1/0	TGK12 (order separately)	PCM1610R
	20	40	–	PFCM2010R	#4 – 1/0	TGK12/TGK24 (order separately)	PCM2010R
125	20	40	–	PFCM2012R	#2 – 2/0 Cu-Al	TGK12/TGK24 (order separately)	PCM2012R
	24	48	–	PFCM2412R	#2 – 2/0 Cu-Al	TGK12/TGK24 (order separately)	PCM2412R
	30	60	–	PFCM3012R	#2 – 2/0 Cu-Al	TGK12/TGK24 (order separately)	PCM3012R
150	08	16	–	PFCM0815RFL	#1 – 3/0 Cu; 2/0 – 3/0 Al	TGK12 (order separately)	PCM0815RFL ³
	20	40	–	PFCM2015R	#1 – 3/0 Cu; 2/0 – 3/0 Al	TGK12/TGK24 (order separately)	PCM2015R
	30	60	–	PFCM3015R	#1 – 3/0 Cu; 2/0 – 3/0 Al	TGK12/TGK24 (order separately)	PCM3015R
200	08	16	–	PFCM0820RFL	#1 – 250 Cu; 2/0 – 250 Al	TGK12 (order separately)	PCM0820RFL ³
	40	80	–	PFCM4020R	#1 – 250 Cu; 2/0 – 250 Al	TGK12/TGK24 (order separately)	PCM4020R

¹If a larger than #4 Al/Cu ground wire is needed please order ground lug kit: TNLK20. This is a single add-a-lug- that accommodates a #6-2/0 Al/Cu ground wire.

²All ABB ReliaHome load centers come with the front included in the box. A replacement front is only needed if one is damaged or lost.

³These outdoor main breaker load centers come with factory installed feed through lugs.

ReliaHome P-Series+ load centers

P-Series+ main lug convertible to main circuit breaker, NEMA 1 indoor

Main ampere rating	1 pole, 1" spaces	Max single pole circuits	Front type	Replacement front ordering code ¹	Main wire size (AWG/kcmil) Cu-Al	Equipment ground kit	Ordering code ²
125	16	32	Combination	PFCC1612	#6 – 2/0	Factory installed TGK12 & TNLK20. Order additional TGK12 or TGK24 separately if needed.	PCC1612
	20	40	Combination	PFCC2012	#6 – 2/0	Factory installed TGK24 & TNLK20. Order additional TGK12 or TGK24 separately if needed.	PCC2012
	24	48	Combination	PFCC2412	#6 – 2/0	Factory installed TGK24 & TNLK20. Order additional TGK12 or TGK24 separately if needed.	PCC2412
	30	60	Combination	PFCC3012	#6 – 2/0	Factory installed TGK24 & TNLK20. Order additional TGK12, TGK24, or TGK32 separately if needed.	PCC3012
150	16	32	Combination	PFCC1615	#6 – 250	Factory installed TGK12 & TNLK20. Order additional TGK12 or TGK24 separately if needed.	PCC1615
	20	40	Combination	PFCC2015	#6 – 250	Factory installed TGK24 & TNLK20. Order additional TGK12 or TGK24 separately if needed.	PCC2015
200	20	40	Combination	PFCC2020	#6 – 250	Factory installed TGK24 & TNLK20. Order additional TGK12 or TGK24 separately if needed.	PCC2020
	30	60	Combination	PFCC3020	#6 – 250	Factory installed TGK24 & TNLK20. Order additional TGK12, TGK24, or TGK32 separately if needed.	PCC3020
	40	80	Combination	PFCC4020	#6 – 250	Factory installed TGK42 & TNLK20. Order additional TGK12 or TGK42 separately if needed.	PCC4020
225	40	80	Combination	PFCC4022	#1 – 300	Factory installed TGK42 & TNLK20. Order additional TGK12 or TGK42 separately if needed.	PCC4022

P-Series+ main lug convertible to main circuit breaker, NEMA 1 indoor white

Main ampere rating	1 pole, 1" spaces	Max single pole circuits	Front type	Replacement front ordering code ¹	Main wire size (AWG/kcmil) Cu-Al	Equipment ground kit	Ordering code ²
125	16	32	Combination	PFCC1612W	#6 – 2/0	Factory installed TGK12 & TNLK20. Order additional TGK12 or TGK24 separately if needed.	PCC1612W
	20	40	Combination	PFCC2012W	#6 – 2/0	Factory installed TGK24 & TNLK20. Order additional TGK12 or TGK24 separately if needed.	PCC2012W
	24	48	Combination	PFCC2412W	#6 – 2/0	Factory installed TGK24 & TNLK20. Order additional TGK12 or TGK24 separately if needed.	PCC2412W
	30	60	Combination	PFCC3012W	#6 – 2/0	Factory installed TGK24 & TNLK20. Order additional TGK12, TGK24, or TGK32 separately if needed.	PCC3012W
150	16	32	Combination	PFCC1615W	#6 – 250	Factory installed TGK12 & TNLK20. Order additional TGK12 or TGK24 separately if needed.	PCC1615W
	20	40	Combination	PFCC2015W	#6 – 250	Factory installed TGK24 & TNLK20. Order additional TGK12 or TGK24 separately if needed.	PCC2015W
200	20	40	Combination	PFCC2020W	#6 – 250	Factory installed TGK24 & TNLK20. Order additional TGK12 or TGK24 separately if needed.	PCC2020W
	30	60	Combination	PFCC3020W	#6 – 250	Factory installed TGK24 & TNLK20. Order additional TGK12, TGK24, or TGK32 separately if needed.	PCC3020W
	40	80	Combination	PFCC4020W	#6 – 250	Factory installed TGK42 & TNLK20. Order additional TGK12 or TGK42 separately if needed.	PCC4020W
225	40	80	Combination	PFCC4022W	#1 – 300	Factory installed TGK42 & TNLK20. Order additional TGK12 or TGK42 separately if needed.	PCC4022W

P-Series+ main lug convertible to main circuit breaker, NEMA 3R outdoor

Main ampere rating	1 pole, 1" spaces	Max single pole circuits	Front type	Replacement front ordering code ¹	Main wire size (AWG/kcmil) Cu-Al	Equipment ground kit	Ordering code ²
125	16	32	–	PFCC1612R	#6 – 2/0	Factory installed TGK12 & TNLK20. Order additional TGK12 separately if needed.	PCC1612R
	20	40	–	PFCC2012R	#6 – 2/0	Factory installed TGK24 & TNLK20. Order additional TGK12 or TGK24 separately if needed.	PCC2012R
	24	48	–	PFCC2412R	#6 – 2/0	Factory installed TGK24 & TNLK20. Order additional TGK12 or TGK24 separately if needed.	PCC2412R
200	20	40	–	PFCC2020R	#6 – 250	Factory installed TGK24 & TNLK20. Order additional TGK12 or TGK24 separately if needed.	PCC2020R
	30	60	–	PFCC3020R	#6 – 250	Factory installed TGK24 & TNLK20. Order additional TGK12 or TGK24 separately if needed.	PCC3020R
	40	80	–	PFCC4020R	#6 – 250	Factory installed TGK42 & TNLK20. Order additional TGK12 or TGK42 separately if needed.	PCC4020R

¹All ABB ReliaHome load centers come with the front included in the box. A replacement front is only needed if one is damaged or lost.

²For main breaker conversion utilize THQMVXXXF for 150A-225A MLO load centers and THQMHXXXF for 125A MLO load centers. Please see main circuit breaker section of the Buylog for more details.

ReliaHome T-Series

Table of contents

ReliaHome T-Series	
Product overview	1-13
Ordering code construction	1-13
Main breaker factory installed indoor (NEMA 1) enclosure	1-14
Main breaker factory installed outdoor (NEMA 3) enclosure	1-14
Main lug factory installed indoor (NEMA 1) enclosure	1-14
Main lug factory installed outdoor (NEMA 3) enclosure	1-14

ReliaHome load centers

T-Series product overview



Designed to control the distribution of energy through the house. T-Series load centers' unique features enable a safe, fast, and easy installation. At the same time, they deliver benefits in design, function, and quality that are intuitive and impactful.

ReliaHome T-Series

- Galvanized enclosures
- Backed out neutral screws
- 2-year limited warranty
- Copper bus

Features

- UL listed (Panelboards No. 67)
- Single-phase, three-wire, 120/240 V AC
- 60°/75°C conductor rating
- Suitable for use as service entrance Equipment when installed in accordance with the National Electrical Code
- 22kAIC RMS symmetrical, except where noted
- 2-14 circuit devices UL listed for bottom mounted lugs by installing complete unit (box, interior and front) upside down.
- For a listing of CSA listed load centers, visit electrification.us.abb.com.

Ordering code construction

T	LM	Q	8	12	S	CU	D
ABB identification T = ReliaHome T-Series							Specials G = Factory installed ground bar D = Optional door for 6-8 space panel W = White trim
Type of main M = Main circuit breaker L = Main lug LM = Convertible PL = Main lug (Thermoplastic)							Bus bar material CU = Copper bus
For use with THQL/THHQL circuit breakers only							Trim type/color, enclosure type C = Combination surface/flush F = Flush S = Surface R = NEMA 3R
Maximum spaces/circuits 2 = 2-1" spaces, 4 circuits 4 = 4-1" spaces, 8 circuits 5 = 5-1" spaces, 10 circuits 6 = 6-1" spaces, 12 circuits 8 = 8-1" spaces, 16 circuits 12 = 12-1" spaces, 24 circuits 14 = 14-1" spaces, 28 circuits							Main ampere rating 40 = 40 amperes 70 = 70 amperes 10 = 100 amperes 12 = 125 amperes 15 = 150 amperes 20 = 200 amperes

ReliaHome T-Series load centers

T-Series main circuit breaker, NEMA 1 indoor

Main ampere rating	1 pole, 1" spaces	Max single pole circuits	Front type	Main wire size (AWG/kcmil) Cu-Al	Equipment ground kit	Ordering code
100	12	24	Combination	4-1/0	TGL2 & TLG20 installed	TMQ1210CCU
125	12	24	-	1-2/0	TGL2 & TLG20 installed	TMQ1212CCU

T-Series main circuit breaker, NEMA 3R outdoor

Main ampere rating	1 pole, 1" spaces	Max single pole circuits	Front type	Main wire size (AWG/kcmil) Cu-Al	Equipment ground kit	Ordering code
100	12	24	-	4-1/0	TGK12/TGK24 (order separately)	TMQ1210RCU
125	12	24	-	1-2/0	TGK12/TGK24 (order separately)	TMQ1212RCU

T-Series main lug, NEMA 1 indoor

Main ampere rating	1 pole, 1" spaces	Max single pole circuits	Front type	Main wire size (AWG/kcmil) Cu-Al	Equipment ground kit	Ordering code
40	2	4	Surface	14-4	TGK4 (order separately)	TL240SCU
70	2	4	Surface	6-3	TGK4 (order separately)	TL270SCU
125	4	8	Combination	1-2/0	TGL1 installed	TLQ412CT
			Thermoplastic	1-2/0	TGL1 installed	TPLQ412CT

T-Series main lug, NEMA 3R outdoor

Main ampere rating	1 pole, 1" spaces	Max single pole circuits	Front type	Main wire size (AWG/kcmil) Cu-Al	Equipment ground kit	Ordering code
40	2	4	-	14-4	TGK4 (order separately)	TL240RCU
70	2	4	-	6-3	TGK4 (order separately)	TL270RCU
100	5	10	-	6-3	TGL1 installed	TLQ510RT
125	4	8	-	1-2/0	TGL1 (order separately)	TLQ412R2¹
			-	1-2/0	TGL1 installed	TLQ412RT1
			Thermoplastic	1-2/0	TGL1 installed	TPLQ412RT

¹This 4 space outdoor load center comes in a larger enclosure with extra knockouts. For a standard size 4 space outdoor load center with standard knockouts please review the TLQ412RT1.

NOTE: Circuit breakers must be ordered separately. [Click here.](#)

ReliaHome T-Series load centers

T-Series main lug convertible to main circuit breaker, NEMA 1 indoor

Main ampere rating	1 pole, 1" spaces	Max single pole circuits	Front type	Main wire size (AWG/kcmil) Cu-Al	Equipment ground kit	Ordering code
125	6	12	Flush	6-1	TGL2 (order separately)	TLMQ612FCU ^{1,2,4}
			Flush	6-1	TGL2 (order separately)	TLMQ612FCUD ^{1,2}
			Flush	6-1	TGL2 factory installed	TLMQ612FCUDG ^{1,2}
			Surface	6-1	TGL2 (order separately)	TLMQ612SCU ^{1,2,4}
			Surface	6-1	TGL2 (order separately)	TLMQ612SCUD ^{1,2}
			Surface	6-1	TGL2 factory installed	TLMQ612SCUDG ^{1,2}
	8	16	Flush	6-1	TGL2 (order separately)	TLMQ812FCU ^{1,2,4}
			Flush	6-1	TGL2 (order separately)	TLMQ812FCUD ^{1,2}
			Flush	6-1	TGL2 factory installed	TLMQ812FCUDG ^{1,2}
			Surface	6-1	TGL2 (order separately)	TLMQ812SCU ^{1,2,4}
			Surface	6-1	TGL2 (order separately)	TLMQ812SCUD ^{1,2}
			Surface	6-1	TGL2 factory installed	TLMQ812SCUDG ^{1,2}
14	28	Combination	6-2/0	TGL2 factory installed	TLMQ1412CCU ^{2,3}	

T-Series main lug convertible to main circuit breaker, NEMA 1 indoor white

Main ampere rating	1 pole, 1" spaces	Max single pole circuits	Front type	Main wire size (AWG/kcmil) Cu-Al	Equipment ground kit	Ordering code
125	14	28	Combination	6-2/0	Included ³	TLMQ1412CCUW ^{2,3}

T-Series main lug convertible to main circuit breaker, NEMA 3R outdoor

Main ampere rating	1 pole, 1" spaces	Max single pole circuits	Front type	Main wire size (AWG/kcmil) Cu-Al	Equipment ground kit	Ordering code
125	6	12	-	6-1	TGL2 (order separately)	TLMQ612RCU ¹
	8	16	-	6-1	TGL2 (order separately)	TLMQ812RCU ¹
	14	28	-	6-2/0	TGL2 factory installed	TLMQ1412RCU ^{2,3}

¹For main breaker, order THQLRK2 retainer kit plus 2-pole circuit breaker. 100 amp maximum due to wire bending requirements.

²No lock provision available. Use next size larger load center such as PAL1612 with a TDL106 accessory if locking provision is required.

³For main breaker, order THQLRK3 retainer kit plus 2-pole circuit breaker. 100 amp maximum due to wire bending requirements.

⁴Load center front does not come with door. If a door is desired choose the ordering code with D suffix. If a door and a factory installed ground bar is desired choose the ordering code with a DG suffix.

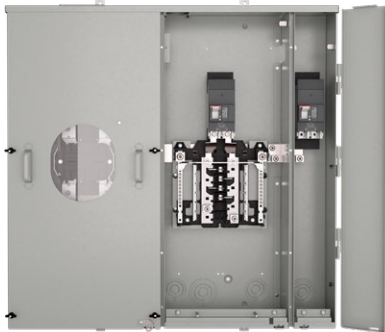
ReliaHome meter combos

Table of contents

ReliaHome meter combos	
Product overview	1-17
Ordering code construction - Meter main	1-18
Meter Main, ringless	1-19
Meter main, ring type	1-19
Ordering code construction - Single main	1-20
Single main, ringless	1-21
Single main, ring type, top bottom, main breaker	1-22
Single main, ring type, side-by-side, main breaker	1-23
Single main, ring type, extra wide, main breaker	1-23
Single main, ring type, top bottom, main breaker, EUSERC	1-24
Ordering code construction - Dual main	1-25
Dual main, ringless, class 320	1-26
Dual main, ring type, class 320	1-27

ReliaHome meter combos

Product overview



Designed and manufactured for quality applications, these ReliaHome meter combos are a superior solution to specific applications. Increased durability and reliability, maximum circuit layout flexibility and ease of installation add up to lower total installed cost.

Features

- UL listed (Panelboards No. UL67)
- Service barriers included for factory installed main circuit breaker and main circuit breaker kits (required to meet UL67 for service entrance applications)
- ReliaHome meter combos are NEMA 3R outdoor rated.



Solar ready meter combos

ReliaHome Meter combos are a perfect complement for residential applications that use solar photovoltaic (PV) power to optimize reliability and protection. ReliaHome meter combos are UL listed for solar ready applications and comply with the National Electric Code (NEC) for use with a photovoltaic (PV) power source.

Look for our solar ready logo for the ABB meter combos that comply with the National Electrical Code (NEC) for use with PF power source. Per NEC 705.12, these meter combos can handle current up to 120% of the bus ampacity, using standard back fed circuit breakers.

Found on page 1-23.



Max PV + Main breaker rating ≤ Busbar ratings x 1.2

Ordering code	Main breaker rating	Bus rating	Max PV breaker rating
TSM1610CFUCU	100 A	125 A	50 A
TSM1610CSCU	100 A	125 A	50 A
TSM2020CFUCU	200 A	225 A	70 A
TSM2020CSCU	200 A	225 A	70 A

ReliaHome meter combos

Ordering code construction - Meter main

T **M** **10** **RMC**

Load center

T = ABB non-PON designation

Socket type

M = Ring or Ringless

SMR = Ringless

Suffix

RMC = Various utility approvals

CSGP = GP** approved

RMCFMG = MEG/FMG* approved

Amperage rating

10 = 100A

12 = 125A

15 = 150A

20 = 200A

*FMG = Florida Meeting Group now part of Meter Equipment Group (MEG) utility

**GP = Gorgia Power utility

ReliaHome meter combos

Meter main

Main ampere rating	Ring / Ringless	Bypass type	UL incoming	Ordering code
100	Ring	None	OH/UG	TM10RMC ¹
	Ringless	None	OH/UG	TM10RMCFMG ²
125	Ring	None	OH/UG	TM12RMC ¹
	Ringless	None	OH/UG	TM12RMCFMG ²
150	Ring	None	OH/UG	TM15RMC ¹
	Ringless	None	OH/UG	TM15RMCFMG ²
	Ringless	None	OH/UG	TSMR015CSGP ³
200	Ring	None	OH/UG	TM20RMC ¹
	Ringless	None	OH/UG	TM20RMCFMG ²
	Ringless	None	OH/UG	TSMR020CSGP ³

NOTE: All meter mains are 10K AIC

NOTE: All meter mains have a Surface front type

NOTE: Please review your local utility specs to determine the SKU to fit your local needs.

¹Devices include removable closing cap. Order hub separately. See page 1-57.

²MEG Approved

³Georgia Power Approved

Application data

Ordering code	Box number	Enclosure width (in inches)	Enclosure height (in inches)	Enclosure depth (in inches)	Factory installed service disconnect	Main wire size (AWG/kcmil) Cu-Al
TM10RMC	R32	16	17	5	A1A	2-250
TM10RMCFMG	R32	16	17	5	A1A	2-250
TM12RMC	R32	16	17	5	A2A	2-250
TM12RMCFMG	R32	16	17	5	A2A	2-250
TM15RMC	R32	16	17	5	A2A	2-250
TM15RMCFMG	R32	16	17	5	A2A	2-250
TSMR015CSGP	R32A	18-7/8	18-9/16	5	A2A	2-250
TM20RMC	R32	16	17	5	A2A	2-250
TM20RMCFMG	R32	16	17	5	A2A	2-250
TSMR020CSGP	R32A	18-7/8	18-9/16	5	A2A	2-250

NOTE: Circuit breakers must be ordered separately. [Click here.](#)

ReliaHome meter combos

Ordering code construction - Single main

	T	SM	R	20	20	C	S	CU
Load center T = ABB non-PON designation								
Main type SM = Meter socket - main breaker (with circuits)								
Socket type Blank = Ring - no bypass R = Ringless - no bypass B = Ringless - lever bypass								
Max number of 1" spaces "2 - 40" = Maximum # of 1" spaces for breakers								
Amperage rating 10 = 100A 12 = 125A 15 = 150A 20 = 200A 22 = 225A								
								Bussing type, feed-thru type AL = Aluminum non-feed thru CU = Copper non-feed thru FL = Copper feed-thru
								Front type F = Semi-Flush S = Surface W = Surface - EUSERC wide body
								Feed type U = Underground C = Overhead/underground

ReliaHome meter combos



TSMR420CSFL

Single main, ringless

Main ampere rating	Max branch breaker spaces	Max branch breaker circuits	Interrupting rating	Front type	Bypass type	UL incoming	Ordering code
125	24	24	22	Surface	Horn Bypass	OH/UG	TSMR1212CSCU ¹
	24	24	22	Surface	Lever Bypass	OH/UG	TSMB1212CSCU ¹
150	8	8	22	Surface	None	OH/UG	TSMR415CSCUGP ^{2,4}
	8	8	22	Surface	None	OH/UG	TSMR415CSFLFMG ^{2,3}
	8	8	22	Surface	Horn Bypass	OH/UG	TSMR415CSCU
	16	16	22	Surface	None	OH/UG	TSMR815CSFLFMG ^{2,3}
	40	40	22	Surface	Horn Bypass	OH/UG	TSMR2015CSCU ¹
	40	40	22	Surface	Lever Bypass	OH/UG	TSMB2015CSCU ¹
200	8	8	22	Surface	None	OH/UG	TSMR420CSFLFMG ^{2,3}
	8	8	22	Surface	None	OH/UG	TSMR420CSCUGP ^{2,4}
	8	8	22	Surface	Horn Bypass	OH/UG	TSMR420CSCU
	16	16	22	Surface	None	OH/UG	TSMR820CSFLFMG ^{2,3}
	40	40	22	Surface	Horn Bypass	OH/UG	TSMR2020CSCU ¹
	40	40	22	Surface	Lever Bypass	OH/UG	TSMB2020CSCU ¹
	40	40	22	Surface	None	OH/UG	TSMR2020CSCUFMG ³

¹Devices include removable closing cap. Order hub separately. See page 1-57.

²Feed through lugs provided

³MEG Approved

⁴Georgia Power Approved

Application data

Ordering code	Box number	Enclosure width (In inches)	Enclosure height (In inches)	Enclosure depth (In inches)	Factory installed service disconnect	Main wire size (AWG/kcmil) Cu-Al	Equipment ground kit
TSMR1212CSCU	R30	14-1/2	40-3/4	6-1/2	THHQL	6-350	TGK12 (Order separately)
TSMB1212CSCU	R20	14-1/2	40-3/4	6-1/2	THHQL	12-2/0	TGK12 (Order separately)
TSMR415CSCUGP	R40	14-1/2	32	4-1/2	THQMV	6-350	TGL2 included
TSMR415CSFLFMG	R36A	14-1/2	28-1/2	4-1/2	THQMV	6-350	TGL2 included
TSMR415CSCU	R31	14-1/2	34	6-1/2	THQMV	6-350	TGK12 installed
TSMR815CSFLFMG	R37A	14-1/2	32	4-1/2	THQMV	6-350	TGK24 included
TSMR2015CSCU	R30	14-1/2	40-3/4	6-1/2	THQMV	6-350	TGK12 (Order separately)
TSMB2015CSCU	R18	14-1/2	40-3/4	6-1/2	THQMV	1-300	TGK12 (Order separately)
TSMR420CSFLFMG	R36A	14-1/2	28-1/2	4-1/2	THQMV	6-350	TGL2 included
TSMR420CSCUGP	R40	14-1/2	32	4-1/2	THQMV	6-350	TGL2 included
TSMR420CSCU	R31	14-1/2	34	6-1/2	THQMV	6-350	TGK12 installed
TSMR2020CSCU	R30	14-1/2	40-3/4	6-1/2	THQMV	6-350	TGK12 (Order separately)
TSMB2020CSCU	R18	14-1/2	40-3/4	6-1/2	THQMV	1-300	TGK12 (Order separately)
TSMR820CSFLFMG	R37A	14-1/2	32	4-1/2	THQMV	6-350	TGK24 included
TSMR2020CSCUFMG	R403	14-1/2	34-1/2	4-1/2	THQMV	6-350	TGK24 included

NOTE: Circuit breakers must be ordered separately. [Click here.](#)

ReliaHome meter combos



TSM420CSCU

Single main, ring type, main breaker, top/bottom feed

Main ampere rating	Max branch breaker spaces	Max branch breaker circuits	Interrupting rating	Front type	Bypass type	UL incoming	Ordering code
150	8	8	22	Surface	None	OH/UG	TSM415CSCU
	16	16	22	Surface	None	OH/UG	TSM815CSFL
200	8	8	22	Surface	None	OH/UG	TSM420CSCU
	16	16	22	Surface	None	OH/UG	TSM820CSFL

NOTE: All devices include removable closing cap. Order hub separately. See page 1-57.

Application data

Ordering code	Box number	Enclosure width (In inches)	Enclosure height (In inches)	Enclosure depth (In inches)	Factory installed service disconnect	Main wire size (AWG/kcmil) Cu-Al	Equipment ground kit
TSM415CSCU	R36	14-1/2	28-1/2	4-1/2	THQMV	6-350	TGL2 included
TSM815CSFL	R378	14-1/2	32	4-1/2	THQMV	6-350	TGK24 included
TSM420CSCU	R36	14-1/2	28-1/2	4-1/2	THQMV	6-350	TGL2 included
TSM820CSFL	R37B	14-1/2	32	4-1/2	THQMV	6-350	TGK24 included

NOTE: Circuit breakers must be ordered separately. [Click here.](#)

ReliaHome meter combos



TSMR420CSFL

Single main, ring, side-by-side, main breaker

Main ampere rating	Max branch breaker spaces	Max branch breaker circuits	Interrupting rating	Front type	Bypass type	UL incoming	Ordering code
100	32	32	22	Semi-flush	None	OH/UG	TSM1610CFCU ^{2,4}
	32	32	22	Surface	None	OH/UG	TSM1610CSCU ^{1,2,3,4}
125	24	34	22	Semi-flush	None	OH/UG	TSM1212CFCU ²
	24	34	22	Surface	None	OH/UG	TSM1212CSCU ^{1,2,3}
	32	32	22	Semi-flush	None	OH/UG	TSM1612CFCU ²
	32	32	22	Surface	None	OH/UG	TSM1612CSCU ^{1,2,3}
150	16	16	22	Surface	None	OH/UG	TSM815CSCU ¹
200	16	16	22	Surface	None	OH/UG	TSM820CSCU ¹
	40	40	22	Semi-flush	None	OH/UG	TSM2020CFCU ^{2,4}
	40	40	22	Surface	None	OH/UG	TSM2020CSCU ^{1,2,3,4}

¹Devices include removable closing cap. Order hub separately. See page 1-57.

²Accepts field installed fifth jaw terminal in the 3 or 9 o'clock position. Ordering code TJAW53; order separately.

³Surface mounted units have two hub provisions on top end wall.

⁴Unit ships with factory-installed solar-ready label.

Application data

Ordering code	Box number	Enclosure width (In inches)	Enclosure height (In inches)	Enclosure depth (In inches)	Factory installed service disconnect	Main wire size (AWG/kcmil) Cu-Al	Equipment ground kit
TSM1610CFCU	R19	14-9/16	28-1/2	7-3/16	THHQL	12-2/0	TGK12 (order separately)
TSM1610CSCU	R20	14-9/16	27-5/16	5-7/16	THHQL	12-2/0	TGK12 (order separately)
TSM1212CFCU	R19	14-9/16	28-1/2	7-3/16	THHQL	12-2/0	TGK12 (order separately)
TSM1212CSCU	R20	14-9/16	27-5/16	5-7/16	THHQL	12-2/0	TGK12 (order separately)
TSM1612CFCU	R19	14-9/16	28-1/2	7-3/16	THHQL	12-2/0	TGK12 (order separately)
TSM1612CSCU	R20	14-9/16	27-5/16	5-7/16	THHQL	12-2/0	TGK12 (order separately)
TSM815CSCU	R16	14-9/16	33	6-3/16	THQMV	1-300	TGK12 (order separately)
TSM820CSCU	R16	14-9/16	33	6-3/16	THQMV	6-350	TGK12 (order separately)
TSM2020CFCU	R17	14-9/16	33	7-3/16	THQMV	1-300	TGK12 (order separately)
TSM2020CSCU	R18	14-9/16	33	6-3/16	THQMV	1-300	TGK12 (order separately)

Single main, ring type, extra wide, main breaker

Main ampere rating	Max branch breaker spaces	Max branch breaker circuits	Interrupting rating	Front type	Bypass type	UL incoming	Ordering code
200	40	64	22	Surface	None	UG	TSM3220UWCU ⁵
	40	80	22	Surface	None	UG	TSM4020UWCU ⁵

⁵Devices include removable closing cap. Order hub separately. See page 1-57.

Application data

Ordering code	Box number	Enclosure width (In inches)	Enclosure height (In inches)	Enclosure depth (In inches)	Factory installed service disconnect	Main wire size (AWG/kcmil) Cu-Al	Equipment ground kit
TSM3220UWCU	R28	22-1/2	27-7/8	6-1/4	THQMV	1-300	TGK12 (order separately)
TSM4020UWCU	R29	22-1/2	34-7/8	6-1/4	THQMV	1-300	TGK12 (order separately)

NOTE: Circuit breakers must be ordered separately. [Click here.](#)

ReliaHome meter combos



TSM2420US42

Single main, ring type, top bottom, main breaker, EUSERC

Main ampere rating	Max branch breaker spaces	Max branch breaker circuits	Interrupting rating	Front type	Bypass type	UL incoming	Ordering code
200	42	42	22	Semi-flush	None	UG	TSM2420UF42 ²
	42	42	22	Surface	None	UG	TSM2420US42 ^{1,2}
	40	42	22	Semi-flush	None	UG	TSM3220UFCU
	40	42	22	Surface	None	UG	TSM3220USCU ²
225	40	40	22	Semi-flush	None	UG	TSM2022UFCU
	40	40	22	Surface	None	UG	TSM2022USCU ²
	40	42	22	Semi-flush	None	UG	TSM3222UFCU
	40	42	22	Surface	None	UG	TSM3222USCU ²

¹Devices include removable closing cap. Order hub separately. See page 1-57.

²Accepts field installed fifth jaw terminal in the 3 or 9 o'clock position. Ordering code TJAW53; order separately.

Application data

Ordering code	Box number	Enclosure width (In inches)	Enclosure height (In inches)	Enclosure depth (In inches)	Factory installed service disconnect	Main wire size (AWG/kcmil) Cu-Al	Equipment ground kit
TSM2420UF42	R17	14-9/16	38	7-3/16	THQMV	1-4/0	TGK12 (order separately)
TSM2420US42	R17	14-9/16	38	7-3/16	THQMV	1-4/0	TGK12 (order separately)
TSM3220UFCU	R27	14-9/16	48	7-3/16	THQMV	1-300	TGK12 (order separately)
TSM3220USCU	R27	14-9/16	48	7-3/16	THQMV	1-300	TGK12 (order separately)
TSM2022UFCU	R21	14-9/16	44	7-3/16	THQMV	1-300	TGK12 (order separately)
TSM2022USCU	R22	14-3/16	44	7-3/16	THQMV	1-300	TGK12 (order separately)
TSM3222UFCU	R26	14-9/16	48	7-3/16	THQMV	1-300	TGK12 (order separately)
TSM3222USCU	R27	14-9/16	48	7-3/16	THQMV	1-300	TGK12 (order separately)

NOTE: Circuit breakers must be ordered separately. [Click here.](#)

ReliaHome meter combos

Ordering code construction - Dual main type (TSD)

T	SD	R	8	40	U	F	CU
Load center T = ABB non-PON designation						Bussing type, feed-thru type 42 = Copper 42ckt 1/2" spaces CU = Copper Non-Feed Thru FL = Copper Feed-Thru	
Main type SD = Meter Socket Dual Main						Front type C = Surface (for TSDA type only) F = Semi-Flush S = Surface	
Socket type A = Ring - Link Bypass (TSD style) R = Ringless Bypass or No Bypass (TSD style)						Feed type U = Underground C = Overhead/underground	
Max number of 1" spaces "0 - 24" = Maximum # of 1" spaces/ckts for breakers							
Amperage rating 30 = 300A 32 = 320A 40 = 400A							

Ordering code construction - Dual main type (TM/TMH)

T	M	24	40	RMRS
Load center T = ABB non-PON designation				Socket Type RMS = Ring Type (TM and TMH style) RMRS = Ringless Type (TM and TMH style)
Main type M = Meter Socket Dual Main 10K MH = Meter Socket Dual Main 22K				Amperage rating 30 = 300A 32 = 320A 40 = 400A
Max number of 1" spaces "0 - 24" = Maximum # of 1" spaces/ckts for breakers				

ReliaHome meter combos

Dual Main Breaker, ringless, Class 320

Main ampere rating	Max branch breaker spaces	Max branch breaker circuits	Interrupting rating	Front type	Bypass type	UL incoming	Socket layout type	Ordering code
300	8	16	22	Semiflush	Lever	OH/UG	Side by Side	TSDR830CFCUGP ^{3,5}
	8	16	22	Surface	Lever	UG	Side by Side	TSDR830USCU ^{3,5}
320	0	0	22	Semiflush	Lever	UG	Side by Side	TSDR032UFCU
400	0	0	22	Flush	Lever	UG	Side by Side	TSDR040UFCUAEP ⁴
	0	0	22	Semiflush	Lever	UG	Side by Side	TSDR040UFCU
	8	16	22	Surface	Lever	UG	Side by Side	TSDR840UFCU ⁵
	8	16	22	Semiflush	Lever	OH/UG	Side by Side	TSDR840CFCUGP ^{3,5}
	8		22	Flush	Lever	UG	Side by Side	TSDR840UFCUAEP ⁴
	24	40	10	Semiflush	Lever	UG	Side by Side	TM2440RMRS ^{1,2}

*Note: Please review your local utility specs to determine the SKU to fit your local needs.

¹For semi-flush applications, order surface enclosure load center and field installed kit, Ordering code SF400.

²Stud provisions only provided.

³Georgia Power Approved

⁴AEP Approved

⁵MEG Approved

Application data

Ordering code	Box number	Enclosure width (in inches)	Enclosure height (in inches)	Enclosure depth (in inches)	Factory installed service disconnect	Secondary service disconnect*	Main wire size (AWG/kcmil) Cu-Al	Equipment ground kit
TSDR830CFCUGP*	R33	30-1/4	33	6-3/32	A2N150CTL-2SB	Available breakers: 1,6	250 MCM	TGL2, TGL4 & TGL8
TSDR830USCU*	R33	30-1/4	33	6-3/32	A2N150CTL-2SB	Available breakers: 1,2,3,6,7,8	250 MCM	TGL2, TGL4 & TGL8
TSDR032UFCU	R33	30-1/4	33	6-3/32	A2N200CTL-2SB	THHQL21125	3/0	TGL2, TGL4 & TGL8
TSDR040UFCUAEP	R33	30-1/4	33	6-3/32	A2N200CTL-4SB	Available breakers: 1,2,3,4,5,6,7,8,9,10	-	-
TSDR040UFCU	R33	30-1/4	33	6-3/32	A2N200CTL-4SB	Available breakers: 1,2,3,4,5,6,7,8,9,10	(1) 800 or (2) 400 compression type	(2) TGL2 (order separately)
TSDR840UFCU	R33	30-1/4	33	6-3/32	A2N200CTL-2SB	Available breakers: 1,2,3,4,5,6,7,8,9,10	(1) 800 or (2) 400 compression type	(2) TGL2 (order separately)
TSDR840CFCUGP*	R33	30-1/4	33	6-3/32	A2N200CTL-2SB	Available breakers: 1,2,3,4,5,6,7,8,9,10	250 MCM	TGL2, TGL4 & TGL8
TSDR840UFCUAEP	R33	30-1/4	33	6-3/32	A2N200CTL-2SB	Available breakers: 1,2,3,4,5,6,7,8,9,10	-	-
TM2440RMRS	R24	30-1/4	40	6	A2A200CTL-2SB	Available breakers: 1,2,3,4,5	(1) 800 or (2) 400 compression type (1) 1000 or (2) 350 pressure type	(2) TGL2 (order separately)

NOTE: The combined amperage of the two mains cannot exceed the main amperage rating of the SKU. IE: If your main is 300A then your two disconnects cannot exceed 300A.

*Includes factory installed secondary disconnect A2N150CTL-2SB or you can order any option shown in the Secondary service disconnect column of this table.

Secondary service disconnect:

- ¹A2A100CTL-4SB
- ²A2A125CTL-4SB
- ³A2A150CTL-4SB
- ⁴A2A175CTL-4SB
- ⁵A2A200CTL-4SB
- ⁶A2N100CTL-4SB
- ⁷A2N125CTL-4SB
- ⁸A2N150CTL-4SB
- ⁹A2N175CTL-4SB
- ¹⁰A2N200CTL-4SB

NOTE: Circuit breakers must be ordered separately. [Click here.](#)

ReliaHome meter combos

Dual Main Breaker, ring, class 320

Main ampere rating	Max branch breaker spaces	Max branch breaker circuits	Interrupting rating	Front type	Bypass type	UL incoming	Socket layout type	Ordering code
320	0	0	22	Semiflush	Lever bypass	UG	Side by Side	TSD032UFUCU
	24	48	10	Semiflush	None	UG	Side by Side	TM2432RMS ^{1,2}
	24	48	22	Surface	Link	UG	Side by Side	TSDA2432UC42
400	24	48	10	Semiflush	None	UG	Side by Side	TM2440RMS ^{1,2}
	24	48	22	Semiflush	Link	UG	Side by Side	TSDA2440UC42

¹For semi-flush applications, order surface enclosure load center and field installed kit, Ordering code SF400.

²Stud provisions only provided.

Application data

Ordering code	Box number	Enclosure width (in inches)	Enclosure height (in inches)	Enclosure depth (in inches)	Factory installed service disconnect	Secondary service disconnect	Main wire size (AWG/kcmil) Cu-Al	Equipment ground kit
TSD032UFUCU	R33	30-1/4	33	6-3/32	A2N200CTL-4SB	THHQL21125	(1) 800 or (2) 400 compression type	(2) TGL2 (order separately)
TM2432RMS	R24	30-1/4	40	6	A2A200CTL-2SB	THHQL21125	(1) 800 or (2) 400 compression type (1) 1000 or (2) 350 pressure type	(2) TGL2 (order separately)
TSDA2432UC42	R24	30-1/4	40	6	THQMV200CTL	THHQL21125	(1) 800 or (2) 400 compression type	(2) TGL2 (order separately)
TM2440RMS	R24	30-1/4	40	6	A2A200CTL-2SB	A2A100CTL-4SB A2A125CTL-4SB A2A150CTL-4SB A2A175CTL-4SB A2A200CTI-4SB	(1) 800 or (2) 400 compression type (1) 1000 or (2) 350 pressure type	(2) TGL2 (order separately)
TSDA2440UC42	R24	30-1/4	40	6	THQMV200CTL	THQMV200CTL	(1) 800 or (2) 400 compression type	(2) TGL2 (order separately)

NOTE: The combined amperage of the two mains cannot exceed the main amperage rating of the SKU. IE: If your main is 300A then you cannot utilize a 200A and a 150A main because this has a combined amperage of 350.

NOTE: Circuit breakers must be ordered separately. [Click here.](#)

ReliaHome three phase load centers

Table of contents

ReliaHome three phase load centers	
Product overview	1-29
Ordering code construction	1-29
Main lug factory installed, indoor (NEMA 1) enclosure	1-30
Main lug factory installed, outdoor (NEMA 3R) enclosure	1-31
Main breaker factory installed, indoor (NEMA 1) enclosure	1-31
Main breaker factory installed, outdoor (NEMA 3R) enclosure	1-32

ReliaHome three phase load centers

Product overview



The ReliaHome three-phase load center is designed for use in commercial or high-rise residential units. The galvanized box and tin plated copper stabs ensure the reliability and durability of the load center. The product is available with the main circuit breaker factory installed or the main lugs factory installed.

Features

- UL Listed (Panelboards No. 67)
- Three-phase, four-wire, 208Y/120 V AC
- 60°/75°C Conductor Rating
- Suitable for Use as Service Entrance Equipment when Installed in Accordance with the National Electrical Code
- 22kAIC RMS symmetrical Short-circuit Rating Standard
- Bottom feed models available where noted with a "B" suffix.
- For a listing of CSA Listed load centers, visit electrification.us.abb.com.
- Copper breaker mounting stabs with aluminum bus¹

Ordering code construction

T	M	42	4	20	C	CU	B
ABB identification	Type	Maximum number 1" spaces	Single phase = Omit this field	Bus ampere rating	Insert for PowerMark Gold	Insert for specials	Insert for specials
	M = Main breaker	2, 4, 6...42	Insert for 3-Phase 4-Wire Load Centers	40 = 40 Amps	CU = Copper Bus	G or T = Factory installed ground bar	G or T = Factory installed ground bar
	L = Main lug			70 = 70 Amps	42 = Copper Bus Full 42 circuit panel	B = Bottom feed main breaker	B = Bottom feed main breaker
	LM = Convertible			10 = 100 Amps		FL = Factory installed feed-through lugs	FL = Factory installed feed-through lugs
	PL = Main lug (Thermoplastic)			12 = 125 Amps		D = Optional door for 6-8 circuit panel. (Doors standard on all units 12 circuits or greater)	D = Optional door for 6-8 circuit panel. (Doors standard on all units 12 circuits or greater)
				15 = 150 Amps		W = White trim	W = White trim
					Front type		
					C = Combination surface/flush		
					F = Flush		
					S = Surface		
					R = Outdoor		

ReliaHome three phase load centers

Main lug, factory installed, indoor (NEMA 1) enclosure, top/bottom feed

Main ampere rating	1 pole, 1" spaces	2 pole, 1" spaces	3 pole, 1" spaces	Total 1-pole spaces	Front type	Box number	Main wire size (AWG/kcmil) Cu-Al	Equipment ground kit	Ordering code
125	12	6	4	12	Combination	4	6-2/0	TGK12 (order separately) TGK24 (order separately)	TL12412C ³
150	18	8	6	18	Combination	7	1-3/0 (Cu), 2/0-3/0 (Al)	TGK24 (order separately) TGK32 (order separately)	TL18415C ³
	24	12	8	24	Combination	7	1-3/0 (Cu), 2/0-3/0 (Al)	TGK24 (order separately) TGK32 (order separately)	TL24415C ³
200	18	8	6	18	Combination	8	1-250 (Cu), 2/0-250 (Al)	TGK32 (order separately)	TL18420C ³
	30	14	10	30	Combination	11	1-250 (Cu), 2/0-250 (Al)	TGK32 (order separately)	TL30420C ³
	42	20	14	42	Combination	13	1-250 (Cu), 2/0-250 (Al)	TGK42 (order separately)	TL42420C
225	30	14	10	30	Combination	15	1-300 (Cu), 2/0-300 (Al)	(2) TGL2 (order separately)	TL30422C ⁴
	42	20	14	42	Combination	15	1-300 (Cu), 2/0-300 (Al)	(2) TGL2 (order separately)	TL42422C ⁴

¹Three-phase ReliaHome load centers have aluminum bus with copper breaker mounting stabs, providing copper-to-copper contact at breaker stabs.

²Also UL Listed for three-phase, four-wire 240/120 Volts ac delta and three-phase, three-wire 240 Volts ac branch breakers installed.

³Alternate main breaker: 100 Amp max. THQL (10kAIC), THHQL (22kAIC) three-pole, use retainer THQLRK. See page 1-58.

⁴Not suitable for use as service entrance equipment.

Note: See page 11-6, RL Series Lighting Panelboards as replacements for 300-600A load centers.

NOTE: Circuit breakers must be ordered separately. [Click here.](#)

ReliaHome three phase load centers



TL12412R



TM42420C

Main lug, factory installed¹, outdoor (NEMA 3R) enclosure, top feed

Main ampere rating	1 pole, 1" spaces	2 pole, 1" spaces	3 pole, 1" spaces	Total 1-pole spaces	Box number	Main wire size (AWG/kcmil) Cu-Al	Equipment ground kit	Ordering code
125	12	6	4	12	R3	6-2/0	TGK12 or TGK24 (order separately)	TL12412R ²
150	18	8	6	18	R4	1-3/0 (Cu), 2/0-3/0 (Al)	TGK24 or TGK32 (order separately)	TL18415R ²
	24	12	8	24	R4	1-3/0 (Cu), 2/0-3/0 (Al)	TGK24 or TGK32 (order separately)	TL24415R ²
200	18	8	6	18	R4	1-250 (Cu), 2/0-250 (Al)	TGK32 (order separately)	TL18420R ²
	30	14	10	30	R6	1-250 (Cu), 2/0-250 (Al)	TGK32 (order separately)	TL30420R ²
	42	20	14	42	R8	1-250 (Cu), 2/0-250 (Al)	TGK42 (order separately)	TL42420R ³
225	42	20	14	42	R8	1-300 (Cu), 2/0-300 (Al)	TGK42 (order separately)	TL42422R ³

¹Also UL Listed for three-phase, four-wire 240/120 Volts ac delta and three-phase, three-wire 240 Volts ac branch breakers installed.

²Alternate main breaker 100 Amp max. THQL (10kAIC), THHQL (22kAIC) three-pole, use retainer THQLRK. See page 1-58.

³Not suitable for use as service entrance equipment.

Main breaker, factory installed⁴, indoor (NEMA 1) enclosure

Main ampere rating	1 pole, 1" spaces	2 pole, 1" spaces	3 pole, 1" spaces	Total 1-pole spaces	Front type	Box number	Main wire size (AWG/kcmil) Cu-Al	Equipment ground kit	Ordering code
100	12	6	4	12	Combination	6	6-1/0 (Cu), 4-1/0 (Al)	TGK12 or TGK24 (order separately)	TM12410C ⁵
	18	8	6	18	Combination	6	6-1/0 (Cu), 4-1/0 (Al)	TGK24 or TGK32 (order separately)	TM18410C ⁵
125	30	14	10	30	Combination	12	1-3/0 (Cu), 2/0-3/0 (Al)	TGK32 (order separately)	TM30412C
	30	14	10	30	Combination	12	1-3/0 (Cu), 2/0-3/0 (Al)	TGK32 (order separately)	TM30412CB
150	24	12	8	24	Combination	11	1-3/0 (Cu), 2/0-3/0 (Al)	TGK32 (order separately)	TM24415C
	24	12	8	24	Combination	11	1-3/0 (Cu), 2/0-3/0 (Al)	TGK32 (order separately)	TM24415CB
	30	14	10	30	Combination	12	1-3/0 (Cu), 2/0-3/0 (Al)	TGK32 (order separately)	TM30415C
	30	14	10	30	Combination	12	1-3/0 (Cu), 2/0-3/0 (Al)	TGK32 (order separately)	TM30415CB
	42	20	14	42	Combination	15	1-3/0 (Cu), 2/0-3/0 (Al)	TGK42 (order separately)	TM42415C
	42	20	14	42	Combination	15	1-3/0 (Cu), 2/0-3/0 (Al)	TGK42 (order separately)	TM42415CB
200	24	12	8	24	Combination	12	1-300 (Cu), 2/0-300 (Al)	TGK32 (order separately)	TM24420C
	24	12	8	24	Combination	12	1-300 (Cu), 2/0-300 (Al)	TGK32 (order separately)	TM24420CB
	30	14	10	30	Combination	13	1-250 (Cu), 2/0-250 (Al)	TGK32 (order separately)	TM30420C
	30	14	10	30	Combination	13	1-250 (Cu), 2/0-250 (Al)	TGK32 (order separately)	TM30420CB
	42	20	14	42	Combination	14	1-250 (Cu), 2/0-250 (Al)	TGK42 (order separately)	TM42420C
	42	20	14	42	Combination	14	1-250 (Cu), 2/0-250 (Al)	TGK42 (order separately)	TM42420CB
225	42	20	14	42	Combination	15A	1-300 (Cu), 2/0-300 (Al)	(2) TGL2 (order separately)	TM42422C
	42	20	14	42	Combination	15A	1-300 (Cu), 2/0-300 (Al)	(2) TGL2 (order separately)	TM42422CB

⁴Also UL Listed for three-phase, four-wire 240/120 Volts Hi leg delta and three-phase, three-wire 240 Volts ac branch breakers installed.

⁵100 Amp indoor devices UL listed for bottom-feed by installing complete unit upside-down.

Note: See page 11-6, RL Series Lighting Panelboards as replacements for 300-600A load centers.

NOTE: Circuit breakers must be ordered separately. [Click here.](#)

ReliaHome three phase load centers



TM30420R

Main breaker, factory installed, outdoor (NEMA 3R) enclosure, top feed

Main ampere rating	1 pole, 1" spaces	2 pole, 1" spaces	3 pole, 1" spaces	Total 1-pole spaces	Box number	Main wire size (AWG/kcmil) Cu-Al	Equipment ground kit	Ordering code
100	18	8	6	18	R4	6-1/0 (Cu), 4-1/0 (Al)	TGK24 or TGK32 (order separately)	TM18410R
125	30	14	10	30	R7	1-3/0 (Cu), 2/0-3/0 (Al)	TGK32 (order separately)	TM30412R
150	24	12	8	24	R6	1-3/0 (Cu), 2/0-3/0 (Al)	TGK32 (order separately)	TM24415R
	30	14	10	30	R7	1-3/0 (Cu), 2/0-3/0 (Al)	TGK32 (order separately)	TM30415R
200	30	14	10	30	R7B	1-250 (Cu), 2/0-250 (Al)	TGK32 (order separately)	TM30420R
	42	20	14	42	R8	1-250 (Cu), 2/0-250 (Al)	TGK42 (order separately)	TM42420R
225	42	20	14	42	R8B	1-300 (Cu), 2/0-300 (Al)	TGK42 (order separately)	TM42422R

Note: See page 11-6, RL Series Lighting Panelboards as replacements for 300-600A load centers.

ReliaHome generator panels

Table of contents

ReliaHome generator panels	
Product overview	1-34
Main breaker, two interlocked, indoor (NEMA 1) enclosure	1-34
Main breaker, two interlocked, outdoor (NEMA 3R) enclosure	1-34
Twist lock power inlets	1-34

ReliaHome generator panels



Quickly and easily connect a residential generator with the homes electrical system. It is the ideal on/off switching system that allows the homeowner to change between power provided by the electrical utility and the generator. ReliaHome main breaker generator panel helps to ensure the continuous operation of critical appliances such as lighting, refrigerators, air conditioning, and water heaters.

Features

- Single-phase, three-wire, 120/240 V AC
- Suitable for use in accordance with Article 702 of the National Electrical Code, ANSI/NFPA 70
- Single-phase, 2 interlock 60A or 30A main breakers, 8 circuits max.
- Safety and convenience when using a generator - 14,000 peak wattage, 11,520 continuous load, 48 amps at 240 volts.
- Maintains power to such critical circuits as those for furnace, pump, refrigerator, lights.
- Connected dual circuit breaker mechanism ensures that only one source is active at a time.



Main breaker, two interlocked, indoor (NEMA 1) enclosure, top/bottom feed

Main ampere rating	1 pole, 1" spaces	2 pole, 1" spaces	1 pole, 1/2" spaces	2 pole, 1/2" spaces	Total 1-pole spaces	Max single pole circuits	Front type	Box number	Main wire size (AWG/kcmil) Cu-Al	Equipment ground kit	Ordering code
30	4	2	8	4	8	8	Flush	3A	6-1	TGK12 included	TM830FCUGEN
	4	2	8	4	8	8	Surface	3A	6-1	TGK12 included	TM830SCUGEN
60	4	2	8	4	8	8	Flush	3A	6-1	TGK12 included	TM860FCUGEN
	4	2	8	4	8	8	Surface	3A	6-1	TGK12 included	TM860SCUGEN

Main breaker, two interlocked, outdoor (NEMA 3R) enclosure, top feed

Main ampere rating	1 pole, 1" spaces	2 pole, 1" spaces	1 pole, 1/2" spaces	2 pole, 1/2" spaces	Total 1-pole spaces	Box number	Main wire size (AWG/kcmil) Cu-Al	Equipment ground kit	Ordering code
30	4	2	8	4	8	R2A	6-1	TGK12 included	TM830RCUGEN
60	4	2	8	4	8	R2A	6-1	TGK12 included	TM860RCUGEN

Twist lock power inlets

Receptacles	Amps	Volts	UL	Ordering code
L14-20	20	120/240	Canada, US	T020N
L14-30	30	120/240	Canada, US	T030N
CS637	50	120/240	Canada, US	T050N

NOTE: Circuit breakers must be ordered separately. [Click here.](#)

ReliaHome riser panels

Table of contents

ReliaHome riser panels	
Product overview	1-36
Indoor (NEMA 1) enclosure	1-36

ReliaHome riser panels



The ReliaHome riser panels are designed with an offset interior, enabling riser cables to go through the larger gutter to the side of the interior. Typical applications include multi-story buildings such as apartments, condominiums, and dormitories. The gutter tap kits allow the installer to easily tap off of the riser cables to the riser panel's main lugs.

Features

- Single phase, three-wire, 120/240 V AC
- Offset interior allowing 4 5/8 inches of gutter space to allow use of tap kits, (1) tap kit per phase
- Interior mounting allows either gutter location, left or right side
- Accepts 22kAIC rated main breaker, series rated 22/10

P-Series riser panel

Amperage rating	1 pole 1" spaces	Max single pole circuits	NEMA 1 indoor	NEMA 1 indoor white
125	12	24	PAC1212M	PAC1212MW
	20	40	PAC2012M	PAC2012MW
200	30	60	PAC3020M	PAC3020MW

NOTE: Circuit breakers must be ordered separately. [Click here.](#)

ReliaHome pool and spa panels

Table of contents

ReliaHome pool and spa panels	
Product overview	1-38
Outdoor (NEMA 3R) enclosure	1-38

ReliaHome pool and spa panels



GFCI ReliaHome pool and spa panels supply power and protect a spa, pool, or any other outdoor area simply and economically. They feature ground fault circuit interrupter (GFCI) for maximum protection, and provide spaces for up to four additional circuit breakers. Moreover, GFCI ReliaHome pool and spa panels come with factory-installed neutral and ground bars along with a raintight hub for either top or bottom-feed.

Features

- Single-phase, three-wire, 120/240 V AC
- Expandable with up to four additional circuits
- Two versions: 50A or 60A 2-pole GFCI circuit breaker installed
- Factory-installed neutral and ground bar included
- Bottom or top feed (raintight hub included)
- Equipment ground kit installed

Outdoor (NEMA 3R) enclosure, top/bottom feed

Main ampere rating	1 pole, 1" spaces	2 pole, 1" spaces	1 pole, 1/2" spaces	2 pole, 1/2" spaces	Total 1-pole spaces	Max single pole circuits	Load center type	Box number	Main wire size (AWG/kcmil) Cu-Al	Equipment ground kit	Ordering code
125	4	2	8	4	8	8	Factory Included 50A GFCI	-	1-2/0	TGL1 installed	TL412R250GF
	4	2	8	4	8	8	Factory Included 60A GFCI	-	1-2/0	TGL1 installed	TL412R260GF

NOTE: Circuit breakers must be ordered separately. [Click here.](#)

ReliaHome circuit breakers

Table of contents

ReliaHome circuit breakers	
Product overview	1-40
Ordering code construction	1-40
Q-Line plug-in residential circuit breakers	1-41
Arc fault circuit interrupter (AFCI)	1-43
Dual function (DFCI/AFCI) ground fault & combination arc fault circuit breaker	1-43
Ground fault with self-test feature circuit breaker	1-43
Ground fault with equipment protection	1-44
Switching neutral circuit breakers	1-44
HID lighting circuit breakers	1-44
High magnetic circuit breakers	1-44
Molded case switches	1-45
Interlocking circuit breakers for use in ReliaHome generator panels	1-45
THQL circuit breakers with factory installed shunt	1-45
THQL circuit breakers, internal common trip with factory installed shunt	1-45

ReliaHome circuit breakers

Product overview



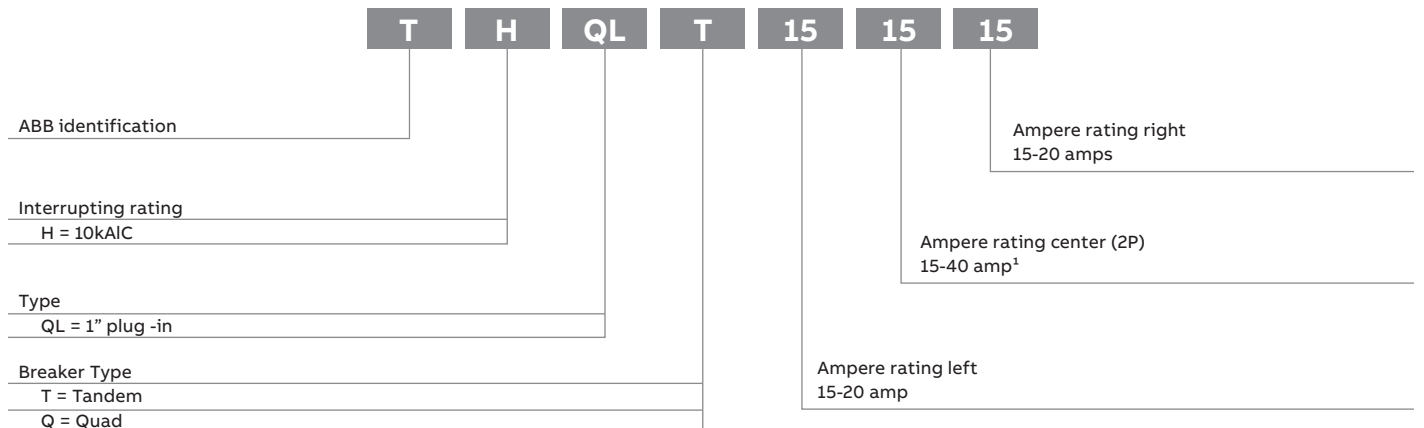
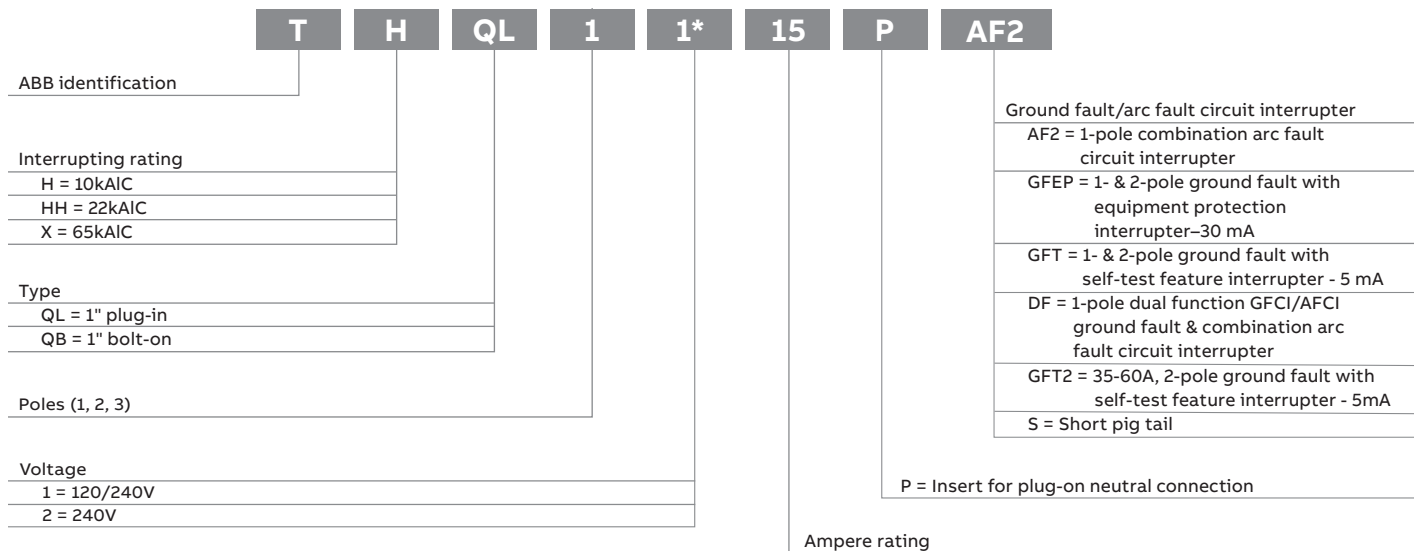
A full range of ReliaHome circuit breakers to fit almost any application.

Features

- Plug-on, short-pigtail, and long pigtail neutral options.
- Unique sizing as narrow as 1/2"
- Arc-Fault Circuit Interrupter (AFCI) can detect and interrupt arcing caused by damaged wire insulation or a frayed extension cord.

- Ground Fault Circuit Interrupter (GFCI)
- The NEC requires ground fault protection of receptacles outdoors and in garages, bathrooms, and spa areas.
- Dual Function Circuit Interrupter (DFCI) combine the functions of both the
- AFCI and GFCI circuit breakers in a cost effective and simple package.

Ordering code construction



¹Does not apply for Tandem breakers.

ReliaHome circuit breakers

Q-Line plug-in residential circuit breakers

Features

- UL Listed (Molded case circuit breakers no. 489)
- Federal government specification qualified (WC-375B)
- 60°C / 75°C conductor rating
- Quick make, quick break
- Box type terminals



THQL1120



THQL2140



THQL32015

Q-Line plug-in circuit breakers specifications

Breaker type	Ampere rating	Wire size AWG/kcmil ¹	
		Cu	Al
THQL	15-30	14-8	12-8
THHQL	35-60	8-3	8-3
TXQL	70-100	6-1/0	4-1/0
	110-125	2-2/0	2-2/0

¹ Solid or stranded for 14-10 AWG

Q-line plug-in circuit breakers, UL489

120/240 Vac Ampere rating	Type THQL 1-inch module		Type THHQL 1-inch module			22,000AIC	65,000AIC
	120/240 Vac	240 Vac	120/240 Vac	120/240 Vac ²	240 Vac	Type TXQL 1-inch module 120/240 Vac	Ordering code
	Ordering code	Ordering code	Ordering code	Ordering code	Ordering code		
Single pole³							
15 ⁴	THQL1115	-	THHQL1115	-	-	-	TXQL1115
20 ⁴	THQL1120	-	THHQL1120	-	-	-	TXQL1120
30	THQL1130	-	THHQL1130	-	-	-	TXQL1130
35	THQL1135	-	THHQL1135	-	-	-	-
40	THQL1140	-	THHQL1140	-	-	-	-
45	THQL1145	-	THHQL1145	-	-	-	-
50	THQL1150	-	THHQL1150	-	-	-	-
60	THQL1160	-	THHQL1160	-	-	-	-
Std. Pkg.	5 cartons of 10		5 cartons of 10				5 cartons of 10

Two-pole⁵: Incorporates internal common trip bar

15	THQL2115	THQL22015 ⁶	THHQL2115	-	THHQL22015 ⁶	TXQL2115
20	THQL2120	THQL22020 ⁶	THHQL2120	-	THHQL22020 ⁶	TXQL2120
25	THQL2125	THQL22025 ⁶	THHQL2125	-	THHQL22025 ⁶	TXQL2125
30	THQL2130	THQL22030 ⁶	THHQL2130	-	THHQL22030 ⁶	TXQL2130
35	THQL2135	THQL22035 ⁶	THHQL2135	-	THHQL22035 ⁶	-
40	THQL2140	THQL22040 ⁶	THHQL2140	THHQL2140RM	THHQL22040 ⁶	-
45	THQL2145	THQL22045 ⁶	THHQL2145	-	THHQL22045 ⁶	-
50	THQL2150	THQL22050 ⁶	THHQL2150	THHQL2150RM	THHQL22050 ⁶	-
60	THQL2160	THQL22060 ⁶	THHQL2160	THHQL2160RM	THHQL22060 ⁶	-
70	THQL2170	THQL22070 ⁶	THHQL2170	THHQL2170RM	THHQL22070 ⁶	-
80	THQL2180	THQL22080 ⁶	THHQL2180	THHQL2180RM	THHQL22080 ⁶	-
90	THQL2190	THQL22090 ⁶	THHQL2190	THHQL2190RM	THHQL22090 ⁶	-
100	THQL21100	THQL22100 ⁶	THHQL21100	THHQL21100RM	THHQL22100 ⁶	-
110	THQL21110	-	THHQL21110	THHQL21110RM	-	-
125	THQL21125	-	THHQL21125	THHQL21125RM	-	-
Std. pkg.	5 cartons of 5		5 cartons of 5		5 cartons of 5	5 cartons of 5

Three-pole⁶: Incorporates internal common trip bar

15	-	THQL32015	-	-	THHQL32015	TXQL32015
20	-	THQL32020	-	-	THHQL32020	TXQL32020
25	-	THQL32025	-	-	THHQL32025	TXQL32025
30	-	THQL32030	-	-	THHQL32030	TXQL32030
35	-	THQL32035	-	-	THHQL32035	-
40	-	THQL32040	-	-	THHQL32040	-
45	-	THQL32045	-	-	THHQL32045	-
50	-	THQL32050	-	-	THHQL32050	-
60	-	THQL32060	-	-	THHQL32060	-
70	-	THQL32070	-	-	THHQL32070	-
80	-	THQL32080	-	-	THHQL32080	-
90	-	THQL32090	-	-	THHQL32090	-
100	-	THQL32100	-	-	THHQL32100	-
Std. pkg.		5 cartons of 3			5 cartons of 3	5 cartons of 3

² Breaker primarily used for ReliaMod series rating capability

³ UL Listed as HACR (heating, air conditioning and refrigeration).

⁴ UL Listed as SWD (switching duty). Suitable for 120 volts ac fluorescent lighting loads.

⁵ 15-100 amp UL Listed as HACR (heating air conditioning and refrigeration).

⁶ Required for three-phase and High Leg Delta Systems only.

ReliaHome circuit breakers

Q-line plug-in residential circuit breakers

Features

- Rated for use on Single Phase 120/240 VAC systems
- 60°C/75°C conductor rating
- HACR and SWD rating
- UL Listed (Molded case circuit breakers no. 489)
- Protection up to 10,000 amps of available fault current



THQLT1515



THQLQ154015

Tandem and Quad circuit breaker, UL489

Ampere rating			1" space used		2" space used	
			(2) 1 poles, 120/240 VAC		(2) 1 poles and (1) 2 pole, 120/240 VAC	
Right	Center	Left	Ordering code		Ordering code	
10,000 AIC						
15	-	15	THQLT1515		-	
20	-	20	THQLT2020		-	
15	-	20	THQLT1520		-	
15	15	15	-		THQLQ151515	
15	20	15	-		THQLQ152015	
15	30	15	-		THQLQ153015	
15	40	15	-		THQLQ154015	
20	15	20	-		THQLQ201520	
20	20	20	-		THQLQ202020	
20	30	20	-		THQLQ203020	
20	40	20	-		THQLQ204020	
20	30	15	-		THQLQ203015	

ReliaHome circuit breakers

Special purpose circuit breakers

Features

- 60°C / 75°C conductor rating
- Box type terminals
- Quick-make, quick-break
- Multi-pole circuit breakers incorporate internal common trip



THQL1115DF



THQL1115PDF



THQL1115GFT



THQL1115GFTS

Arc fault circuit interrupter (AFCI circuit breaker), UL1699

	Ampere rating	1-pole, 120/240 volts ac ¹	1-pole, 120/240 volts ac	1-pole, 120/240 volts ac
		Ordering code	Ordering code	Ordering code
		Long pig tail	Short pig tail	Plug-on neutral
10,000 AIC				
	15	THQL1115AF2	THQL1115AF2S	THQL1115PAF2
	20	THQL1120AF2	THQL1120AF2S	THQL1120PAF2
22,000 AIC				
	15	THHQL1115AF2	-	THHQL1115PAF2
	20	THHQL1120AF2	-	THHQL1120PAF2
Std. pkg.		10 cartons of 1	-	-

¹ Combination AFCI compliant with 2008 NEC™ and later

² For 2-Pole shared neutral applications use two 1-pole circuit breakers with a handle tie. See DET-719 for more details on our Arc Fault products.

Dual function (DFCI/AFCI) ground fault & combination arc fault circuit breaker

	Ampere rating	1-pole, 120 volts ac	1-pole, 120 volts ac	1-pole, 120 volts ac
		Ordering code	Ordering code	Ordering code
		Long pig tail	Short pig tail	Plug-on neutral
10,000 AIC				
	15	THQL1115DF	THQL1115DFS	THQL1115PDF
	20	THQL1120DF	THQL1120DFS	THQL1120PDF
22,000 AIC				
	15	THHQL1115DF	-	THHQL1115PDF
	20	THHQL1120DF	-	THHQL1120PDF
Std. pkg.		10 cartons of 1	-	-

Ground fault with self-test feature circuit breaker, UL943 ed5 (5ma)

	Ampere rating	1-pole, 120 volts ac	1-pole, 120 volts ac	1-pole, 120 volts ac	2-pole, 120/240 volts ac	2-pole, 120/240 volts ac
		Ordering code	Ordering code	Ordering code	Ordering code	Ordering code
		Long pig tail	Short pig tail	Plug-on neutral	Long pig tail	Plug-on neutral
10,000 AIC						
	15	THQL1115GFT	THQL1115GFTS	THQL1115PGFT	THQL2115GFT	THQL2115PGFT
	20	THQL1120GFT	THQL1120GFTS	THQL1120PGFT	THQL2120GFT	THQL2120PGFT
	25	THQL1125GFT	-	THQL1125PGFT	THQL2125GFT	THQL2125PGFT
	30	THQL1130GFT	-	THQL1130PGFT	THQL2130GFT	THQL2130PGFT
	35	-	-	-	THQL2135GFT2	-
	40	-	-	-	THQL2140GFT2	-
	45	-	-	-	THQL2145GFT2	-
	50	-	-	-	THQL2150GFT2	-
	60	-	-	-	THQL2160GFT2	-
22,000 AIC						
	15	THHQL1115GFT	-	THHQL1115PGFT	THHQL2115GFT	THHQL2115PGFT
	20	THHQL1120GFT	-	THHQL1120PGFT	THHQL2120GFT	THHQL2120PGFT
	25	THHQL1125GFT	-	THHQL1125PGFT	THHQL2125GFT	THHQL2125PGFT
	30	THHQL1130GFT	-	THHQL1130PGFT	THHQL2130GFT	THHQL2130PGFT
Std. pkg.		10 cartons of 1	-	-	-	-

ReliaHome circuit breakers

Special purpose circuit breakers



THQL2115GFEP

Ground fault with equipment protection circuit breaker, UL1053 (30 ma)

	Ampere rating	1-pole, 120 volts ac	2-pole, 120/240 volts ac
		Ordering code	Ordering code
10,000 AIC			
	15	THQL1115GFEP	THQL2115GFEP
	20	THQL1120GFEP	THQL2120GFEP
	30	THQL1130GFEP	THQL2130GFEP
22,000 AIC			
	15	THHQL1115GFEP	THHQL2115GFEP
	20	THHQL1120GFEP	THHQL2120GFEP
	30	THHQL1130GFEP	THHQL2130GFEP
Std. pkg.		10 cartons of 1	10 cartons of 1



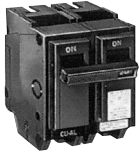
THQL21WY30

Switching neutral circuit breakers

UL Listed. 10kAIC RMS symmetrical.

Standard 1- or 2-pole automatic circuit breaker plus one fully-rated, non-automatic pole.

	Ampere rating	1-pole plus switching neutral 120/240 volts ac	2-pole plus switching neutral 120/240 volts ac
		Ordering code	Ordering code
10,000 AIC			
	15	THQL21WY15	THQL31WY15
	20	THQL21WY20	THQL31WY20
	25	THQL21WY25	THQL31WY25
	30	THQL21WY30	THQL31WY30
Std. pkg.		5 cartons of 5	5 cartons of 3



THQL2120HID

HID lighting circuit breakers

UL Listed as HID. HID breakers have been designed to handle the current and voltage spikes that result when gaseous discharge lamps, including fluorescent and HID lamps, are switched on and off.

	Ampere rating	1-pole, 120/240 volts ac	2-pole, 120/240 volts ac
		Ordering code	Ordering code
10,000 AIC			
	15	THQL1115HID ¹	THQL2115HID
	20	THQL1120HID ¹	THQL2120HID
	30	THQL1130HID	THQL2130HID
22,000 AIC			
	15	THHQL1115HID ¹	THHQL2115HID
	20	THHQL1120HID ¹	THHQL2120HID
	30	THHQL1130HID	THHQL2130HID
Std. pkg.		5 cartons of 10	5 cartons of 5

¹UL Listed as SWD (switching duty). Suitable for 120 volts ac fluorescent lighting loads.



THQL1140HM

High magnetic circuit breakers

UL Listed. 10kAIC RMS symmetrical

High short circuit setting suitable for circuits with inherent high-inrush load currents.

	Ampere rating	1 pole, 120 volts ac
		Ordering code
	15	THQL1115HM
	20	THQL1120HM
	25	THQL1125HM
	30	THQL1130HM
	40	THQL1140HM
	50	THQL1150HM
Std. pkg.		5 cartons of 10

ReliaHome circuit breakers

Special purpose switches and circuit breakers



TQL21Y100

Molded case switches

UL Listed
Without overload or short circuit protection.

	Ampere rating	2-pole	3-pole
		Ordering code	Ordering code
120/240 Volts ac			
	60	TQL21Y60	-
	100	TQL21Y100	-
240 Volts ac			
	60	TQL22Y60	TQL32Y60
	100	TQL22Y100	TQL32Y100
Std. pkg.		5 cartons of 5	5 cartons of 3



THQL1130ST1

Interlocking circuit breakers for use in ReliaHome generator panels

Two circuit breakers required for interlocking.

Poles	Ampere rating	Ordering code
2	30	THQL2130GEN
2	60	THQL2160GEN



THQL2120ST1

THQL circuit breakers with factory installed shunt trip¹

# of poles	Ampere rating	Wire range ²	120/240 Vac Interrupting rating	Ordering code
1	15	(1) 14-8 Cu/12-8 Al	10kA	THQL1115ST1
1	20	(1) 14-8 Cu/12-8 Al	10kA	THQL1120ST1
1	30	(1) 14-8 Cu/12-8 Al	10kA	THQL1130ST1
1	35	(1) 8-3 Cu/8-3 Al	10kA	THQL1135ST1

¹ Shunt trip requires one additional pole of space.



THQL32020ST1

THQL circuit breakers, internal common trip with factory installed shunt trip¹

# of poles	Ampere rating	Wire range ²	120/240 Vac Interrupting rating	Ordering code
2	15	14-8 Cu/12-8 Al	10kA	THQL2115ST1
2	20	14-8 Cu/12-8 Al	10kA	THQL2120ST1
2	30	14-8 Cu/12-8 Al	10kA	THQL2130ST1
2	35	8-3 Cu/8-3 Al	10kA	THQL2135ST1
2	40	8-3 Cu/8-3 Al	10kA	THQL2140ST1
2	45	8-3 Cu/8-3 Al	10kA	THQL2145ST1
2	50	8-3 Cu/8-3 Al	10kA	THQL2150ST1
2	60	8-3 Cu/8-3 Al	10kA	THQL2160ST1
2	70	6-1/0 Cu/4-1/0 Al	10kA	THQL2170ST1
2	80	6-1/0 Cu/4-1/0 Al	10kA	THQL2180ST1
2	90	6-1/0 Cu/4-1/0 Al	10kA	THQL2190ST1
2	100	6-1/0 Cu/4-1/0 Al	10kA	THQL21100ST1
3	20	14-8 Cu/12-8 Al	10kA	THQL32020ST1
3	30	14-8 Cu/12-8 Al	10kA	THQL32030ST1
3	40	8-3 Cu/8-3 Al	10kA	THQL32040ST1
3	50	8-3 Cu/8-3 Al	10kA	THQL32050ST1
3	60	8-3 Cu/8-3 Al	10kA	THQL32060ST1
3	70	6-1/0 Cu/4-1/0 Al	10kA	THQL32070ST1
3	80	6-1/0 Cu/4-1/0 Al	10kA	THQL32080ST1
3	90	6-1/0 Cu/4-1/0 Al	10kA	THQL32090ST1
3	100	6-1/0 Cu/4-1/0 Al	10kA	THQL32100ST1

² Solid or stranded for 14-10 AWG.

ReliaHome circuit breaker accessories

Table of contents

Circuit breaker accessories	
ReliaHome main circuit breaker kits	1-47
Handle locks - Non padlocking	1-48
Handle ties	1-48
TQ circuit breakers	1-48

ReliaHome circuit breaker accessories



THQMV100F with filler plates



THQMV200E



TQMHO00

ReliaHome P-Series/P-Series+ main breaker kit for use in 150A, 200A, & 225A convertible load centers

- Example – PCCXX20 – 200A Convertible load center
- Includes mounting base
- Not for use in 125A and below Convertible load centers (PCCXX12)
- Main Breaker Conversions for 125A load centers - see footnotes for individual ordering code numbers

Description	Ampere rating	Ordering code	Lug size
Main circuit breaker kits 22,000 AIC	100	THQMV100F	1-300 (cu), 2/0-300
	125	THQMV125F	
	150	THQMV150F	
	175	THQMV175F	
	200	THQMV200F	
	225	THQMV225F	

Note: Wire bending rules affect allowed wire sizes when THQMV breakers are installed in an enclosure. For load centers, the wire range will be on the rating label. In addition, refer to the specifications for the main breaker versions of the load center you are considering to review allowed wire ranges when a PCCXX20 load center is converted to main breaker.

ReliaHome P-Series/P-Series+ main breaker kit

For use with 125A P-series and P-series+ load Centers; 22kAIC RMS symmetrical

Description	Ordering code
Main Circuit Breaker Kit - Order appropriate THQL 10kAIC or THHQL 22kAIC breakers separately. Includes service barriers for use with THQL or THHQL main.	TQMH000F ¹
	THQMH100F ²
	THQMH125F ³

Note: Please review the footnotes listed with the individual Load Center ordering codes for proper parts needed to convert to a main circuit breaker. This main breaker base is only applicable for all 125A ReliaHome convertible load centers.

¹TQMH000F comes with the mounting base only and breaker must be ordered separately at desired amperage.

²THQMH100F comes with a factory installed 100A THHQL breaker.

³THQMH125F comes with a factory installed 125A THHQL breaker.

ReliaHome main circuit breaker kit

For use with 125A ReliaHome T-Series and legacy PowerMark Gold and PRO load centers; 22kAIC RMS symmetrical.

Description	Ordering code
Main Circuit Breaker Kit - Order appropriate THQL 10kAIC or THHQL 22kAIC breakers separately. Includes service barriers for use with THQL or THHQL main.	TQMHO00 ²

² Please review the footnotes listed with the individual Load Center ordering codes for proper parts needed to convert to a main circuit breaker. This main breaker base is only applicable for 16 circuit and larger 125 amp load centers, the TLM812RCU2, and all 125A ReliaHome convertible load centers.

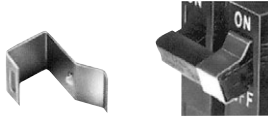
ReliaHome T-Series and legacy PowerMark Gold and PRO main circuit breaker kit for use in 150A, 200A, & 225A convertible load centers

- Example - TLMXX20CCU - 200A Convertible Load Center
- Includes mounting base
- Not for use in 125A and below Convertible Load Centers (TLMXX12CCU)
- Main Breaker Conversions for 125A load centers - see footnotes for individual catalog numbers

Description	Ampere rating	Ordering code	Lug size
Main circuit breaker kits 22,000 AIC	100	THQMV100E	1-300 (cu), 2/0-300
	125	THQMV125E	
	150	THQMV150E	
	175	THQMV175E	
	200	THQMV200E	
	225	THQMV225E	

Note: Wire bending rules affect allowed wire sizes when THQMV breakers are installed in an enclosure. For load centers, the wire range will be on the rating label. In addition, refer to the specifications for the main breaker versions of the load center you are considering to review allowed wire ranges when a TLMXX20 load center is converted to main breaker.

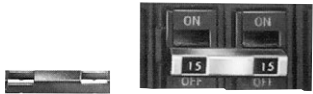
ReliaHome circuit breaker accessories



THL103



TQHT1



THT104



TQ1120



TQ2120

Handle locks - Non padlocking

Description	Breaker type	Ordering code
THQL non padlocking handle lock	THQL	THL103
Snap on handle lock		

Handle ties

Description	Breaker type	Ordering code
Snap-on handle tie - trip indicating	TQB	TQHT1 ¹
	TQC	
	TQL	
Snap-on handle tie - solid	TQB	THT104 ¹
	TQC	
	TQL	
Multiwire branch breaker handle tie kits	TQB	TQ3HTK ²
	TQC	TQ4HTK ³
	TQL	

All multi-pole breakers have internal common trip
 Handle ties provide manual on-off capability only between one-pole devices
¹For two single-pole breakers
²For three single-pole breakers - kit includes (10) pcs.
³For four single-pole breakers - kit includes (10) pcs.

TQ circuit breakers

3/4" UL Classified Circuit Breakers for use in *Square D **QO Load Centers.
 10 kAIC RMS symmetrical

Ampere rating	1-pole	2-pole
	Ordering code	Ordering code
15	TQ1115	TQ2115
20	TQ1120	TQ2120
30	TQ1130	TQ2130
40	TQ1140	TQ2140
50	TQ1150	TQ2150
60	-	TQ2160
Std. pkg.	1 carton of 10	1 carton of 5

*Square D is a registered trademark of SNA Holdings, Inc. **QO is a registered trademark of the Square D Company.

ReliaHome surge protectors

Table of contents

Surge protectors	
Surge protective device	1-50
Residential surge protective device	1-50

Surge protective devices



THQLSURGE2

Ask an Expert

THQLSURGE2 is a Type 1 plug-on SPD that helps protect entire homes or offices' electronics and appliances against damaging power surges. It can be installed at service entrances, subpanel locations, or inside PowerMark™ PRO load centers, providing surge protection for the entire panel and all attached loads. THQLSURGE2 is reliable, compact, and easy to install.

Features & Benefits

- Type 1 SPD
- Simple plug-on design
- LED light indicating proper functioning
- Compatible with PowerMark™ PRO load centers
- Meets the surge requirements of NEC 2023 Art.230.67
- 3-year, up to \$25,000 connected equipment warranty valid in the U.S.

THQLSURGE2 helps you comply with NEC Art.230.67 surge protection requirements for new home construction or renovation.



THOMESURGE

Ask an Expert

The SurgePro™ THOMESURGE is a Type 1 SPD designed for external mounting with PowerMark or load centers of any brand used in service entrance or sub-panel locations. SurgePro provides immediate and reliable protection for sensitive electronics and appliances within the entire home.

Features & Benefits

- Type 1 SPD
- Installs in load centers of any brand
- 3-year, \$25,000 connected equipment warranty
- Protects sensitive electronics throughout the entire home
- LED light indicates the operational status of the SPD

SurgePro helps you comply with NEC Art.230.67 surge protection requirements for new home construction or renovation.

Surge protectors, NEMA Type 1

Description	System voltage	Per phase surge rating	Short circuit rating	Nominal discharge rating	Ordering code
SurgePro panel mounted	120/240 VAC	25KA	200 kA	10 kA	THQLSURGE2
SurgePro externally mounted	120/240 VAC	36 kA	200 kA	10 kA	THOMESURGE

ReliaHome enclosed circuit breakers

Table of contents

Residential enclosed circuit breakers

Outdoor enclosed circuit breakers

1-52

ReliaHome enclosed circuit breakers



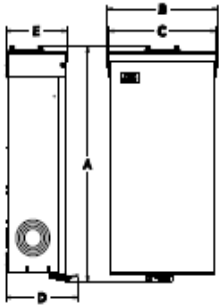
ABB's residential enclosed circuit breakers are a quick and efficient way to provide outdoor disconnecting means at a home or dwelling. These outdoor, NEMA 3R rated enclosed circuit breakers meet the NEC 2020 and 2023 requirement for an emergency outdoor disconnect. Ranging from 100A to 200A (100A, 125A, 150A, and 200) and AIC rating of either 10 or 22 kAIC, these devices are a great option for many residential applications.

Features

- Convenient factory-installed main circuit breaker
- Corrosion-resistant outdoor (NEMA 3R) enclosure
- Reliable 2 pole circuit breakers
- Service entrance rated UL
- Neutral included
- Ampere rating 100, 125, 150, 200
- Short circuit ratings: 10kAIC for 100A and 125A, 22kAIC for 150A and 200A
- NEMA 3R

Certifications and standards

- UL listed - Suitable for use as service equipment
- NEC 2020, NEC 2023



Outdoor (NEMA 3R) enclosure, 2 pole, service entrance rated, UL/cUL, neutral included

Main ampere rating	Short circuit rating (kAIC)	Main wire size (AWG/kcmil) Cu-Al	Equipment ground kit	Ordering code	Dimension A (in.)	Dimension B (in.)	Dimension C (in.)	Dimension D (in.)	Dimension E (in.)
100	10	(1) #4-1/0	TGL1 (order separately)	TQL100RE ¹	17	7.25	6.875	6	5
125	10	(1) #2-2/0	TGL1 (order separately)	TQL125RE ¹	18.313	7.688	7.5	6.313	5.188
150	22	(1) #6-350	TGL1 (order separately)	THQMV150NRE	18.813	9.5	9.313	5.5	4.875
200	22	(1) #6-350	TGL1 (order separately)	THQMV200NRE	18.813	9.5	9.313	5.5	4.875

¹cUL listed - Suitable for use as service equipment

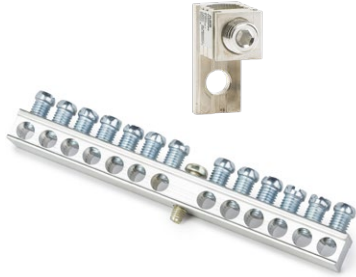
NEMA Type 3R
Outdoor enclosure

ReliaHome field installed accessories

Table of contents

ReliaHome field installed accessories	
ReliaHome load center accessories	1-54
ReliaHome neutral kits	1-55
ReliaHome neutral/ground lug kits	1-55
Isolated ground bus bars equipment ground kit	1-55
Subfeed lug kits	1-55
ReliaHome main lug kits	1-56
Door lock	1-56
Circuit directory	1-56
Touch-up paint	1-56
Front filler plates	1-57
Universal raintight hubs	1-57
Door handle	1-57
ReliaHome cross arm	1-57
ReliaHome main breaker retainers	1-58
Handle locks, padlocking	1-58
Service barrier kits	1-59
Load center hardware kits	1-59
Generator interlock kits	1-60
ReliaHome auxiliary gutter enclosures	1-60
ReliaHome gutter tap kits	1-60
Meter combos flange kits	1-60

ReliaHome field installed accessories



A full line of field installable load center accessories helps you create the perfect load center for every application.

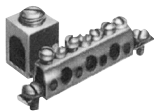
ReliaHome load center accessories

Description	Ordering code
ReliaHome bonding screw kit	PBS
ReliaHome bonding strap 225A	PBS22
ReliaHome PCARE kit contains (20) PBS bonding screws, (20) front screws	PCARE
ReliaHome PHDWRKIT contains (20) front screws	PHDWRKIT
ReliaHome large neutral extension ¹ (12 additional neutral spaces)	PNEUEXTLG
ReliaHome small neutral extension ¹ (8 additional neutral spaces)	PNEUXTSM
ReliaHome PSCOVERWH contains (6) white covers per bag	PSCOVERWH

¹One space on the neutral extension and one space on the factory installed neutral bar is sacrificed for the required jumper



TGL2



TGL20 combined with TGL1

ReliaHome equipment grounds

Description	Standard package quantity	Ordering code
(4) 14-8Cu/12-8AL, (3) 14-4Cu/6-4AL	20	TGL1
(11) 14-8Cu/12-8AL, (3) 14-4Cu/6-4AL	20	TGL2 ¹
(7) 14-8Cu/12-8AL, (3) 14-4Cu/6-4AL, (2) 14-4Cu/12-4AL, (1) 14-2Cu/AL	20	TGL8 ¹
(1) 6-2/0Cu/Al number of terminals, equipment ground kits	20	TGL20 ²
(3) 10-1/0 Cu/Al number of terminals for 400 and 600 Amp	1	TNG3 ³
(6) 10-1/0 Cu/Al number of terminals for 400 and 600 Amp	1	TNG6 ⁴

¹ TGL2, TGL4 and TGL8 mount interchangeably

² Add-on Equipment Ground Lug (for use on any TGL Kit)

³ Suitable for use with up to six TPLUG108 lugs or six crimp lugs per pole



TGK12



TGK12 with TGKIS

ReliaHome equipment ground and isolated ground bar kits^{4,5}

Description	Wire range	Standard package quantity	Ordering code
4-hole ground	(1) 14-4	1	TGK4
8-hole ground	(1) 14-4	1	TGK8
12-hole ground	(1) 14-4	1	TGK12
22-hole ground	(1) 14-4	1	TGK24
32-hole ground	(1) 14-4	1	TGK32
42-hole ground	(1) 14-4	1	TGK42

⁴ 6-12 circuit indoor load centers use PowerMark Plus style neutrals and grounds

⁵ Add TGKIS for isolated ground and mount to ground kit.

ReliaHome field installed accessories



192A7663G13



286A8894G1



TNLK250



TLK20



TLK250



TGK12 with TGKIS

ReliaHome[®] neutral kits

Description	Wire range	Standard package quantity	Ordering code
400 & 600 Amp ReliaHome Neutral Kit	(5) 14-1/0	1	TNLK1 ¹
400 & 600 Amp ReliaHome Neutral Kit	(3) 1-300	1	TNLK2 ¹
Add-on neutral lug for 100-200 Amp ReliaHome load centers	6-2/0	1	286A8894G1
Add-on neutral lug for 100-200 Amp ReliaHome load centers	1-300 Cu or 2/0-300 Al	1	192A7663G13

¹Suitable for use with up to six TPLUG108 lugs or six crimp lugs per pole

ReliaHome[®] neutral/ground lug kits (top mount)

Description	Wire range	Standard package quantity	Ordering code
ReliaHome neutral/ground lug kit (top mount on neutral bar or ground bar)	6-2/0	1	TNLK20
ReliaHome neutral/ground lug kit (top mount on neutral bar or ground bar)	1-300	1	TNLK250

ReliaHome[®] neutral/ground lug kits (side mount)

Mounted on any neutral or ground position by removing the termination screw

Description	Wire range	Standard package quantity	Ordering code
Neutral/ground lug kit (Side mount on neutral bar or ground bar)	6-2/0	1	TLK20
Neutral/ground lug kit (Side mount on neutral bar or ground bar)	6-250	1	TLK250
Neutral/ground lug kit (Side mount on neutral bar or ground bar)	6-300	1	TLK300

² Compatible with legacy PowerMark Gold and PRO

Isolated ground bus bars equipment ground kit

Description	Standard package quantity	Ordering code
Isolated ground bar kit (order with TGK equipment ground kits)	1	TGKIS
Isolated ground bar feet (order with TGK8)	1	TGKIS2

Subfeed lug kits

Description	Standard package quantity	Ordering code
125A 2 pole plug-in	1	THLK2125
150A 2 pole plug-in - For use with ReliaHome only	1	THLK2150
200A 2 pole plug-in - For use with ReliaHome only	1	THLK2200
125A 3 pole plug-in - For use with 3 phase only	1	THLK3125
225A 3 pole plug-in - For use with 3 phase only	1	THLK3225

ReliaHome field installed accessories



TMLK200

ReliaHome¹ main lug kits

Description	Wire range (Cu/Al)	Ordering code
125 Amp ReliaHome replacement main lug kit	6-2/0	TMLK125
200 Amp ReliaHome replacement main lug kit	6-250	TMLK200
225 Amp ReliaHome replacement main lug kit	6-300	TMLK225

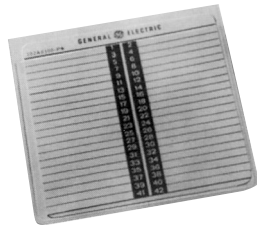
For replacement of main lugs on ABB MLO load centers. TLM, PLM, PAL, PCC load centers include main lugs factory installed.
¹Compatible with legacy PowerMark Gold and PRO



TDL106

Door lock

Description	Standard package quantity	Ordering code
For indoor load centers larger than 12 circuits (Does not fit TPL412)	10	TDL106



TD42

Circuit directory

Description	Standard package quantity	Ordering code
ReliaHome circuit directory	1	PD60



TSP61

Touch-up paint

Description	Standard package quantity	Ordering code
12 3/4 oz. spray can of light gray enamel	1	TSP61



TLABELSDBP

Service disconnect label

Description	Standard package quantity	Ordering code
Emergency service disconnect label kit	10	TLABELSDBP

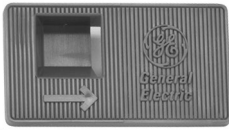
ReliaHome field installed accessories



TFH



TC150



TRL22



LCCROSSARM

Front filler plates

Description	Standard package quantity	Ordering code
1/2" front filler plate	100	TFH
1" front filler plate	1	TQLFP1

Covers 1/2" rectangular breaker knockouts
Covers 1" rectangular breaker knockouts

Universal raintight hubs

Description	Base size (in.)	Standard package quantity	Ordering code
3/4" diameter	3	10	TC75
1" diameter	3	10	TC100
1-1/4" diameter	3	10	TC125
1-1/2" diameter	3	10	TC150
2" diameter	3	10	TC200
2-1/2" diameter	3	10	TC250
3" diameter	3	5	TC300
Closing cap	3	10	TCCP
2" diameter	4	-	TCU27 ¹
2-1/2" diameter	4	-	TCU28 ¹
3" diameter	4	-	TCU30 ¹
3-1/2" diameter	4	-	TCU35 ¹
4" diameter	4	-	TCU40 ¹
4" cover plate	4	-	TCUP ¹

¹For 40 and 42 circuit units in R8 boxes only.

Door handle

Description	Standard package quantity	Ordering code
ReliaHome gray door handle	1	PLTCHGR
ReliaHome white door handle	1	PLTCHWH
Replacement PowerMark Gold or PowerMark Pro door handle universal	1	TRL22

Legacy PowerMark Gold load center cross arm

Description	Standard package quantity	Ordering code
Replacement cross arm for PowerMark Gold load centers only	1	LCCROSSARM

ReliaHome field installed accessories



THQLRK



THQLRK2



THQLRK1



THQLRK3



THQLRK4

ReliaHome main breaker retainers

- Includes service barriers for use with THQL main
- Main Breaker Retainer Kits are UL listed (Panelboards No. 67)

Description	Breaker type	Ordering code
For use on ReliaHome 3-phase load centers with THQL breakers 100A 3P Max	THQL	THQLRK
For use with 12 - 42 circuit ReliaHome ¹ load centers with THQL Breakers	THQL	THQLRK1
For use with 6 - 8 circuit ReliaHome T-Series load centers with THQL breakers	THQL	THQLRK2
For use with ReliaHome TLMQ1412XXX convertible load centers	THQL	THQLRK3
For use with 6 - 42 circuit ReliaHome ¹ load centers with THQL Breakers. Similar to THQLRK1 but it does not take up a breaker space.	THQL	THQLRK4

For main lug load centers utilizing a back fed branch circuit breaker as a main circuit breaker

¹Compatible with legacy PowerMark Gold

Handle locks - Padlocking

Description	Breaker type	Ordering code
THQL padlocking handle lock	THQL	THP100
THQL AF, GF, DF padlocking handle lock	THQL AF, DF, GF	THP100E
TQD padlocking handle lock	TQD	TQDPLD1

Snap on handle lock
Padlock not included

ReliaHome field installed accessories



THQLSB



THQMVSBF



TLSB



TQDSB



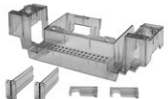
TQDSBR



TQDSFSBP



TSMBSB



TSMLSBB



TSMLSBB2P



TSMLSBBF



TSMLSBSB



TSMLSBBR

Service barrier kits for ReliaHome load centers

- Field installed service barrier kits.
- These kits are normally supplied with service entrance load centers and main circuit breaker kits
- Service Barriers UL listed (Panelboards No. 489) and compliant to UL 67 standards

Description	Ordering code
THQL service barrier	THQLSB
THQMV service barrier flapper	THQMVSBF
2 or 4 circuits service barrier. For use with: TL240RCU, TL240RCUP, TL270RCU, TL270RCUP, TL240SCU, TL240SCUP, TL270SCU, TL270SCUP	TLSB
Formula service barrier - for MOD 2 style MSLCs with A2 main breaker (>100A)	KA2LTC-2
Formula service barrier - for MOD 2 style MSLCs with A1 main breaker (<=100A)	TSBKA1
TQD service barrier - for old MOD 1 style MSLCs	TQDSB
TQD lug service barrier 100-125A Reducer - for old MOD 1 style MSLCs	TQDSBR
TQD/SF service barrier plug - for old MOD 1 style MSLCs	TQDSFSBP

Service barrier kits for ReliaHome meter combos

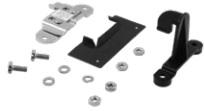
- Field installed service barrier kits.
- These kits are normally supplied with service entrance load centers and main circuit breaker kits
- Service Barriers UL listed (Panelboards No. 489) and compliant to UL 67 standards

Description	Ordering code
Meter combo bus service barrier	TSMBSB
Meter combo lug service barrier	TSMLSBB
Meter combo service barrier 2P module	TSMLSBB2P
Meter combo lug service barrier bus filler	TSMLSBBF
Meter combo lug service barrier shutter	TSMLSBSB
Meter combo lug service barrier reverse feed	TSMLSBBR

Load center hardware kits

Description	Standard Package Quantity	Ordering code
ReliaHome and Gold bond screw kit screw 100 - 200A	1	TBS
ReliaHome and Gold bond screw kit 225A	1	TBS22
ReliaHome and Gold hardware kit containing 20 front mounting screws	1	THDWRKIT
ReliaHome and Gold hardware kit containing 10 interior mounting screws	1	THDWRKIT2
TCARE kit contains (20) TBS parts, (20) THDWRKIT kits and (20) THDWRKIT2 kits	1	TCARE

ReliaHome field installed accessories



THQLLX1



THQLLX4



THQLLX8FL

Generator interlock kit

Description	Standard package quantity	Ordering code
Load center generator interlock kit	1	THQLLX1
Meter combo generator interlock kit	1	THQLLX4
Meter combo generator interlock kit	1	THQLLX8CU
Meter combo generator interlock kit	1	THQLLX8DR ¹
Meter combo generator interlock kit	1	THQLLX8FL
Meter combo generator interlock kit	1	TSDRA2GEN ²

¹Not compatible with meter combos that have a Formula A2 main circuit breaker.

²Compatible with Formula A2 circuit breakers.

PowerMark Gold auxiliary gutter enclosures

Description	Ordering code
24" auxiliary gutter enclosure	TMAGB24
28" auxiliary gutter enclosure	TMAGB28
28" auxiliary gutter enclosure flush	TMAGB28F
33" auxiliary gutter enclosure	TMAGB33
39" auxiliary gutter enclosure	TMAGB39
43" auxiliary gutter enclosure	TMAGB43
43" deep auxiliary gutter enclosure	TMAGB43D

ReliaHome gutter tap kits

Description	Ordering code
250 kcmil Lugs Gutter Tap Kit - 3 kits required per single phase, 4 kits required per three phase application	TMGT250
500 kcmil Lugs Gutter Tap Kit - 3 kits required per single phase, 4 kits required per three phase application	TMGT500
750 kcmil Lugs Gutter Tap Kit - 3 kits required per single phase, 4 kits required per three phase application - Not for use with riser panels	TMGT750

Meter combos flange kits

Description	Ordering code
Semi-flush kit 400A for MSLC	SF400

ReliaHome load centers and meter combos

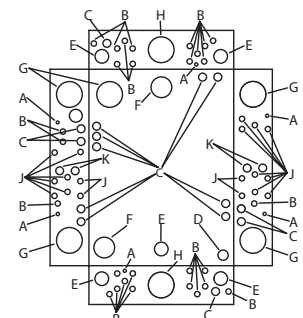
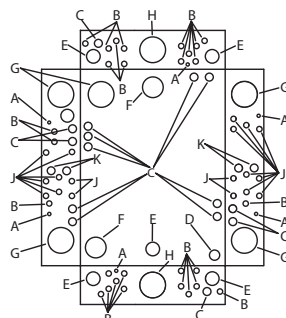
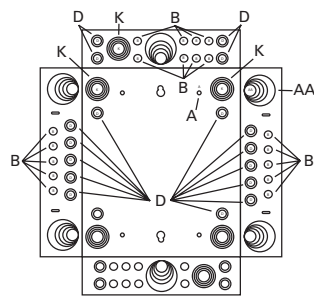
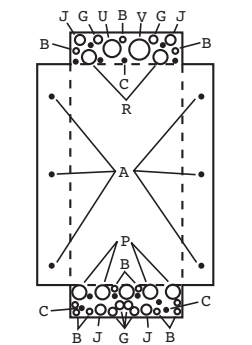
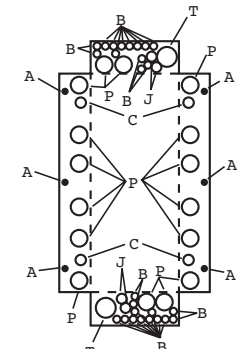
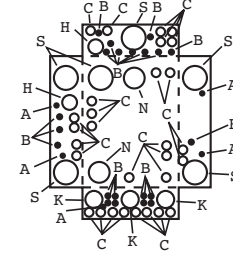
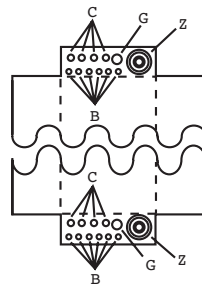
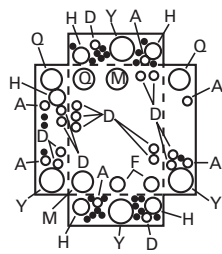
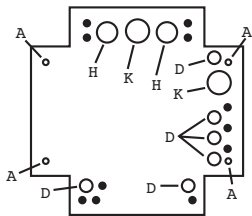
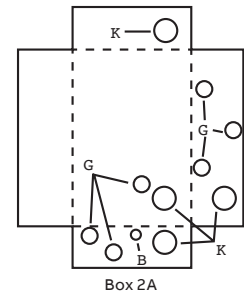
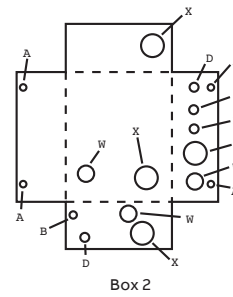
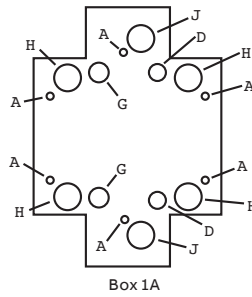
Knockouts

Knockouts

Symbol	A	B	C	D	E	F	G	H	I	J	K	L	M	N	P	Q	R	S	T	U	V	W	X	Y	Z	
Conduit Size in inches	5/16	-	-	-	-	-	-	-	-	-	-	-	-	-	-	-	-	-	-	-	-	-	-	-	-	
	-	3/8	3/8	3/8	3/8	3/8	3/8	-	-	-	-	-	-	-	-	-	-	-	-	-	-	-	-	-	-	
	-	1/2	1/2	1/2	1/2	1/2	1/2	1/2	1/2	1/2	1/2	-	-	-	-	-	-	-	-	-	-	-	-	-	1/2	
	-	-	-	3/4	3/4	3/4	3/4	3/4	3/4	3/4	3/4	-	-	-	-	3/4	-	-	-	3/4	-	-	3/4	-	3/4	3/4
	-	-	-	-	1	1	1	1	1	1	1	1	1	1	1	1	1	1	1	1	1	1	1	1	1	1
	-	-	-	-	-	-	1 1/4	-	1 1/4	1/4	1 1/4	1 1/4	1 1/4	1 1/4	1 1/4	1 1/4	1 1/4	-	1 1/4	1 1/4	-	-	-	1 1/4	1 1/4	-
	-	-	-	-	-	-	1 1/2	1 1/2	1 1/2	-	-	1 1/2	1 1/2	1 1/2	1 1/2	-	1 1/2	1 1/2	1 1/2	-	-	-	-	1 1/2	1 1/2	1 1/2
	-	-	-	-	-	-	-	2	2	-	-	-	-	2	2	2	2	2	2	-	2	2	-	2	2	2
	-	-	-	-	-	-	-	2 1/2	2 1/2	-	-	-	-	-	-	2 1/2	2 1/2	2 1/2	2 1/2	-	2 1/2	2 1/2	-	2 1/2	2 1/2	2 1/2
	-	-	-	-	-	-	-	-	-	-	-	-	-	-	-	-	-	-	-	3	-	3	3	-	-	-
-	-	-	-	-	-	-	-	-	-	-	-	-	-	-	-	-	-	-	3 1/2	3 1/2	3 1/2	-	-	-	-	
-	-	-	-	-	-	-	-	-	-	-	-	-	-	-	-	-	-	-	-	-	4	-	-	-	-	

Dimensions (in inches)

Box No.	Width	Height	Depth
1A	5 11/16	10 1/4	3 3/8
2	7 1/2	9 7/32	3 5/16
2A	7 1/4	9	3
3A	11 9/16	11 3/8	3 3/8
4	14 3/8	19	3 3/4
4A	14 3/8	19	3 3/4
6	14 3/8	23	3 3/4
7	14 3/8	24 11/16	3 3/4
8	14 3/8	26 7/16	3 3/4
9	14 3/8	28 7/16	3 3/4
9A	14 3/8	28 7/16	3 3/4
11	14 3/8	33 3/16	3 3/4
12	14 3/8	35 7/16	3 3/4
12A	14 3/8	37 1/4	4 5/8
13	14 3/8	39 3/16	3 3/4
14	14 3/8	43 7/16	3 3/4
15	14 3/8	43 7/16	4 5/8
15A	14 3/8	44 15/16	4 5/8
16	16	45 1/8	5 13/16
16A	14 3/8	45 3/16	5 3/4
17	20	59 7/8	6 3/32
18	14 3/8	16	3 3/8
19	14 3/8	36 4/5	3 3/4
20	14 3/8	40 5/9	3 3/4



ReliaHome load centers and meter combos

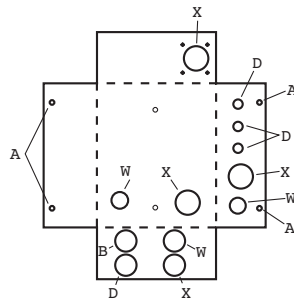
Knockouts

Knockouts

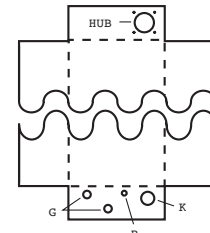
Symbol	A	B	C	D	E	F	G	H	I	J	K	L	M	N	P	Q	R	S	T	U	V	W	X	Y	Z	AA	BB	CC	DD	
	-	-	-	-	-	-	-	-	9/32	-	-	-	-	-	-	-	-	-	-	-	-	-	-	-	-	-	-	-	-	
	-	3/8	-	3/8	-	-	-	-	-	-	-	-	-	-	-	-	-	-	-	-	-	-	-	-	-	-	-	-	-	
	-	1/2	1/2	1/2	1/2	-	1/2	1/2	1/2	-	-	-	-	-	-	-	-	1/2	-	-	-	-	-	-	1/2	-	-	1/2	1/2	
	9/16	-	-	-	-	-	-	-	-	-	-	-	-	-	-	-	-	-	-	-	-	-	-	-	-	-	-	-	-	
Conduit Size in inches	-	-	3/4	3/4	3/4	3/4	3/4	3/4	-	3/4	3/4	-	3/4	3/4	-	3/4	-	3/4	-	-	-	3/4	-	-	3/4	-	3/4	3/4	-	
	-	-	-	-	-	1	1	1	1	1	1	1	1	1	1	1	1	1	1	1	1	1	1	1	1	1	1	1	1	
	-	-	-	-	-	1 1/4	-	1 1/4	-	1 1/4	1 1/4	1 1/4	1 1/4	1 1/4	1 1/4	1 1/4	1 1/4	1 1/4	1 1/4	1 1/4	1 1/4	1 1/4	1 1/4	1 1/4	1 1/4	1 1/4	1 1/4	1 1/4	1 1/4	
	-	-	-	-	-	1 1/2	-	1 1/2	-	1 1/2	1 1/2	1 1/2	1 1/2	1 1/2	1 1/2	1 1/2	1 1/2	1 1/2	1 1/2	1 1/2	1 1/2	1 1/2	1 1/2	1 1/2	1 1/2	1 1/2	1 1/2	1 1/2	1 1/2	
	-	-	-	-	-	-	-	-	-	-	-	2	2	2	2	2	2	2	2	2	2	2	2	2	2	2	2	2	2	2
	-	-	-	-	-	-	-	-	-	-	-	-	-	-	-	2 1/2	2 1/2	2 1/2	2 1/2	2 1/2	2 1/2	2 1/2	2 1/2	2 1/2	2 1/2	2 1/2	2 1/2	2 1/2	2 1/2	2 1/2
	-	-	-	-	-	-	-	-	-	-	-	-	-	-	-	-	-	-	-	3	3	-	-	-	-	3	-	-	-	-
	-	-	-	-	-	-	-	-	-	-	-	-	-	-	-	-	-	-	-	3 1/2	3 1/2	3 1/2	-	-	-	3 1/2	-	-	-	-
	-	-	-	-	-	-	-	-	-	-	-	-	-	-	-	-	-	-	-	-	4	-	-	-	-	-	4	-	-	-

Dimensions (in inches)

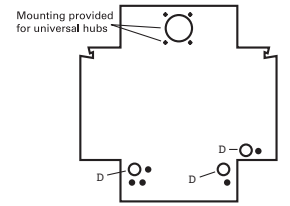
Box No.	Width	Height	Depth
R1	7 1/2	9 7/32	3 5/16
R1A	7 1/4	10	3 3/4
R1B	7 3/8	13	3 3/4
R2A	11 1/4	11 1/8	3 1/4
R3A	13	21 1/2	5
R3	12 1/2	21 3/16	4 5/8
R4A	14 11/16	30 3/16	5 1/4
R4	14	33 3/16	4 5/8
R5A	13	29	5
R5	12 1/2	28 11/16	4 5/8
R6A	13	33	5
R6	14	35 7/16	4 5/8
R7A	14 11/16	34 3/16	5 1/4
R7B	14	37 1/4	4 5/8
R7	14	39 3/16	4 5/8
R8A	14 21/32	43 1/4	6 13/32
R8	14	43 11/16	5 3/4
R8B	14	45 3/16	5 3/4
R9	16	45 15/16	5 27/32
R10	20	48 15/16	6 7/8
R11	20	59 15/16	6 7/8
R41	7 1/2	13 1/4	4



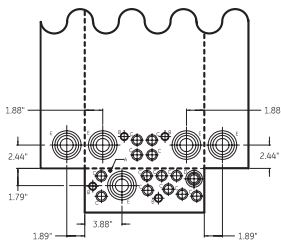
Box R1



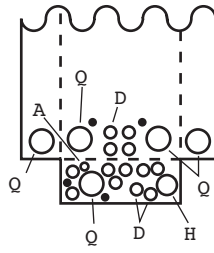
Box R1A



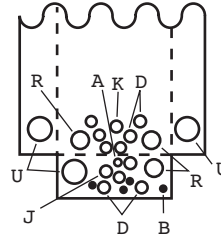
Box R2A



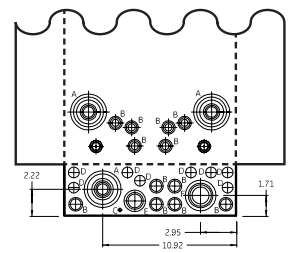
Box R3A, R5A, R6A



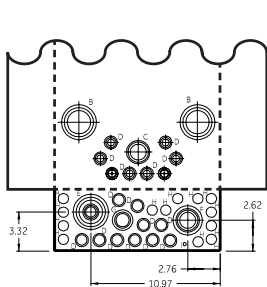
Box R3, R4, R5, R6, R7, R7B



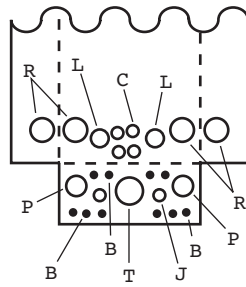
Box R8, R8B



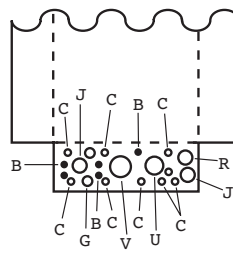
Box R4A, R7A



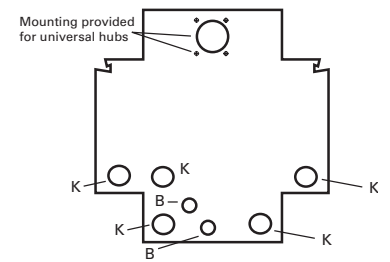
Box R8A



Box R9



Box R10, R11



Box R41

ReliaHome load centers and meter combos

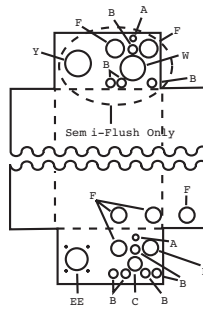
Knockouts

Knockouts

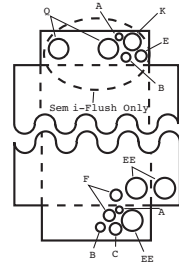
Symbol	A	B	C	D	E	F	G	H	J	K	L	M	N	P	Q	R	S	T	U	V	W	X	Y	Z	AA	BB	CC	DD	EE	FF	
Conduit Size in inches	5/32	-	-	-	-	-	-	-	-	-	-	-	-	-	-	-	-	-	-	-	-	-	-	-	-	-	-	-	-	-	-
	-	3/8	-	3/8	-	-	3/8	-	-	-	-	-	-	-	-	-	-	-	-	-	-	-	-	-	-	-	-	-	-	-	-
	-	1/2	1/2	1/2	1/2	-	1/2	1/2	1/2	-	-	-	-	-	-	-	1/2	-	-	-	-	-	-	-	1/2	-	-	1/2	1/2	1/2	-
	-	-	-	3/4	3/4	3/4	3/4	3/4	3/4	3/4	-	-	-	3/4	-	3/4	3/4	-	-	-	3/4	-	3/4	3/4	-	3/4	3/4	-	3/4	-	-
	-	-	-	-	-	1	1	1	1	1	1	1	1	-	1	1	-	1	-	-	1	-	1	-	-	1	1	-	1	-	-
	-	-	-	-	-	1 1/4	-	1 1/4	1 1/4	1 1/4	1 1/4	1 1/4	1 1/4	1 1/4	1 1/4	1 1/4	-	1 1/4	1 1/4	-	-	-	1 1/4	1 1/4	1 1/4	-	1 1/4	1 1/4	-	1 1/4	1 1/4
	-	-	-	-	-	1 1/2	-	-	-	-	1 1/2	1 1/2	1 1/2	1 1/2	-	1 1/2	1 1/2	1 1/2	-	-	-	1 1/2	1 1/2	1 1/2	-	1 1/2	1 1/2	1 1/2	1 1/2	1 1/2	
	-	-	-	-	-	-	-	-	-	-	-	2	2	2	2	2	2	-	2	2	2	2	-	2	2	-	2	2	2	2	2
	-	-	-	-	-	-	-	-	-	-	-	-	-	-	2 1/2	2 1/2	2 1/2	2 1/2	-	2 1/2	2 1/2	-	2 1/2	-	2 1/2	-	2 1/2	2 1/2	2 1/2	2 1/2	
	-	-	-	-	-	-	-	-	-	-	-	-	-	-	-	-	-	-	3	3	-	-	-	-	3	-	-	-	-	-	
	-	-	-	-	-	-	-	-	-	-	-	-	-	-	-	-	-	3 1/2	3 1/2	3 1/2	-	-	-	-	3 1/2	-	-	-	-	-	
	-	-	-	-	-	-	-	-	-	-	-	-	-	-	-	-	-	-	-	4	-	-	-	-	4	-	-	-	-	-	

Dimensions (in inches)

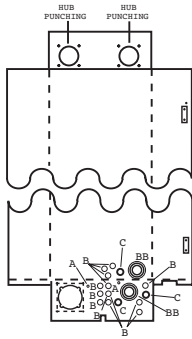
Box No.	Width	Height	Depth
R12	14	23 1/2	4 7/8
R14	14	30 3/4	5 3/4
R15	16 3/4	33	6 3/16
R16	16 3/4	33	6 3/16
R17	16 3/4	34 1/4	7 5/16
R18	14 3/4	33	6 5/16
R19	16 3/4	28 1/2	7 5/16
R20	14 3/4	27 5/16	5 7/16
R21	14 9/16	43 5/8	7 3/16
R22	16 3/16	48 1/8	7 3/16
R23	30 1/4	40	6
R24	30 1/4	40	6



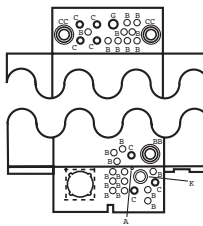
Box R12



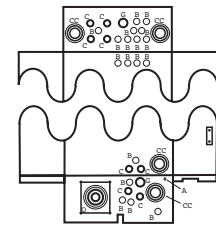
Box R14



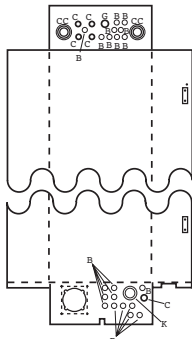
Box R16



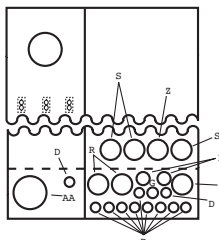
Box R17, R18



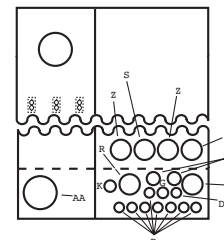
Box R19, R20



Box R21, R22



Box R23



Box R24

ReliaHome load centers and meter combos

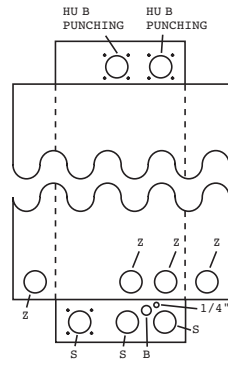
Knockouts

Knockouts

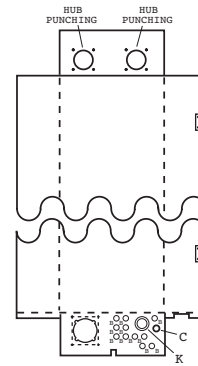
Symbol	A	•	B	C	D	E	F	G	H	J	K	L	M	N	P	Q	R	S	T	U	V	W	X	Y	Z	AA	BB	CC	DD	EE	FF				
Conduit Size in inches	5/32	-	-	-	-	-	-	-	-	-	-	-	-	-	-	-	-	-	-	-	-	-	-	-	-	-	-	-	-	-	-	-	-		
	-	3/8	-	3/8	-	-	3/8	-	-	-	-	-	-	-	-	-	-	-	-	-	-	-	-	-	-	-	-	-	-	-	-	-	-	-	
	-	1/2	1/2	1/2	1/2	-	1/2	1/2	1/2	-	-	-	-	-	-	-	-	1/2	-	-	-	-	-	-	1/2	-	-	1/2	1/2	1/2	-	-	-	-	
	-	-	-	3/4	3/4	3/4	3/4	3/4	3/4	3/4	3/4	3/4	-	-	3/4	-	3/4	3/4	-	-	-	3/4	-	3/4	3/4	-	3/4	3/4	-	3/4	-	-	-	-	
	-	-	-	-	-	-	1	1	1	1	1	1	1	1	-	1	1	-	-	1	-	-	1	-	1	-	1	1	-	1	-	-	-	-	
	-	-	-	-	-	-	1 1/4	-	1 1/4	1 1/4	1 1/4	1 1/4	1 1/4	1 1/4	1 1/4	1 1/4	1 1/4	-	1 1/4	1 1/4	-	-	-	1 1/4	1 1/4	1 1/4	4-	1 1/4	1 1/4	-	1 1/4	1 1/4	-	-	
	-	-	-	-	-	-	1 1/2	-	-	-	-	1 1/2	1 1/2	1 1/2	1 1/2	-	1 1/2	1 1/2	1 1/2	-	-	-	1 1/2	1 1/2	1 1/2	2-	1 1/2	1 1/2	1 1/2	1 1/2	1 1/2	1 1/2	1 1/2	-	
	-	-	-	-	-	-	-	-	-	-	-	-	2	2	2	2	2	2	2	-	2	2	2	-	2	2	-	2	2	2	2	2	2	2	2
	-	-	-	-	-	-	-	-	-	-	-	-	-	-	-	2 1/2	2 1/2	2 1/2	2 1/2	-	2 1/2	2 1/2	-	2 1/2	-	2 1/2	-	2 1/2	2	2 1/2	2 1/2	2 1/2	2 1/2	2 1/2	
	-	-	-	-	-	-	-	-	-	-	-	-	-	-	-	-	-	-	-	-	3	3	-	-	-	-	3	-	-	-	-	-	-	-	
	-	-	-	-	-	-	-	-	-	-	-	-	-	-	-	-	-	-	-	-	3 1/2	3 1/2	3 1/2	-	-	-	3 1/2	-	-	-	-	-	-	-	
	-	-	-	-	-	-	-	-	-	-	-	-	-	-	-	-	-	-	-	-	-	4	-	-	-	-	4	-	-	-	-	-	-	-	

Dimensions (in inches)

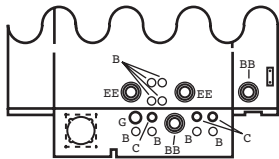
Box No.	Width	Height	Depth
R25	14	26	4 1/2
R26	14 9/16	43 5/8	6 3/16
R27	14 9/16	48 1/8	6 3/16
R28	22 1/2	27 7/8	6 1/4
R29	22 1/2	34 7/8	6 1/4
R30	14 9/16	40 1/2	6 3/16
R31	14 9/16	33 9/16	6 3/16
R32	16	17	5
R32A	18 7/8	18 9/16	5
R40	14	32	4 1/2



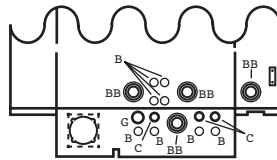
Box R25



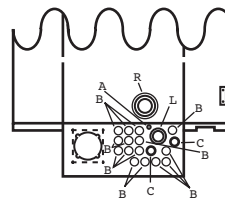
Box R26, R27



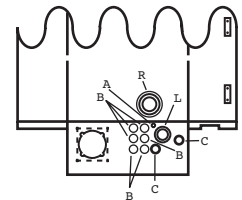
Box R28



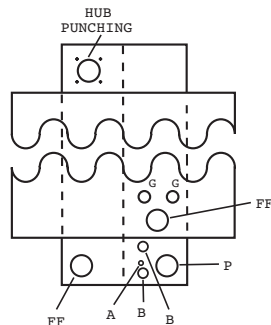
Box R29



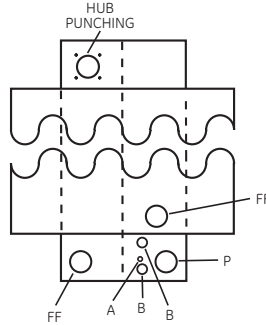
Box R30



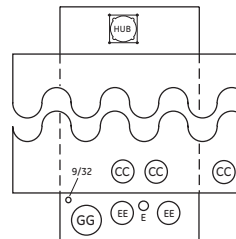
Box R31



Box R32



Box R32A



Box R40

ReliaHome load centers and meter combos

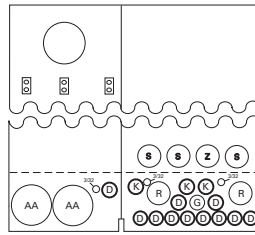
Knockouts

Knockouts

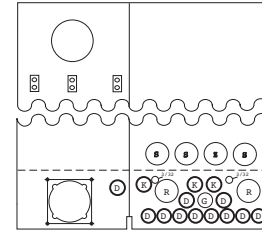
Symbol	A	B	C	D	E	F	G	H	J	K	L	M	N	P	Q	R	S	T	U	V	W	X	Y	Z	AA	BB	CC	DD	EE	FF	GG	
Conduit Size in inches	5/32	-	-	-	-	-	-	-	-	-	-	-	-	-	-	-	-	-	-	-	-	-	-	-	-	-	-	-	-	-	-	-
	-	3/8	-	3/8	-	3/8	-	-	-	-	-	-	-	-	-	-	-	-	-	-	-	-	-	-	-	-	-	-	-	-	-	-
	-	1/2	1/2	1/2	1/2	1/2	1/2	1/2	1/2	-	-	-	-	-	-	-	-	1/2	-	-	-	-	-	-	1/2	-	-	1/2	1/2	1/2	-	-
	-	-	-	3/4	3/4	3/4	3/4	3/4	3/4	3/4	3/4	-	-	3/4	-	3/4	-	3/4	-	-	-	3/4	-	3/4	3/4	-	3/4	3/4	-	3/4	-	-
	-	-	-	-	-	1	1	1	1	1	1	1	1	-	1	1	-	1	-	-	1	-	1	-	-	1	1	-	1	-	-	-
	-	-	-	-	-	1 1/4	-	1 1/4	1 1/4	1 1/4	1 1/4	1 1/4	1 1/4	1 1/4	1 1/4	1 1/4	-	1 1/4	1 1/4	-	-	-	1 1/4	1 1/4	1 1/4	4-	1 1/4	1 1/4	-	1 1/4	1 1/4	1 1/4
	-	-	-	-	-	1 1/2	-	-	-	-	1 1/2	1 1/2	1 1/2	1 1/2	-	1 1/2	1 1/2	1 1/2	-	-	-	1 1/2	1 1/2	1 1/2	2-	1 1/2	1 1/2	1 1/2	1 1/2	1 1/2	1 1/2	1 1/2
	-	-	-	-	-	-	-	-	-	-	-	-	2	2	2	2	2	2	-	2	2	2	2	2	-	2	2	2	2	2	2	2
	-	-	-	-	-	-	-	-	-	-	-	-	-	-	2 1/2	2 1/2	2 1/2	2 1/2	-	2 1/2	2 1/2	2 1/2	2 1/2	-	2 1/2	-	-	2 1/2	2 1/2	2 1/2	2 1/2	
	-	-	-	-	-	-	-	-	-	-	-	-	-	-	-	-	-	-	-	3	3	-	-	-	-	3	-	-	-	-	-	3
-	-	-	-	-	-	-	-	-	-	-	-	-	-	-	-	-	-	3 1/2	3 1/2	3 1/2	-	-	-	-	3 1/2	-	-	-	-	-	-	
-	-	-	-	-	-	-	-	-	-	-	-	-	-	-	-	-	-	-	-	4	-	-	-	-	4	-	-	-	-	-	-	

Dimensions (in inches)

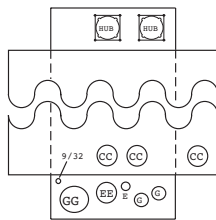
Box No.	Width	Height	Depth
R33	30 1/4	33	6 3/32
R34	30 1/4	40	6 3/32
R35	30 1/4	47	6 3/32
R36	14	28 1/2	4 1/2
R37	14	31 3/4	4 1/2
R38	14	49 1/2	10
R39	14	31 11/16	4 5/8
R40	14	32	4 1/2



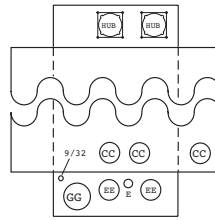
Box R33



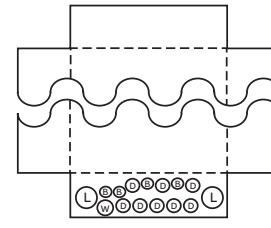
Box R34, R35



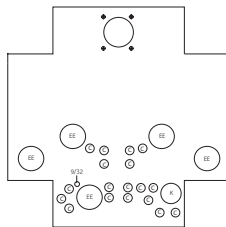
Box R36A, R37A



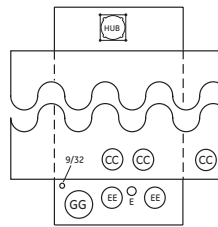
Box R36B, R37B



Box R38



Box R39



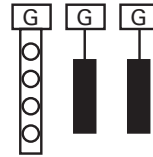
Box R40

ReliaHome load centers

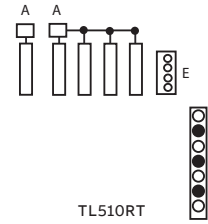
Wiring diagrams

Breaker Symbol	Breaker Fill	
	1" THQL	1/2" THQP
	1	—
	1	2

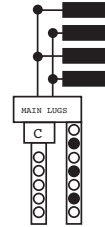
Terminal Symbol	Wire Range (AWG/kcmil)	
	Cu	Al
○	14-8	12-8
●	14-4	12-4
A	6-2	6-2
B	14-1/0	12-1/0
C	6-2/0	6-2/0
D	1-300	2/0-300
E	1-300	1-300
F	6-1	6-1
G	6-3	6-3



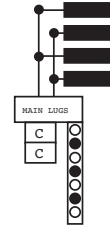
TL240SCU, RCU
TL270SCU, RCU



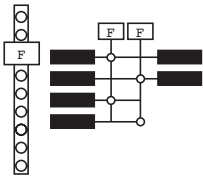
TL510RT



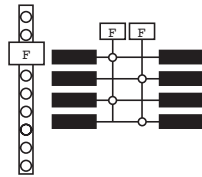
TPL412C, TL412C,
TPL412R, TL412R1,
TL412R2, TL412R250GF,
TL412R260GF



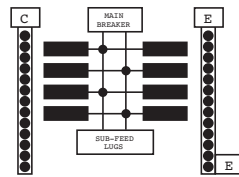
TPL412CT, TL412CT
TPL412RT, TL412RT1



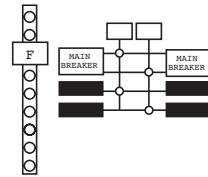
TLM612FCU, SCU
FCUD, SCUD, RCU



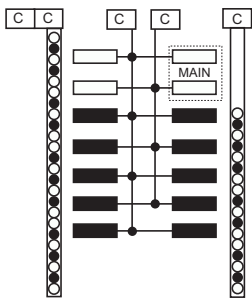
TLM812FCU, SCU,
FCUD, SCUD, RCU



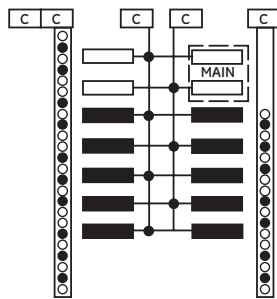
TM815RCUFL
TM820RCUFL



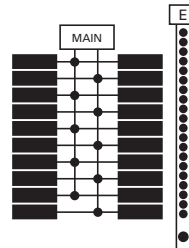
TM860FCUGEN, TM830FCUGEN,
TM860SCUGEN, TM830SCUGEN,
TM860RCUGEN, TM830RCUGEN



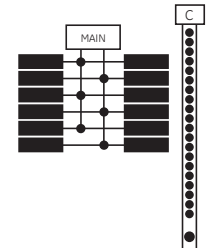
TM1210CCU, TM1212CCU,
TLM1212CCU



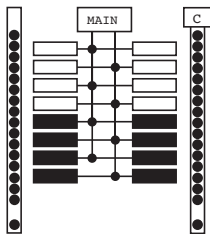
TM1210RCU, TM1212RCU,
TLM1212RCU



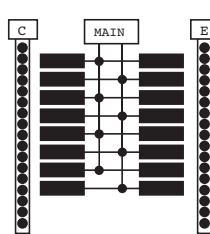
TLM2012CCURP,
TLM2012CCURPW



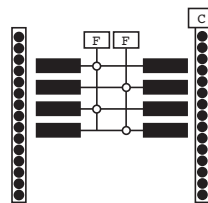
TLM1212CCURP



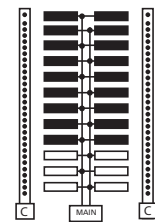
TLM1612CCU,
TM1612CCU, TM1612RCU



TM1615CCU, TM1615RCU, TM1620CCU,
TLM1620CCU, TLM1620RCU



TLM812RCU2



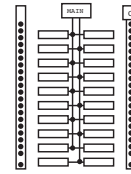
TM2420R42B

ReliaHome load centers

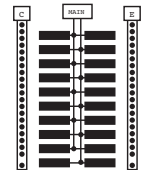
Wiring diagrams

Breaker Symbol	Breaker Fill	
	1" THQL	1/2" THQP
	1	—
	1	2

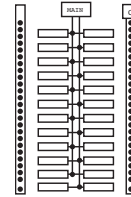
Terminal Symbol	Wire Range (AWG/kcmil)	
	Cu	Al
○	14-8	12-8
●	14-4	12-4
A	6-2	6-2
B	14-1/0	12-1/0
C	6-2/0	6-2/0
D	1-300	2/0-300
E	1-300	1-300
F	6-1	6-1
G	6-3	6-3



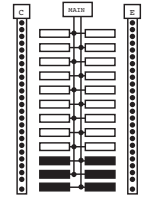
TM2010CCU, TM2010RCU



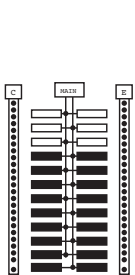
TM2020CCU, TM2020RCU
TLM2020CCU, TLM2020RCU



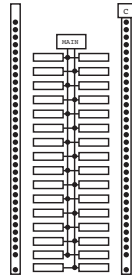
TM2410CCU, TM2412CCU
TM2412RCU, TLM2412CCU,
TLM2412RCU



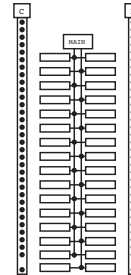
TM2415RCU,
TLM2415RCU



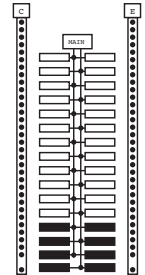
TLM2420C42, TM2415C42



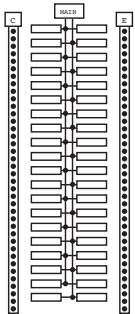
TM3210CCU



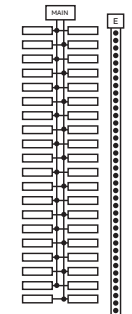
TM3215CCU, TM3215RCU



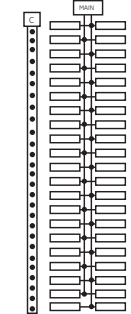
TM3220CCU, TM3220RCU,
TLM3220CCU, TLM3220RCU



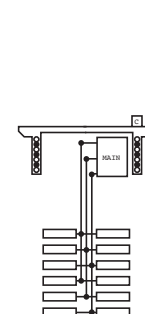
TM4020CCU, TM4020RCU
TLM4020CCU, TLM4020RCU



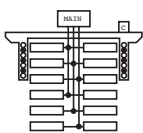
TLM4020CCURP



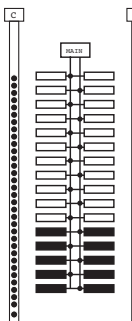
TM4222RCU, TLM4222CCU
TLM4222RCU, TM4222CCU



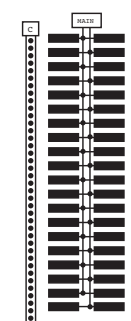
TM12410



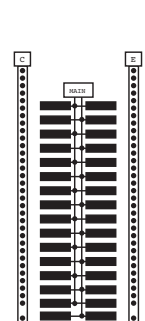
TL12412



TM3215C42, TLM3220C42,
TM3220C42



TLM4020C80G2, TM4020C80,
TM4015C80



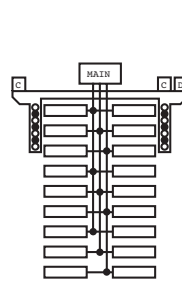
TLM3220C64G2,
TM3220C64

ReliaHome load centers

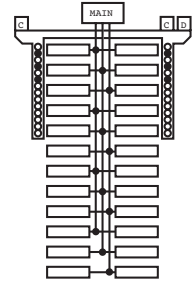
Wiring diagrams

Breaker Symbol	Breaker Fill	
	1" THQL	1/2" THQP
	1	—
	1	2

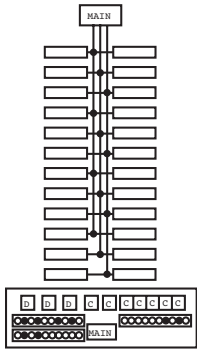
Terminal Symbol	Wire Range (AWG/kcmil)	
	Cu	Al
○	14-8	12-8
●	14-4	12-4
A	6-2	6-2
B	14-1/0	12-1/0
C	6-2/0	6-2/0
D	1-300	2/0-300
E	1-300	1-300
F	6-1	6-1
G	6-3	6-3



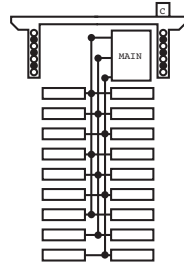
TL18415, TL18420



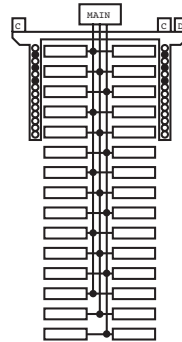
TL24415, TM24415



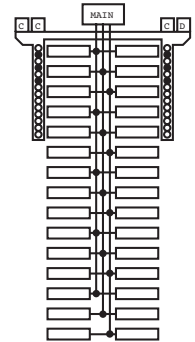
TL24440, TM24420



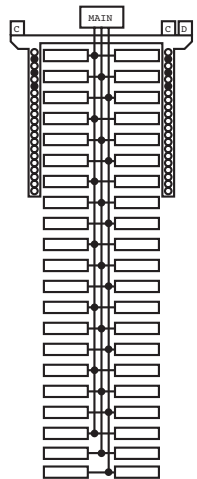
TM18410



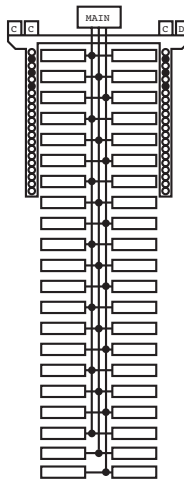
TM30412



TM30415, TL30420,
TM30240, TL30422





TL42420, TM42415C,
TM42420



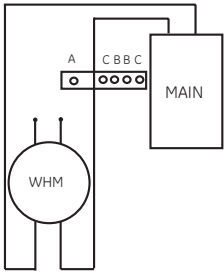
TL42422

Legacy PowerMark Gold load centers

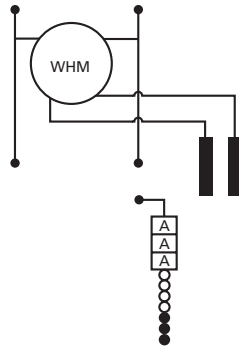
Wiring diagrams

Breaker Symbol	Breaker Fill	
	1" THQL	1/2" THQP
	1	—
	1	2

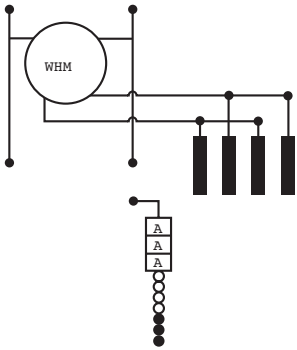
Terminal Symbol	Wire Range (AWG/kcmil)	
	Cu	Al
○	14-8	12-8
●	14-4	12-4
A	6-2	6-2
B	14-1/0	12-1/0
C	6-2/0	6-2/0
D	1-300	2/0-300
E	1-300	1-300
F	6-1	6-1
G	6-3	6-3



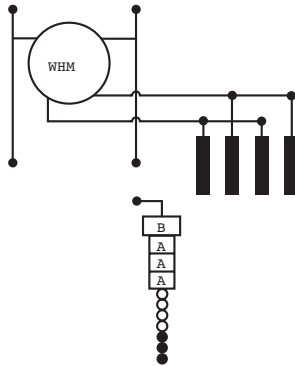
TM10RMC, TM12RMC, TM15RMC, TM20RMC,
TSMR015CSGP, TSMR020CSGP



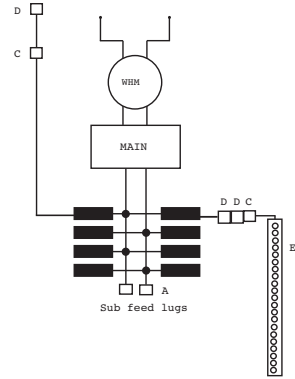
TSL210CSCU, TSL210CFUCU



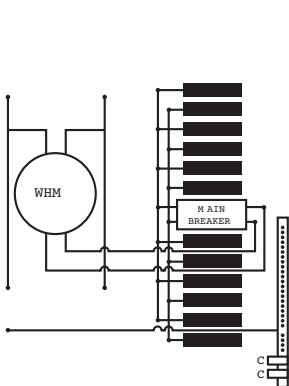
TSL412CSCU



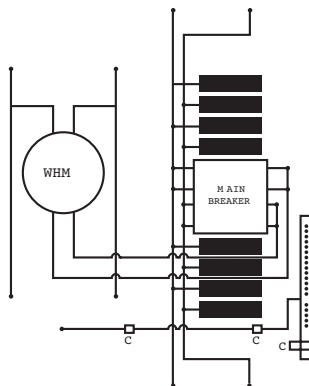
TSL420CSCU, TSL420CFUCU



TSM415CSCU, TSM420CSCU, TSMF415CSFL,
TSMF420CSFL, TSMR415CSCUGP,
TSMR420CSCUGP,
TSMR415CSFLFMG, TSMR420CSFLFMG





TSM1212CSCU, TSM1212CFUCU



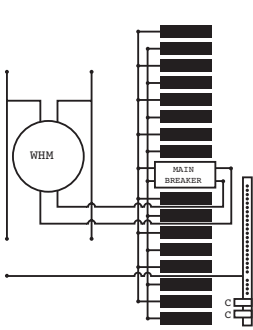
TSM815CSCU, TSM820CSCU

ReliaHome load centers

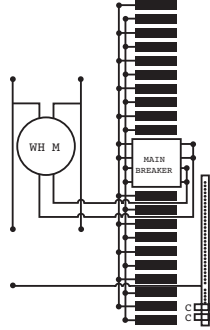
Wiring diagrams

Breaker Symbol	Breaker Fill	
	1" THQL	1/2" THQP
	1	—
	1	2

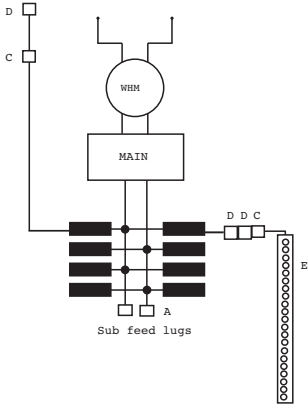
Terminal Symbol	Wire Range (AWG/kcmil)	
	Cu	Al
○	14-8	12-8
●	14-4	12-4
A	6-2	6-2
B	14-1/0	12-1/0
C	6-2/0	6-2/0
D	1-300	2/0-300
E	1-300	1-300
F	6-1	6-1
G	6-3	6-3



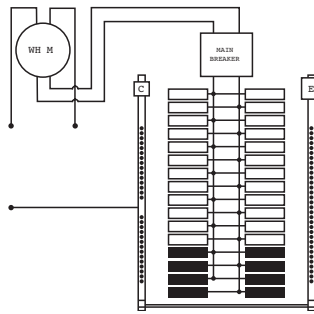
TSM1610CSCU, TSM1610CFCU,
TSM1612CFCU, TSM1612CSCU



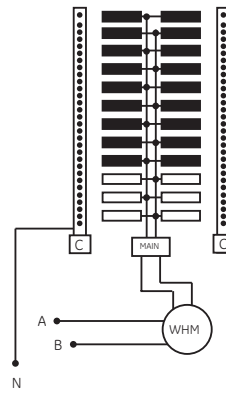
TSM2020CSCU,
TSM2020CFCU



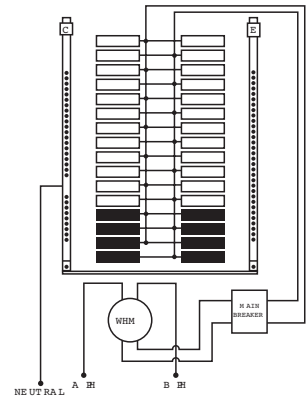
TSM815CSFL, TSM820CSFL,
TSMF815CSFL,
TSMF820CSFL, TSMR815CSFLFMG,
TSMR820CSFLFMG



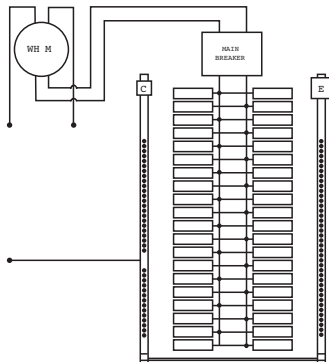
TSM3220UWCU



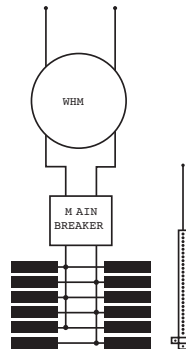
TSM2420UF42



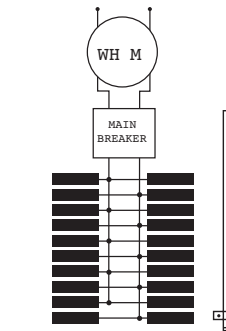
TSM3220USCU, TSM3220UFCU,
TSM3222USCU, TSM3222UFCU



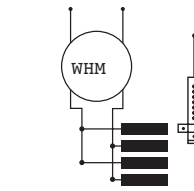
TSM4020UWCU



TSMR1212CSCU, TSMB1212CSCU





TSMR2020CSCU, TSMR2015CSCU,
TSMB2020CSCU, TSMB2015CSCU



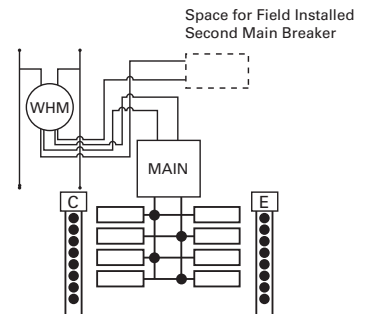
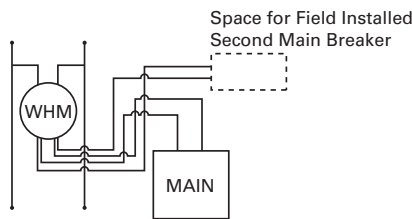
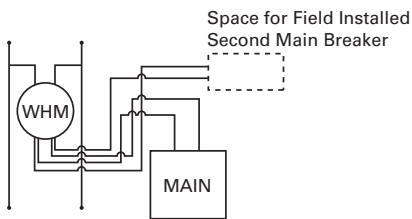
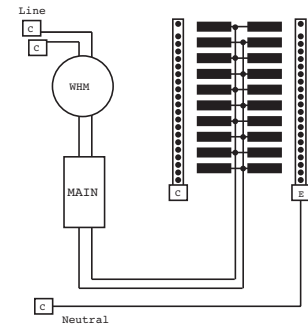
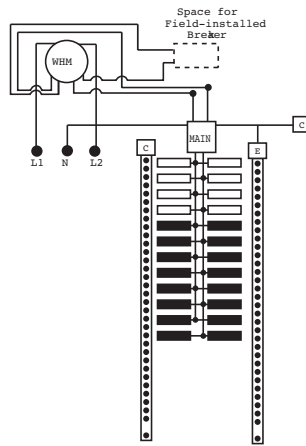
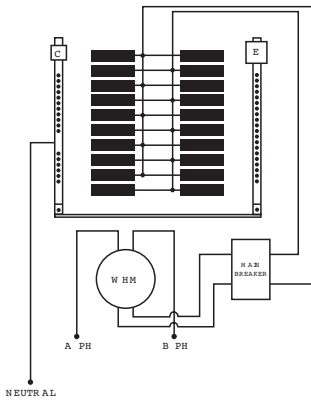
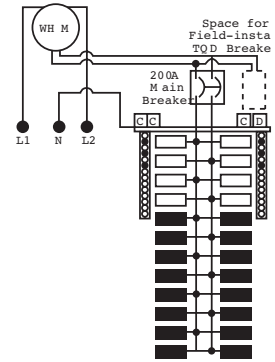
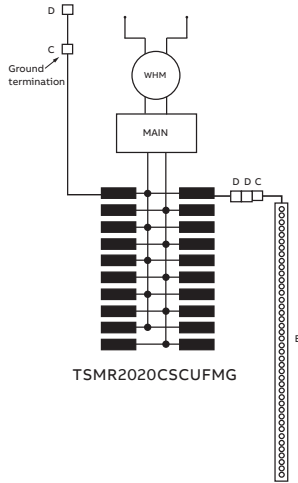
TSLR420CSCU, TSLR412CSCU,
TSLB412CSCU, TSLB420CSCU

ReliaHome load centers

Wiring diagrams

Breaker Symbol	Breaker Fill	
	1" THQL	1/2" THQP
	1	—
	1	2

Terminal Symbol	Wire Range (AWG/kcmil)	
	Cu	Al
○	14-8	12-8
●	14-4	12-4
A	6-2	6-2
B	14-1/0	12-1/0
C	6-2/0	6-2/0
D	1-300	2/0-300
E	1-300	1-300
F	6-1	6-1
G	6-3	6-3



ReliaHome smart panel

Table of contents

ReliaHome smart panel	
Product overview	1-73
Technical specifications	1-74
Accessories	1-75

ReliaHome smart panel

Product overview



Product overview

The ReliaHome™ Smart Panel is a home energy management solution designed to optimize and dynamically control the home’s highest consumption loads, saving homeowners money on their energy bill. With advanced features and unmatched reliability, the ReliaHome™ Smart Panel is the perfect solution for all electrical distribution equipment needs.

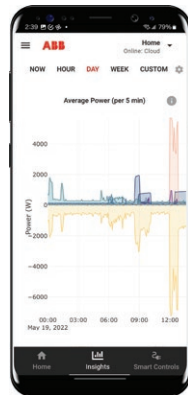
The ReliaHome™ Smart Panel can be used in new single-family homes or renovation projects. The Smart Panel is a complement to the home's traditional load center and is system agnostic.

Using intelligent energy management software, the smart panel adapts to the energy needs and allows control of multiple loads in the home – from electric vehicle chargers to battery and solar systems – using a phone or tablet from virtually anywhere.

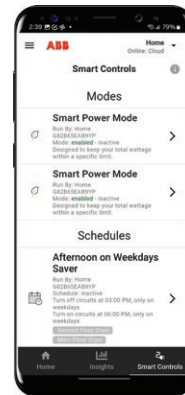
Features

- Add-on for existing systems
- 12 circuit load management
- 1P and 2P wiring
- Surface & flush mountable, indoor only
- Includes 200A CT kit
- Patented, UL/CSA Listed
- Application works with IOS, Android, and Web devices

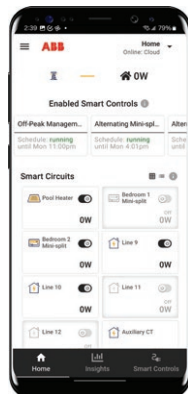
Description	Material #	ABB Product ID
ReliaHome™ Smart Panel	ABHEM1	1TQJ102110A1000



Discover all energy insights
Monitor whole home energy usage – on a real-time, hourly, daily, weekly or custom schedule.



Enable smart controls
With the “Smart Power Mode”, you can allow your smart panel system to autonomously turn on and off loads based on utility pricing (peak demand pricing) or your critical load panel.



Take control of the energy consumption at any time
Manually turn on and off loads or adjust the load shedding priority to customize your smart panel experience.

ReliaHome smart panel

Technical specifications

Installation	
Type	Wall-Mount; Indoor Only
Installer Qualification	Local Electrical Codes and Certified Installer
Typical Time Required	1.5–4 Hours
Temperature	0°C to 60°C (32°F to 140°F)
Humidity	< 80% RH (Non-Condensing)
Altitude	< 3000 m
Dimensions	44.6 cm × 44.6 cm × 10.1 cm (17.5 in × 17.5 in × 4.0 in)
Weight	12 kg (27 lb)
Conductor Length	All Extend 76 cm (30 in) Beyond Conduit End
Additional Units	Use of Multiple ABB Smart Panels Supported

Electrical System	
AC Voltage	120/240 VAC Split-Phase, 50–60Hz
Supply Breaker Rating	15–20 A (non-GFCI)

Connectivity & Security	
Connection Options	Wi-Fi or Ethernet
Internet Bandwidth	Approx. 0.02 Mbps
Wi-Fi Protocols	802.11 b/g/n, 2.4 GHz
Wi-Fi Encryption	WPA and WPA2 Methods
Ethernet Port	1×RJ-45 (10/100/1000 Mbps)
IP Addressing	Dynamic (DHCP)
Cryptographic System	TLS 1.2 (Minimum)
Firewall Outbound Access Required	Ports 53, 123, 443–444, and 50050–50059
Supply Amperage	0.4A (Maximum)
Standby Power	6W
Voltage Fluctuations	+/- 10% from Nominal
TPU (optional)	Load shedding supports toggling all lines a minimum of once during a power outage

Managed Loads	
Max. Load Breaker Ratings up to 50 °C	60 A per Line × 6 Lines and 30 A per Line × 6 Lines
Load Breaker Ratings at 50-60 °C	50 A per Line × 6 Lines and 20 A per Line × 6 Lines
Breaker Types	Single Pole (1 Line) and Dual Pole (2 Lines)

Measurement	
Accuracy	±0.5% of Load
Monitoring Type	Separate Measurement of Lines (Including Dual-Pole)
Split-Phase Voltage	Separate Line-to-Neutral Potential Measurement
Current Transformers	2 Split-Core 200 A Included; Up to 2 Additional Available
Measurement Category	Loads: CAT III (Mains Distr.) GDC: CAT IV (Mains Source)

Support & Compliance	
Warranty	10-Year Limited
Compatible Equipment	All Makes/Models/Brands of Electrical Panels and Breakers
Safety Compliance	Listed to UL and CSA C22.2: 61010-1 & 61010-2-030
Radiofrequency Compliance	47 CFR 15 (FCC) RSS-Gen and RSP-100 (ISED) MET Listing E115439

User Access	
Local Network	Live Data and Controls
Applications	iOS, Android, and Web
Data	1-Second Granularity (Averaged from 16 kHz)
Load Controls	Manually/Directly, Automated Schedules, and Automated Modes

ReliaHome smart panel
 Accessories

If the ABBHEM1 is configured to automatically shed loads exceeding backup capacity following a grid outage, a Temporary Power Unit (ABBHEM1TPUK) accessory device may be required if the transfer to backup power takes more than 70 ms. Without the ABBHEM1TPUK, the smart panel could lose power before the backup transfer completes, and circuit disconnection would be delayed until after the smart panel powers on with the backup source.

The smart panel is equipped with leads for these main CTs as well as leads for an optional set of auxiliary CTs (ABBHEM1CT) which is available for purchase from ABB.

Description	Material #	ABB Product ID
ReliaHome™ Smart Panel Temp Power Kit	ABBHEM1TPUK	1TQJ103000E1003
ReliaHome™ Smart Panel Spare 200A CTs	ABBHEM1CT	1TQJ103000E1001

ReliaHome single socket metering

Table of contents

ReliaHome single socket metering	
Product overview	1-77
Ordering code construction	1-77
Single phase, 600 V ringless	1-78
Three phase, 600 V ringless	1-80
Single or three phase, 600V ringless	1-81
Single phase transformer rated	1-81

ReliaHome single socket metering

Product overview



For commercial and residential applications, single meter sockets are needed to allow the utilities to install a meter to monitor and hook up power.

Specifications and features

- Single phase or three phase
- UL Listed
- Tested and UL Listed up to 10 kAIC short circuit rating
- Selected items are utility approved
- NEMA 3R enclosure
- Integral duplex ground extruded in neutral lug
- G90 galvanized bridge provides superior corrosion resistance
- Heavy duty lug screws provide stronger connection component for reliable termination
- 125A units have horn bypass kit that is field installable by changing slide-nut
- 200A units have jaws made of copper plated alloy and have reinforcing springs to help maintain electrical connections
- 200A units have slide-nuts that allow for ease of installation of conductors and helps eliminate lost components
- Standard pack: 1

Ordering code construction

U	A	RS	5	2	0	3	B	FL	GE
Standard Prefix U = UL Labeled								Utility Approval (if applicable) FL = Meter Equipment Group KC = KCP&L	
Additional Features A = Aluminum Cab B = Barrel Lock C = Spring Jaw Socket F = Barrel Lock and Lock Guard G = Grounded Fifth Terminal H = Horn Bypass S = Screw Type Sealing Ring T = Grounded Connector (#14-#2 CU-AL) Z = 5/16" Hex Head Connector Screw								Standard Suffixes A = Aluminum Cabinet B = Small Hub Opening C = Small Hub Cover Plate HL = High Leg Label (Delta Service) L = 1 1/4" Hub N = 2" Hub ND = Neutral Disconnect SH = Stainless Steel Hasp T = Large Hub Opening U = Large Hub Cover Plate	
Product Group Designation H = Commercial or Residential Service, Single Position (lever bypass) RS = Residential Service, Single Position								Maximum Conductor (Line & Load) 0 = 3/8" Stud Connectors 1 = #2/0 Connectors 2 = #250 kcmil Connectors 3 = #350 kcmil Connectors 6 = #600 kcmil Connectors 9 = Dual #500 kcmil Connectors	
Jaw Quantity 4 = 4 Terminal 5 = 5 Terminal 7 = 7 Terminal									
Ampere Rating 1 = 125 Amps 2 = 200 Amps 3 = 320 Amps 5 = 150 Amps								Service Design 0 = Overhead 1 = Combination Overhead/Underground 2 = Underground, Side Wired 3 = Combination, Overhead/Underground, Side Wired	

ReliaHome single socket metering

Single phase, ringless

Amp	Wire range (CU/AL)	Overhead/underground line feed	Ground range (CU/AL)	Triplex ground	No. of terminals	Lever bypass	Horned bypass	Hub type	Enclosure N3R	UL & utility approved	Ordering code			
20	#12	Bottom	(2) #14-2	N	13	N	N	Solid top	G90 Steel	UL, DTE	1007003CGE			
	#12	Bottom	(2) #14-2	N	8	N	N	Solid top			1007361CGE			
125	#8-2/0	Bottom	No ground	N	4	N	N	Solid top	G90 Steel	UL	1006385BGE			
	#8-2/0	Top	(1) #14-2	Y	4	N	N	Small hub opening			GEKR1AS1BTZ			
	#8-2/0	Top	(1) #14-2	Y	4	N	Y	Small hub opening			GEKS1AS1BTV			
	#8-2/0	Top/bottom	(1) #14-2	Y	4	N	N	Small hub cover plate			UATZRS101CFLGE			
	#8-2/0	Top/bottom	No ground	N	4	N	Y	Small hub opening			UBHRS101BGE			
	#8-2/0	Top/bottom	(1) #14-2	Y	4	N	Y	Small hub opening			UFHTRS101BGE			
	#8-2/0	Top/bottom	(1) #14-2	Y	5	N	Y	Small hub opening			UGHTRS101BGE			
	#8-2/0	Top/bottom	(1) #14-2	Y	4	N	Y	Small hub opening			UHTRS101BGE			
	#8-2/0	Top/bottom	(2) #14-2	Y	4	N	N	Small hub opening			URS101BCPLGE			
	#8-2/0	Top/bottom	(2) #14-2	Y	4	N	N	Small hub cover plate			URS101CCPLGE			
	#8-2/0	Top/bottom	(1) #14-2	Y	4	N	N	Small hub opening			UTRS101BGE			
	#8-2/0	Top/bottom	(1) #14-2	Y	4	N	N	Small hub cover plate			UTZRS101CFLGE			
150	#8-250MCM	Top/bottom	(1) #14-2	Y	4	N	N	Small hub opening	G90 Steel	UL	UTRS502BGE			
200	#8-250MCM	Top/bottom	No ground	N	4	N	N	Small hub opening	G90 Steel	UL, DTE	1004709DGE			
	#8-250MCM	Top/bottom	No ground	N	4	N	N	Small hub cover plate			1004710EGE			
	#8-250MCM	Top/bottom	(1) #14-2	Y	4	N	Y	Small hub opening			UL, AEP, CECHA	1007665AGE		
	#8-250MCM	Top/bottom	(1) #14-2	Y	4	N	Y	Small hub opening			UL, CECHA	1007665GE		
	#6-350MCM	Top/bottom	(1) #14-2	Y	4	Y	N	Small hub cover plate			UL, AEP	1011692GE		
	#8-350MCM	Top	(1) #14-2	Y	4	N	N	Small hub opening			UL	GEKR1CS1BT		
	#8-250MCM	Top	(1) #14-2	Y	4	N	Y	Small hub opening			UL, AEP	GEKS1CS1BJTV		
	#8-350MCM	Top/bottom	(1) #14-2	Y	4	N	Y	Small hub cover plate			UL, AEP	GEKS1CS1DTV		
	#8-350MCM	Side	(1) #14-2	Y	4	N	Y	Solid top			UL, AEP	GEKS1DS1ATV		
	#8-350MCM	Side	(2) #14-2	N	4	N	N	(2) Small hub cover plates			UL	U92197CCPLGE		
	#6-350MCM	Top/bottom	(1) #14-2	Y	4	Y	N	Small hub opening			Aluminum	UL, GP, MEG	UATH4203BFLGE	
	#6-350MCM	Top/bottom	(1) #14-2	Y	4	Y	N	Large hub opening					UATH4203TFLGE	
	#6-350MCM	Top/bottom	(1) #14-2	Y	4	Y	N	Small hub cover plate					UATH4213CFLGE	
	#6-350MCM	Top/bottom	(1) #14-2	Y	4	Y	N	Large hub cover plate					UATH4213UFLGE	
	#8-250MCM	Top/bottom	(1) #14-2	Y	4	N	N	Small hub opening					UATRS202BFLGE	
	#8-250MCM	Top/bottom	(1) #14-2	Y	4	N	N	Small hub cover plate					UATRS212CFLGE	
	#8-350MCM	Bottom	(1) #14-2	Y	4	N	N	Solid top					UATRS213AFLGE	
	#8-350MCM	Top/bottom	(1) #14-2	Y	4	N	N	Small hub cover plate					UATRS213CFLGE	
	#8-350MCM	Bottom	(1) #14-2	Y	4	N	N	Solid top					UATRS223AFLGE	
	#8-250MCM	Top	No ground	N	4	N	Y	Small hub opening					UL	UBHRS202BGE
	#8-250MCM	Top/bottom	No ground	N	4	N	Y	Small hub opening					UL	UBHRS212BGE
	#8-250MCM	Top/bottom	(1) #14-2	Y	4	N	Y	Small hub opening					UL, AEP	UFHTRS202BGE
	#8-350MCM	Bottom	(1) #14-2	Y	4	N	Y	Solid top					UL, AEP	UFHTRS223AGE
	#8-350MCM	Top/bottom	(1) #14-2	Y	4	N	Y	Small hub cover plate					UL, AEP	UFHTRS233CGE
	#6-350MCM	Top/bottom	(1) #14-2	Y	4	Y	N	Small hub cover plate					UL, AEP	UFTH4213CGE
	#8-250MCM	Top/bottom	No ground	N	5	N	Y	Small hub cover plate					UL, KCP&L	UGHRS212CKCGE
	#8-350MCM	Top/bottom	(1) #14-2	Y	5	N	Y	Small hub opening					UL	UGHTRS213BGE
	#6-350MCM	Top/bottom	(1) #14-2	Y	5	Y	N	Small hub cover plate					UL	UGTH4213CGE
#8-350MCM	Top/bottom	(1) #14-2	Y	5	N	N	Small hub cover plate	UL	UGTRS213CGE					
#6-350MCM	Top/bottom	No ground	N	4	Y	N	Small hub cover plate	UL	UH4213CGE					
#8-250MCM	Top/bottom	(1) #14-2	Y	4	N	Y	Small hub opening	UL	UHTRS202BGE					
#8-350MCM	Side	(1) #14-2	Y	4	N	Y	Solid top	UL	UHTRS223AGE					

(continued on next page)

ReliaHome single socket metering

Single phase, ringless (continued)

Amp	Wire range (CU/AL)	Overhead/underground line feed	Ground range (CU/AL)	Triplex ground	No. of terminals	Lever bypass	Horned bypass	Hub type	Enclosure N3R	UL & utility approved	Ordering code
200	#8-350MCM	Top/bottom	(1) #14-2	Y	4	N	N	(2) Small hub cover plates	G90 steel	UL, GP, MEG	UT92197CCFLGE
	#6-350MCM	Top/bottom	(1) #14-2	Y	4	Y	N	Small hub opening			UTH4203BFLGE
	#6-350MCM	Top/bottom	(1) #14-2	Y	4	Y	N	Large hub opening			UTH4203TFLGE
	#6-350MCM	Top/bottom	(1) #14-2	Y	4	Y	N	Small hub opening	G90 steel	UL	UTH4213BGE
	#6-350MCM	Top/bottom	(1) #14-2	Y	4	Y	N	Small hub cover plate	G90 steel	UL, GP, MEG	UTH4213CFLGE
	#6-350MCM	Top/bottom	(1) #14-2	Y	4	Y	N	Large hub cover plate			UTH4213UFLGE
	#8-250MCM	Top/bottom	(1) #14-2	Y	4	N	N	Small hub opening	G90 steel	UL, CMP	UTRS202BGE
	#8-250MCM	Top/bottom	(1) #14-2	Y	4	N	N	Small hub opening	G90 steel	UL	UTRS212BGE
	#8-250MCM	Top/bottom	(1) #14-2	Y	4	N	N	Small hub cover plate			UTRS212CGE
	Line: (1) #8-350MCM load: (2) #8-250MCM	Top/bottom	(1) #14-2	Y	4	N	N	Small hub opening			UTRS2138BGE
	#8-350MCM	Bottom	(1) #14-2	Y	4	N	N	Solid top	G90 steel	UL, MEG	UTRS213AFLGE
	#8-350MCM	Top/bottom	(1) #14-2	Y	4	N	N	Small hub opening	G90 steel	UL, CMP	UTRS213BGE
	#8-350MCM	Top/bottom	(1) #14-2	Y	4	N	N	Small hub cover plate	G90 steel	UL, MEG	UTRS213CFLGE
	#8-350MCM	Top/bottom	(1) #14-2	Y	4	N	N	Small hub cover plate	G90 steel	UL, CMP	UTRS213CGE
	#8-350MCM	Bottom	(1) #14-2	Y	4	N	N	Solid top	G90 steel	UL, MEG	UTRS223AFLGE
	#8-350MCM	Bottom	(1) #14-2	Y	4	N	N	Solid top	G90 steel	UL	UTRS223AGE
320	Studs - (1) 600MCM or (2) 350MCM	Top	(1) #14 -1/0	Y	4	Y	N	Large hub opening	G90 steel	UL, CECHA	1007672GE ¹
	(2) #6-350MCM	Top/bottom	(1) #14 -1/0	Y	4	Y	N	Large hub cover plate	G90 steel	UL, AEP	1008068GE
	#4-600MCM	Bottom	(1) #14 -1/0	Y	4	Y	N	Solid top	G90 steel	UL	1008435GE
	Studs - (1) 600MCM or (2) 350MCM	Top/bottom	(1) #14 -1/0	Y	4	Y	N	Large hub cover plate	G90 steel	UL, GP, MEG	1008836GE ¹
	Studs - (1) 600MCM or (2) 350MCM	Top/bottom	(1) #14 -1/0	Y	4	Y	N	Large hub cover plate	Aluminum	UL, GP, MEG	1008837GE ¹
	Studs - (1) 600MCM or (2) 350MCM	Top/bottom	(1) #14 -1/0	Y	4	Y	N	Large hub cover plate	G90 steel	UL	1009260GE ¹
	Studs - (1) 600MCM or (2) 350MCM	Top/bottom	No ground	N	4	Y	N	Large hub cover plate	G90 steel	UL, DTE	1009788AGE ¹
	Studs - (1) 600MCM or (2) 350MCM	Top/bottom	(1) #14 -1/0	Y	4	Y	N	Large hub opening	Aluminum	UL, AEP	UAFTH4330TSHGE ¹
	#4-600MCM	Top/bottom	(1) #14 -1/0	Y	4	Y	N	Large hub opening			UAFTH4336TSHGE
	Studs - (1) 600MCM or (2) 350MCM	Top/bottom	(1) #14 -1/0	Y	4	Y	N	Large hub opening	Aluminum	UL, GP, MEG	UATH4300TFLGE ¹
	Studs - (1) 600MCM or (2) 350MCM	Top/bottom	(1) #14 -1/0	Y	4	Y	N	Large hub opening	G90 steel	UL, AEP	UFTH4330TGE ¹
	#4-600MCM	Top/bottom	(1) #14 -1/0	Y	4	Y	N	Large hub opening			UFTH4336TGE
	Line: (1) #4-600MCM load: (2) #6-250MCM	Top	(2) #14-2	Y	4	Y	N	Large hub opening	G90 steel	UL	UH43068TCPLGE
	Studs - (1) 600MCM or (2) 350MCM	Top/bottom	(1) #14-1/0	Y	4	Y	N	Large hub opening	G90 steel	UL, GP, MEG	UTH4300TFLGE ¹
	Studs - (1) 600MCM or (2) 350MCM	Top/bottom	(1) #14-1/0	Y	4	Y	N	Large hub opening	G90 steel	UL, CMP	UTH4330TGE ¹
	Line: (1) #4-600MCM load: (2) #6-350MCM	Top	(1) #14-1/0	Y	4	Y	N	Large hub opening	G90 steel	UL	UTH43369TGE
Line: (1) #4-600MCM load: (2) #6-350MCM	Top/bottom	(1) #14-1/0	Y	4	Y	N	Large hub opening			UTH73069THLGE	

¹Lugs not included. This product comes with studs only. Order lugs separately, see accessories on page 2-80. One (1) lug per kit, order appropriate quantity needed. For example, order 3 lugs (A, C, N) if meter is 1-phase or 4 lugs (A, B, C, N) if meter is 3-phase.

ReliaHome single socket metering

Three phase, ringless

Amp	Wire range (CU/AL)	Overhead/underground line feed	Ground range (CU/AL)	Triplex ground	No. of terminals	Lever bypass	Horned bypass	Hub type	Enclosure N3R	UL & utility approved	Ordering code
20	#10 - #12	Top/bottom	(1) #14-2	Y	13	N	N	Small hub cover plate	G90 steel	UL	URSTS132CGE
200	#6-350MCM	Top	(1) #14-2	Y	7	Y	N	Large hub opening	G90 steel	UL, CECHA	1007670GE
	#6-350MCM	Top/bottom	(1) #14-2	Y	7	Y	N	Large hub opening	Aluminum	UL, AEP	UAFTH7213TSHGE
	#6-350MCM	Top/bottom	(1) #14-2	Y	7	Y	N	Small hub opening	Aluminum	UL, GP, MEG	UATH7203BFLGE
	#6-350MCM	Top/bottom	(1) #14-2	Y	7	Y	N	Large hub opening			UATH7203TFLGE
	#6-350MCM	Top/bottom	(1) #14-2	Y	7	Y	N	Small hub cover plate			UATH7213CFLGE
	#6-350MCM	Top/bottom	(1) #14-2	Y	7	Y	N	Large hub cover plate			UATH7213UFLGE
	#6-350MCM	Top/bottom	No ground	N	7	Y	N	Small hub opening	G90 steel	UL	UBC7213BGE
	#6-350MCM	Top/bottom	No ground	N	7	Y	N	Large hub opening			UBH7213TGE
	#6-350MCM	Top/bottom	(1) #14-2	Y	7	Y	N	Small hub opening	G90 steel	UL, AEP	UFTH7213BGE
	#6-350MCM	Top/bottom	(1) #14-2	Y	7	Y	N	Large hub opening			UFTH7213TGE
	#6-350MCM	Top/bottom	(2) #14-2	Y	7	Y	N	Large hub opening			UFTTH7213TGE
	#6-350MCM	Top/bottom	No ground	N	7	Y	N	Small hub cover plate	G90 steel	UL, DTE	UH7213CGE
	#6-350MCM	Top/bottom	No ground	N	7	Y	N	Small hub cover plate			UH7213CKCGE
	#6-350MCM	Top/bottom	(1) #14-2	Y	7	Y	N	Small hub opening	G90 steel	UL, GP, MEG	UTH7203BFLGE
	#6-350MCM	Top/bottom	(1) #14-2	Y	7	Y	N	Large hub opening			UTH7203TFLGE
	#6-350MCM	Top/bottom	(1) #14-2	Y	7	Y	N	Large hub opening	G90 steel	UL, CMP	UTH7203TGE
	#6-350MCM	Top/bottom	(1) #14-2	Y	7	Y	N	Small hub opening			UTH7213BGE
	#6-350MCM	Top/bottom	(1) #14-2	Y	7	Y	N	Large hub opening	G90 steel	UL	UTH7213TGE
	#6-350MCM	Top/bottom	(1) #14-2	Y	7	Y	N	Large hub opening			UTH7213THLGE
	#6-350MCM	Top/bottom	(1) #14-2	Y	7	Y	N	Large hub opening	G90 steel	UL, CMP	UTH7213UGE
#6-350MCM	Top/bottom	(1) #14-2	Y	7	Y	N	Large hub cover plate	UL, AEP			UAFTH7330TSHGE ¹
320	Studs - (1) 600MCM or (2) 350MCM	Top/bottom	(1) #14 -1/0	Y	7	Y	N	Large hub opening	Aluminum	UL, AEP	UAFTH7336TSHGE
	#4-600MCM	Top/bottom	(1) #14 -1/0	Y	7	Y	N	Large hub opening			UATH7300TFLGE ¹
	Studs - (1) 600MCM or (2) 350MCM	Top/bottom	(1) #14 -1/0	Y	7	Y	N	Large hub opening	Aluminum	UL, MEG	UATH7300TFLGE ¹
	Studs - (1) 600MCM or (2) 350MCM	Side	(1) #14 -1/0	Y	7	Y	N	Large hub cover plate			UL, GP, MEG
	Studs - (1) 600MCM or (2) 350MCM	Top/bottom	(1) #14 -1/0	Y	7	Y	N	Large hub opening	G90 steel	UL, AEP	UFTH7330TGE ¹
	#4-600MCM	Top/bottom	(1) #14 -1/0	Y	7	Y	N	Large hub opening			UFTH7336TGE
	Studs - (1) 600MCM or (2) 350MCM	Top/bottom	(2) #14-1/0	Y	7	Y	N	Large hub opening			UFTTH7330TGE ¹
	#4-600MCM	Top/bottom	(2) #14-1/0	Y	7	Y	N	Large hub opening	G90 steel	UL, GP, MEG	UFTTH7336TGE
	Studs - (1) 600MCM or (2) 350MCM	Top/bottom	(1) #14-1/0	Y	7	Y	N	Large hub opening			UTH7300TFLGE ¹
	Studs - (1) 600MCM or (2) 350MCM	Top/bottom	(1) #14-1/0	Y	7	Y	N	Large hub opening	G90 steel	UL	UTH7330TGE ¹
	Studs - (1) 600MCM or (2) 350MCM	Top/bottom	(1) #14-1/0	Y	7	Y	N	Large hub cover plate			UL, GP, MEG
	Line: (1) #4-600MCM load: (2) #6-350MCM	Top/bottom	(1) #14-1/0	Y	7	Y	N	Large hub opening	G90 steel	UL	UTH73369THLGE

¹Lugs not included. This product comes with studs only. Order lugs separately, see accessories on page 2-80. One (1) lug per kit, order appropriate quantity needed. For example, order 3 lugs (A, C, N) if meter is 1-phase or 4 lugs (A, B, C, N) if meter is 3-phase.

ReliaHome single socket metering

Single or three phase, ringless

Amp	Wire range (CU/AL)	Overhead/underground line feed	Ground range (CU/AL)	Triplex ground	No. of terminals	Lever bypass	Horned bypass	Hub type	Enclosure N3R	UL & utility approved	Ordering code
200	#6-350MCM	Top/bottom	(1) #14-2	Y	5	Y	N	Small hub opening	Aluminum	UL, AEP	UAFTH5213BNDGE
	#6-350MCM	Top/bottom	(1) #14-2	Y	5	Y	N	Small hub opening	Aluminum	UL, MEG	UATH5203BFLGE
	#6-350MCM	Top/bottom	(1) #14-2	Y	5	Y	N	Large hub opening			UATH5203TFLGE
	#6-350MCM	Top/bottom	(1) #14-2	Y	5	Y	N	Small hub cover plate			UATH5213CFLGE
	#6-350MCM	Top/bottom	(1) #14-2	Y	5	Y	N	Large hub cover plate			UATH5213UFLGE
	#6-350MCM	Top/bottom	(1) #14-2	Y	5	Y	N	Small hub opening	G90 steel	UL, AEP	UFTH5213BNDGE
	#6-350MCM	Top/bottom	(1) #14-2	Y	5	Y	N	Small hub opening	G90 steel	UL, MEG	UTH5203BFLGE
	#6-350MCM	Top/bottom	(1) #14-2	Y	5	Y	N	Small hub opening	G90 steel	UL, CMP	UTH5203BGE
	#8-350MCM	Top/bottom	(1) #14-2	Y	5	Y	N	Large hub opening	G90 steel	UL, MEG	UTH5203TFLGE
	#6-350MCM	Top/bottom	(1) #14-2	Y	5	Y	N	Small hub opening	G90 steel	UL	UTH5213BNDGE
	#6-350MCM	Top/bottom	(1) #14-2	Y	5	Y	N	Small hub cover plate	G90 steel	UL, MEG	UTH5213CFLGE
	#6-350MCM	Top/bottom	(1) #14-2	Y	5	Y	N	Small hub cover plate	G90 steel	UL, CMP	UTH5213CGE
	#6-350MCM	Top/bottom	(1) #14-2	Y	5	Y	N	Large hub cover plate	G90 steel	UL, MEG	UTH5213UFLGE
	#6-350MCM	Top/bottom	(1) #14-2	Y	5	Y	N	Small hub cover plate	G90 steel	UL, CMP	UTH5233CGE
320	Studs - (1) 600MCM or (2) 350MCM	Top/bottom	(1) #14 -1/0	Y	5	Y	N	Large hub opening	Aluminum	UL, MEG	UATH5300TFLGE ¹
	Studs - (1) 600MCM or (2) 350MCM	Top/bottom	(1) #14 -1/0	Y	5	Y	N	Large hub cover plate			UATH5330UFLGE ¹
	Studs - (1) 600MCM or (2) 350MCM	Top/bottom	(1) #14-1/0	Y	5	Y	N	Large hub opening	G90 steel	UL, MEG	UTH5300TFLGE ¹
	Studs - (1) 600MCM or (2) 350MCM	Top/bottom	(1) #14-2	Y	5	Y	N	Large hub cover plate			UTH5330UFLGE ¹

Single phase transformer rated, FP&L approved²

Amp	End lug size (CU/AL)	Side lug size (CU/AL)	Overhead/underground line feed	Number of terminals	Hub type	Enclosure NEMA 3R	UL & utility approved	Ordering code
20	#14-2	#14-2	Top/bottom	6	Small hub cover plate	Aluminum	UL, FP&L	UASTH61C755GE
	#14-2	#14-2	Top/bottom	6	Small hub cover plate	Steel	UL, FP&L	USTH61C756GE
	#14-2	#14-2	Top/bottom	13	Small hub opening	Aluminum	UL, FP&L	UASTH131B757GE
	#14-2	#14-2	Top/bottom	13	Small hub cover plate	Steel	UL, FP&L	USTH131C758GE

Single phase transformer rated, TECO approved³

Amp	End lug size (CU/AL)	Side lug size (CU/AL)	Overhead/underground line feed	Number of terminals	Hub type	Enclosure NEMA 3R	UL & utility approved	Ordering code
20	#14-2	#14-2	Top/bottom	6	Small hub opening	Steel	UL, TECO	URSTH62B759GE
	#14-2	#14-2	Top/bottom	6	Small hub opening	Aluminum	UL, TECO	UARSTH62B760GE
	#14-2	#14-2	Top/bottom	13	Small hub cover plate	Steel	UL, TECO	URSTH132C761GE
	#14-2	#14-2	Top/bottom	13	Small hub cover plate	Aluminum	UL, TECO	UARSTH132C762GE

¹Lugs not included. This product comes with studs only. Order lugs separately, see accessories on page 2-80. One (1) lug per kit, order appropriate quantity needed.

For example, order 3 lugs (A, C, N) if meter is 1-phase or 4 lugs (A, B, C, N) if meter is 3-phase.

²Units come with a test switch (not pre-wired) and have a one piece ringless cover.

³Units are pre-wired with test switch (per TECO specs) and have a two piece ring type cover.

