



**GE Industrial Systems**

**Jiffy III Utility Service Entrance Switchboard  
Single Section**

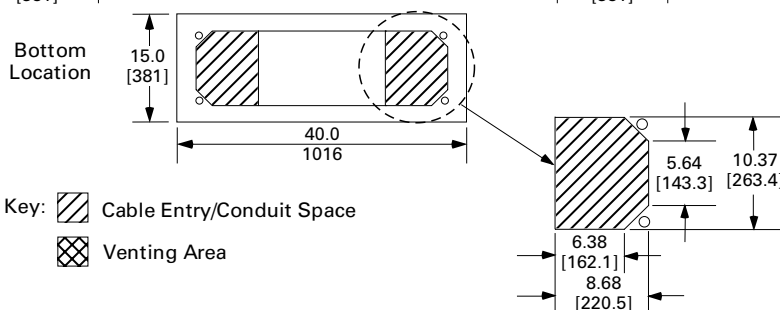
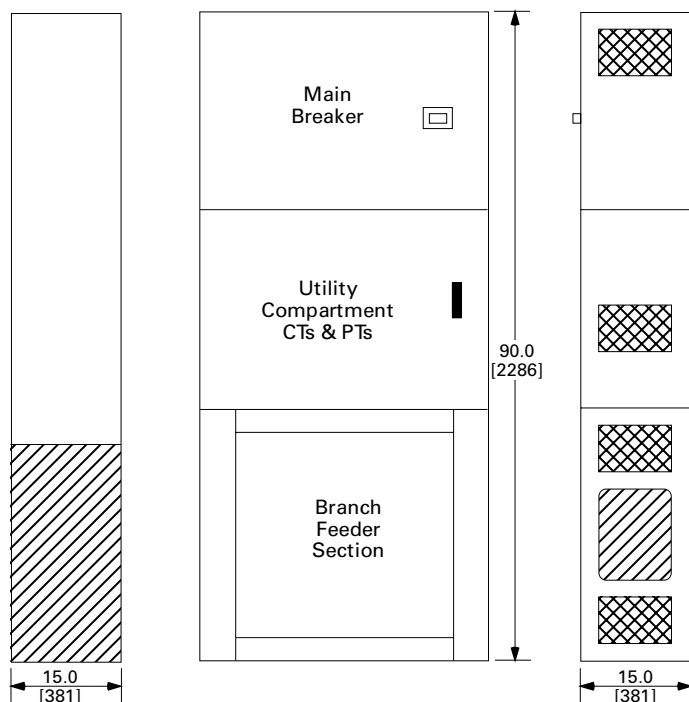
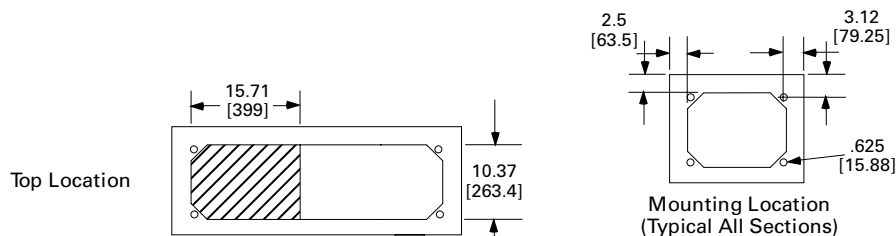
Date:

Prop #:

Project:

Drawn by:

PO # / Item #:



**Notes:**

1. Dimensions are given in inches [mm].
2. 100% rated, 1000 A switchboards must be mounted at least 1 inch from the rear wall for proper ventilation.
3. No 100% feeder breakers may be used.
4. A shunt trip and undervoltage release cannot both be installed in the same breaker.
5. Ground fault protection cannot be used on feeder breakers.
6. MicroVersaTrip Plus™ and MicroVersaTrip PM™ breakers are not available as feeder devices.



**GE Industrial Systems**

**Jiffy III Utility Service Entrance Switchboard  
Single Section**

Date: \_\_\_\_\_

Prop #: \_\_\_\_\_

Project: \_\_\_\_\_

Drawn by: \_\_\_\_\_

PO # / Item #: \_\_\_\_\_

**Service:** \_\_\_\_\_ Volts, \_\_\_\_\_ Ø, \_\_\_\_\_ W

**Main Incoming Breaker**

Type: \_\_\_\_\_ Poles: \_\_\_\_\_

Frame Rating: \_\_\_\_\_ Amperes

Trip Rating: \_\_\_\_\_ Amperes

**Main Incoming Cable:**

\_\_\_\_\_ per Ø and N

**Utility CT Type:** Bar

**Bussing**

Amperes: 1200

Tin-Plated Aluminum

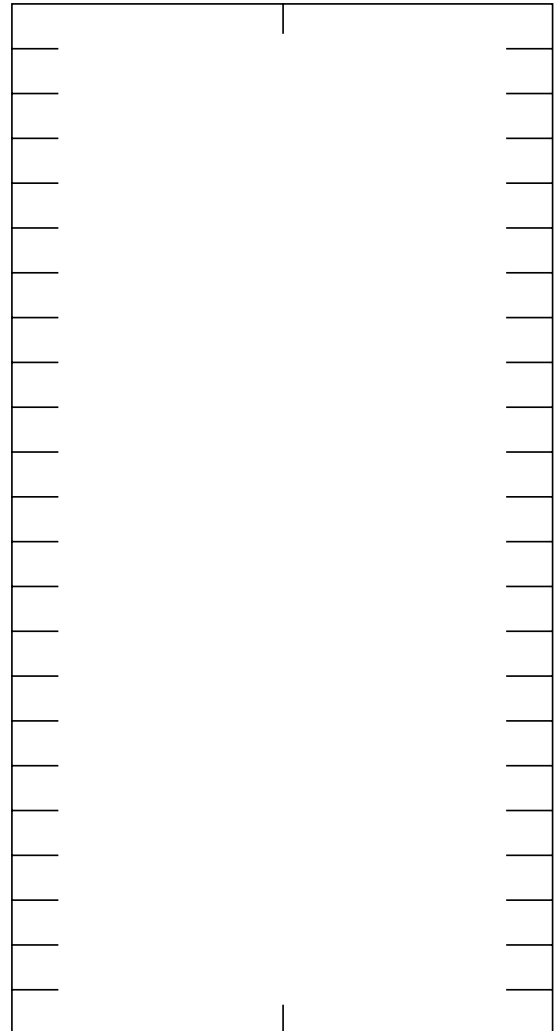
Bracing: 65 kA (limited to device ratings)

**Short-Circuit Rating:** \_\_\_\_\_ kA RMS Sym. (65 kA max.)

**Enclosure:** NEMA1 with Driphood

**Trim Color:** ANSI 61 Grey

**Notes:**



23X Panel Layout  
Bolt-On Breakers  
1X = 1.375" (35 mm)

Refer to Panelboard section of  
current BuyLog for device X height.

Customer: \_\_\_\_\_

Customer # \_\_\_\_\_

Distributor: \_\_\_\_\_

Distributor # \_\_\_\_\_

Project: \_\_\_\_\_

Preliminary for Approval

Consultant: \_\_\_\_\_

Approved for Construction

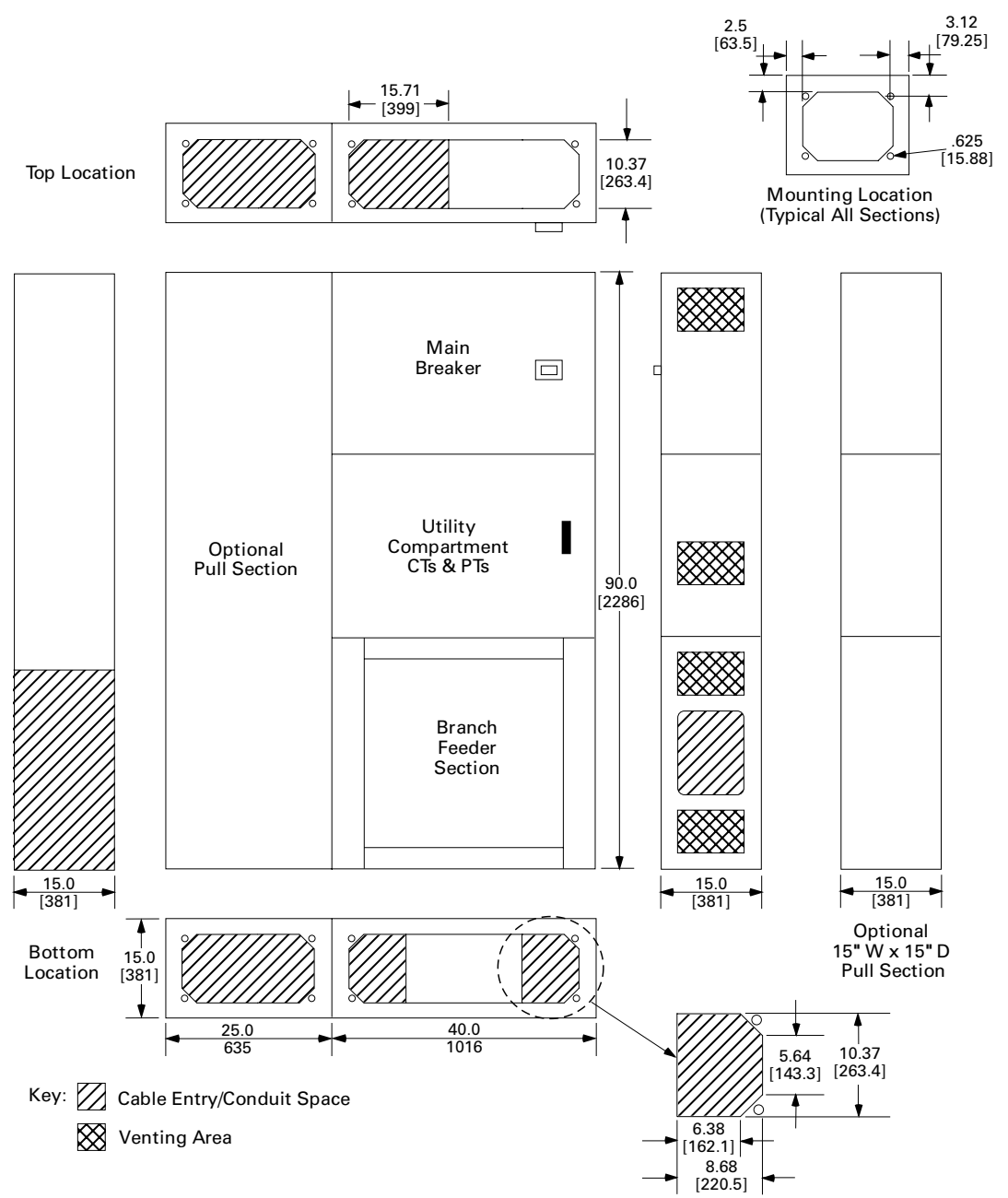


**GE Industrial Systems**

**Jiffy III Utility Service Entrance Switchboard  
Single Section with Pull on Left**

Date: Prop #: Project:

Drawn by: PO # / Item #:



**Notes:**

1. Dimensions are given in inches [mm].
2. 100% rated, 1000 A switchboards must be mounted at least 1 inch from the rear wall for proper ventilation.
3. No 100% feeder breakers may be used.
4. A shunt trip and undervoltage release cannot both be installed in the same breaker.
5. Ground fault protection cannot be used on feeder breakers.
6. MicroVersaTrip Plus™ and MicroVersaTrip PM™ breakers are not available as feeder devices.



**GE Industrial Systems**

**Jiffy III Utility Service Entrance Switchboard**  
Single Section with Pull on Left

Date: \_\_\_\_\_

Prop #: \_\_\_\_\_

Project: \_\_\_\_\_

Drawn by: \_\_\_\_\_

PO # / Item #: \_\_\_\_\_

**Service:** \_\_\_\_\_ Volts, \_\_\_\_\_ Ø, \_\_\_\_\_ W

**Main Incoming Breaker**

Type: \_\_\_\_\_ Poles: \_\_\_\_\_

Frame Rating: \_\_\_\_\_ Amperes

Trip Rating: \_\_\_\_\_ Amperes

**Main Incoming Cable:**

\_\_\_\_\_ per Ø and N

**Utility CT Type:** Bar

**Bussing**

Amperes: 1200

Tin-Plated Aluminum

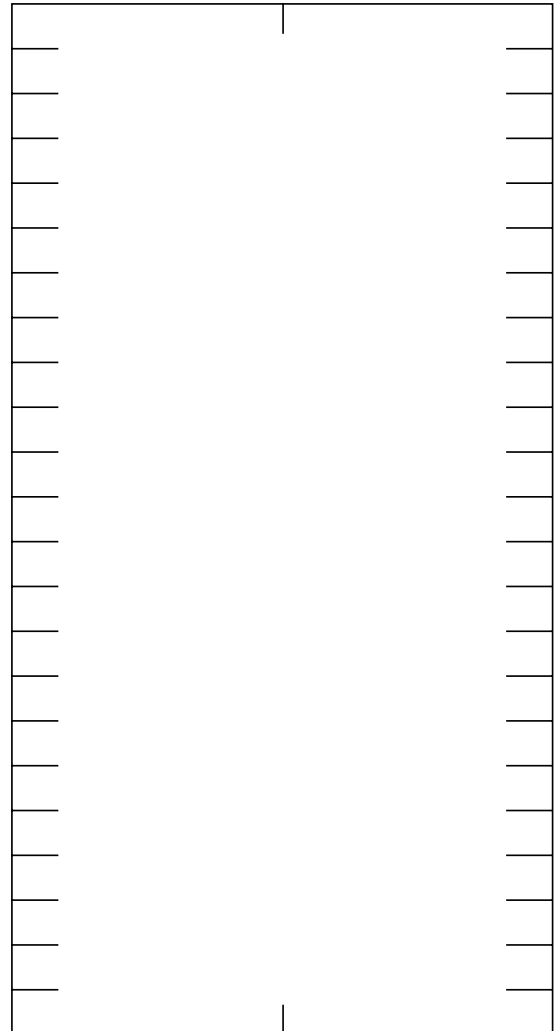
Bracing: 65 kA (limited to device ratings)

**Short-Circuit Rating:** \_\_\_\_\_ kA RMS Sym. (65 kA max.)

**Enclosure:** NEMA1 with Driphood

**Trim Color:** ANSI 61 Grey

**Notes:**



23X Panel Layout  
Bolt-On Breakers  
1X = 1.375" (35 mm)

Refer to Panelboard section of  
current BuyLog for device X height.

Customer: \_\_\_\_\_

Customer # \_\_\_\_\_

Distributor: \_\_\_\_\_

Distributor # \_\_\_\_\_

Project: \_\_\_\_\_

Preliminary for Approval

Consultant: \_\_\_\_\_

Approved for Construction



**GE Industrial Systems**

**Jiffy III Utility Service Entrance Switchboard  
Single Section with Pull on Right**

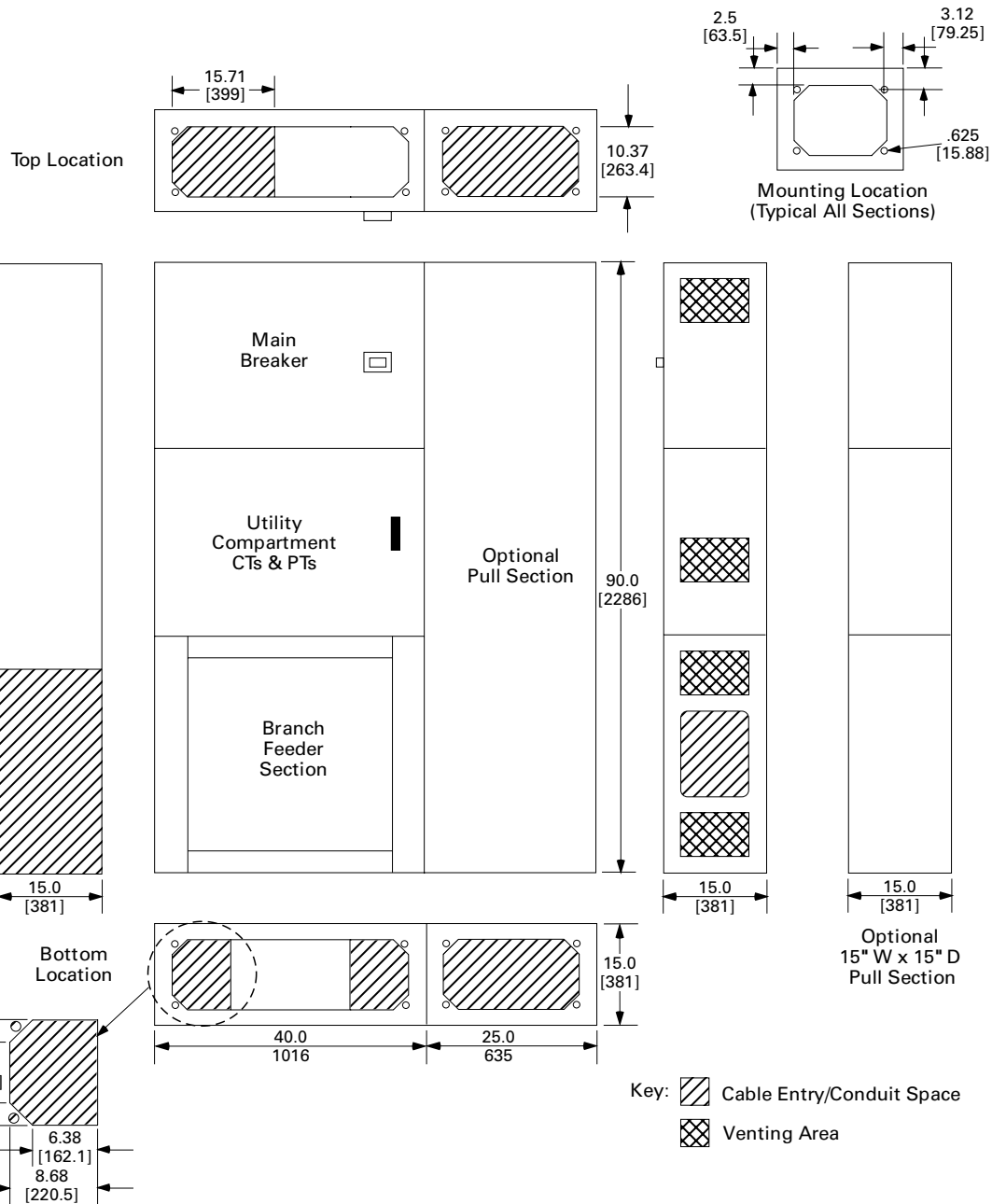
Date:

Prop #:

Project:

Drawn by:

PO # / Item #:



**Notes:**

1. Dimensions are given in inches [mm].
2. 100% rated, 1000 A switchboards must be mounted at least 1 inch from the rear wall for proper ventilation.
3. No 100% feeder breakers may be used.
4. A shunt trip and undervoltage release cannot both be installed in the same breaker.
5. Ground fault protection cannot be used on feeder breakers.
6. MicroVersaTrip Plus™ and MicroVersaTrip PM™ breakers are not available as feeder devices.



**GE Industrial Systems**

**Jiffy III Utility Service Entrance Switchboard**  
Single Section with Pull on Right

Date: \_\_\_\_\_

Prop #: \_\_\_\_\_

Project: \_\_\_\_\_

Drawn by: \_\_\_\_\_

PO # / Item #: \_\_\_\_\_

**Service:** \_\_\_\_\_ Volts, \_\_\_\_\_ Ø, \_\_\_\_\_ W

**Main Incoming Breaker**

Type: \_\_\_\_\_ Poles: \_\_\_\_\_

Frame Rating: \_\_\_\_\_ Amperes

Trip Rating: \_\_\_\_\_ Amperes

**Main Incoming Cable:**

\_\_\_\_\_ per Ø and N

**Utility CT Type:** Bar

**Bussing**

Amperes: 1200

Tin-Plated Aluminum

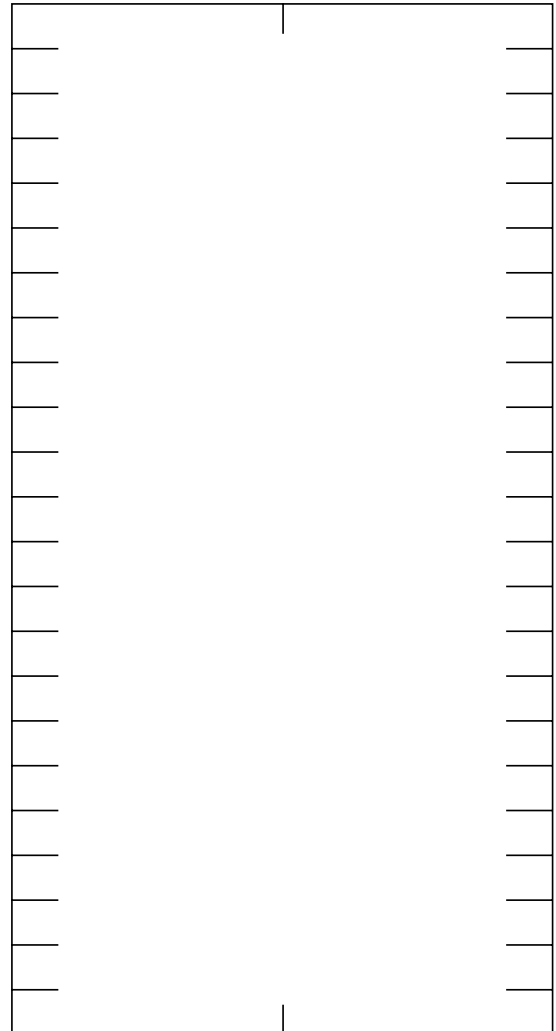
Bracing: 65 kA (limited to device ratings)

**Short-Circuit Rating:** \_\_\_\_\_ kA RMS Sym. (65 kA max.)

**Enclosure:** NEMA1 with Driphood

**Trim Color:** ANSI 61 Grey

**Notes:**



23X Panel Layout  
Bolt-On Breakers  
1X = 1.375" (35 mm)

Refer to Panelboard section of  
current BuyLog for device X height.

Customer: \_\_\_\_\_

Customer # \_\_\_\_\_

Distributor: \_\_\_\_\_

Distributor # \_\_\_\_\_

Project: \_\_\_\_\_

Preliminary for Approval

Consultant: \_\_\_\_\_

Approved for Construction

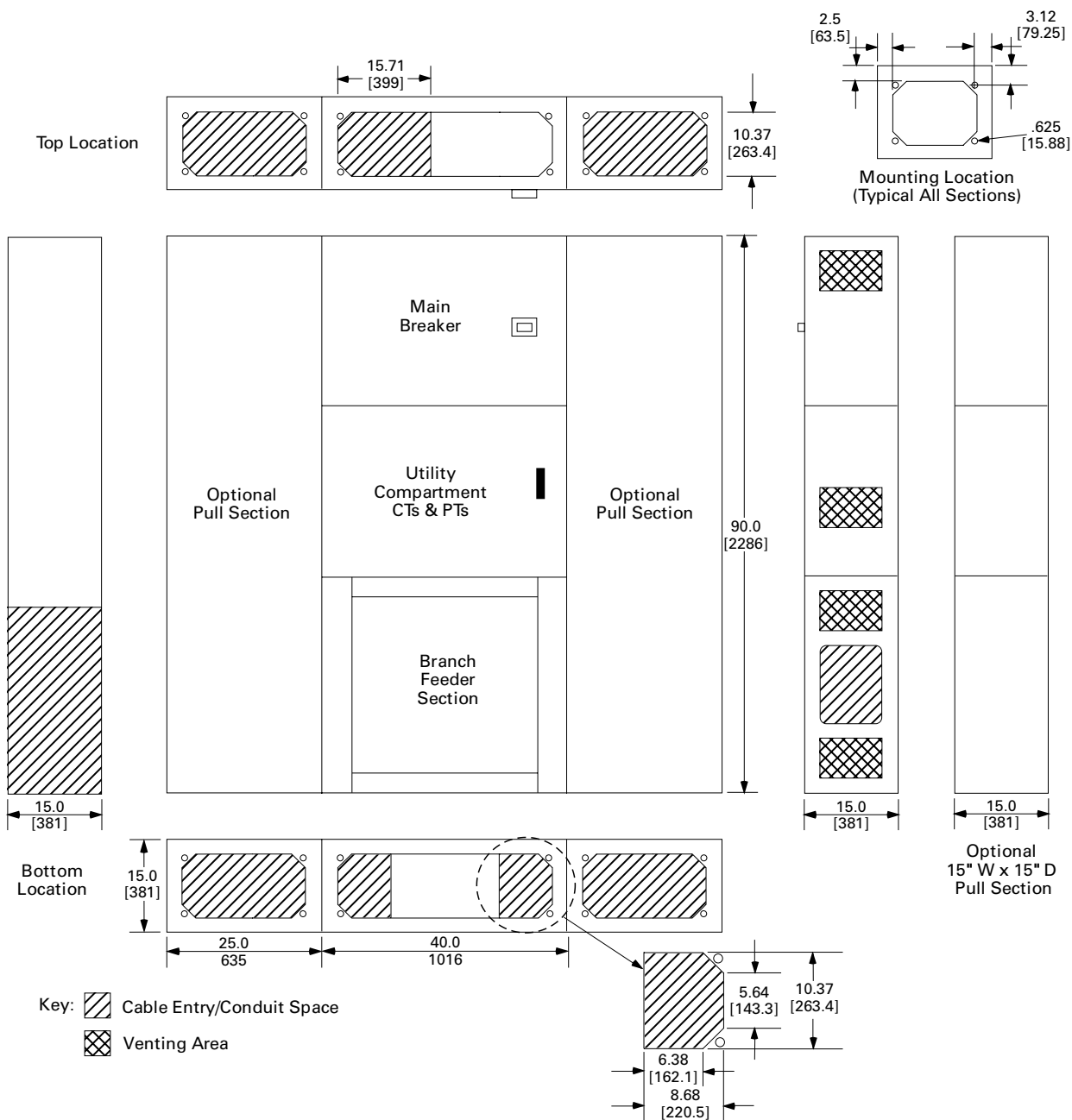


**GE Industrial Systems**

**Jiffy III Utility Service Entrance Switchboard**  
Single Section with Pull on Right and Left

Date: \_\_\_\_\_ Prop #: \_\_\_\_\_ Project: \_\_\_\_\_

Drawn by: \_\_\_\_\_ PO # / Item #: \_\_\_\_\_



**Notes:**

1. Dimensions are given in inches [mm].
2. 100% rated, 1000 A switchboards must be mounted at least 1 inch from the rear wall for proper ventilation.
3. No 100% feeder breakers may be used.
4. A shunt trip and undervoltage release cannot both be installed in the same breaker.
5. Ground fault protection cannot be used on feeder breakers.
6. MicroVersaTrip Plus™ and MicroVersaTrip PM™ breakers are not available as feeder devices.



**GE Industrial Systems**

**Jiffy III Utility Service Entrance Switchboard**  
Single Section with Pull on Right and Left

Date: \_\_\_\_\_

Prop #: \_\_\_\_\_

Project: \_\_\_\_\_

Drawn by: \_\_\_\_\_

PO # / Item #: \_\_\_\_\_

**Service:** \_\_\_\_\_ Volts, \_\_\_\_\_ Ø, \_\_\_\_\_ W

**Main Incoming Breaker**

Type: \_\_\_\_\_ Poles: \_\_\_\_\_

Frame Rating: \_\_\_\_\_ Amperes

Trip Rating: \_\_\_\_\_ Amperes

**Main Incoming Cable:**

\_\_\_\_\_ per Ø and N

**Utility CT Type:** Bar

**Bussing**

Amperes: 1200

Tin-Plated Aluminum

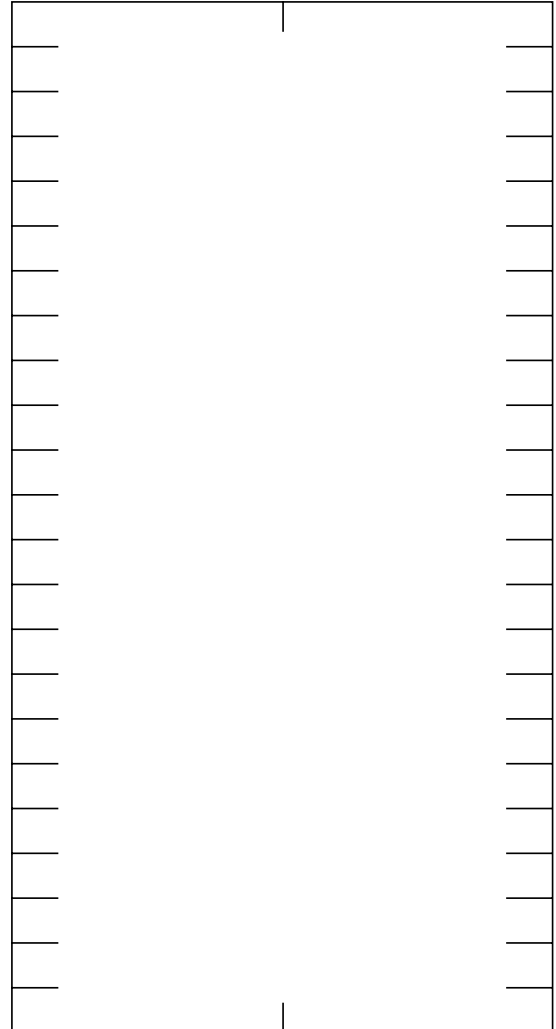
Bracing: 65 kA (limited to device ratings)

**Short-Circuit Rating:** \_\_\_\_\_ kA RMS Sym. (65 kA max.)

**Enclosure:** NEMA1 with Driphood

**Trim Color:** ANSI 61 Grey

**Notes:**



23X Panel Layout  
Bolt-On Breakers  
1X = 1.375" (35 mm)

Refer to Panelboard section of  
current BuyLog for device X height.

Customer: \_\_\_\_\_

Customer # \_\_\_\_\_

Distributor: \_\_\_\_\_

Distributor # \_\_\_\_\_

Project: \_\_\_\_\_

Preliminary for Approval

Consultant: \_\_\_\_\_

Approved for Construction