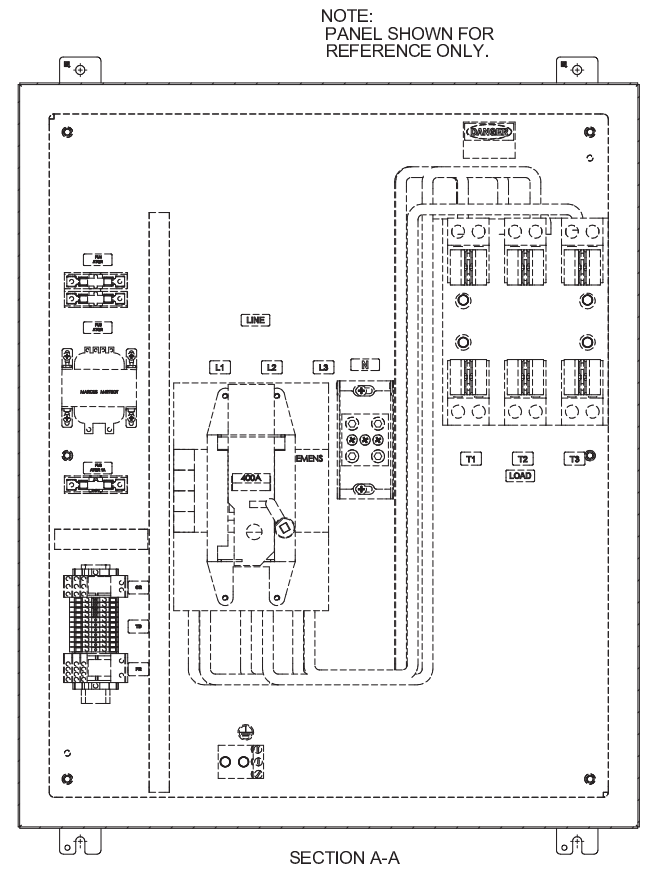
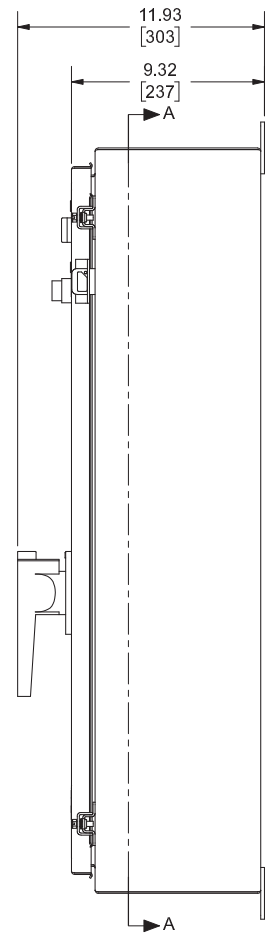
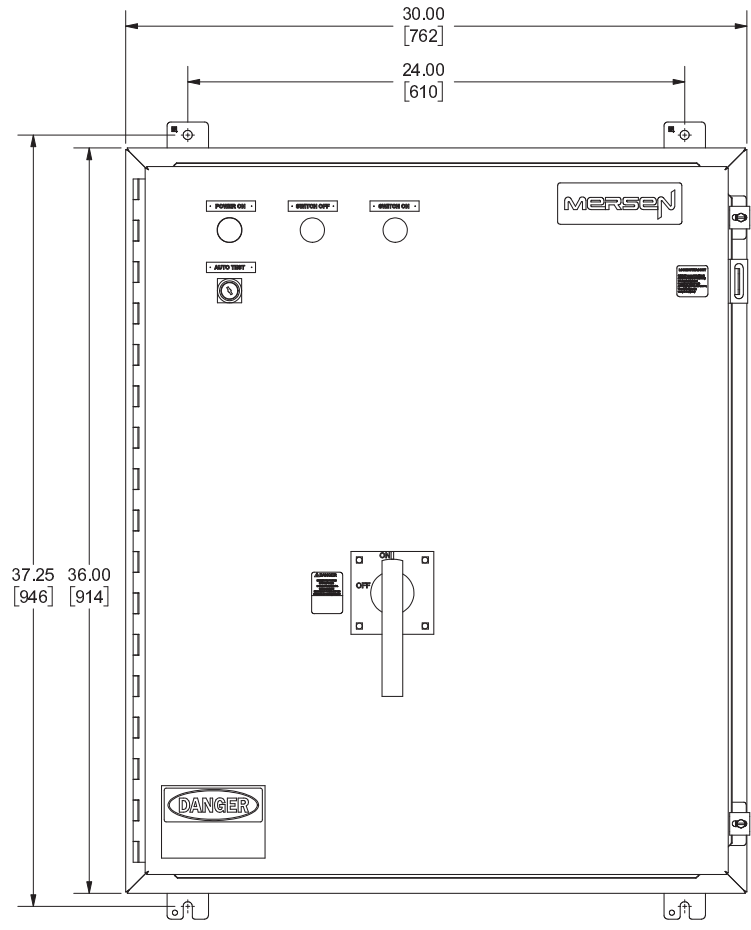


REV.	DATE	ECO	DESCRIPTION	BY	CK	APP
------	------	-----	-------------	----	----	-----



- GENERAL NOTES:**
1. TEST ALL FUNCTIONS IN ACCORDANCE WITH SSI T00001.
 2. PACK ALL SWITCH DOCUMENTATION INSIDE ENCLOSURE.
 3. PACK ENCLOSURE DOCUMENTATION INSIDE ENCLOSURE.
 4. PACK ELECTRICAL DIAGRAM INSIDE ENCLOSURE.
 5. PACK ARC FLASH LABEL #99452 INSIDE ENCLOSURE.

Preliminary Drawing
 Not to be used w/o approval
 Use for _____ only.
 Approval _____
 Date 17/06/2016

MERSEN		GENERAL NOTES: ALL DIMENSIONS IN INCHES (mm). TOLERANCE TO BE APPLIED UNLESS OTHERWISE SPECIFIED. .XXXX ±.0005, .000 ±.005, .XX ±.010, .X ±.020, .XX ±.164. UNSPECIFIED ANGLES ± 1°. SPECIFIED ANGLES ± 0°30'. DIMENSIONS APPLY AFTER PLATING. ALL SURFACES TO BE UNLESS OTHERWISE SPECIFIED. BREAK ALL SHARP EDGES.	
MERSEN CANADA TORONTO INC. 3200 KESWEL ROAD, MISSISSAUGA, ONTARIO, L5T 1Z1			
THIS DRAWING AND ALL INFORMATION THEREIN IS THE PROPERTY OF MERSEN CANADA TORONTO INC. AND IS SUBJECT TO RETURN ON DEMAND. THIS INFORMATION IS CONFIDENTIAL AND MUST NOT BE MADE PUBLIC OR REPRODUCED IN ANY MANNER WITHOUT THE WRITTEN PERMISSION OF MERSEN CANADA TORONTO INC.			
DRAWN BY:	DATE:	CHECKED BY:	DATE:
GO	06.17.1	DZH	06.17.16
ENGINEERING APPROVED	DATE:	MFG REF.:	
FOR MFG:		FILE #:	ES4TENC2-1.DRW
ENGINEERING APPROVED	DATE:	INITIAL RELEASE ECO NO:	SCALE:
AS BUILT:			1:6
DESCRIPTION:	ENCLOSURE ASSY, ES4T, TYPE 12		PART NO. (WHEN DIFFERENT THAN DWG.)
DRAWING/PART NUMBER	ES4TENC2		REV.:
			SHEET 1 OF 1