

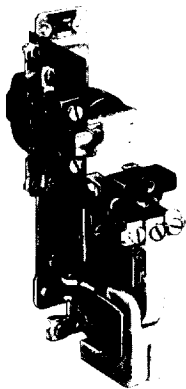
RENEWAL PARTS



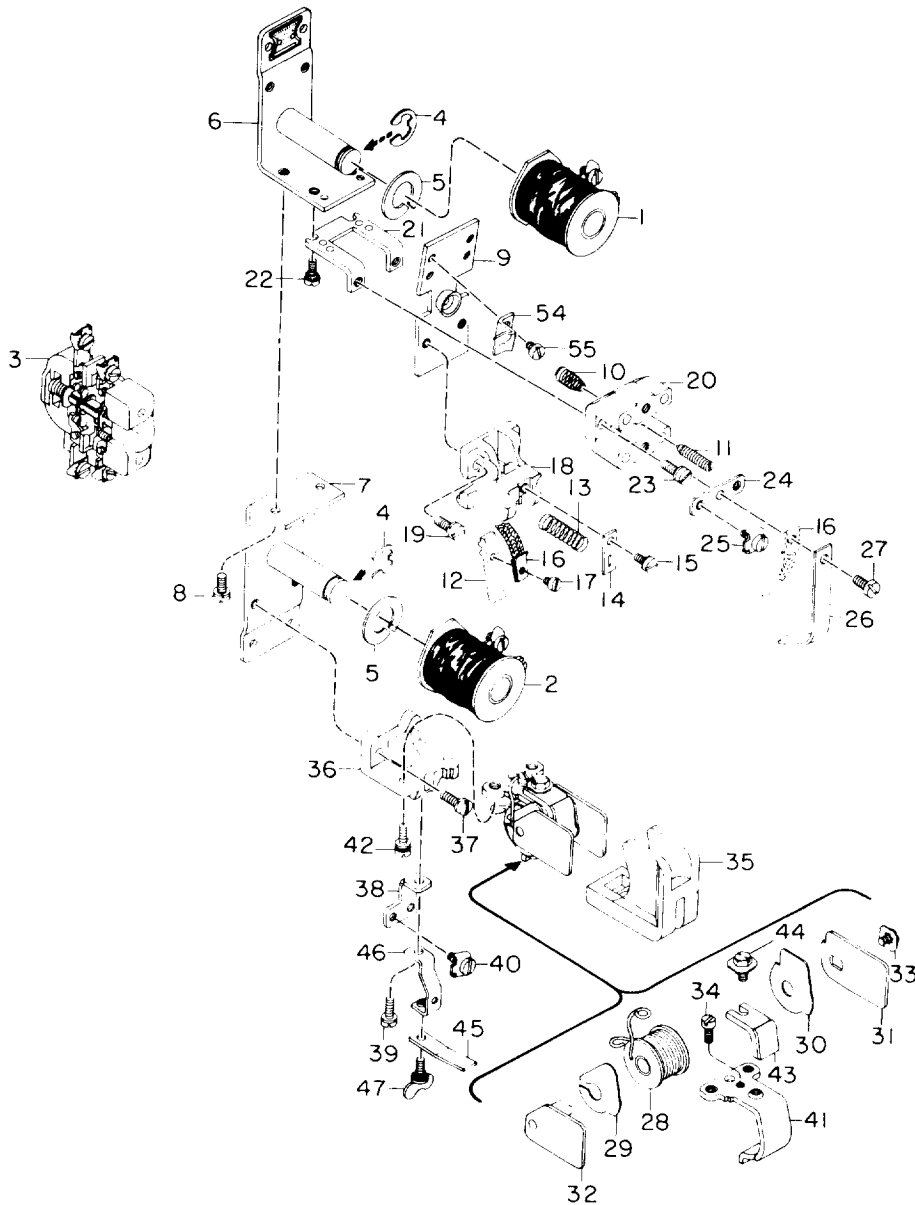
DS2800-1608 CONTACTORS

Forms A thru AM

NOTE:—When ordering parts for a form of the contactor not covered by this bulletin, give reference number, description of part, complete nameplate reading, and above bulletin (GEF) number. Do not use catalog number when form for which the parts are needed is not covered by the bulletin.



DS2800-1608E contactor



When ordering renewal parts, give quantity, catalog number, description of each item required, and complete nameplate reading.

GENERAL ELECTRIC

DS2800-1608 CONTACTORS

PARTS RECOMMENDED FOR NORMAL STOCK

Ref. No.	Number Required for DS2800-1608-													Catalog Number	Description
	A	B	C	D	E AE	F AF	G AG	H AH	J AJ	K AK	L AL	M AM	T		
1	1	1	1	1	1	1	1	1	1	1	1	1	1	-----	Operating coil (see table below)
2	2	-	2	-	2	-	2	-	2	-	2	-	-	-----	Holding coil
	Δ	Δ	Δ	Δ	Δ	Δ	Δ	Δ	Δ	Δ	Δ	Δ	Δ	-----	Set of interlock contacts (see table on page 3)
12	1	1	1	1	1	1	1	1	1	1	1	1	1	6974772G1	Movable contact finger
43	1	1	1	1	1	1	1	1	1	1	1	1	1	6973075G1	Stationary contact
13	1	1	1	1	1	1	1	1	1	1	1	1	1	2419451	Compression spring for movable contact finger
10	1	1	1	1	1	1	1	1	1	1	1	1	1	2418822	Compression spring for armature
16	1	1	1	1	1	1	1	1	1	1	1	1	1	9043178G1	Shunt for movable contact finger
35	-	-	1	1	1	1	1	1	1	1	1	1	1	8650772P1	Arc chute

Δ If interlock is used, one set is required for each interlock.

OPERATING COILS, HOLDING COILS, PICK UP RESISTORS, AND RECTIFIERS

NOTE: The number following the form letters in the IC designation identifies the operating coils, pick up resistor and rectifiers. Each must be ordered separately from the table below.

EXAMPLE: DS2800-1608-B-3-B requires coil number 3 Cat. No. 1D106G3A, pick up resistor 3000DA/X131AE, rectifier 6RS22PD12AHD1.

Coil No.	Coil Catalog No.	No. Req'd	Pick Up Resistor IC9006A50E	No. Req'd	Rectifier	No. Req'd
2	1D106G2A	1	-----	-	-----	-
2	1D106G2A	1	4600DA/X131AE	1	6RS22PD12AHD1	2
2	1D106G2A	1	5000DA/X131AE	1	6RS22PD12AHD1	2
2	1D106G2A	1	-----	-	IC3500A403C8	1
2	1D106G2A	1	A50E4000DA-TH	1	IC3500A403C5	-
2	1D106G2A	1	A50E6500DA-TH	1	IC3500A403C8	1
2	1D106G2A	1	A50E4000DA-TH	1	IC3500A403C5	1
2	1D106G2A	1	A50E6500DA-TH	1	IC3500A403C8	1
3	1D106G3A	1	-----	-	-----	-
3	1D106G3A	1	3000DA/X131AE	1	6RS22PD12AHD1	1
3	1D106G3A	1	1200DA/X131AL	1	6RS22PD12AHD1	2
3	1D106G3A	1	2300DA/X131AE	1	6RS22PD12AHD1	2
3	1D106G3A	1	2800DA/X131AE	1	6RS22PD12AHD1	2
4	1D106G4A	1	-----	-	6RS22PD12AHD1	2
5	1D106G5A	1	-----	-	-----	-
6	1D106G6A	1	-----	-	-----	-
7	1D106G7A	1	-----	-	-----	-
7	1D106G7A	1	A50E200DA-TH	1	IC3500A403C2	1
7	1D106G7A	1	A50E200DA-TH	1	IC3500A403C2	-
8	1D106G8A	1	-----	-	-----	-
8	1D106G8A	1	A50E750DA-TH	1	IC3500A403C5	1
9	1D106G9A	1	-----	-	-----	-
9	1D106G9A	1	150DA/X131AL	1	6RS22PB3AHD1	1
9	1D106G9A	1	750DA/X131AL	1	6RS22PB3AHD1	1
9	1D106G9A	1	330DA/X131AE	1	6RS22PB6AHD1	1
9	1D106G9A	1	A50E300DA-TH	1	IC3500A403C6	1
10	1D106G10A	1	-----	-	-----	-
10	1D106G10A	1	90DA/X131AE	1	6RS22PB3AHD1	1
10	1D106G10A	1	A50E75DA-TH	1	IC3500A403C2	1
11	1D106G11A	1	-----	-	-----	-
12	1D106G12A	1	-----	-	-----	-
13	1D106G45A	1	-----	-	-----	-
14	1D106G14A	1	-----	-	-----	-
15	1D106B15A	1	-----	-	-----	-
16	Do not use - use G2	1	-----	-	-----	-
17	Do not use - use G3	1	-----	-	-----	-
18	1D106G18A	1	-----	-	-----	-
19	1D106G2A	1	-----	-	-----	-
20	1D106G2A	1	∅	-	-----	-
21	1D106G21A	1	†	-	-----	-
22	1D106G22A	1	-----	-	-----	-

∅ Requires 6000 ohm resistor. Cat. No. of coil does not include resistor.
 † Requires 1000 ohm resistor. Cat. No. of coil does not include resistor.

DS2800-1608 CONTACTORS

GEF-3788

OPERATING COILS, HOLDING COILS, PICK UP RESISTORS, AND RECTIFIERS (CONT'D)

Coil No.	Coil Catalog No.	No. Req'd	Pick Up Resistor IC9006A50E	No. Req'd	Rectifier	No. Req'd
23	1D106G23A	1				
24	1D106G24A	1	-----	-	-----	-
25	1D106G25A	1	-----	-	-----	-
26	1D106G26A	1	-----	-	-----	-
27	1D106G27A	1	-----	-	-----	-
28	1D106G28A	1	-----	-	-----	-
29	1D106G29A	1	-----	-	-----	-
30	1D106G30A	1	-----	-	-----	-
31	Do not use - use G2	1	-----	-	-----	-
32	1D106G93A	1	-----	-	-----	-
33	1D106G33A	1	-----	-	-----	-
34	1D106G34A	1	-----	-	-----	-
35	1D106G35A	1	-----	-	-----	-
36	1D106G36A	1	-----	-	-----	-
37	1D106G2A	1	-----	-	-----	-
38	1D106G2A	1	Δ	-	-----	-
39	1D106G2A	1	Δ	-	-----	-
40	1D106G2A	1	oo	-	-----	-
41	1D106G37A	1	o	-	-----	-
42	1D106G41A	1	-----	-	-----	-
43	1D106G42A	1	-----	-	-----	-
43	1D106G42A	1	-----	-	-----	-
43	1D106G42A	1	A50E500DA-TH	1	IC3500A403C6	-
44	1D106G43A	1	A50E500DA-TH	1	IC3500A403C6	1
45	1D106G40A	1	-----	-	-----	1
46	1D106G46A	1	-----	-	-----	-
47	1D106G47A	1	-----	-	-----	-
48	1D106G49A	1	-----	-	-----	-
49	1D106G48A	1	-----	-	-----	-
50	1D106G2A	1	-----	-	-----	-
52	1D106G38A	1	††	-	-----	-
53	1D106G44A	1	-----	-	-----	-
54	1D106G50A	1	-----	-	-----	-
55	1D106G51A	1	-----	-	-----	-
102	1D106G102	1	-----	-	-----	-
103	1D106G103	1	-----	-	-----	-
104	1D106G104	1	-----	-	-----	-
105	1D106G105	1	-----	-	-----	-
† 202	1D106G2A	2	-----	-	-----	-
† 203	1D106G3A	2	-----	-	-----	-
† 204	1D106G2A	2	-----	-	-----	-
† 205	1D106G2A	2	Δ	-	-----	-
† 206	1D106G13A	2	∅	-	-----	-
† 207	1D106G2A	2	-----	-	-----	-
† 208	1D106G9A	2	-----	-	-----	-
† 209	1D106G13A	2	-----	-	-----	-
† 209	1D106G3A	2	-----	-	-----	-
† 210	1D106G2A	2	-----	-	-----	-
† 211	1D106G7A	2	-----	-	-----	-
† 211	1D106G2A	2	-----	-	-----	-
† 212	1D106G3A	2	ΔΔ	-	-----	-
† 212	1D106G13A	2	-----	-	-----	-
† 213	1D106G2A	2	-----	-	-----	-
† 214	1D106G3A	2	-----	-	-----	-
† 214	1D106G8A	2	-----	-	-----	-
† 215	1D106G41A	2	-----	-	-----	-
† 215	1D106G40A	2	-----	-	-----	-
502	1D106G2A	1	-----	-	-----	-
503	1D106G3A	1	-----	-	-----	-
602	1D106G2A	2	-----	-	-----	-
650	1D106G7A	1	-----	-	-----	-
651	1D106G42A	1	-----	-	-----	-
652	1D106G2A	1	-----	-	-----	-
653	1D106G2A	1	-----	-	-----	-

o Requires 2000 ohm resistor. Cat. No. of coil does not include resistor.
 †† Requires 1500 ohm resistor. Cat. No. of coil does not include resistor.
 Δ Requires 4000 ohm resistor. Cat. No. of coil does not include resistor.
 ∅ Requires 6000 ohm resistor. Cat. No. of coil does not include resistor.
 ΔΔ Requires 4500 ohm resistor. Cat. No. of coil does not include resistor.
 † Holding coils.

DS2800-1608 CONTACTORS

Ref. No.	Number Required for DS2800-1608-													Catalog Number	Description	
	A	B	C	D	E	F	G	H	J	K	L	M	T			
41	-	-	1	1	1	1	1	1	1	1	1	1	1	1	8650775P4	Support for stationary contact tip
42	2	2	2	2	2	2	2	2	2	2	2	2	2	2	N144P16008C	Screw with lock washer fastening stationary contact tip support to insulation base
43	1	1	1	1	1	1	1	1	1	1	1	1	1	1	6973075G1	Stationary contact tip
44	1	1	1	1	1	1	1	1	1	1	1	1	1	1	9384190P1	Screw with lock washer fastening stationary contact tip to support
45	-	-	1	1	1	1	1	1	1	1	1	1	1	1	8650771P6	Clamp for arc chute (Forms C thru M only)
46	-	-	1	1	1	1	1	1	1	1	1	1	1	1	8650771P5	Supporting bracket for clamp (Forms C thru M only)
47	-	-	1	1	1	1	1	1	1	1	1	1	1	1	9693202P1	Wing screw fastening clamp to supporting bracket (Forms C thru M only)

**GENERAL ELECTRIC COMPANY • COMPONENT AND DEVICES SALES
DRIVE SYSTEMS DEPARTMENT • SALEM, VA 24153**

DS2800-1608 CONTACTORS

GEF-3788

ELECTRICAL INTERLOCKS

NOTE: The interlock is identified by the letter, or letter and number, following the coil number in the IC designation.
 EXAMPLES: DS2800-1608-A-2-3-B requires interlock letter B, Cat. No. IC2956A200G.
 DS2800-1608-A-2-3-XI requires interlock letter and number XI, Cat. No. 6927495G5.

Interlock Letter	Ref. No. 3 Interlock Switch Unit Cat. No.	Mounting Kit Cat. No.	*Set of Interlock Contacts Cat. No.	Interlock Letter	Ref. No. 3 Interlock Switch Unit Cat. No.	Mounting Kit Cat. No.	*Set of Interlock Contacts Cat. No.
B	IC2956A200G	IC2956A202J	6960053G2	BD	IC2956A205E	IC2956A202J	6960053G25
C	IC2956A200G	IC2956A202K	6960053G2	BE	IC2956A205E	IC2956A202K	6960053G25
D	IC2956A200H	IC2956A202J	6960053G2	BF	IC2956A205A	IC2956A202J	6960053G3
E	IC2956A200H	IC2956A202K	6960053G2	BG	IC2956A205A	IC2956A202K	6960053G3
F	IC2956A200A	IC2956A202J	6960053G3	BH	IC2956A205C	IC2956A202J	6960053G3
G	IC2956A200A	IC2956A202K	6960053G3	BJ	IC2956A205C	IC2956A202K	6960053G3
H	IC2956A200C	IC2956A202J	6960053G3	BK	IC2956A205B	IC2956A202J	6960053G3
J	IC2956A200C	IC2956A202K	6960053G3	BL	IC2956A205B	IC2956A202K	6960053G3
K	IC2956A200B	IC2956A202J	6960053G3	DB	IC2956A205D	IC2956A202J	6960053G25
L	IC2956A200B	IC2956A202K	6960053G3	DC	IC2956A205D	IC2956A202K	6960053G25
M	IC2956A200AJ	IC2956A202L	6960053G3	DD	IC2956A205E	IC2956A202K	6960053G25
N	IC2956A200AG	IC2956A202J	6960053G3	DE	IC2956A205E	IC2956A202J	6960053G25
P	IC2956A200AG	IC2956A202K	6960053G3	DF	IC2956A205A	IC2956A202K	6960053G25
R	IC2956A200AH	IC2956A202J	6960053G3	DG	IC2956A205A	IC2956A202J	6960053G3
S	IC2956A200AK	IC2956A202K	6960053G3	DH	IC2956A205C	IC2956A202K	6960053G3
T	IC2956A200AH	IC2956A202J	6960053G22	DJ	IC2956A205C	IC2956A202J	6960053G3
U	IC2956A200AJ	IC2956A202K	6960053G3	DK	IC2956A205B	IC2956A202K	6960053G3
AB	IC2956A200AD	IC2956A202J	6960053G23	DL	IC2956A205B	IC2956A202J	6960053G3
AC	IC2956A200AD	IC2956A202K	6960053G23	X1	6927495G5		
AD	IC2956A200AE	IC2956A202J	6960053G23	X2	6927495G5	8201809G1	6960046G56
AE	IC2956A200AE	IC2956A202K	6960053G23	X3	6927495G4	8201809G2	6960046G56
AF	IC2956A200AA	IC2956A202J	6960053G22	X4	6927495G4	8201809G1	6960046G56
AG	IC2956A200AC	IC2956A202K	6960053G22	X5	6927495G2	8201809G2	6960046G56
AH	IC2956A200AC	IC2956A202J	6960053G23	X6	6927495G2	8201809G1	6960046G55
AJ	IC2956A200AC	IC2956A202K	6960053G23	X7	6927495G2	8201809G2	6960046G55
AK	IC2956A200AB	IC2956A202J	6960053G23	X8	6927495G3	8201809G1	6960046G55
AL	IC2956A200AB	IC2956A202K	6960053G23	X9	6927495G3	8201809G2	6960046G55
BB	IC2956A205D	IC2956A202J	6960053G25	X10	6927495G1	8201809G1	6960046G55
BC	IC2956A205D	IC2956A202K	6960053G25			8201809G2	6960046G55

* Includes movable and stationary contacts, spring, and contact-holding screws.

DS2800-1608 CONTACTORS

Number Required for DS2800-1608-

Ref. No.	Number Required for DS2800-1608-													Description
	A	B	C	D	E	F	G	H	J	K	L	M	T	
					AE	AF	AG	AH	AJ	AK	AL	AM		
4	2	1	2	1	2	1	2	1	2	1	2	1	1	Coil retainer
5	2	1	2	1	2	1	2	1	2	1	2	1	1	Lock washer for operating or holding coil
6	1	1	1	1	1	1	1	1	1	1	1	1	1	Magnet frame with core, upper
7	1	1	1	1	1	1	1	1	1	1	1	1	1	Magnet frame with core, lower
8	2	2	2	2	2	2	2	2	2	2	2	2	2	Screw with lock washer fastening lower magnet frame to upper magnet frame
9	1	1	1	1	1	1	1	1	1	1	1	1	1	Armature with spring seat and stop
10	1	1	1	1	1	1	1	1	1	1	1	1	1	Compression spring for armature
11	1	1	1	1	1	1	1	1	1	1	1	1	1	Adjusting screw for compression spring
12	1	1	1	1	1	1	1	1	1	1	1	1	1	Movable contact finger
13	1	1	1	1	1	1	1	1	1	1	1	1	1	Compression spring for movable contact finger
14	1	1	1	1	1	1	1	1	1	1	1	1	1	Support for compression spring
15	1	1	1	1	1	1	1	1	1	1	1	1	1	Screw with lock washer fastening spring support to molded support
16	1	1	1	1	1	1	1	1	1	1	1	1	1	Shunt for movable contact finger
17	1	1	1	1	1	1	1	1	1	1	1	1	1	Screw with lock washer fastening shunt to movable contact finger
18	1	1	1	1	1	1	1	1	1	1	1	1	1	Molded support for movable contact finger
19	2	2	2	2	2	2	2	2	2	2	2	2	2	Screw with lock washer fastening molded support to armature
20	1	1	1	1	1	1	1	1	1	1	1	1	1	Terminal block
21	1	1	1	1	1	1	1	1	1	1	1	1	1	Supporting bracket for terminal
22	2	2	2	2	2	2	2	2	2	2	2	2	2	Screw with lock washer fastening supporting bracket to magnet frame
23	2	2	2	2	2	2	2	2	2	2	2	2	2	Screw with lock washer fastening terminal block to supporting bracket
24	1	1	1	1	1	1	1	1	1	1	1	1	1	Connection strip for terminal block
25	2	2	2	2	2	2	2	2	2	2	2	2	2	Terminal clamp with screw and lock washer
26	-	-	-	-	-	-	-	-	-	-	-	-	-	Arcing horn
27	1	1	1	1	1	1	1	1	1	1	1	1	1	Screw with lock washer fastening connection strip, shunt, and arcing horn to terminal clamp
28	-	-	-	-	-	-	-	-	-	-	-	-	-	Blowout coil
28	-	-	-	-	-	-	-	-	-	-	-	-	-	Blowout coil
28	-	-	-	-	-	-	-	-	-	-	-	-	-	Blowout coil
28	-	-	-	-	-	-	-	-	-	-	-	-	-	Blowout coil
29	-	-	-	-	-	-	-	-	-	-	-	-	-	Blowout coil and support for stationary contact tip
30	-	-	-	-	-	-	-	-	-	-	-	-	-	Insulation for blowout coil, left-hand
31	-	-	-	-	-	-	-	-	-	-	-	-	-	Insulation for blowout coil, right-hand
31	-	-	-	-	-	-	-	-	-	-	-	-	-	Pole piece, right-hand (Forms C thru M only)
31	-	-	-	-	-	-	-	-	-	-	-	-	-	Pole piece, right-hand (Forms T thru AM only)
32	-	-	-	-	-	-	-	-	-	-	-	-	-	Pole piece with core, left-hand (Forms C thru M only)
32	-	-	-	-	-	-	-	-	-	-	-	-	-	Pole piece with core, left-hand (Forms T thru AM only)
33	-	-	-	-	-	-	-	-	-	-	-	-	-	Screw fastening pole piece and insulation to core
34	-	-	-	-	-	-	-	-	-	-	-	-	-	Screw with lock washer fastening blowout coil lead to contact tip support
35	-	-	-	-	-	-	-	-	-	-	-	-	-	Arc chute
36	1	1	1	1	1	1	1	1	1	1	1	1	1	Arc chute spring (Forms T thru AM only)
36	2	2	2	2	2	2	2	2	2	2	2	2	2	Spring cover (Forms T thru AM only)
37	-	-	-	-	-	-	-	-	-	-	-	-	-	Insulation base
38	-	-	-	-	-	-	-	-	-	-	-	-	-	Insulation base
39	-	-	-	-	-	-	-	-	-	-	-	-	-	Screw with lock washer fastening insulation base to magnet frame
40	1	1	1	1	1	1	1	1	1	1	1	1	1	Terminal support
41	1	1	1	1	1	1	1	1	1	1	1	1	1	Screw with lock washer fastening blowout coil lead and terminal support to insulation base
														Terminal clamp with screw and lock washer
														Support for stationary contact tip