

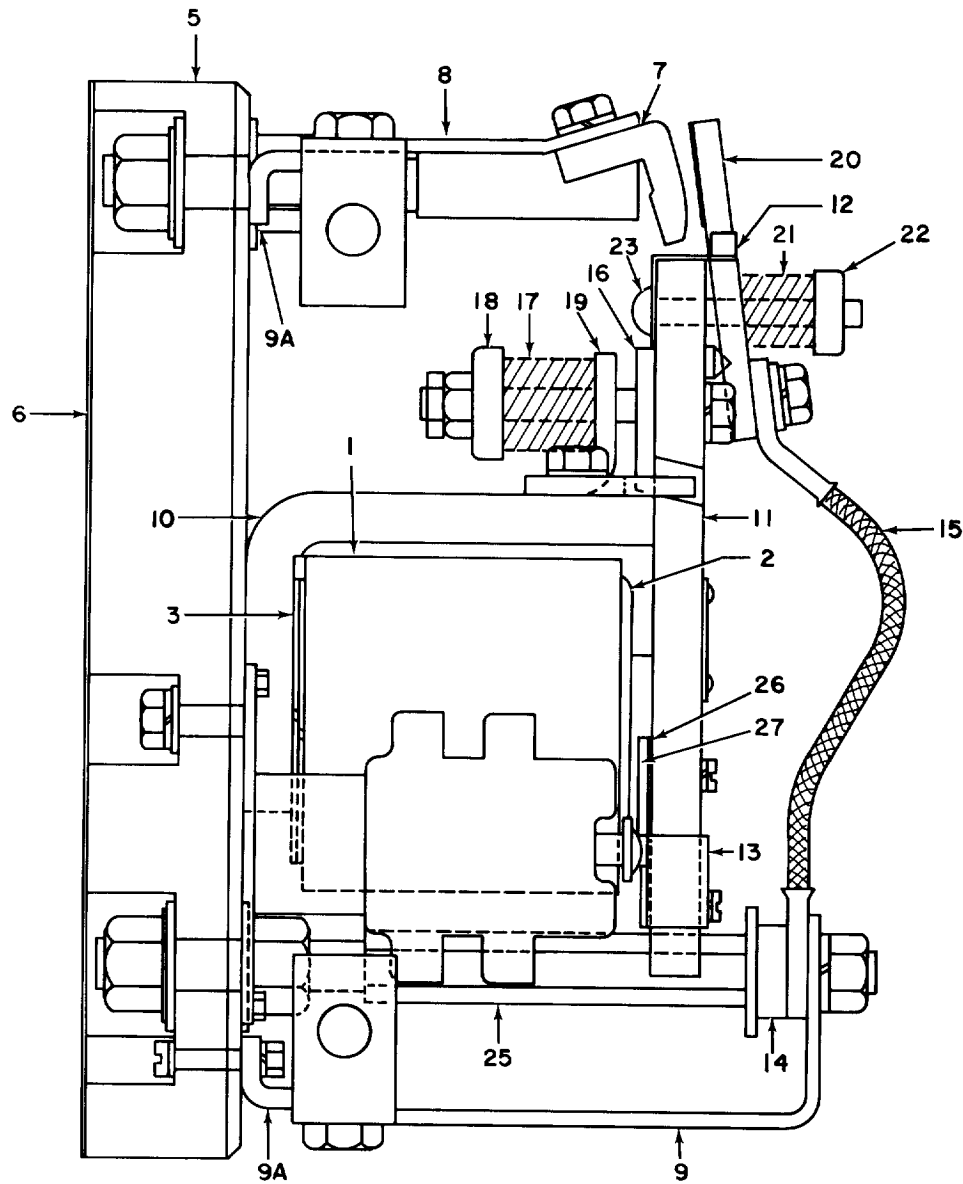


RENEWAL PARTS

IC2800-Y110 CONTACTORS

Forms A, B, C, D, E, F, and G

NOTE:—When ordering parts for a form of the contactor not covered by this bulletin, give reference number, description of part, complete nameplate reading, and above bulletin (GEF) number. Do not use catalog number when form for which the parts are needed is not covered by the bulletin.



IC2800-Y109 Contactor parts

When ordering renewal parts, give quantity, catalog number, description of each item required, and complete nameplate reading.

GENERAL  ELECTRIC

IC2800-Y110 CONTACTORS

PARTS RECOMMENDED FOR NORMAL STOCK

Ref. No.	Catalog Number	No. Req'd.	Description
1	-----	1	Operating coil (See Table below)
*	6960053G3	1	Set interlock contacts, springs and screws
7	287A160G1	1	Stationary contact tip
15	4953035G1	1	Shunt
17	144A1386P1	1	Tension spring for armature
20	4953034	1	Movable contact tip
21	2414331	1	Compression spring for movable contact tip

Ref. No. 1 OPERATING COILS - 1 Required

NOTE: The operating coil is identified by the number following the form letter in the IC designation.

EXAMPLE: IC2800-Y110-A-2 requires coil No. 2 Cat. No. 22D14G24A

Coil No.	Catalog Number	Coil No.	Catalog Number	Coil No.	Catalog Number	Coil No.	Catalog Number
2	†22D14G24A	5	†22D14G29A	8	†22D14G12A	11	22D16G45
3	†22D14G26A	6	†22D14G30A	9	†22D14G32A	12	22D16G46
4	†22D14G27A	7	†22D14G23A	10	22D16G44	13	†22D14G12A

† Requires one copper jacket, Cat. No. 2494628.

COMPLETE LIST OF PARTS ‡

Ref. No.	Catalog Number	No. Req'd.	Description
2	1400212	1	Retainer for operating coil
3	8626009P14	2	Lock washer for operating coil
4	723B245G6	1	Interlock assembly, complete for forms A, C, D, and F
4	723B245G4	1	Interlock assembly, complete for forms B, E, and G
	IC2956A200A	1	Interlock switch unit
	6960053G3	1	Set of interlock contactsΔ
5	118B3144P1	1	Base
6	118B3144P2	1	Insulation for base
7	287A160G1	1	Stationary contact tip
8	118B3146P1	1	Bus bar, upper
9	118B3146P2	1	Bus bar, lower
9A	162A2829P1	2	Bus support
10	4954554G2	1	Magnet frame with core
11	8627460	1	Armature assembly
12	5300386	1	Armature guide
13	575A557P3	1	Operating arm
14	2496754	1	Armature stop
15	4953035G1	1	Shunt
16	4953005G2	1	Fulcrum and stud assembly
17	144A1386P1	1	Tension spring for armature
18	2446649	1	Spring seat
19	4951567	1	Spring support
20	4953034	1	Movable contact tip
21	2414331	1	Compression spring for movable contact tip
22	463692	1	Spring seat
23	2498333	1	Pin
24	5353233	1	Fulcrum pin
25	118B3145P1	1	Connection stud, upper
25A	118B3145P2	1	Connection stud, lower
26	8627461P1	1	Shim for armature for forms A and B only
26	188A5135	1	Shim for armature for form C only
26	8627461P2	1	Shim for armature for forms D, E, F and G only
	9098154P4	1	Shim for forms D and E only
27	8058928	1	Shim clamp

‡ Hardware listed on page 3.

Δ Includes movable and stationary contacts with springs and contact holding screws.

IC2800-Y110 CONTACTORS

GEF-4610

COMPLETE LIST OF HARDWARE

SCREWS

Cat. No.	Description
N22P23014B6	5/16 in. -18, 7/8 in. hex. hd., pro. fin.
N22P25016B6	3/8 in. -16, 1 in. hex. hd., pro. fin.
N57P16012B6	10-32, 3/4 in. pan hd, pro. fin.
N57P21012B6	1/4 in. -20, 3/4 in. pan hd, pro. fin.
N5723008B6	5/16 in. -18, 5/8 in. pan hd., pro. fin.
N75P15012	8-32, 3/4 in. pan hd., brass

PLAIN WASHERS

Cat. No.	Description
N402P9B6	For No. 10 screw
N402P12B6	For 5/16 in. screw
N402P13B6	For 3/8 in. screw
N402P73B6	For 3/8 in. wide

LOCK WASHERS

Cat. No.	Description
N403P16C6	For No. 8 screw, external tooth
N405P38B6	For No. 8 screw
N405P39B6	For No. 10 screw
N405P41B6	For 1/4 in. screw
N405P42B6	For 5/16 in. screw
N405P43B6	For 3/8 in. screw

NUTS

Cat. No.	Description
N210P15B6	8-32, hex.
N210P16B6	10-32, hex.
N210P23B6	5/16 in. -18, hex.
N213P23B6	5/16 in. -18, Jam
N245P25B6	3/8 in. -16, hex.

**GENERAL ELECTRIC COMPANY
INDUSTRIAL CONTROL DEPARTMENT
SALEM, VA. 24153**

GENERAL  ELECTRIC