



Walking Beam Interlock

For K-1200 Line Breakers, Types TKM & THKM

Drill Plunger Holes in the Breakers

1. Set the breakers in the OFF or TRIPPED position. This is absolutely necessary to prevent the drill from damaging the breaker contact arms.
2. Drill a $\frac{9}{16}$ "-diameter hole through the rear of the breaker cases, as shown in Figure 1.

NOTE: The location of the hole must be accurate to prevent damaging the breaker mechanism.

3. After drilling the holes, turn the breakers over, remove the front covers, and carefully clean out the drilling debris from inside the cases.
4. Replace the breaker front covers and tighten the screws.

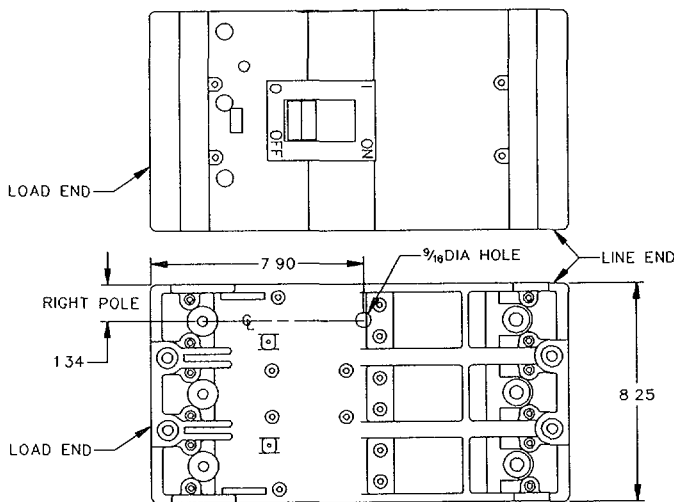


Figure 1. Types TKM and THKM breakers, showing the location of the hole to be drilled in the rear of the breaker case.

Drill Holes in the Mounting Panel

1. Drill two $\frac{9}{16}$ "-diameter holes 8.50" on center in the mounting panel, as shown in Figure 2.

NOTE: The maximum overall mounting panel thickness is 1 inch.

2. Drill two $\frac{7}{16}$ "-diameter holes 3.00" on center in the mounting panel.
3. Counterbore the two $\frac{7}{16}$ "-diameter holes drilled in step 2 so that a $\frac{3}{8}$ " hex bolt head will fit flush with the front of the panel.

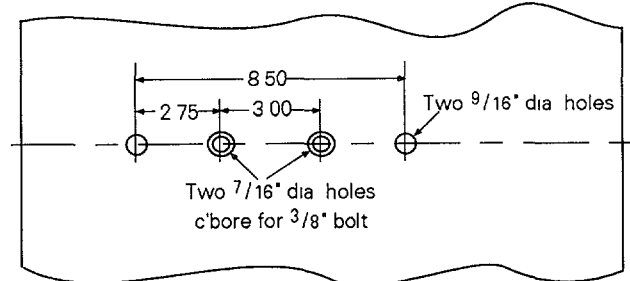


Figure 2. Front of the mounting panel, showing the locations of the mounting holes to be drilled.

Mount the Walking Beam Interlock

1. Mount the interlock with two $\frac{3}{8}$ " hex bolts, as shown in Figure 3. A socket wrench may be used to tighten the nuts, as shown.
2. Ensure that the plungers can move freely in the $\frac{9}{16}$ "-diameter holes through the mounting panel.

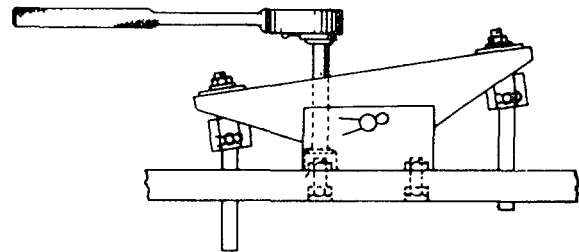


Figure 3. Installing the walking beam interlock on the mounting panel.

Mount the Breakers

1. Before mounting the breakers on the panel, set both to the OFF position.
2. Remove the breaker end shields and mount the breakers on the panel, ensuring that the interlock plungers move freely in the holes drilled through the rears of the breaker cases. See Figure 4.

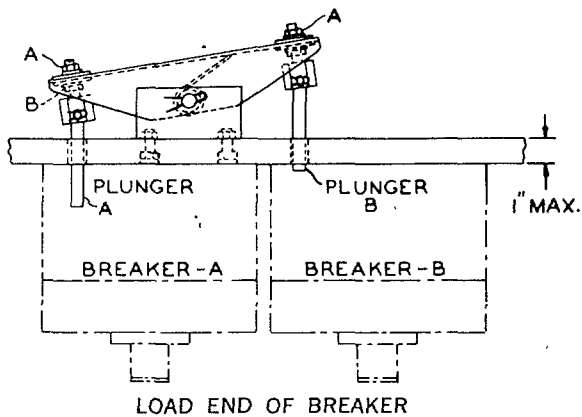


Figure 4. Breakers mounted on the panel, showing the interlock plungers moving in the holes in the breaker cases

Check the Interlock Operation.

Set one breaker in the ON position. The interlock should now prevent the second breaker from being turned ON. If both breakers can be set in the ON position at the same time, it will be necessary to adjust the plungers. This operation is described in the next step.

Adjust the Plungers

1. Set both breakers in the OFF position.
2. Back off nuts A and B on plunger A to the last few threads, as shown in Figure 4.
3. Push plunger A into breaker A as far as it will go. The end of the plunger should butt against the breaker contact arm.
4. Fix the plunger in this position by tightening nut B first, then tightening nut A.
5. Set breaker A in the ON position.
6. With breaker B still in the OFF position, repeat steps 2, 3, and 4 to adjust plunger B.

Important

Check the operation again. The interlock should prevent both breakers from being in the ON position at the same time.

These instructions do not cover all details or variations in equipment nor do they provide for every possible contingency that may be met in connection with installation, operation, or maintenance. Should further information be desired or should particular problems arise that are not covered sufficiently for the purchaser's purposes, the matter should be referred to your local GE ED&C Sales Office.



GE Electrical Distribution & Control

General Electric Company
41 Woodford Ave., Plainville, CT 06062