



# Installation of Walking Beam Interlock

TYPE TFJ

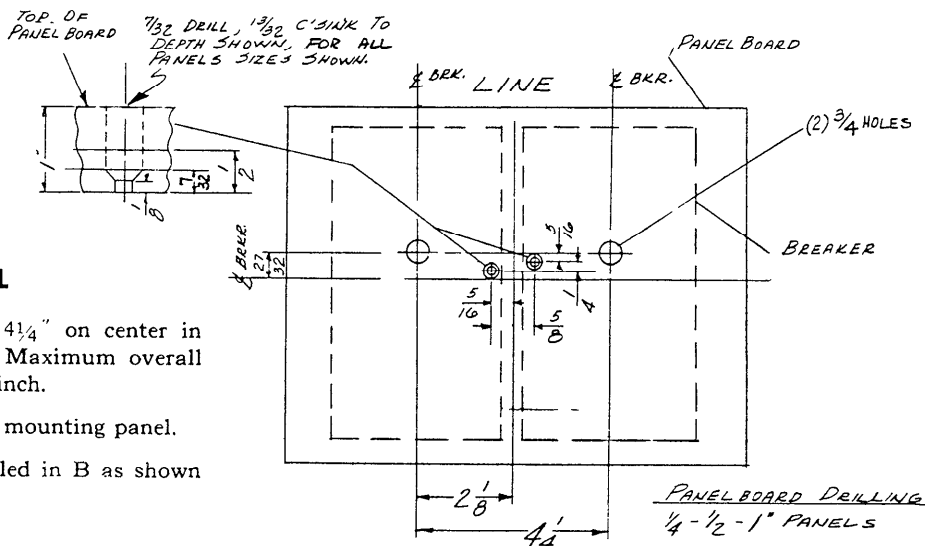


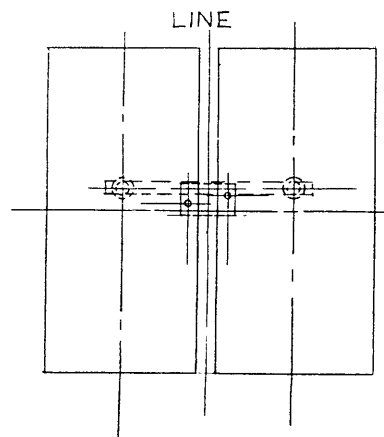
Fig. 1

## STEP 1 DRILL HOLES IN MOUNTING PANEL

- A. Drill two  $\frac{3}{4}$ " diameter holes  $4\frac{1}{4}$ " on center in mounting panel. (See Fig. 1) Maximum overall mounting panel thickness is 1-inch.
- B. Drill two  $\frac{1}{2}$ " diameter holes in mounting panel.
- C. Counterbore two  $\frac{1}{2}$ " holes drilled in B as shown in Fig. 1.

## STEP 2 MOUNT WALKING BEAM INTERLOCK

- A. Mount interlock as shown in Fig. 2 with 10-32 flat head screws.
- B. Make sure plungers can move freely in  $\frac{3}{4}$ " holes through mounting panel.



## STEP 3 MOUNT BREAKERS

Before mounting breakers on panel, set in OFF position.

## STEP 4 CHECK OPERATION

Set one breaker in ON position. Interlock should now prevent the second breaker from being turned ON. If both breakers can be set in ON position at the same time, it is necessary to adjust the interlock for proper depth. See Fig. 2.

### IMPORTANT

Check operation again. Interlock should permit only one breaker in ON position at a time.

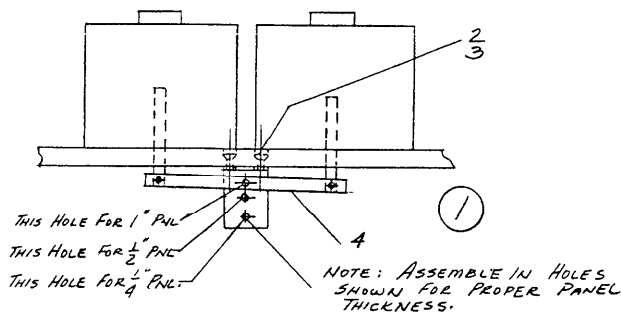


Fig. 2

These instructions do not purport to cover all details or variations in equipment nor to provide for every possible contingency to be met in connection with installation, operation or maintenance. Should further information be desired or should particular problems arise which are not covered sufficiently for the purchaser's purposes, the matter should be referred to the General Electric Company.

CIRCUIT PROTECTIVE DEVICES DEPARTMENT

**GENERAL ELECTRIC**

PLAINVILLE, CONNECTICUT