



TDM Handle-Operating Mechanism

For TFJ, TFK/THFK, and TFL Circuit Breakers

KIT CONTENTS (TFKOM1 & TFKOM2)

Each kit consists of a handle-operating mechanism, two #6-32 x 1 1/2" mounting screws and lockwashers, two 4mm x 45mm mounting screws (blue) and lockwashers, and a shaft (TFKOM2 only).

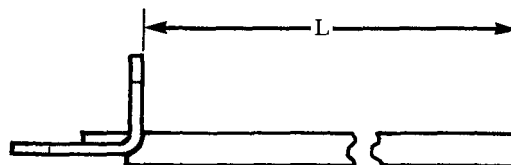
MOUNTING INSTRUCTIONS

1. Mount the circuit breaker.
2. Turn the breaker OFF. Be certain the circuit is de-energized.
3. Remove the two circuit breaker line end cover screws and washers (inboard two on TFL).
4. Secure the operating mechanism to the circuit breaker as shown in figure 1 or 2. For type TFJ or TFK breakers use the uncolored #6-32 mounting screws and the small lockwashers. For type TFL breakers use the blue 4mm mounting screws and the large lockwashers.

5. For TFKOM2, determine required shaft length as follows:
 - a. Measure inside depth, D—see figure 3.
 - b. Required shaft length L, is equal to $D - 6\frac{1}{8} \pm \frac{1}{16}$ in.
6. Insert shaft into mechanism collar and torque 1/4-20 Allen locking set screw to 40-50 lb.-in. using 1/8 in. Allen key wrench.

$$L = D - 6.50 \text{ IN.} \pm \frac{1}{16} \text{ IN.}$$

L = LENGTH OF SHAFT
D = DEPTH OF ENCLOSURE



NOTES:

- A. For 15" long shaft order Cat. No. 788A831G10
- B. For 20" long shaft order Cat. No. 788A831G20
- C. Optional NFPA79 compliant inner handle - Order TH79EF. Requires minimum shaft length (L) of 2.50".

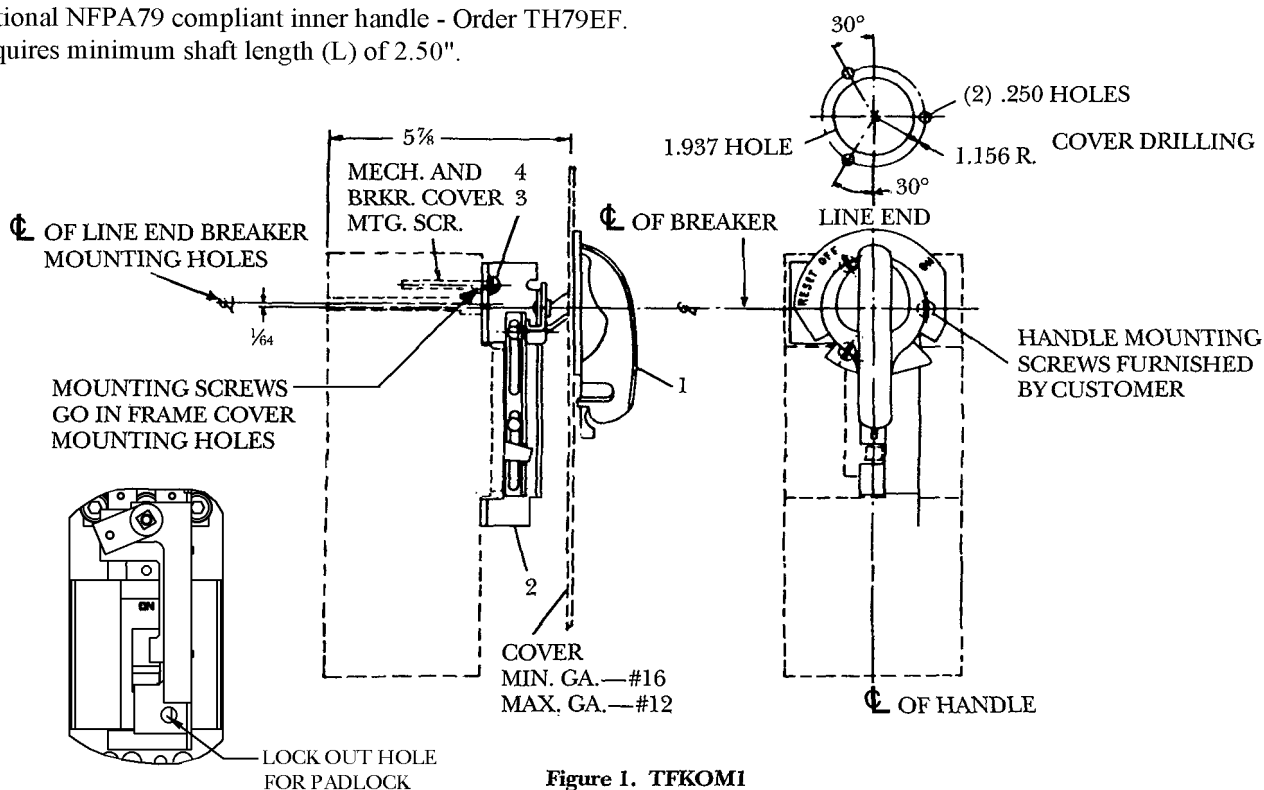


Figure 1. TFKOM1

NOTE: SHAFT IS FURNISHED TO MAX. DEPTH, CUSTOMER TO CUT WHEN DIM. IS LESS (SEE FIG. 3)

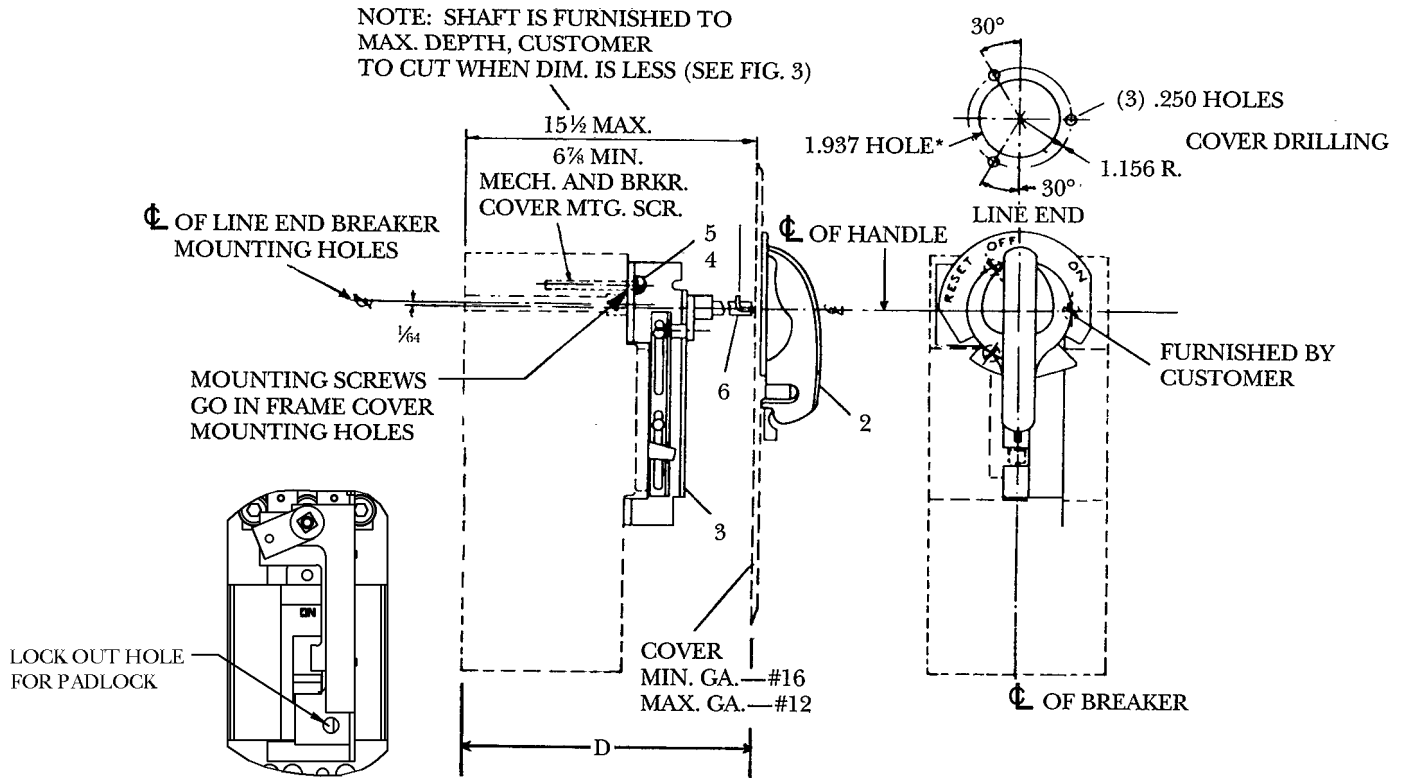


Figure 2. TFKOM2

7. Cover drilling shown is for pendulum motion handle operation. For up-down operation, (handle TH1 only) rotate drilling 90° clockwise. (Up-down operation not applicable to NEMA 3R construction.)
8. Mount operating handle to cover as shown, (with gasket if required) between handle and cover.

* For NEMA 1 application when gasket is not used, hole diameter may be reduced to 1.906.
 ** Requires use of handle. Cat. No. THCH45, Cat. No. TH1 is not suitable for NEMA 4X applications.

REQUIRED SHAFT LENGTH, $L = D - 6\frac{1}{8}$
 (TO INSURE PROPER SHAFT BLADE ENGAGEMENT WITH HANDLE, CUT SHAFT TO WITHIN $\pm \frac{1}{16}$ INCH.)

Length of 10-32 Mtg. Screw Required ①	Thickness of Cover
$\frac{1}{4}$.083-.115
$\frac{3}{16}$.054-.083

① Supplied by customer.

Application	Gasket	Handle Motion
NEMA 1	Not Required	Either
NEMA 3R	Required	Pendulum Only
NEMA 12	Required	Either
NEMA 4X**	Not Required	Pendulum Only

Note: To reorder gasket, use 788A742P3

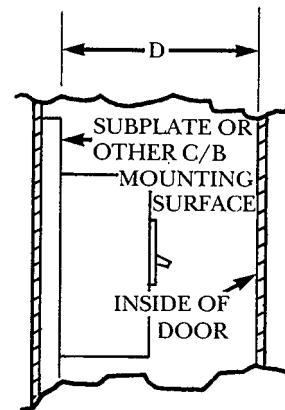


Figure 3.

These instructions do not purport to cover all details or variations in equipment nor to provide for every possible contingency to be met in connection with installation operation or maintenance. Should further information be desired or should particular problems arise which are not covered sufficiently for the purchaser's purposes, the matter should be referred to the GE Company.



GE Consumer & Industrial