



Installation of Walking Beam Interlock

TYPE TJJ, TJK AND THJK

STEP 1 DRILL PLUNGER HOLES IN BREAKERS

- Set breakers in OFF or TRIPPED position. This is absolutely essential to prevent drill from damaging breaker contact arm.
- Drill $\frac{3}{4}$ " diameter hole through rear of breaker cases (See Fig. 1). Note: Location of hole must be accurate to prevent damaging breaker mechanism.
- After drilling holes, turn breakers over, remove front cover and carefully clean out drilling debris inside the cases.
- Replace breaker front covers and tighten screws.

STEP 2 DRILL HOLES IN MOUNTING PANEL

- Drill two $\frac{1}{16}$ " diameter holes $8\frac{1}{2}$ " on center in mounting panel (See Fig. 2). Note: Maximum overall mounting panel thickness is 1-inch.
- Drill two $\frac{1}{16}$ " diameter holes 3" on center in Mounting panel (See Fig. 2).
- Counterbore two $\frac{1}{16}$ " holes drilled in Step 2 (B) to assure a $\frac{3}{8}$ " hex bolt head will fit flush with front of panel (See Fig. 2).

STEP 3 MOUNT WALKING BEAM INTERLOCK

- Mount interlock as shown in Fig. 3 with $\frac{3}{8}$ " hex bolt. Socket wrench may be used to tighten nuts, as shown.
- Make sure plungers can move freely in $\frac{1}{16}$ " holes through mounting panel.

STEP 4 MOUNT BREAKERS

- Before mounting breakers on panel, set both in OFF position.
- Remove breaker end shields and mount on panel, making sure interlock plungers can move freely in holes drilled through rear of breaker cases.

STEP 5 CHECK OPERATION

- Set one breaker in ON position. Interlock should now prevent the second breaker from being turned ON. If both breakers can be set in the ON position at the same time, it will be necessary to adjust the plungers. This operation is described in Step 5.

STEP 6 ADJUST THE PLUNGERS

- Set both breakers in the OFF position.
- Back off nuts "A" and "B" on plunger "A" to last few threads (See Fig. 4).
- Push plunger "A" into breaker "A" as far as it will go. End of plunger should butt against breaker contact arm.
- Fix plunger in this position by tightening up on nut "B" first, then nut "A".
- Set Breaker "A" in ON position.
- With breaker "B" (still in OFF position) repeat steps 5 (B, C, D) to adjust plunger "B".

IMPORTANT

Check operation again. Interlock should prevent both breakers from being in the ON position at the same time.

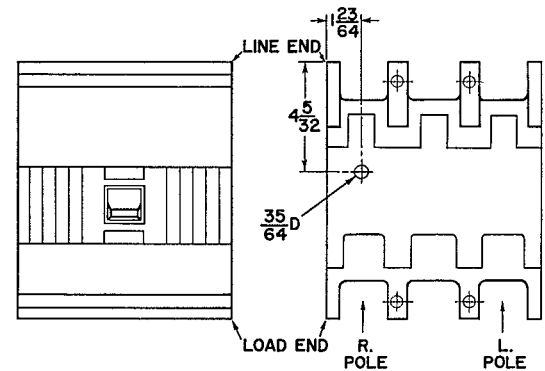


Fig. 1 J 600 circuit breaker

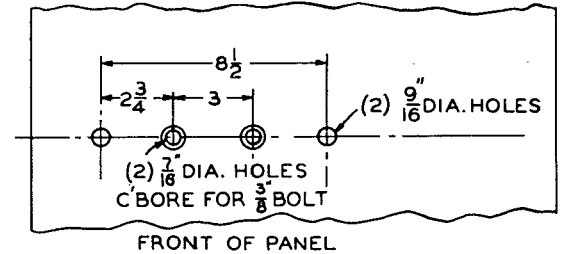


Fig. 2

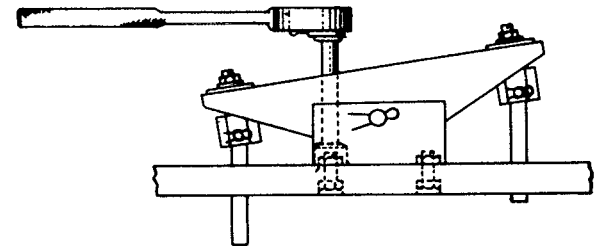


Fig. 3

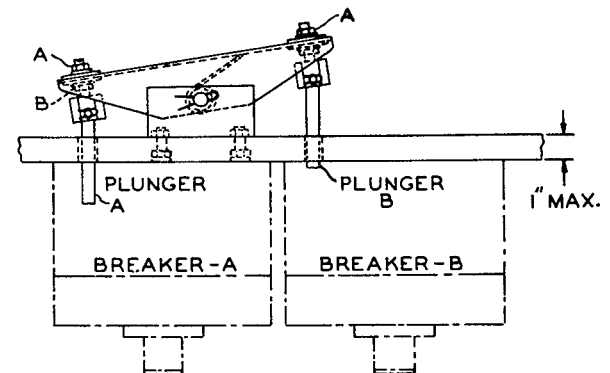


Fig. 4

These instructions do not purport to cover all details or variations in equipment nor to provide for every possible contingency to be met in connection with installation, operation or maintenance. Should further information be desired or should particular problems arise which are not covered sufficiently for the purchaser's purposes, the matter should be referred to the General Electric Company.

GENERAL ELECTRIC

CIRCUIT PROTECTIVE DEVICES DEPT., PLAINVILLE, CONN. 06062