



POWER BREAK[®] Padlocking Accessory

For 2500- 4000A Frames

GENERAL DESCRIPTION

The padlock enables the breaker to be locked in an open position with up to three padlocks. To install the padlock, remove the escutcheon plate and replace it with the padlock device.

PADLOCKING THE BREAKER

Press the OFF button, slide the padlock slide plate (Figure 2) to the left, and lock the breaker as shown in Figure 3.

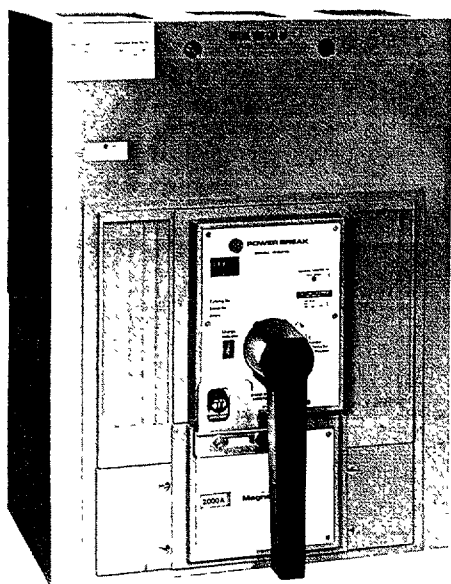


Figure 1. Device shown mounted

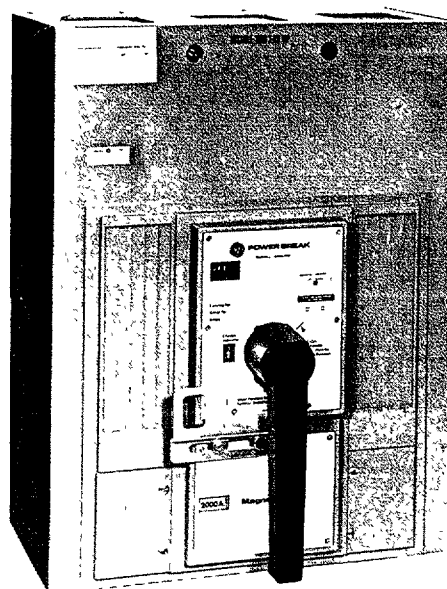


Figure 2. Device shown with breaker open

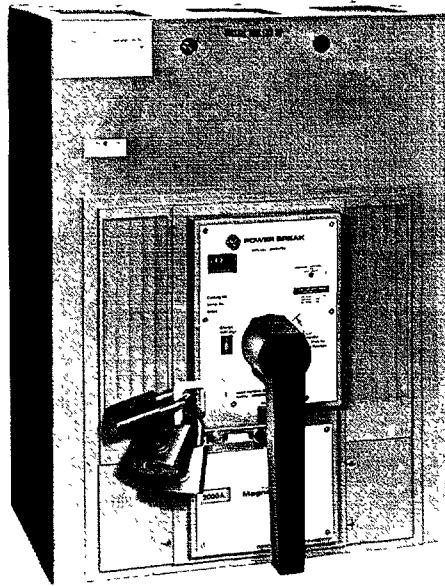


Figure 3. Device shown with breaker locked open

DOOR INTERLOCK AND PADLOCK COMBINATION FOR 2500 – 4000A FRAMES

DESCRIPTION

The combination Door Interlock and Padlocking device enables the breaker to be locked in an open position with up to three (3) padlocks. It can also be used to interlock the panel door while the breaker is closed. A defeating means is provided as part of the door interlock to permit in-service inspection by qualified personnel.

INSTALLATION

The combination Door Interlock and Padlocking mechanism is constructed as part of the breaker escutcheon plate. The plate is assembled to the breaker cover using its four mounting screws.

A separate steel stud is provided for customer mounting. This stud mounts on the enclosure door and is intended to remove any slack between the door panel and the interlock. To mount, drill a 0.187 inch hole in the door panel as shown below. The stud may be riveted to the door if the panel is 0.125 inches max.

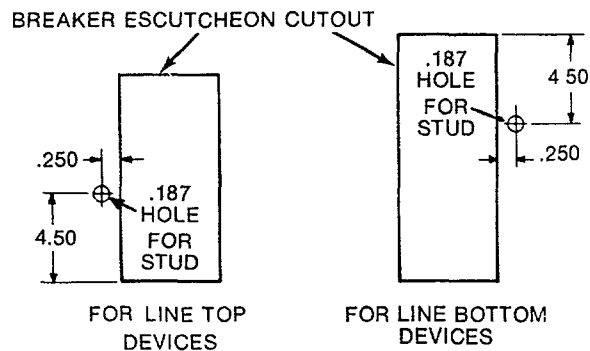


Figure 4. Door drilling for Magnetrip Breakers

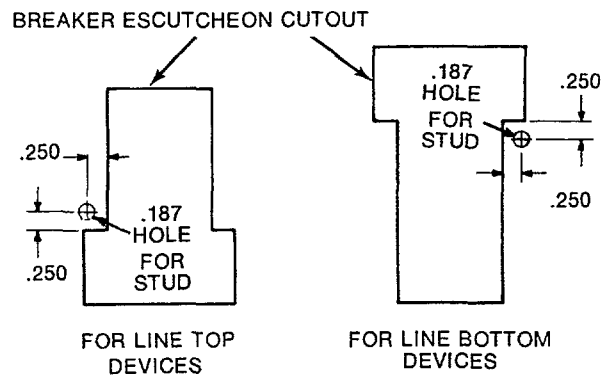


Figure 5. Door drilling for Versatrip and Selectrip Breakers

PADLOCKING THE BREAKER

Press OFF button and slide padlock slide plate to the left. Lock slide plate in place using 3 padlocks if necessary (see Figure 8).

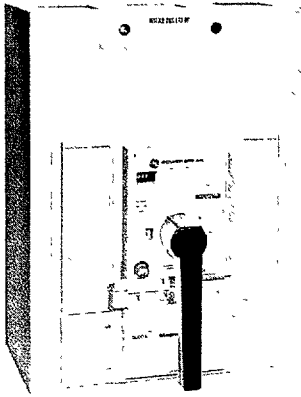


Figure 6. Device shown mounted

TO USE DOOR INTERLOCK

Verify that the mechanism latch fully extends beyond padlock to interlock the panel door. When required, press defeat mechanism, as shown in Figure 9, and slide latch to the right to clear the panel door.

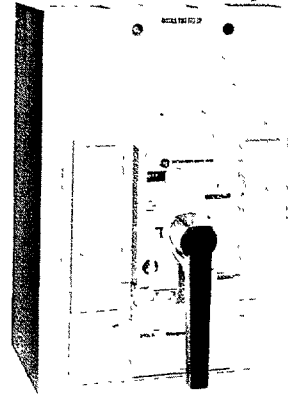


Figure 7. Device shown with breaker open

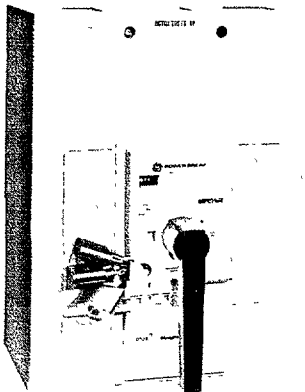


Figure 8. Device shown with breaker locked open

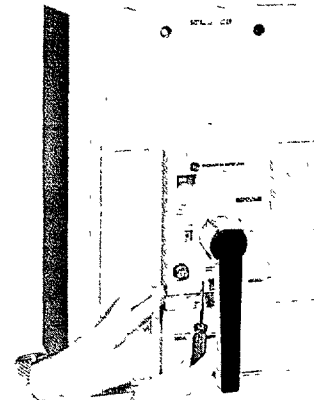


Figure 9. Device shown with interlock being defeated

These instructions do not purport to cover all details or variations in equipment nor to provide for every possible contingency to be met in connection with installation operation or maintenance. Should further information be desired or should particular problems arise which are not covered sufficiently for the purchaser's purposes, the matter should be referred to the General Electric Company.

For further information
call or write your local
General Electric
Sales Office or

General Electric
Company
41 Woodford Avenue
Plainville, CT 06062 U S A.

Outside the U S. and Canada write International Trading Operations
570 Lexington Avenue, New York, NY 10022 U S A
GEH-3394D 0185 PSA

GENERAL  **ELECTRIC**