



INSTRUCTIONS TED CENTER STUDS

GEH-3420

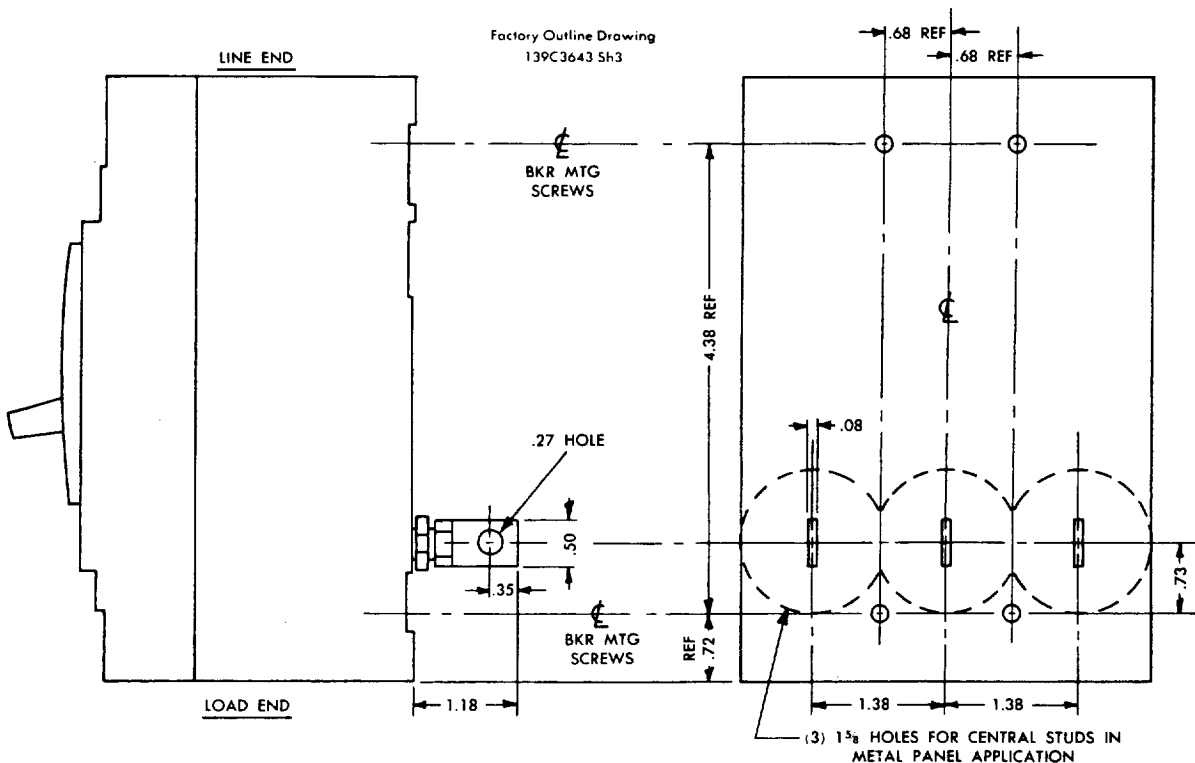
DESCRIPTION

Center Studs are used in dual voltage applications.

CAT. NO. TEDDV — Vertical Studs



FIGURE 1



These instructions do not purport to cover all details or variations in equipment nor to provide for every possible contingency to be met in connection with installation, operation or maintenance. Should further information be desired or should particular problems arise which are not covered sufficiently for the purchaser's purposes, the matter should be referred to the General Electric Company.

GENERAL  ELECTRIC

CIRCUIT PROTECTIVE DEVICES DEPT. • PLAINVILLE, CONN. 06062