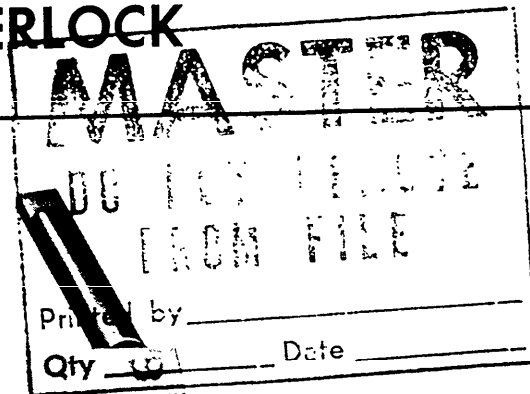
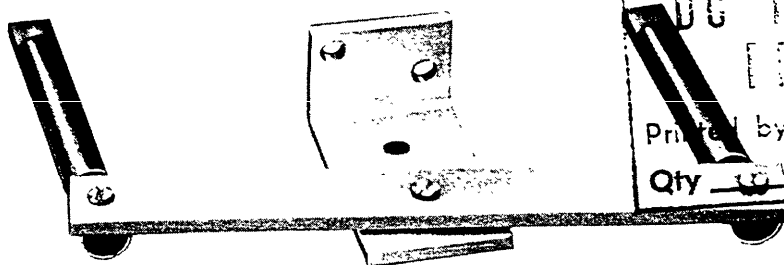




# INSTRUCTIONS - TED CIRCUIT BREAKER WALKING BEAM INTERLOCK



CAT. NO. TEDM1

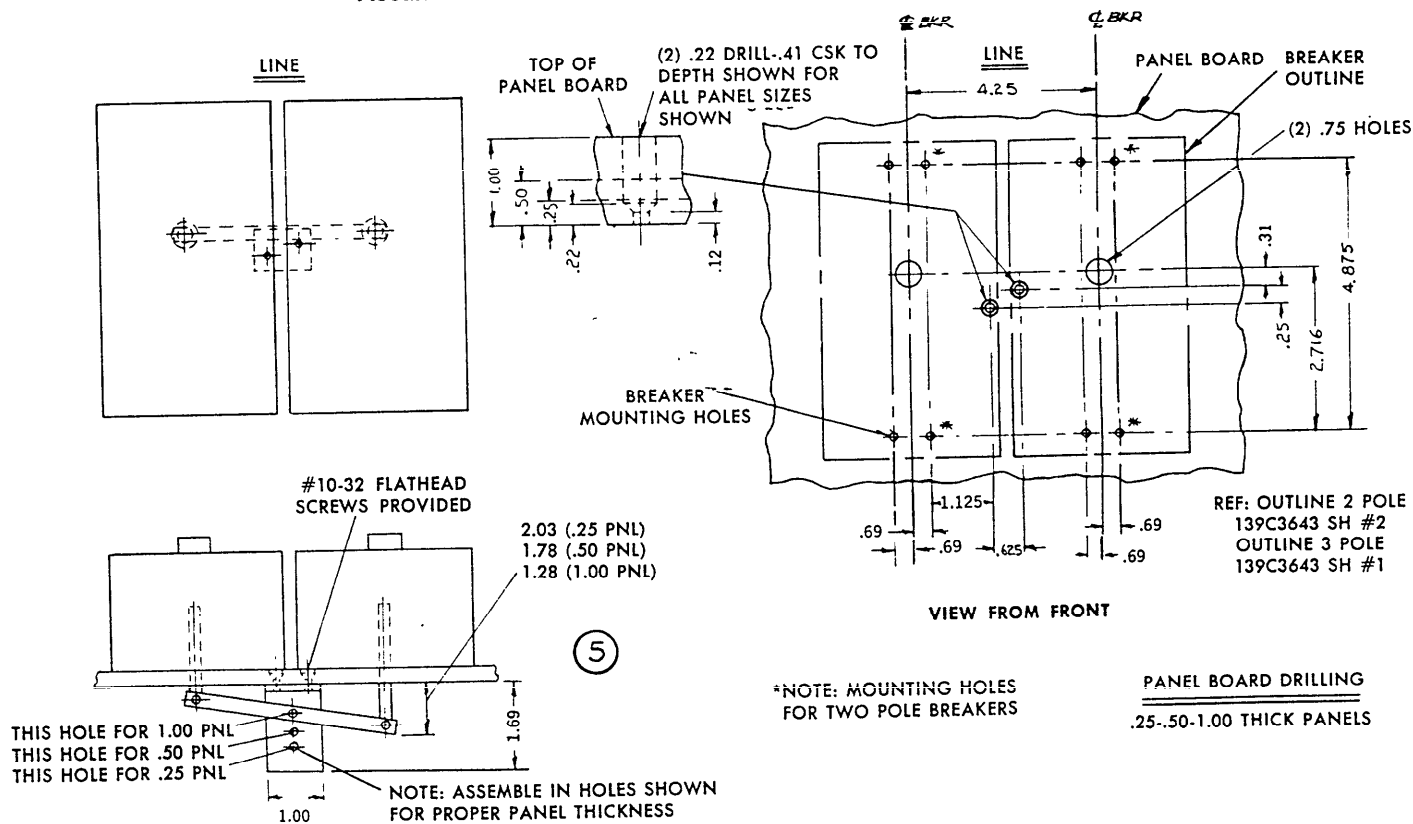
## DESCRIPTION

This accessory provides a mechanical interlock between adjacent breakers, and permits only one breaker at a time to be closed. Both breakers can be open at the same time.

## IMPORTANT NOTE

*U/L listing is voided when the circuit breaker is modified to add an accessory. The U/L label must be destroyed.*

## ASSEMBLING WALKING BEAM INTERLOCK TO BREAKERS



*These instructions do not purport to cover all details or variations in equipment nor to provide for every possible contingency to be met in connection with installation, operation or maintenance. Should further information be desired or should particular problems arise which are not covered sufficiently for the purchaser's purposes, the matter should be referred to the General Electric Company.*



CIRCUIT PROTECTIVE DEVICES DEPT. • PLAINVILLE, CONN. 06062