



TDM Handle Operating Mechanisms

For TKC, TKM, THKM, TB6, TBC6, & TBC8

Cat No.	Type Mechanism
TKMOM1 TKMHM1 (with handle)	Fixed Shaft
TKMOM2 TKMHM2 (with handle)	Adjustable Shaft

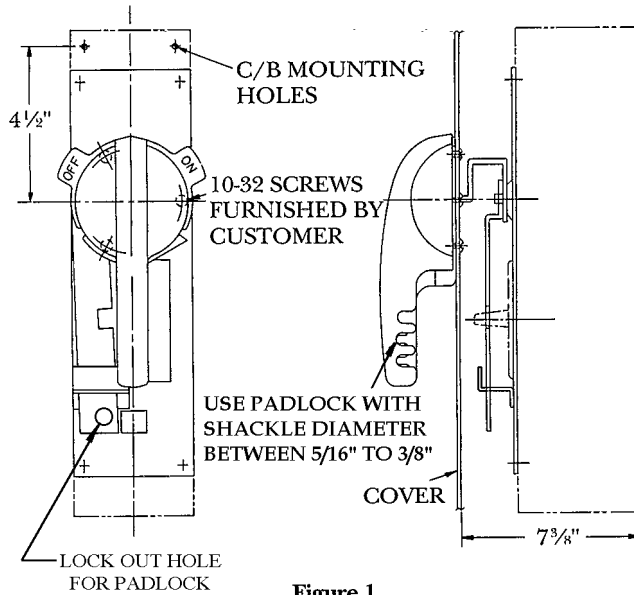


Figure 1.

KIT CONTENTS

- (1) Operating mechanism
- (4) Mounting screws and lockwashers.

MOUNTING INSTRUCTIONS

1. Breaker handle must be in tripped position.
2. Remove the four breaker cover screws and washers.
3. Place operating mechanism on breaker cover and secure with the four screws and lockwashers from the kit.
4. For TKMOM2 with variable length shaft, determine shaft length, L from Fig. 3 and cut to required length.

ENCLOSURE COVER DRILLING (HANDLE - CAT. NO. TH2)

For Pendulum Motion
Drill as shown, figure 2.

For Up-Down Motion
Rotate drilling 90° clockwise. (Up-Down motion not applicable to NEMA 3R construction)

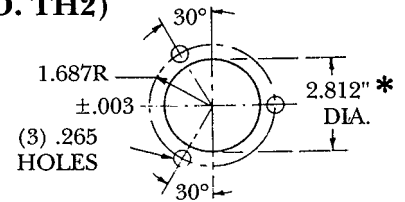


Figure 2.

BOX DEPTH DIMENSIONS

From back of breaker to inside of enclosure cover.

TKMOM1 TKMHM1	7 ³ / ₈	TKMOM2 TKMHM2	See Fig. 3
------------------	-------------------------------	------------------	------------

Application	Gasket	Handle Motion
NEMA 1	Not Required *	Either
NEMA 3R	Required	Pendulum Only
NEMA 12	Required	Either

*For NEMA 1 application when gasket is not used, hole diameter may be reduced to 2.781.

To reorder gasket, use 788A742P4

Length of 10-32 Mtg. Screw Required	Thickness of Cover
1/4	.083 - .115
3/16	.054 - .083

REQUIRED SHAFT LENGTH, $L = D - 6\frac{1}{8}$
 (TO INSURE PROPER SHAFT BLADE ENGAGEMENT WITH
 HANDLE, CUT SHAFT TO WITHIN $\pm \frac{1}{16}$ INCH.

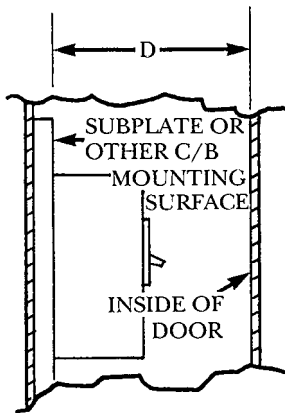
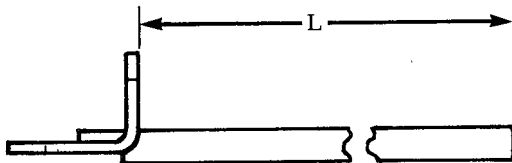


Figure 3.

5. Insert shaft into mechanism collar and torque $\frac{1}{4}$ -20 Allen locking set screw to 40-50 lb.-in. using $\frac{1}{8}$ in. Allen key wrench.
6. For 15" long shaft order Cat. No. 788A832G2
7. For 20" long shaft order Cat. No. 788A832G5
8. Optional NFPA79 compliant inner handle - Order TH79JK. Requires minimum shaft length (L) of 3.50".



$L = D - 6.50 \text{ IN.} \pm \frac{1}{16} \text{ IN.}$
 L = LENGTH OF SHAFT
 D = DEPTH OF ENCLOSURE

These instructions do not purport to cover all details or variations in equipment nor to provide for every possible contingency to be met in connection with installation operation or maintenance. Should further information be desired or should particular problems arise which are not covered sufficiently for the purchaser's purposes, the matter should be referred to the GE Company.



GE Consumer & Industrial

GEH4314
 Rev. 06 0109 PSA

Electrical Distribution & Control
 General Electric Company
 41, Woodford Ave., Plainville, CT 06062
 ©2007 General Electric Company