



# INSTALLATION INSTRUCTIONS

## AUXILIARY SWITCH

### FOR TYPES THJS, THJS, TJR, THJR

**NOTE:** U/L listing is voided when the circuit breaker is modified to add an accessory. The U/L label must be destroyed.

### AUXILIARY SWITCH — GENERAL

Provides remote indication of circuit breaker main contact position - OPEN or CLOSED.

### ELECTRICAL DATA

Switch Contacts	Voltage Rating	No. of Switches	Catalog Number
 Breaker ON	6 Ampere-240Vac	1	TJSASA2AB1L
	½ Ampere-125Vac	2	TJSASA2AB2L
	¼ Ampere-250Vac	3	TJSASA2AB3L
		4	TJSASA2AB4L
 Breaker OFF or TRIPPED	*6 Ampere-600Vac	1	TJSASA6AB1L
	½ Ampere-125Vac	2	TJSASA6AB2L
	¼ Ampere-250Vac	3	TJSASA6AB3L
		4	TJSASA6AB4L

\*Formerly Green

+ Not U/L Listed

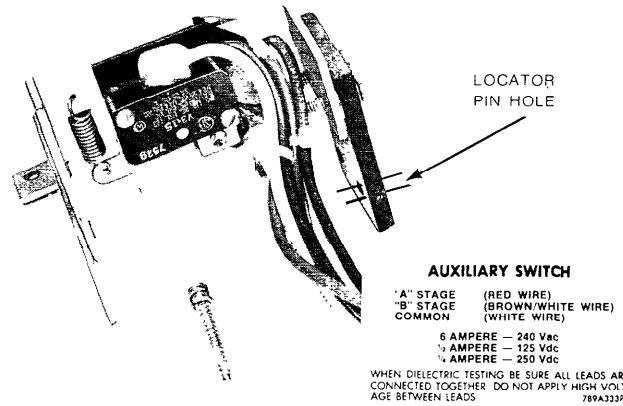


Figure 1

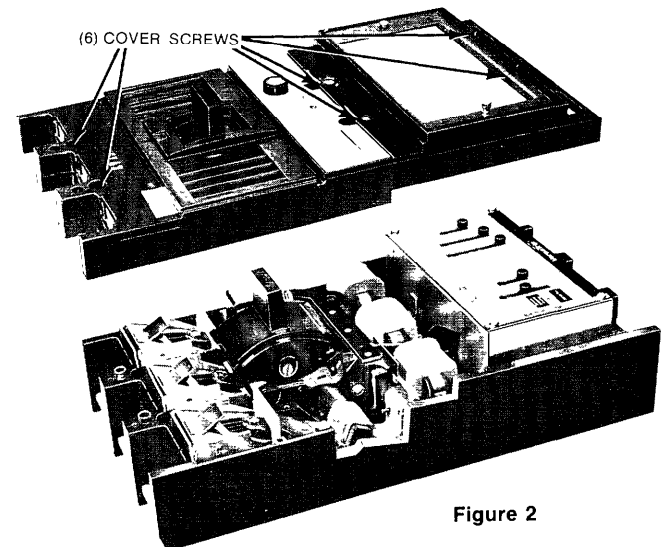


Figure 2

### INSTALLATION

**WARNING:** The Circuit Breaker must be completely de-energized and disconnected from the circuit when accessories are installed.

1. Place the breaker in a TRIPPED position (Handle at midpoint) by depressing trip button.
2. Remove cover from breaker by removing (6) cover screws. (Figure 2)
3. Using a .125 diameter bit drill a thru hole as indicated. (Figure 3) This hole should be drilled from the back of the breaker using the spotting hole closest to the trip unit for locating. Remove all chips and debris from circuit breaker interior.

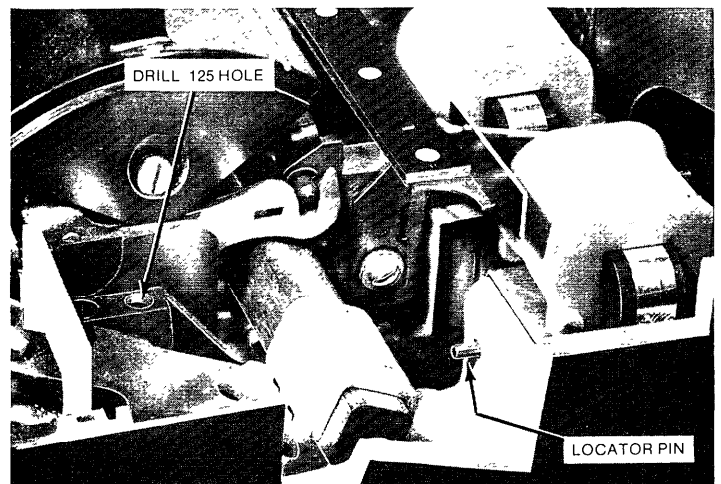


Figure 3

(Continued on Reverse Side)

4. Install accessory as shown with operating levers behind cross bar and locator pin engaged in support. Secure with mounting screw (Figure 4)
5. Slot cover for lead exit as shown and affix label (Figure 5)
6. Replace the breaker cover, taking care that strain relief ties are placed one on each side of cover slot.
7. Circuit Continuity Check

Check continuity of auxiliary switch with breaker in the ON, OFF and TRIPPED positions.

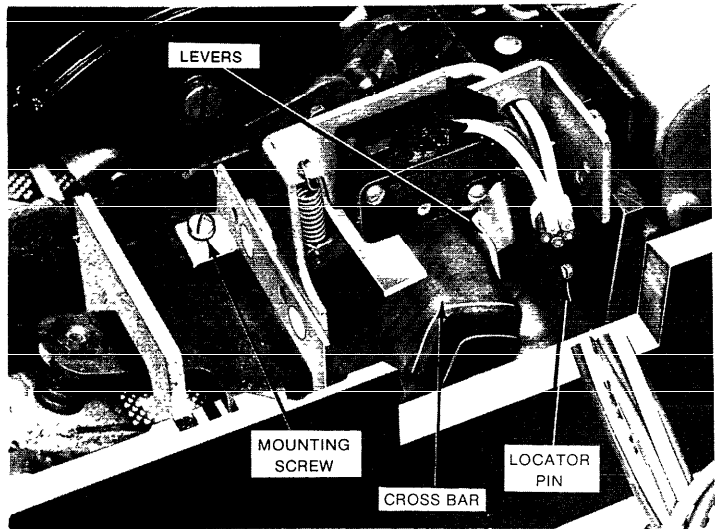
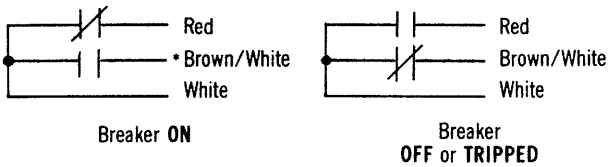


Figure 4



\*Formerly Green

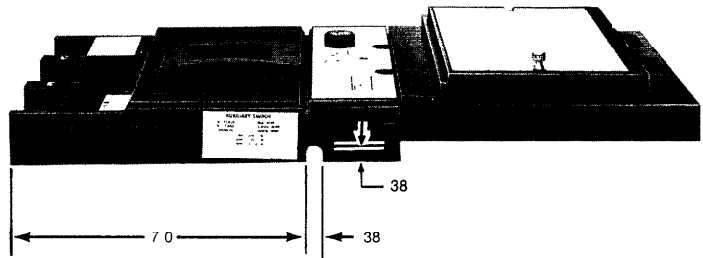


Figure 5

*These instructions do not purport to cover all details or variations in equipment nor to provide for every possible contingency to be met in connection with installation, operation or maintenance. Should further information be desired or should particular problems arise which are not covered sufficiently for the purchaser's purposes, the matter should be referred to the General Electric Company.*