



TDM Handle-Operating Mechanism

For Cat. Nos. TJKOM1, TJKOM2,
TJVOM1 and TJVOM2

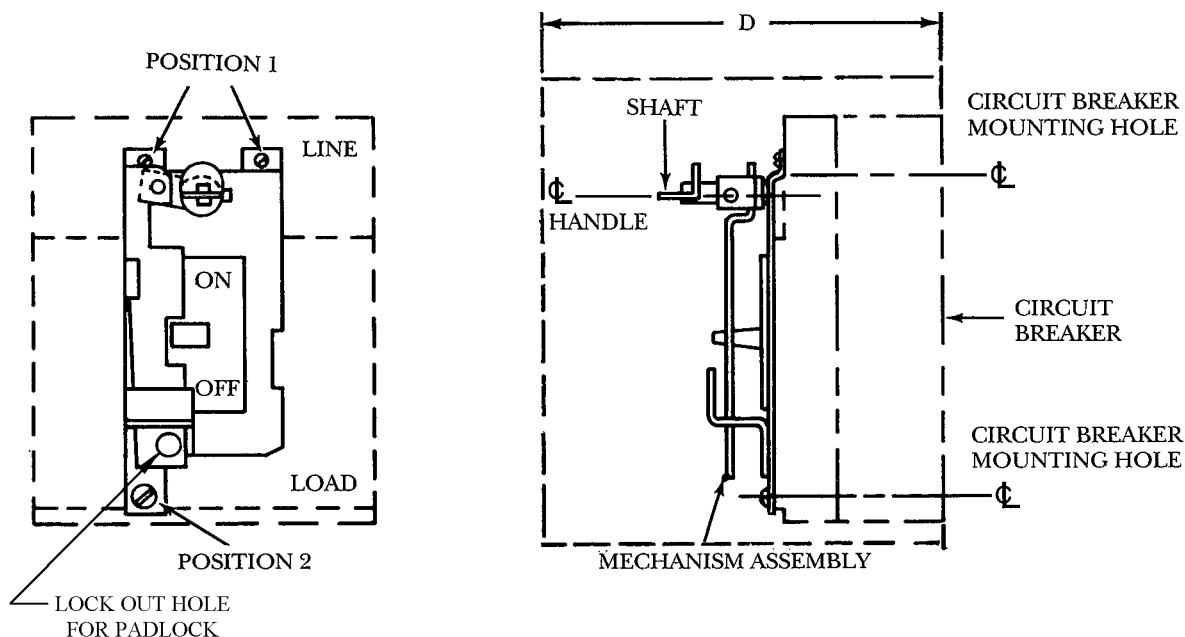


Figure 1. TJ400 and TJ600

GENERAL

This handle-operating mechanism is to be used for TJ600 thermal magnetic and TJ4V, TJL6SS, MicroVersaTrip® circuit breakers.

KIT CONTENTS – TJ400, TJ600

- (1) Operating mechanism.
- (2) Line end mounting screws (#8-32 x 1¼ lg) and lockwashers.
 - (1) ¼-20 x 4½" mounting screw and lockwasher.
 - (1) #8 32 x 3½" mounting screw and lockwasher.
- (1) Shaft.

MOUNTING INSTRUCTIONS

1. Breaker handle must be in tripped position.
2. Remove two line end breaker cover screws and washers (position 1).
3. For the TJ400 and TJ600 – remove left load end breaker mounting screw and washer, if breaker is mounted (position 2).
4. Place operating mechanism on breaker cover.
 5. Secure mechanism to breaker cover at line end with (2) #8-32 x 1¼" screws and lockwashers.
 6. Secure mechanism at load end with (1) ¼-20 x 4½" screw and lockwasher.
 7. Cut shaft, if required (TJKOM2 only) per figure 3. Insert shaft into mechanism collar and torque ¼-20 Allen locking set screw to 40-50 lb.-in. using ⅛" Allen key wrench.
 8. Discard all extra hardware.
 9. For 15" long shaft order Cat. No. 788A832G2
 10. For 20" long shaft order Cat. No. 788A832G5
 11. Optional NFPA79 compliant inner handle - Order TH79JK. Requires minimum shaft length (L) of 3.50".

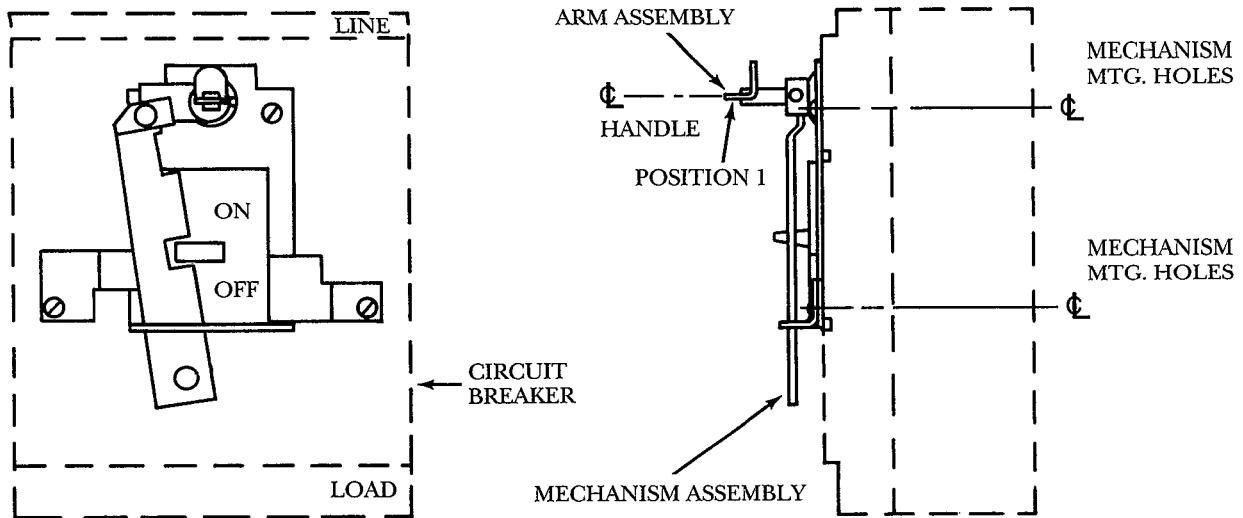


Figure 2. TJ4V600 and TJ9V600

KIT CONTENTS – TJ4V, TJL6S

- (1) Operating mechanism.
- (4) #8-32 x 3/8" pan head screws.
- (1) Shaft.

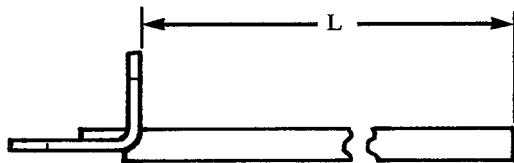


Figure 3.

REQUIRED SHAFT LENGTH
 $L = D - 5.00$
 L = LENGTH OF SHAFT
 D = DEPTH OF ENCLOSURE

MOUNTING INSTRUCTIONS

1. Breaker handle must be in tripped position.
2. Place operating mechanism on breaker cover.
3. Secure mechanism to breaker cover at line and load end with (4) #8-32 x 3/8" screws.
4. Cut shaft, if required (TJVOM2 only) per figure 3. Insert shaft into mechanism collar and torque 1/4-20 Allen locking set screw to 40-50 lb.-in. using 1/8" Allen key wrench.

These instructions do not purport to cover all details or variations in equipment nor to provide for every possible contingency to be met in connection with installation operation or maintenance. Should further information be desired or should particular problems arise which are not covered sufficiently for the purchaser's purposes, the matter should be referred to the GE Company.



GE Consumer & Industrial