



Vault Type Interlocking Door Hardware

For use with Type STDA Flange Handle and TDOM, SDOM Operating Mechanisms, Cat. Nos. TDV1, TDV1L (NEMA 12/13) and TDV1X, TDV1LX and TDV3/3L (NEMA 4/4X)

GENERAL

Type TDV vault type door hardware is for use with flanged enclosures hinged either on the left or right side. It provides two point locking. For three point locking, which is recommended for enclosures from 40 to 60 inches in height, use of Cat. No. TDV1 Series plus Cat. No. TDV3 or TDV3L (3rd point latch kit) is required.

This interlocking vault hardware is intended for use with GE type STDA flange mounted handles and variable depth operating mechanisms. For interlocking version, use interlock hook supplied with this kit. Non-interlocking operation is possible by omission of one part (Item 23, figure 3) and use of hook supplied with STDA handle.

INSTALLATION INSTRUCTIONS FOR TDV1 & TDV3 (FIGURE 3)

Determine desired orientation of upper roller assembly. See figures 1 and 1A.

1. If enclosure door has not been pre-drilled, punch or drill holes shown in figure 2.
2. Place rubber washer (21), between inside of enclosure door and pivot stud (20), and secure them in place with tamperproof screw (22). Keep bearing surface free of paint and lubricate the surface. The two point latching system (Cat. No. TDV1 Series) uses one stud post at top of door and the three point system (Cat. No. TDV1 Series plus Cat. No. TDV3 or TDV3L) uses two (one at top, one at bottom of door).
3. Drill holes in latch bar (provided by customer) per figure 2. Attach roller assemblies (10) & (19) to latch bar through .257 inch diameter holes with a stud and cotter pin (14) and (16). Note roller assembly with .375 inch square hole will be mounted over pivot stud (20). If interlocking is required attach interlock bracket (23) with 10-24 screws (35) and lockwashers (36), on the connecting latch bar as shown in figures 2 and 3.
4. Position handle plate assembly (4), over gasket (5), on door and attach it in place by threading in the two bushings (6).
5. Lubricate shaft and "O" ring assembly (2) and push assembly from the outside of enclosure into lower

bushing. Place assembled latch bar and handle return spring (8), over lower bushing as shown. Engage long leg of spring against post on handle plate (4) and place bent leg into small hole in roller assembly (10). Install washer and 10-32 screw (12) & (13).

6. Place the other roller latch (19) in place on pivot stud (20) and secure with washer and nut (17) & (18). The entire assembly should be able to rotate against the bias of the spring without binding.
7. Lubricate pin (7) and "O" ring (3) and push it into upper bushing from outside of enclosure until it is fully seated. Mate interlock spring (9), with catch (11), and mount them over the upper bushing, capturing spacer washer (26), between them. Install screw and washer (12) & (13).
8. Torque #10-32 screws to 25-30 lb.-in. and ¼-20 locknuts to 20-25 lb.-in.
9. Apply pressure sensitive label, with vault hardware operating instructions to the outside of the enclosure.

ADJUSTMENT PROCEDURE FOR TDV1 & TDV3

1. Place circuit breaker or disconnect switch in "OFF" position and close enclosure door but do not turn handle. The door should latch so that it cannot be opened without the aid of a screwdriver as noted on instruction label. It also should not be possible to turn device to the "ON" position at this time.
2. Turn the handle (2), until interlock catch (11) moves in place. The door should seal tightly. It should now be possible to turn device to "ON" position if interlock bracket (23), is in the correct position. If necessary, adjust bracket down on bar to contact the STDA handle interlock blade sooner. See GEH-5314.
3. It should not be possible to open enclosure door with device in "ON" position without defeating screw on the vault hardware. If necessary move interlock hook (provided with flange handle Cat. No. STDA1 or STDA2) downward. While maintaining the opening pressure on the door, defeat the interlock on the handle. The door should open.

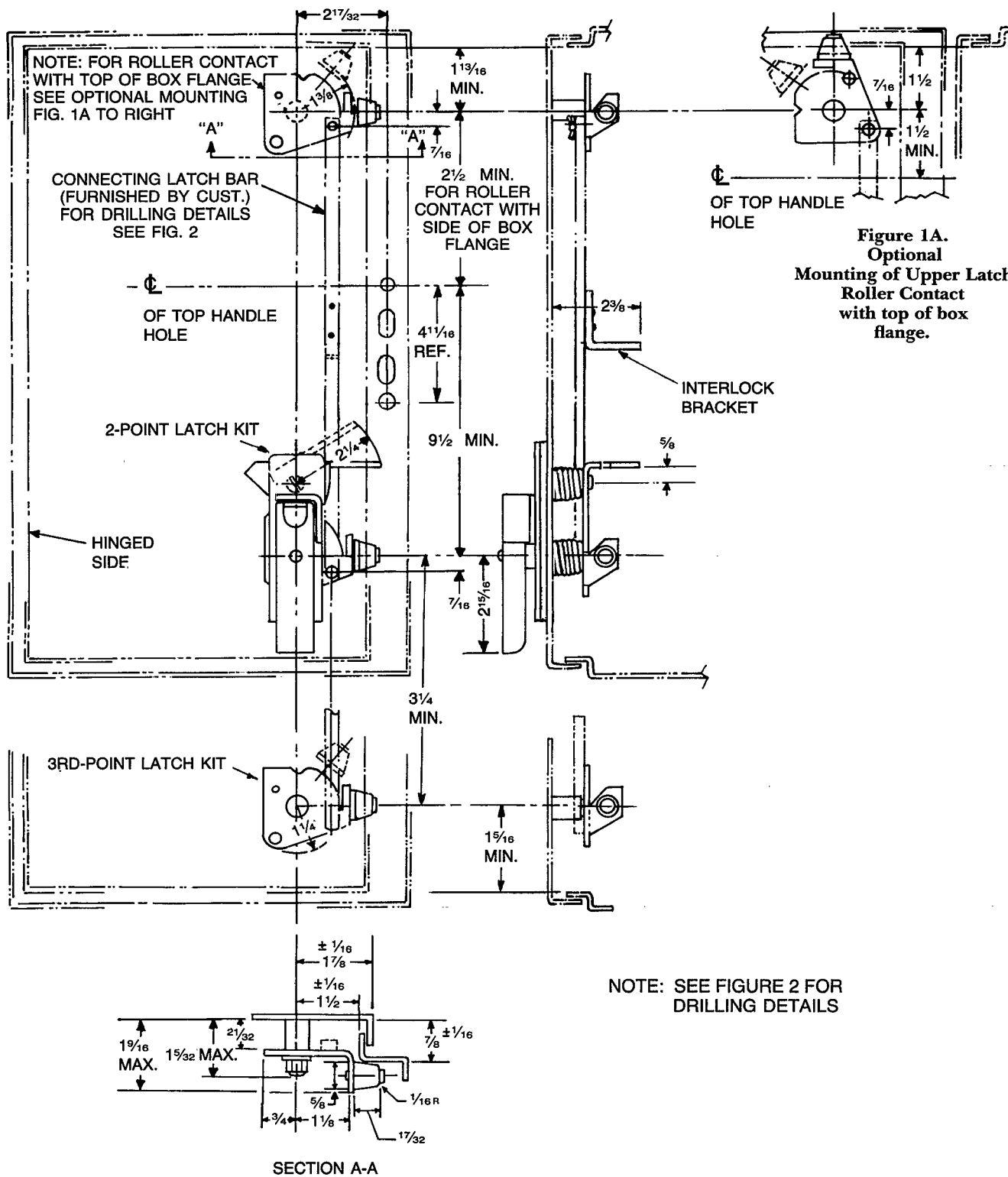


Figure 1. Overview assembly of TDV1, TDV1X, TDV3 (for door hinged on left).

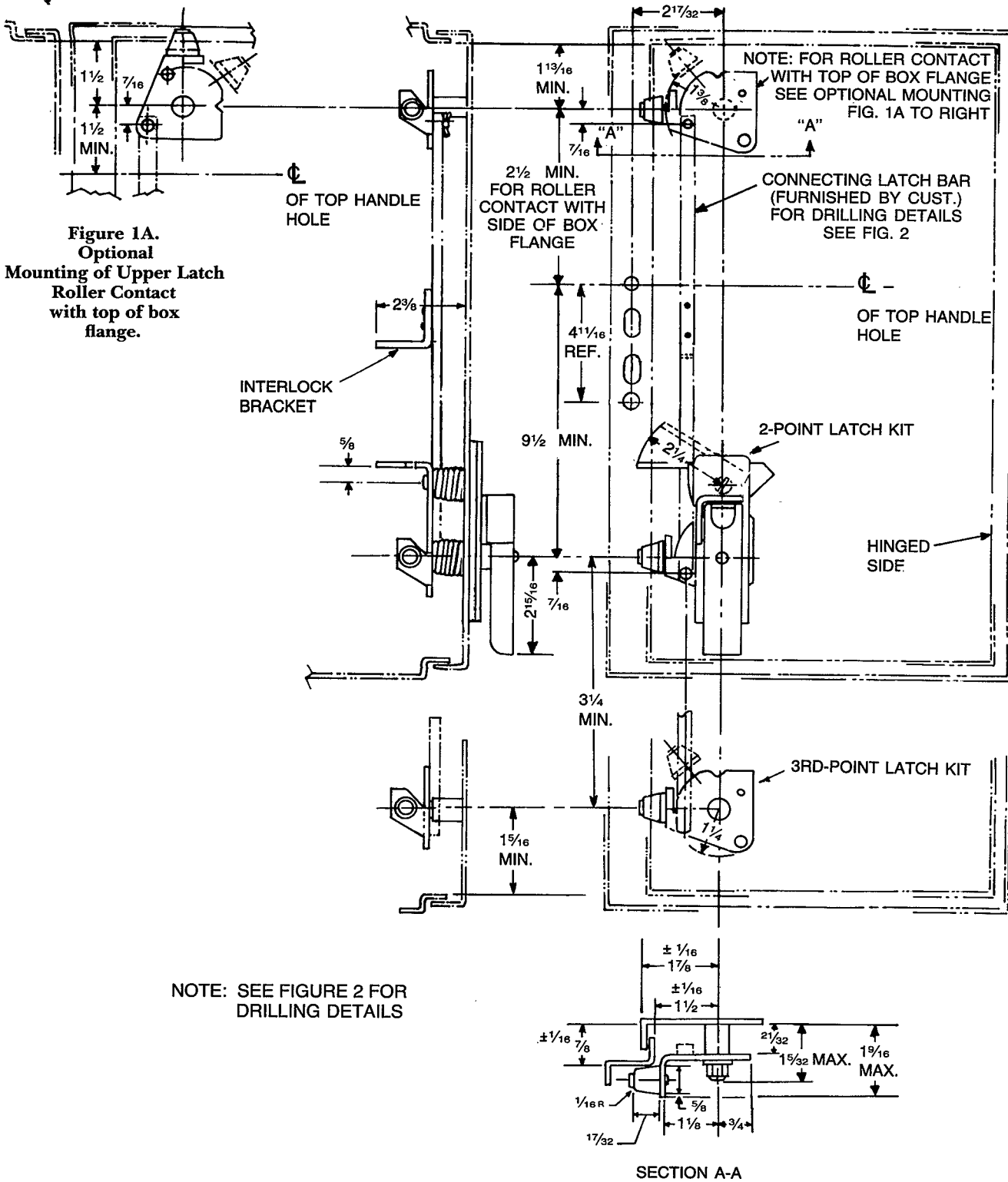


Figure 4. Overview assembly of TDV1L, TDV1LX, TDV3L (for door hinged on right).

Parts Identification List

Item No.	Description
2	Handle Assembly
3	O-Ring
4	Lock Plate Assembly
5	Gasket
6	Bushing
7	Interlock Pin
8	Spring
9	Spring
10	Roller Bracket Assembly
11	Door Catch
12	#10 Washer
13	Hex Head Screw, 10-32 x $\frac{3}{8}$
14	Stud
16	Cotter Pin $\frac{1}{16}$ x $\frac{3}{8}$
17	$\frac{1}{4}$ Flat Washer
18	Locknut
19	Roller Bracket Assembly
20	Pivot Stud
21	Rubber Washer
22	One-Way Sems Screw, 10-32
23	Bracket
26	$\frac{5}{16}$ Washer
35	Slotted RH Screw, 10-24 x $\frac{5}{8}$
36	Split Lockwasher, #10

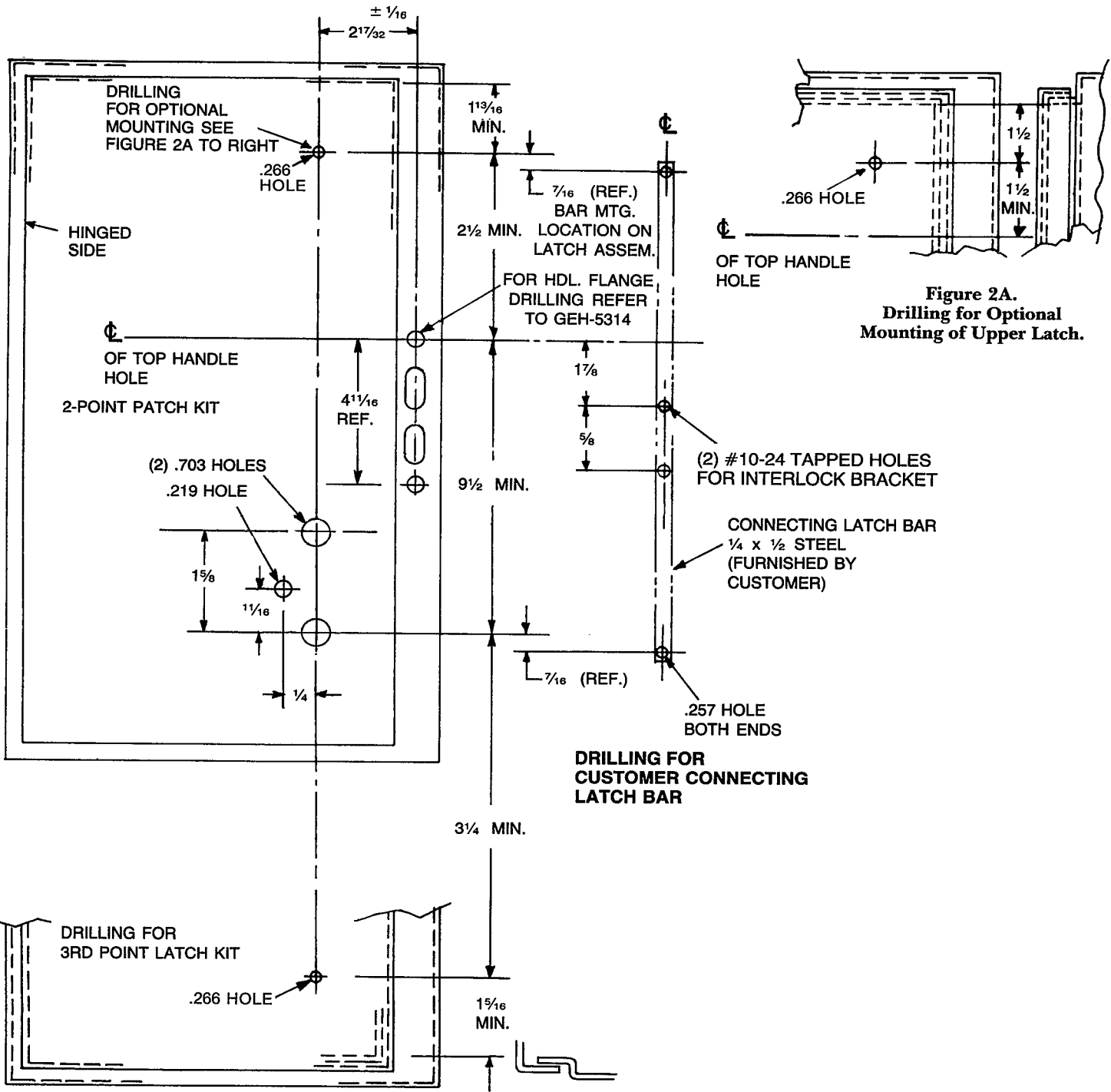


Figure 2. Right hand door drilling – door hinged on left (reverse for left hand door).

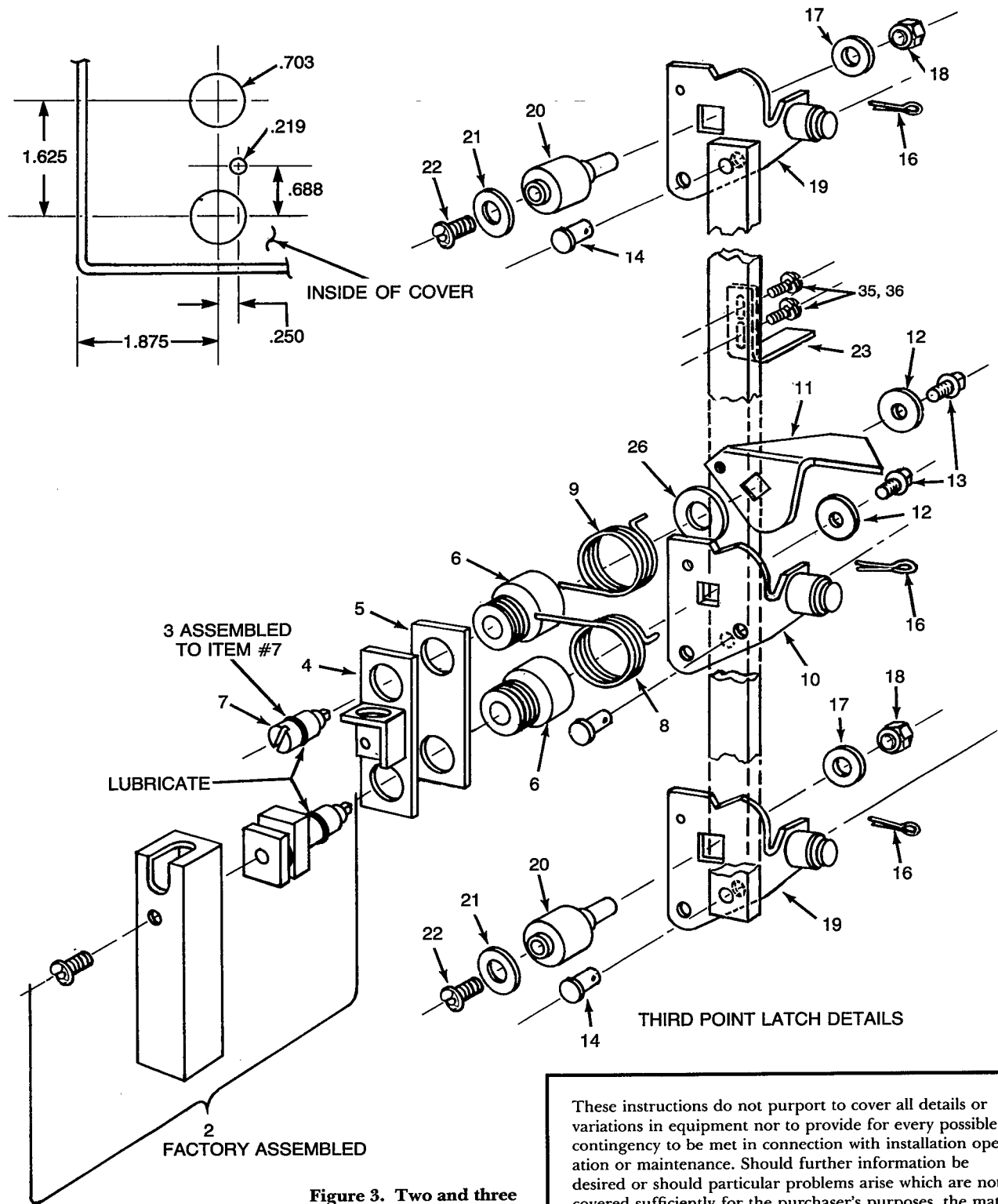


Figure 3. Two and three point latch assembly (right hand shown).

These instructions do not purport to cover all details or variations in equipment nor to provide for every possible contingency to be met in connection with installation operation or maintenance. Should further information be desired or should particular problems arise which are not covered sufficiently for the purchaser's purposes, the matter should be referred to the GE Company.



GE Electrical Distribution & Control