



C-2000™ Control

NEMA Type 1 Enclosures CLXE1G through CLXE1L for CL Contactors

Warning: Disconnect all power before installing or servicing this device, death or serious injury may result.

Caution: Before installing in a nuclear application, determine that the product is intended for such use.

Description

The enclosures CLXE1G through CLXE1L are intended for use with CL type Reversing Contactors, Reversing Starters (Type LAR) and Wye-Delta Starters (Type LAD) as indicated in table 1 below. These NEMA Type 1 enclosures are rated for indoor use only. Pilot devices and Overload Relay Kits may be added to this enclosure as indicated below. Enclosures may be used with a Control Power Transformer.

Table 1. Enclosures for use with CL Reversers and Wye-Delta Starters

Use With Contactor/Starter	Reversing Contactor/Starter	Wye-Delta Starter	2S/2W Starter
CL00A, CL01A, CL02A CL25A, CL04A, CL45A	CLXE1G	CLXE1G	CLXE1G
CL06A, CL07A, CL08A CL09A, CL10A	CLXE1H	CLXE1L	CLXE1H

Control Power Transformers

With enclosures CLXE1G through CLXE1L use Control Power Transformers CR308XT1**A for 50VA and CR308XT1**B for 150VA. See GEP-1260 for details on selecting these units.

Pilot Devices

Any P9 type Push Buttons, Selector Switches, and Pilot Lights may be used with these enclosures. Table 2 shows some recommended selections. See GEP-1260 for more information.

Overload Relay Reset

Use kit number CLXR12 for installing an Overload Reset Button. Two kits are required for two-speed controllers

Use only 75°C copper wire with these enclosures.

Table 2. Pilot Devices for CLXE1G through CLXE1L Enclosures.

Function	Operator	Contact Block	Power Supply	Nameplate	Nameplate Adapter
Start Button	P9SPNVG	P9B10VN	N/A	P9ACPBS202	P9ASTBS
Stop Button	P9SPNRG	P9B01VN	N/A	P9ACPBS201	P9ASTBS
Forward Button	P9SPNVG	P9B11VN	N/A	P9ACPBS214	P9ASTBS
Reverse Button	P9SPNVG	P9B11VN	N/A	P9ACPBS215	P9ASTBS
HOA Selector	P9SSMZON	(2) P9B10VN	N/A	P9ACPBS261	P9ASTBS
ON/Off Selector	P9SSMDON	P9B10VN	N/A	P9ACPBS233	P9ASTBS
Fwd/Rev Selector	P9SSMDON	P9B11VN	N/A	P9ACPBS231	P9ASTBS
Fwd/Off/Rev Selector	P9SSMZON	(2) P9B10VN	N/A	P9ACPBS239	P9ASTBS
Red "On" Light	P9SLRD	N/A	P9PDNVL	P9ACPBS212	P9ASTBS
Red "Fwd" Light	P9SLRD	N/A	P0PDNVL	P9ACPBS214	P9ASTBS
White "Rev" Light	P9SLBD	N/A	P9PDNVL	P9ACPBS215	P9ASTBS
Green "Off" Light	P9SLVD	N/A	P9PDNVL	P9ACPBS213	P9ASTBS
Yellow "Start" Light	P9SLGD	N/A	P9PDNVL	P9ACPBS202	P9ASTBS

* 120V Full Voltage Power Supply, for other voltages see GEP-1260.

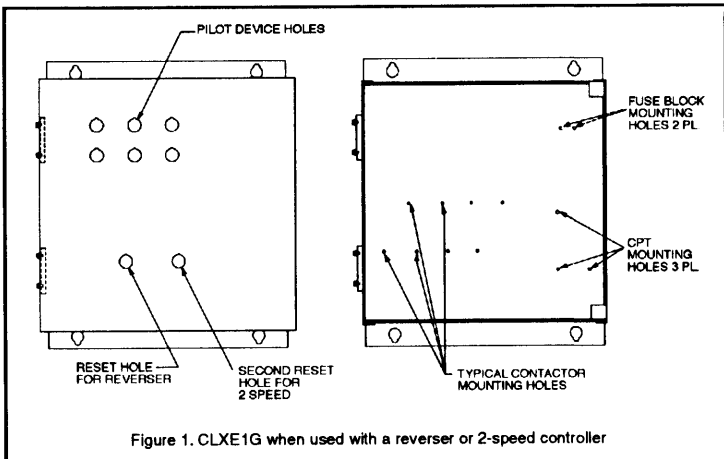


Figure 1. CLXE1G when used with a reverser or 2-speed controller

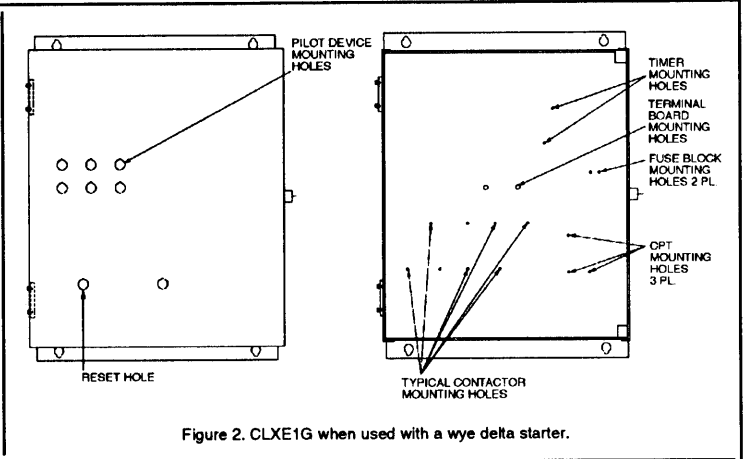


Figure 2. CLXE1G when used with a wye delta starter.

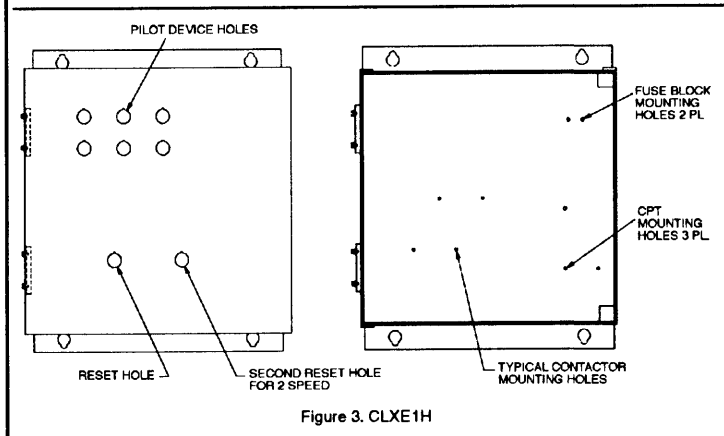


Figure 3. CLXE1H

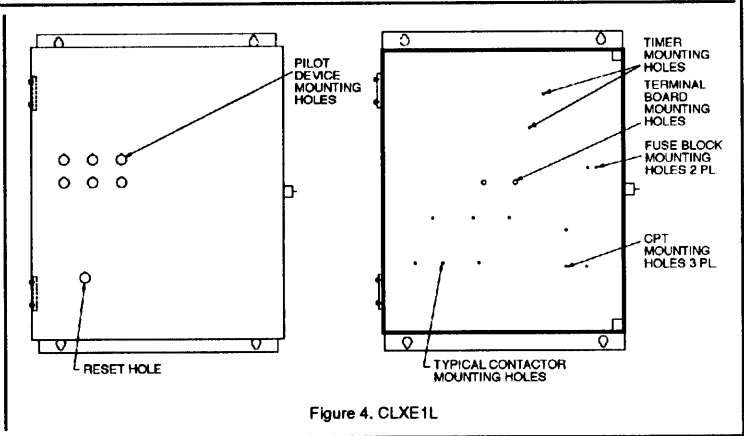


Figure 4. CLXE1L

These instructions do not purport to cover all details or variations in equipment nor to provide for every possible contingency to be met in connection with installation, operation, or maintenance. Should particular problems arise which are not covered sufficiently for the Purchaser's purposes, the matter should be referred to the nearest GE ED&C sales office.



GE Electrical Distribution & Control

General Electric Company
41 Woodford Avenue,
Plainville, CT 06062