



Spectra Series™ Power Panelboards

30–200 Ampere Fusible Switch



WARNING: Danger of electrical shock or injury. Turn OFF power ahead of the panelboard or switchboard before working inside the equipment or removing any component. Do not remove circuit protective devices or any other component until the power is turned OFF.

General

To comply with the National Electrical Code and Underwriters Laboratories, the Canadian Electrical Code and the Canadian Standards Association, the load center must be installed in accordance with the information included on the label on the inside of the equipment. This must also be done in accordance with the applicable local electrical codes and by a qualified electrical contractor or licensed electrician.



WARNING: Hazard of electrical shock or burn. Turn off power supplying this equipment before working inside.

Installation

Use the following instructions to install a 30–200 ampere fusible switch.

- 1. Remove the mounting bracket.** Remove the two screws shown in Figure 1 and remove the mounting bracket from the switch.

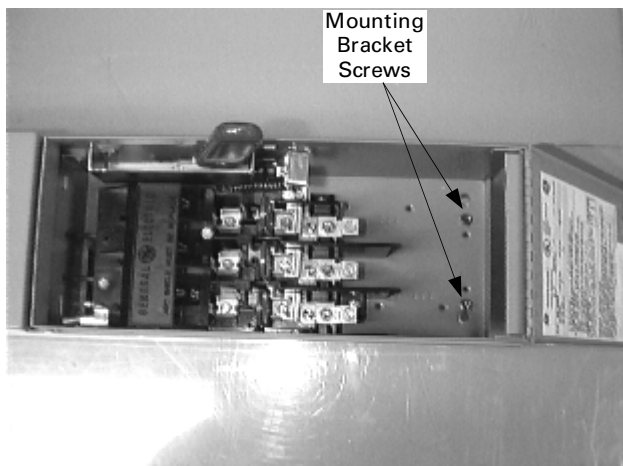


Figure 1. Removing the mounting bracket from the switch.

- 2. Mount the removable mounting bracket.** Install the mounting bracket (removed from the switch in step 1) on the power panelboard with the two self-tapping screws provided, as shown in Figure 2. Tighten the screws to 27–32 in-lb.

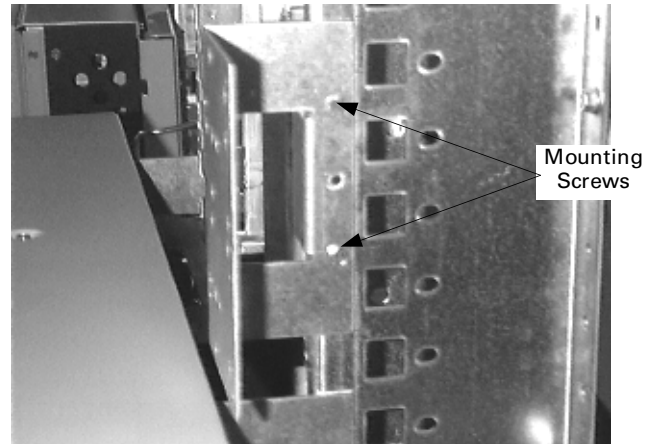


Figure 2. Installing the mounting bracket in the panelboard.

- 3. Install the switch.** Align the locating hook tabs on the bottom of the switch into the square holes in the support rails on the panelboard interior, as shown in Figure 3. Open the switch door and reattach the screws removed in step 1 to the mounting bracket installed on the panel in step 2. Tighten the screws to 27–32 in-lb.

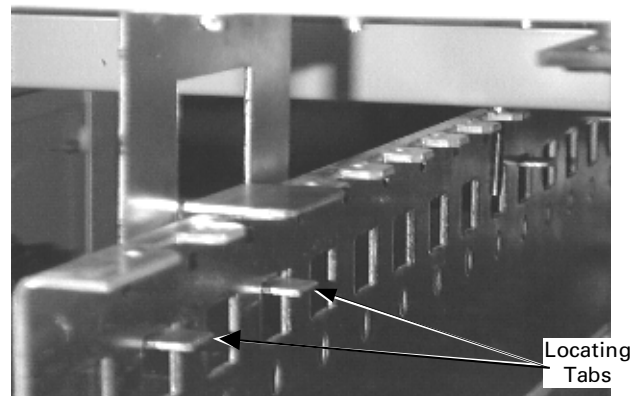


Figure 3. Switch locating tabs aligned in the panelboard interior.

4. **Wire the circuits.** Refer to the label inside for the switch cover for the proper tightening torques.
5. **Filler plates.** Install filler plates in all unused spaces from the filler kits included with the switch. Order replacement filler plates from the list in Table 1.

Current, A	Voltage	Fuse Type	Switch Encl. Width, in.	Filler Kit Cat. No.
30	240/600	H, J, K, R	26	AFP4X
60	240	H, K, R	26	AFP4X
	600	H, J, K, R		AFP5X
100	240/600	H, J, K, R	26	AFP5X
		T		AFP7T
200	240/600	T, J	26	AFP7T
		H, J, K, R	26	AFP7X
		H, K, R	32	AFP7X2

Table 1. Replacement filler plate kits.

Procedure for Aluminum Terminations

1. Strip the insulation, being careful to not nick the wire.
2. Clean the wire strands with a wire brush.
3. Thoroughly coat the stripped conductor with a suitable antioxidant compound, such as ALNOX or PENETROX A13.
4. Insert the conductor and tighten the connector screw to the torque indicated on the rating label.

For Two-Pole Devices on Three-Phase Systems Only

To balance the panelboard load, remove the screws on the appropriate bus clip, reposition the bus clip as shown in Figure 8, then reinstall and tighten the screws to 27–32 in.-lb.

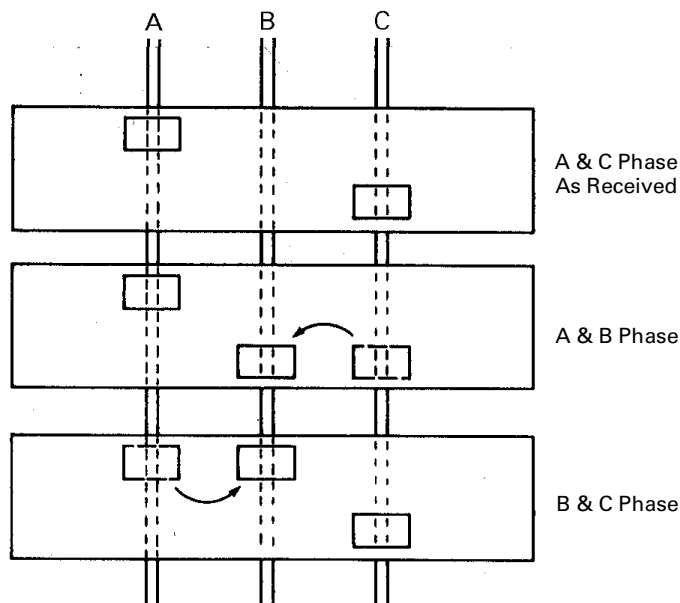


Figure 4. Repositioning the bus clip to balance the load.

These instructions do not cover all details or variations in equipment nor do they provide for every possible contingency that may be met in connection with installation, operation, or maintenance. Should further information be desired or should particular problems arise that are not covered sufficiently for the purchaser's purposes, the matter should be referred to the GE Company.



GE Industrial Systems

General Electric Company
41 Woodford Ave., Plainville, CT 06062