

g

Spectra Series™ Fusible Switch Units

200 Ampere Expansion Kit (J and T Fuses)



WARNING: Danger of electrical shock or injury. Turn OFF power ahead of the panelboard or switchboard before working inside the equipment or removing any component. Do not remove circuit protective devices or any other component until the power is turned OFF.

Installing the Expansion Kit

1. **Remove the switch.** Loosen the rail latch screws and remove the switch by pulling up on the latch handles while pulling the device from the equipment, as shown in Figure 1.
2. **Prepare the enclosure.** Remove and discard the blank cover and the bottom insulator from the bottom of the device, as shown in Figure 2.
3. **Install the straps.** Install the connecting straps with the #10-32 x 1/2" screws provided, as shown in Figure 3. Tighten the screws to 27–32 in-lb.

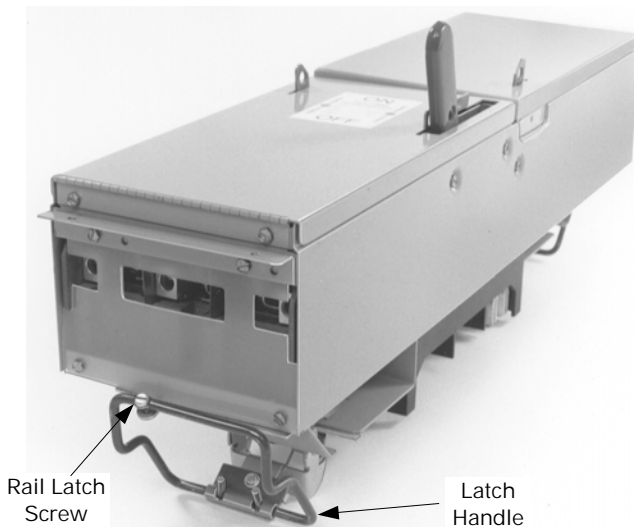


Figure 1. Removing the switch from the equipment.

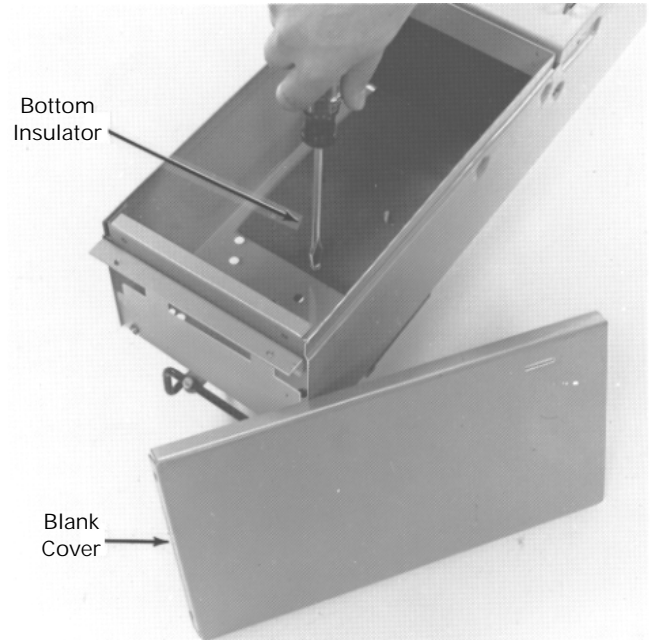


Figure 2. Removing the blank cover and bottom insulator.

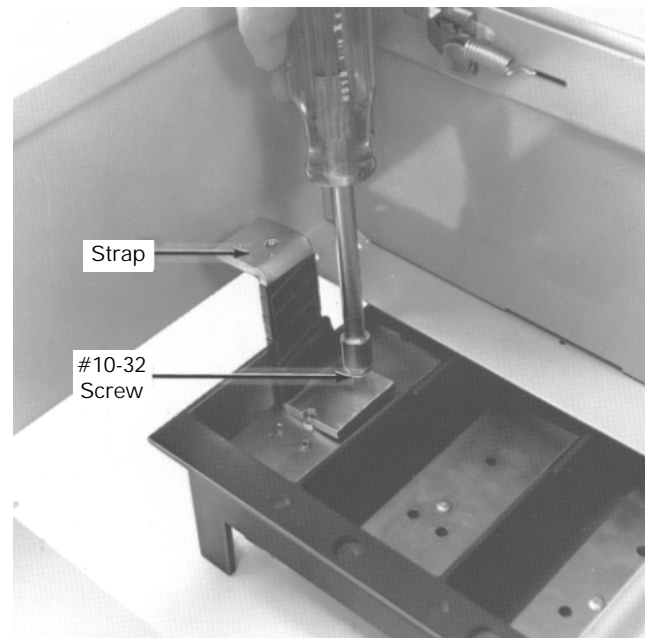


Figure 3. Installing the connecting straps.

4. **Install the kit.** Remove and save the hex nuts from the studs and the red arc cover on the expansion switch, as shown in Figure 4. Install the expansion plate into the enclosure, positioning the switch base over the connecting straps. Install #10-32 screws with washers into the connecting straps inside the switch base. Tighten the screws to 27–32 in-lb.

Replace the hex nuts back onto the plate studs and tighten to 27–32 in-lb. Replace the red arc cover, as shown in Figure 5, and tighten the screws to 12–15 in-lb.

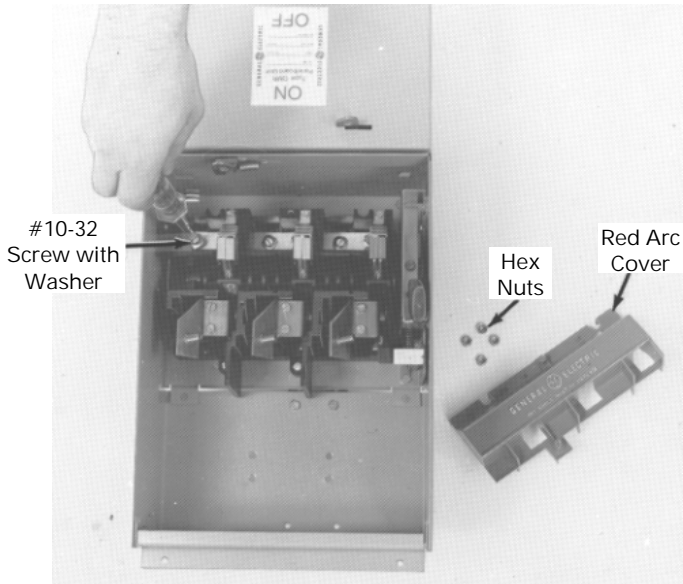


Figure 4. Installing the expansion plate into the enclosure.

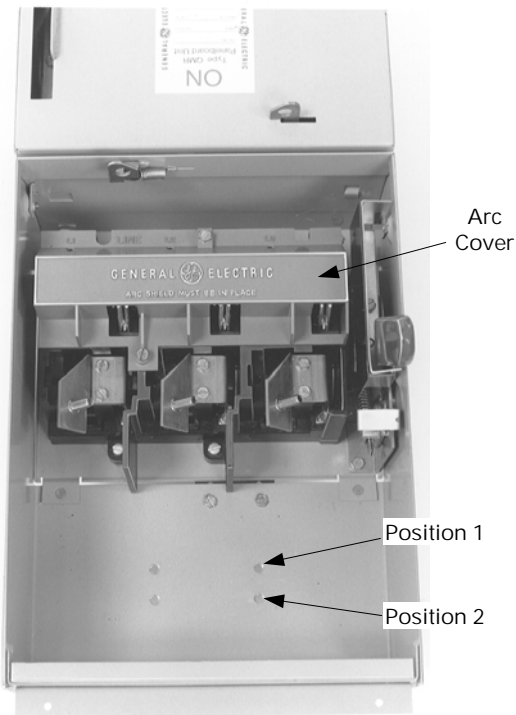


Figure 5. Replacing the arc cover.

5. **Install the load base.** Install the load base into the enclosure, as shown in Figure 6. The position depends on the fuse type, as illustrated in Figure 5 and listed in Table 1. Tighten the mounting screws to 40–50 in-lb. For a type J fuse, install a fuse barrier, as shown in Figure 7, and tighten the mounting screws to 27–32 in-lb.

Position	Fuse Type
1	T Fuse 240 V
2	J Fuse 600 V T Fuse 600 V

Table 1. Position for the load base in the enclosure.

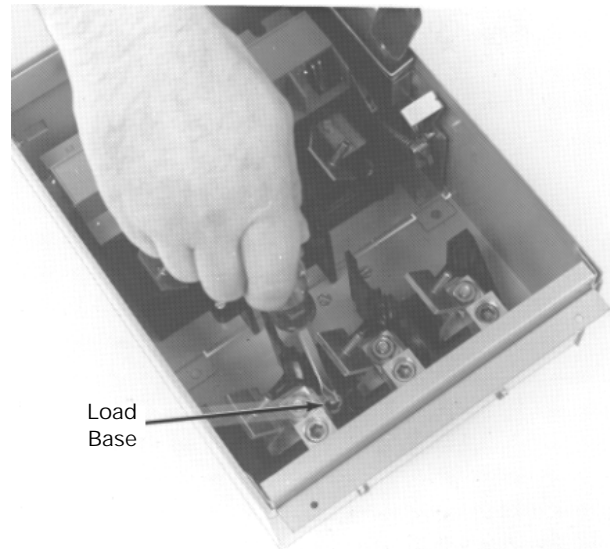


Figure 6. Installing the load base.

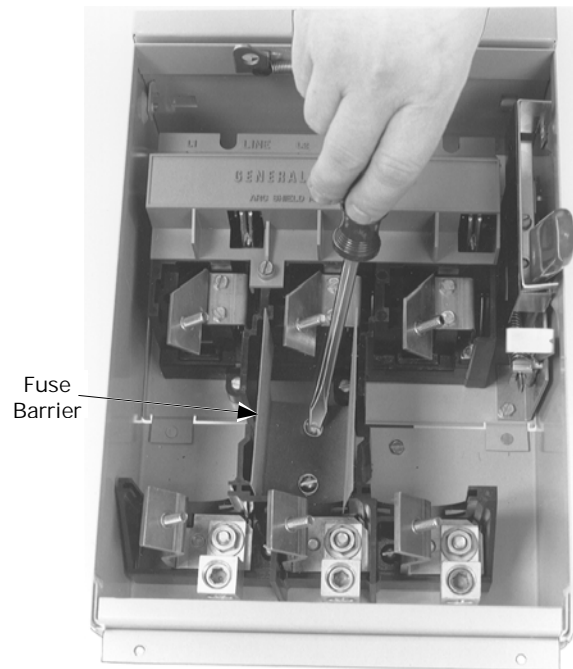


Figure 7. Installing the fuse barrier for type J fuses.

6. **Install the cover.** Install #10-32 x 1/4" screws into the mechanism shroud mounting holes, as shown in Figure 8. Position the new enclosure cover in place on the enclosure and secure with #10-32 x 1/4" screws. Tighten all screws to 27–32 in-lb. Reinstall the switch into the panelboard and secure the rail latch locking screws.

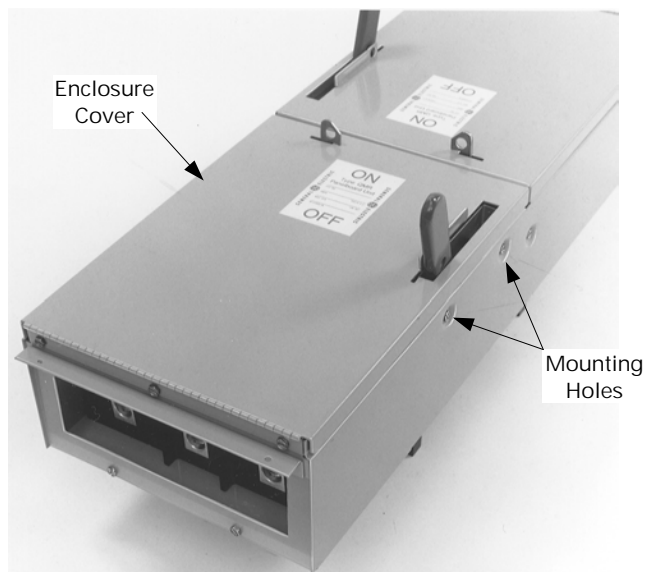


Figure 8. Installing the cover on the enclosure.

For Two-Pole Devices on Three-Phase Systems

To balance the panelboard load, remove the screws on the appropriate bus clip, reposition the bus clip as shown in Figure 9, then install and tighten the screws to 27–32 in-lb.

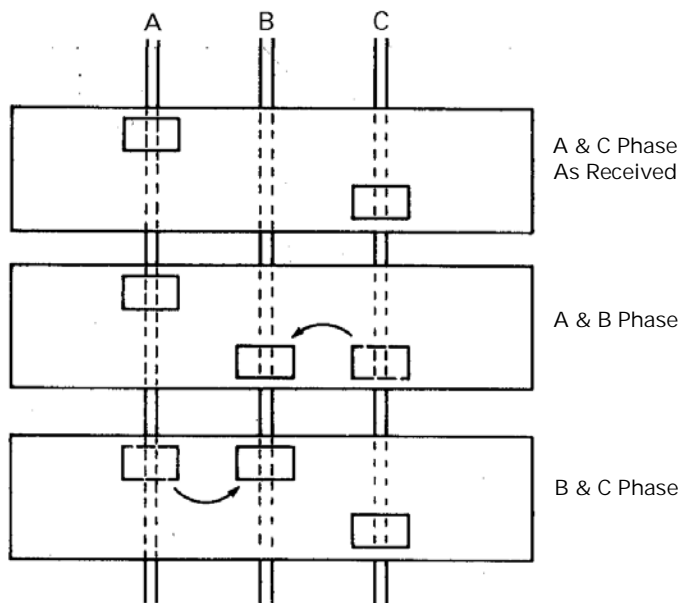


Figure 9. Repositioning the bus clip to balance the load.

These instructions do not cover all details or variations in equipment nor do they provide for every possible contingency that may be met in connection with installation, operation, or maintenance. Should further information be desired or should particular problems arise that are not covered sufficiently for the purchaser's purposes, the matter should be referred to the GE Company.

g

GE Industrial Systems