



Spectra Series™ Power Panelboards

Permanent Circuit Markers



WARNING: Danger of electrical shock or injury. Turn OFF power ahead of the panelboard or switchboard before working inside the equipment or removing any component. Equipment is to be installed and maintained by properly trained and qualified personnel only.

These instructions apply to installation of catalog numbers APN49 (for numbers 1–49) and APN99 (for numbers 1–99). Table 1 lists the contents of the marker kits. Table 2 lists the marker strips used for various interior heights.

Cat. No.	Description	Qty.
252B1679P1	Marker strip (5X), 10 circuits	2
252B1679P2	Marker strip (10X), 20 circuits	2
252B1679P3	Marker strip (13X), 26 circuits	2
N605P13005B	Thread-forming screw, #6-32 x 5/16	24
264V287P1–49	Permanent marker tabs (in APN49)	49
264V287P1–99	Permanent marker tabs (in APN99)	99

Table 1. Contents of the permanent circuit marker kits.

Interior Height, X = 13 ³ / ₈ "	Marker Strips, Two Each
13	252B1679P3
18	252B1679P1 252B1679P3
23	252B1679P2 252B1679P3
28	252B1679P1 252B1679P2 252B1679P3
33	252B1679P2 252B1679P3
38	252B1679P1 252B1679P2 252B1679P3
43	252B1679P2 252B1679P3
48	252B1679P1 252B1679P2 252B1679P3
53	252B1679P2 252B1679P3

Table 2. Marker strips to use for various interior heights.

Drill the Mounting Holes

WARNING: Eye protection is required for this operation.

Use a marker as a template. Place the strip at the dimension shown in Figure 1 (from the outside edge of the side trim) and directly opposite the mounted devices. Drill a 0.120-inch diameter hole (#31 drill) at each end of the marker. Some markers will have more than two holes, depending on their lengths.

Install the Marker Strips

Insert a marker into the retainer strips mounting holes next to the circuit to be identified. Form the marker legs over to secure the marker in the mounting strip hole. When all the required circuit markers are attached, install the retainer strip to the front shield with the #6-32 pan-head thread-forming screws provided, as shown in Figure 2.

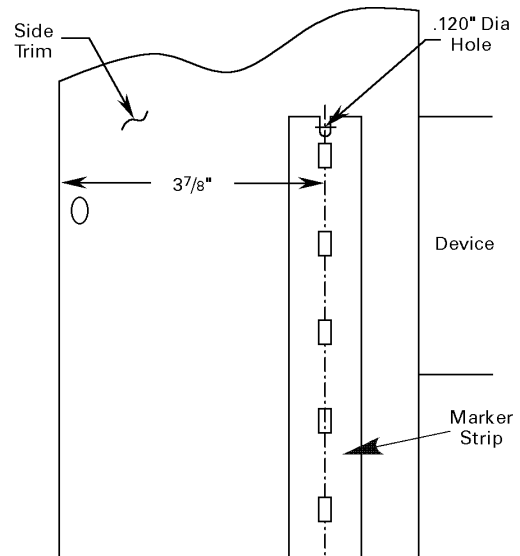


Figure 1. Drilling the mounting holes.

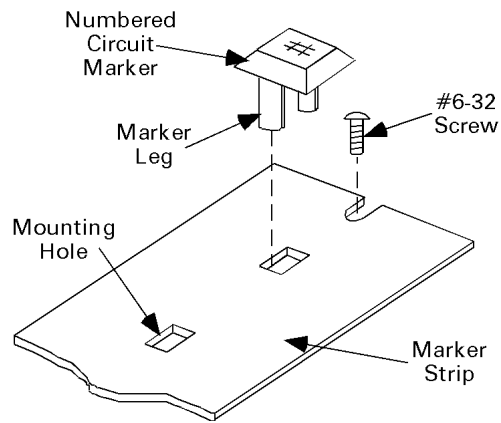


Figure 2. Installing the marker strips.

These instructions do not cover all details or variations in equipment nor do they provide for every possible contingency that may be met in connection with installation, operation, or maintenance. Should further information be desired or should particular problems arise that are not covered sufficiently for the purchaser's purposes, the matter should be referred to the GE Company.



GE Industrial Systems