



## Spectra RMS™ Circuit Breakers

### Mounting of Face-Mounted Interlock for SE150 and SF250 Circuit Breakers

REMOVE ACCESSORY COVER SCREW (1 PER BREAKER), BEFORE MOUNTING THE INTERLOCK MECHANISM. (Brass inserts were not provided to secure the accessory covers in early production SE and SF circuit breakers. If you are accessorizing a circuit breaker without brass inserts, use the longer thread forming screws provided with the accessory.)

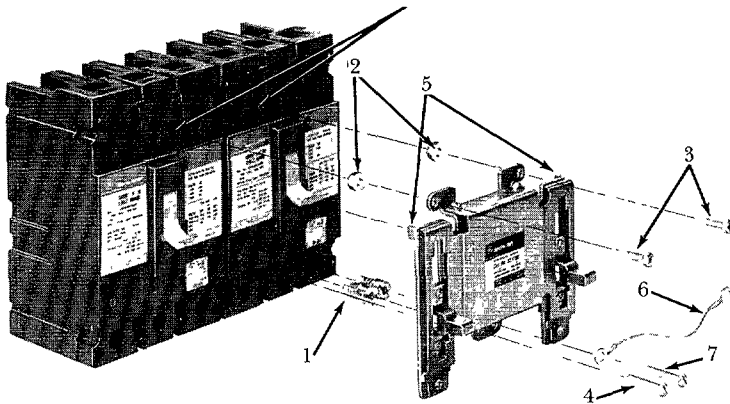


Figure 1. Typical SE150 Breaker Frame

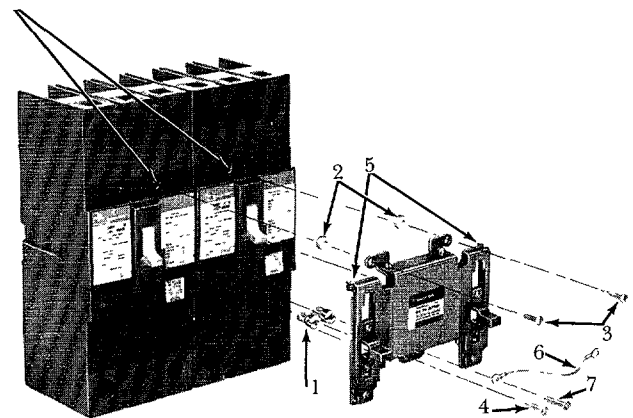


Figure 2. Typical SF250 Breaker Frame

#### DESCRIPTION

The face-mounted interlock prevents two adjacent breakers from being in the ON position at the same time. Otherwise, the interlock will allow manual operation of each breaker.

With optional adaptor kits, external accessories (such as handle operators and motor-operated mechanisms) can be mounted onto the face-mounted interlock. See Table 1.

#### PACKAGE CONTENTS

The package consists of the face-mounted interlock and all the hardware required for mounting it onto the breaker. Refer to the enclosed parts list for detailed part descriptions of the hardware.

#### MOUNTING INSTRUCTIONS

1. Mount each breaker per Figure 1 and Figure 3 (SE150) or Figure 2 and Figure 4 (SF250).
2. Move the breaker and interlock handles into the OFF position.
3. Remove the accessory cover screws—1 per breaker—and discard them (Figures 1 and 2).
4. Thread two spacer inserts (1) and tighten into the breaker cover until the shoulder is seated. DO NOT OVERTIGHTEN (3 in.-lbs. maximum).
5. Position the face-mounted interlock so the breaker handles fit into the corresponding recesses of the interlock.
6. Place spacers (2) between the interlock and breaker and loosely thread two pan slotted M3.5 (3) screws through the interlock mounting holes and into the accessory cover screw holes of the breaker.
7. Loosely thread one machine screw (4) through an interlock mounting hole and into the spacer insert.
8. Slide the face-mounted interlock downwards until the locating tabs (5) come into contact with each breaker escutcheon. Tighten the two M3.5 pan slotted screws (3) that secure the accessory cover to 8 in.-lbs. and the remaining screw (4) to 12 in.-lbs.
9. Secure the ground wire (6) with a machine screw (7) through the remaining interlock mounting hole and tighten to 12 in.-lbs. maximum.
10. To verify non-interlocked operation, place both breakers in the "OFF" position. It should be possible to turn either breaker "ON" and then "OFF".
11. To verify interlocked operation, turn one breaker "ON". It now should NOT be possible to turn the other breaker "ON".

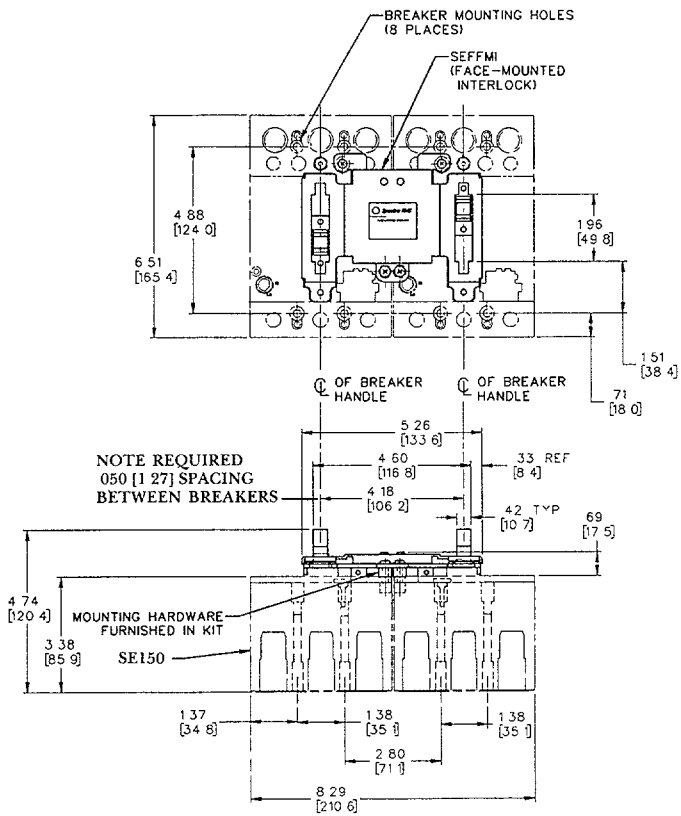


Figure 3. Typical SE150 Frame

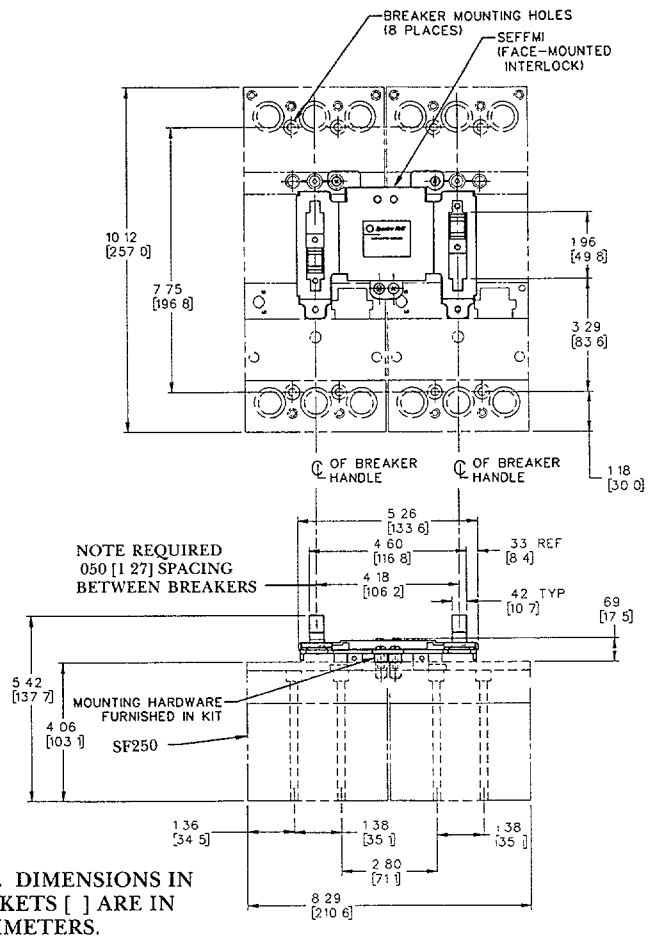


Figure 4. Typical SF250 Frame

NOTE DIMENSIONS IN BRACKETS [ ] ARE IN MILLIMETERS.

### TABLE 1. Optional Adaptor Kits

Optional adapter kit is required for mounting face-mounted interlock in conjunction with motor-operated mechanism, TDR handle or TDM handle operating mechanism. Not required to mount face-mounted interlock alone.

Accessory Catalog No.	Accessory Description	Adaptor Kit No. for SE150 and SF250
SEMOM1, 2, 8, 9—MOD 2 SFMOM1, 2, 8, 9—MOD 2	Motor-Operated Mechanism	SEFFMIAK
SEFHM1, SEFHM2 SEFOM1, SEFOM2	TDM Handle Operating Mechanism	

NOTE: Motor-operated mechanism must be Mod. 2 to function properly with Face-Mounted Interlock.

These instructions do not purport to cover all details or variations in equipment nor to provide for every possible contingency to be met in connection with installation operation or maintenance. Should further information be desired or should particular problems arise which are not covered sufficiently for the purchaser's purposes, the matter should be referred to the GE Company.



**GE Electrical Distribution & Control**