



Spectra RMS™ Molded Case Circuit Breakers

Plug-In Base for SG600 Circuit Breaker

DESCRIPTION

The Plug-In Base allows for easy removal and insertion of a circuit breaker.

The plug-in base mounts to either line or load end of the circuit breaker. The bus bars are available from the factory in a vertical position. See Figure 1.

Arrangement of bus bars are available in either the short-long-short version, catalog number SGPC1 or long-short-long, catalog number SGPC2. See Figure 2.

RATINGS

Catalog No.	SGPC1 & SGPC2		
Volts	240	80	600
Interrupt Rating (RMS) kA	200	100	50
Continuous Rating (I)	600		
HZ	50/60		

KIT CONTENTS

1. Plug-In Base for line or load end of breaker.
- *2. Base to Breaker Mounting screws. Size: #10-32x3 3/4" long.
3. Male Plugs and hardware for mounting to breaker.
4. Lug Covers—(extended).
5. Base mounting hardware.

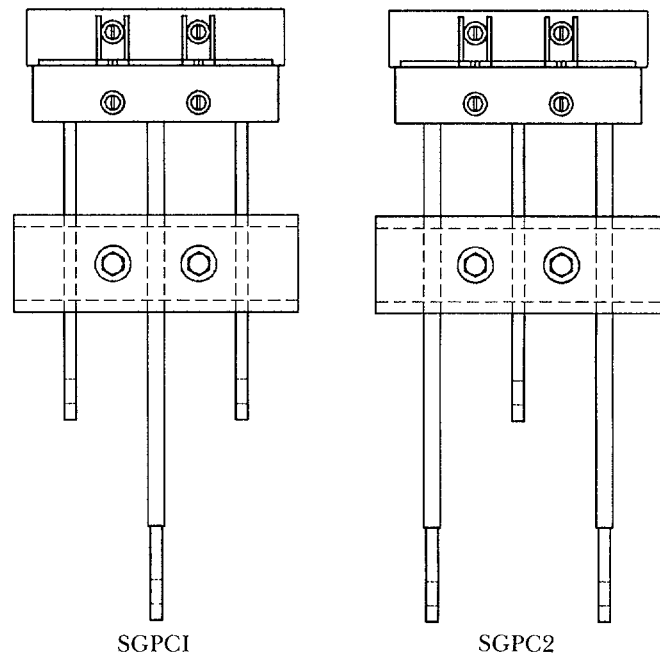


Figure 2.

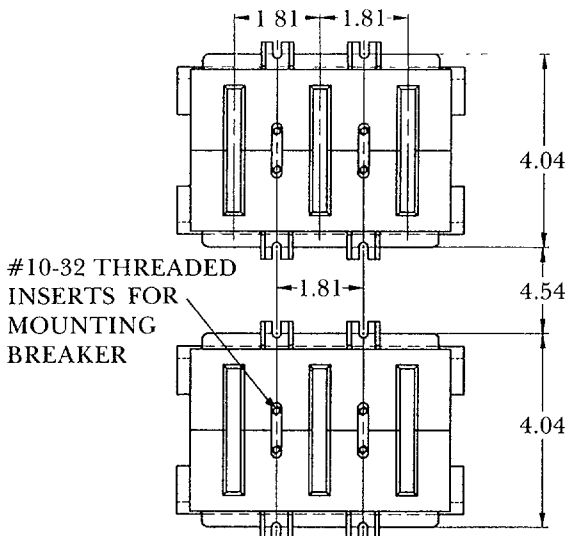


Figure 1.

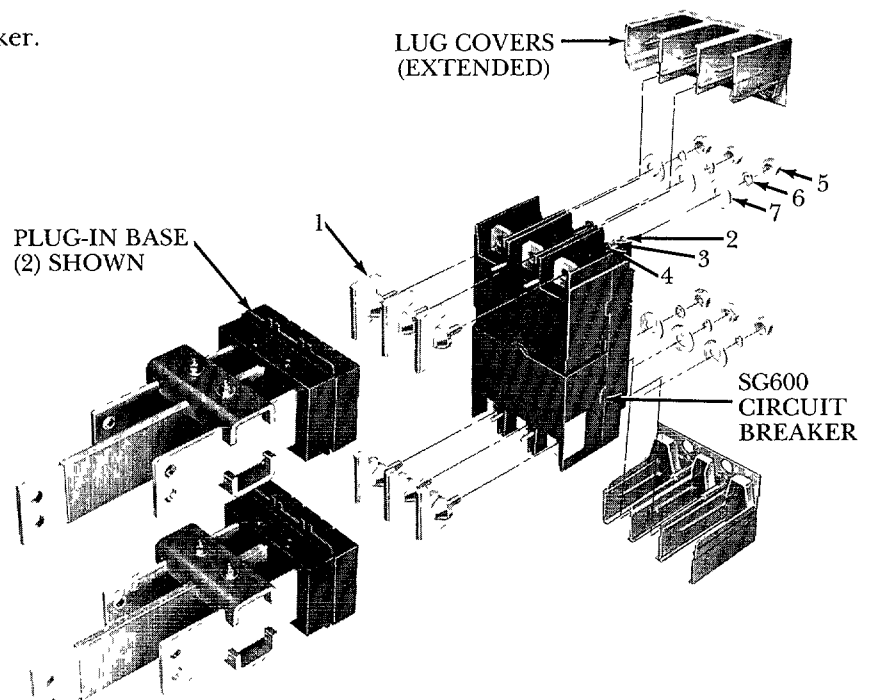


Figure 3.

* Alternate mounting stud cat no SGMSKOM, supplied at no charge, required when a plug-in base is used with a motor operated mechanism or an integral handle

PLUG-IN BASE MOUNTING INSTRUCTIONS

1. Mount Plug-in Bases to existing structure or panel and space them according to the diagram in Figure 1. Secure bases using #8-32 × 1/2" long screws, lockwashers, flatwashers and hex nuts.
2. **IMPORTANT.** Apply grease (provided in hardware kit) to internal contacts of both line and load Plug-In Bases. Mount male plugs (1) to Plug-In Base one at a time. Insertion force is 35–45 lbs. each. This procedure will guarantee proper central alignment between plugs and internal contacts while bolting base to breaker. See Figure 3 for orientation.
3. Remove bus cover which is supplied on the upper breaker end.
4. Secure SG600 breaker to line and load Plug-In Bases using four #10-32 × 3 7/8" long screws (2), lockwashers (3), and flatwashers (4). Next secure male plugs to breaker terminals using six hex nuts (5), lockwashers (6), and flatwashers (7). Torque nuts to 60 in.-lbs. See Figure 3.
5. Mount Lug Covers on both ends of the breaker by sliding them into slots provided. Seat them by pressing down.

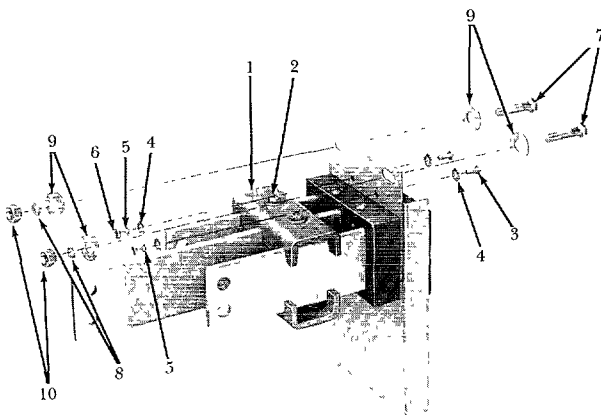


Figure 4.

PLUG-IN BASE PAN CAT. NO. SMP3

Note: The SMP3 mounting pan is not included with the Plug-In Base kit and must be ordered separately.

MOUNTING INSTRUCTIONS

1. Remove channel supports (1) from bus bars by removing two 1/4" bolts (2).
2. Slide Plug-In Bases through rectangular holes in the pan. Secure bases to the pan using eight #8-32 × 1/2" long screws (3), flatwashers (4), lockwashers (5), and hex nuts (6). This hardware is provided in the Plug-in base kit. See Figure 4.
3. Replace channel supports onto bus bars insert bolts, washers and nuts. Torque the assembly to 30 in.-lb. max.
4. Secure Plug-In Base and Pan assembly to existing structure or panel using four #5/16-18 × 1" long bolts (7), lockwashers (8), flatwashers (9), and hex nuts (10).
5. Refer to Plug-in base mounting instructions to secure the SG600 circuit breaker.

IMPORTANT NOTE: When using MOM or TDR Integral Handle with Plug-in Base, order special mounting bolts, Cat. No. SGMSKMOM.

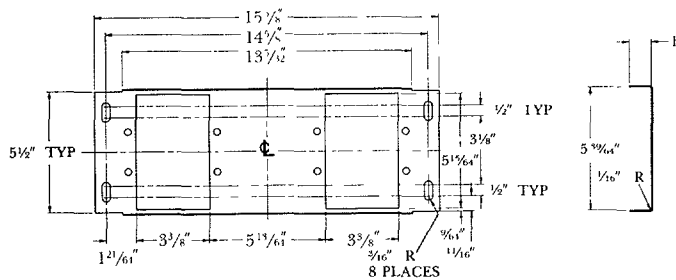


Figure 5.
Pan Outline

These instructions do not purport to cover all details or variations in equipment nor to provide for every possible contingency to be met in connection with installation operation or maintenance. Should further information be desired or should particular problems arise which are not covered sufficiently for the purchaser's purposes, the matter should be referred to the GE Company.



GE Electrical Distribution & Control

General Electric Company
41 Woodford Ave, Plainville, CT 06062