



# Spectra Series™ Power Panelboards

## Circuit Breakers and Modules



**WARNING:** Danger of electrical shock or injury. Turn OFF power ahead of the panelboard or switchboard before working inside the equipment or removing any component. Do not remove circuit protective devices or any other component until the power is turned OFF.

### General

These instructions apply to the following catalog numbers:

- Circuit breaker modules AMC2GM and AMC3GM
- Circuit breaker frames SGDA, SGHA, SGLA and SGPA

### Installation

**1. Phase balancing for two-pole devices on three-phase systems.** Reposition the bus clip assembly from A or C phase to B phase as shown in Figures 1 and 2. Remove the screws and the bus clip assembly. Move the bus clip to the B phase location. Fasten the bus clip assembly with the screws tightened to 27–32 in-lb.

**2. Install the circuit breaker.**

- Main devices (lugs only on ON side of circuit breaker).** Place the OFF side of the breaker over the stud posts, as shown in Figure 3. Secure the breaker OFF side to the module with hex-head screws and Belleville washers and tighten to 90–110 in-lb. Secure the breaker ON side to the module with round-head screws and flat washers and tighten to 40–50 in-lb.
- Branch devices (lugs only on OFF side of the breaker).** Place the ON side of the breaker over the stud posts, as shown in Figure 3. Secure the breaker ON side to the module with head-head screws and Belleville washers and tighten to 90–110 in-lb. Secure the breaker OFF side to the module with round-head screws and flat washers and tighten to 40–50 in-lb.

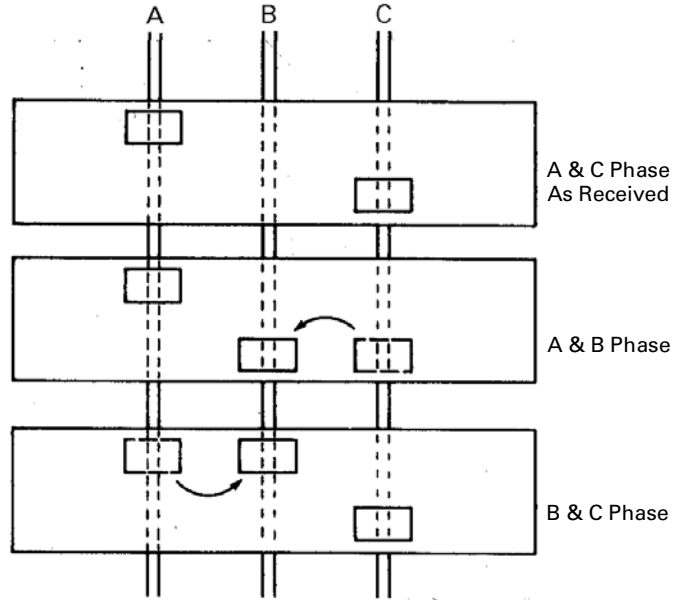


Figure 2. Phase diagram showing positions of bus clips.

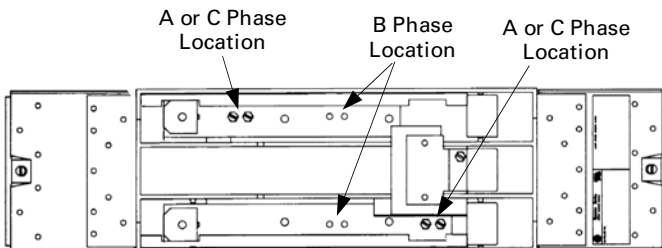


Figure 1. Bus clip locations on the breaker module.

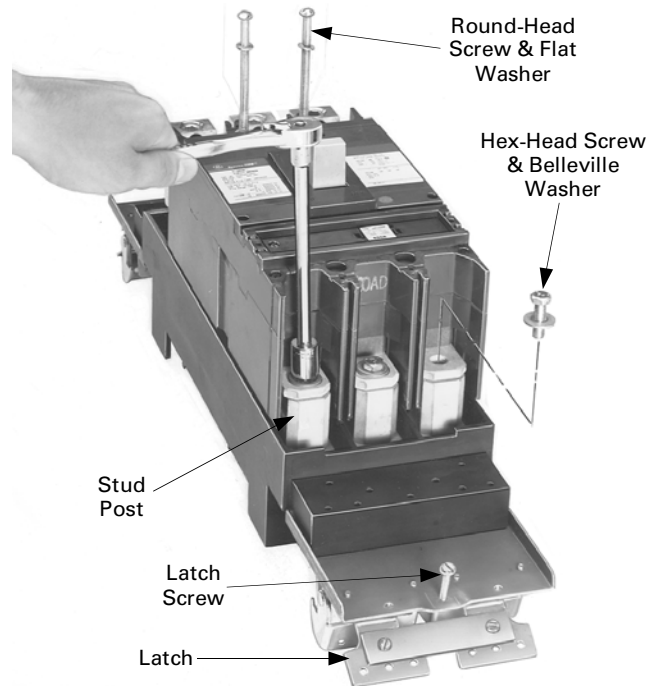


Figure 3. Installing the breaker on the module.

- 3. Install the breaker module.** Fully retract the latches and hook one side of the breaker module to the interior rail, as shown in Figure 4. Release the latch. Pivot the module onto the bus bars and engage the second latch. Release the latch. Tighten the latch screws to 25 in-lb, as shown in Figure 5.

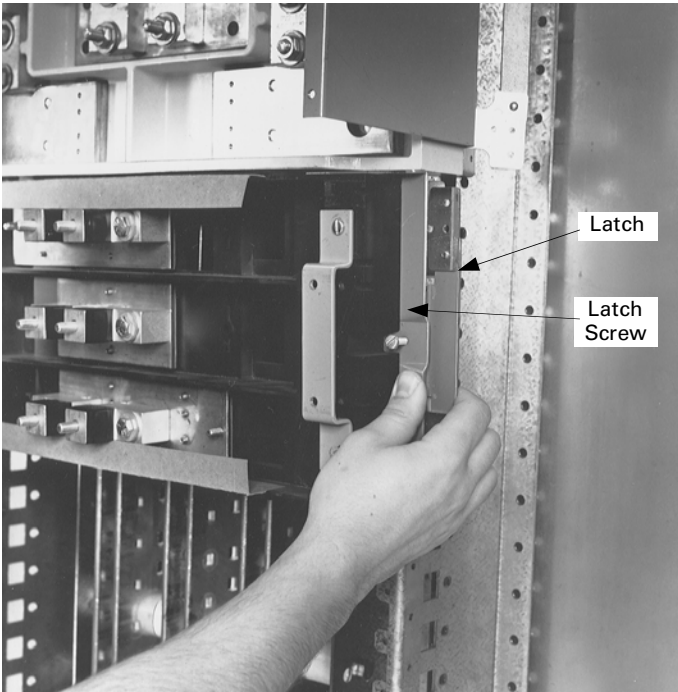


Figure 4. Positioning the breaker module on the interior rail.

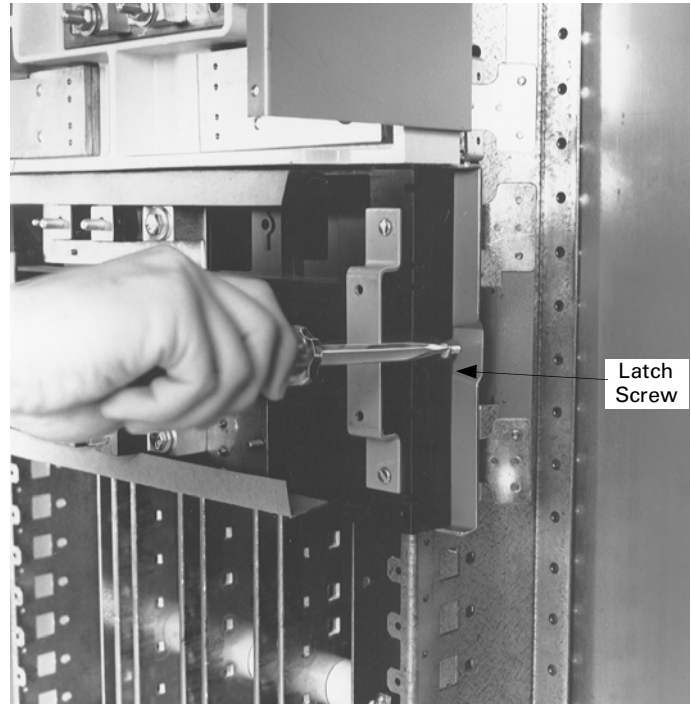


Figure 5. Securing the module to the interior.

- 4. Wire the circuits.** Refer to the label on the circuit breaker for the proper tightening torque.
- 5. Filler plate kits.** Install filler plate kit AFP4SGS on the module.

### **Attention – Procedure for Aluminum Terminations**

1. Strip the insulation, being careful to not nick the wire.
2. Clean the wire strands with a wire brush.
3. Thoroughly coat the stripped conductor with a suitable antioxidant compound, such as ALNOX or PENETROX A13.
4. Insert the conductor and tighten the connector screw to the torque indicated on the rating label.

These instructions do not cover all details or variations in equipment nor do they provide for every possible contingency that may be met in connection with installation, operation, or maintenance. Should further information be desired or should particular problems arise that are not covered sufficiently for the purchaser's purposes, the matter should be referred to the GE Company.



**GE Industrial Systems**

General Electric Company  
41 Woodford Ave., Plainville, CT 06062