

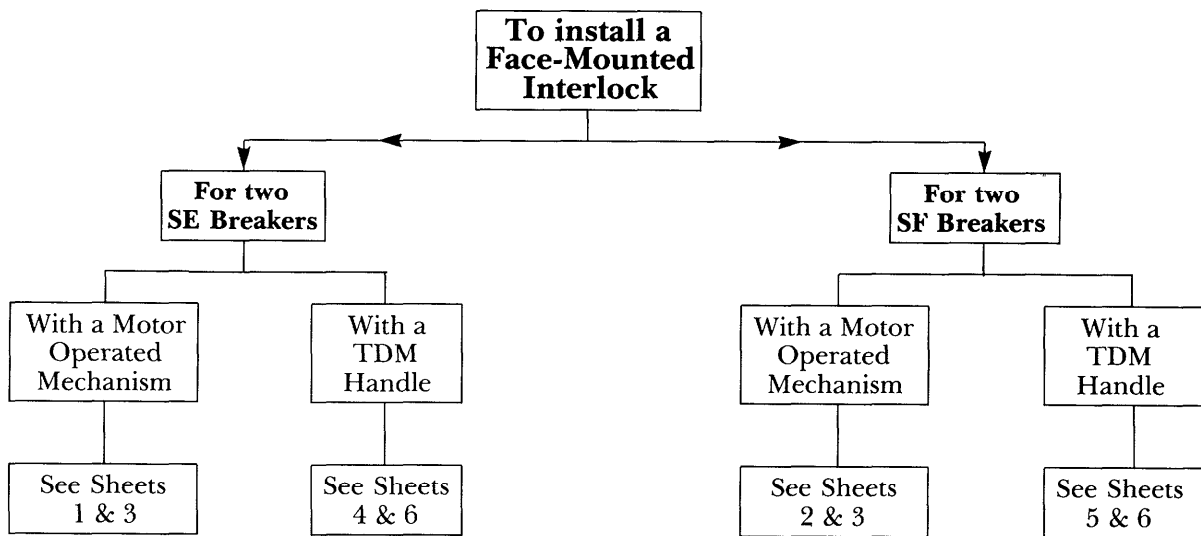


Spectra RMS™ Molded Case Circuit Breaker Accessories

Adapter kit Cat. No. SEFFMIAK for mounting Face-Mounted Interlock Mechanisms, and TDM Handle Operators or Motor Operated Mechanisms on types SE or SF Spectra RMS circuit breakers

DESCRIPTION: This adapter kit contains additional hardware required to mount either motor-operated mechanisms (MOM's) or TDM Handle operators to two SE or SF breakers when they are to be equipped with a face-mounted interlock, Cat. No. SEFFMI. Hardware provided with the motor operators, handle operators, and face-mounted interlock accessory is also required to complete the assembly. (Face-mounted interlocks are not compatible with rotary Type TDR Handle operators.)

Use the chart below to identify which of the attached sheets you will need to complete your installation. **The remaining sheets can be eliminated.**



Assembly of Motor-Operated Mechanisms and Face-Mounted Interlock to Two SE Breakers

INSTALLING THE FACE MOUNTED INTERLOCK

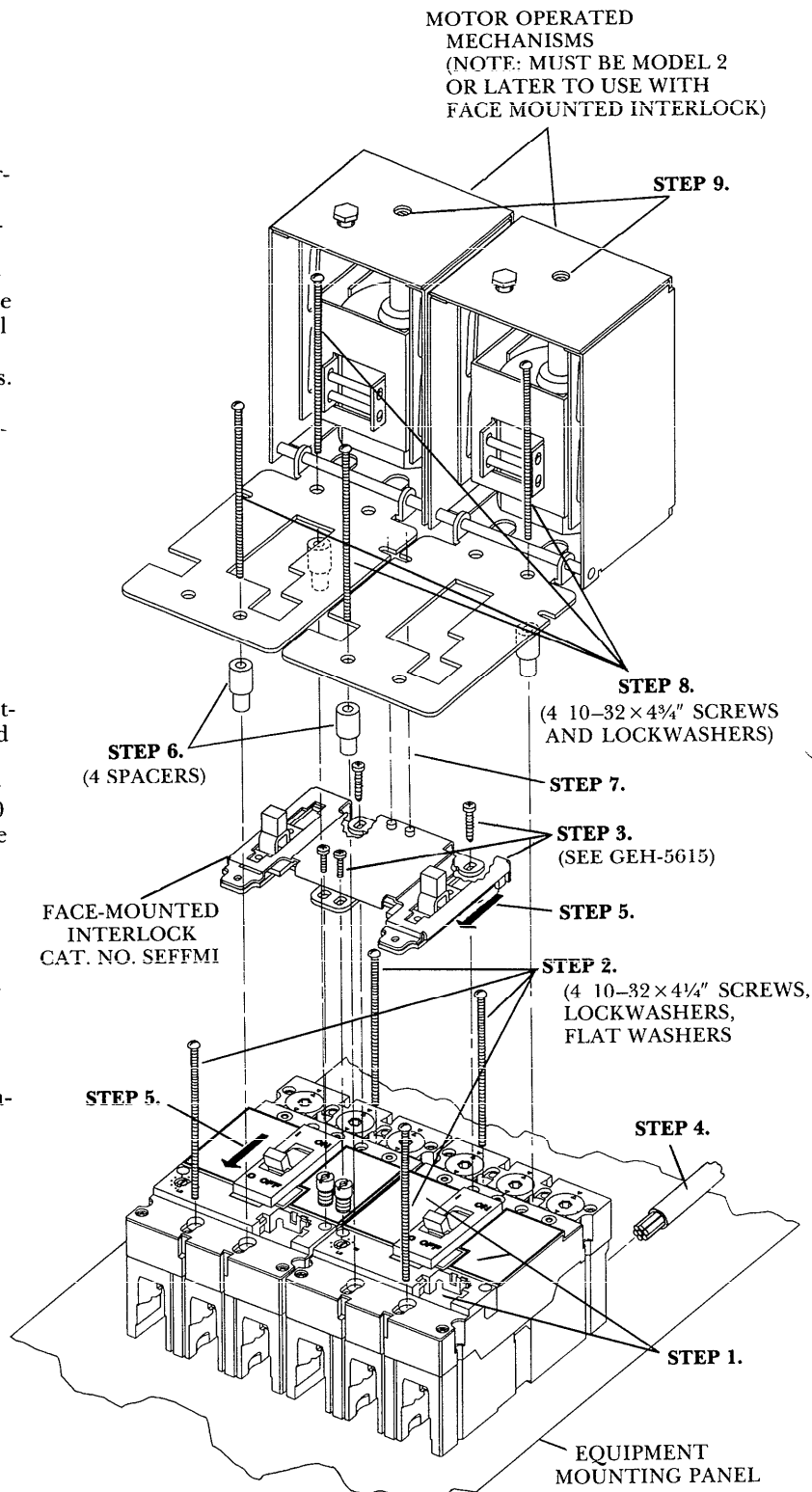
- STEP 1.** Install rating plugs and any required internal accessories.
- STEP 2.** Mount the breakers to equipment mounting panel using the diagonal mounting screw locations and hardware shown. Use #10 lockwashers and #10-32 nuts if there are clearance holes in the mounting panel instead of tapped holes.
- STEP 3.** Mount the interlock on top of the breakers. See instruction sheet GEH-5615A.
- STEP 4.** Attach line and load circuit breaker terminals and conductors. Torque to specified value.

INSTALLING THE MOTOR-OPERATED MECHANISM (MOM)

- STEP 5.** Move breaker handles, interlock, and MOM's to OFF position.
- STEP 6.** Insert two spacers in each breaker.
- STEP 7.** Locate the slot cutout in the MOM mounting plate, and place over the locating stud of the interlock.
- STEP 8.** Secure a MOM to each breaker using opposite diagonal mounting holes. Use #10 lockwashers and #10-32 nuts if there are clearance holes in the mounting panel instead of tapped holes.
- STEP 9.** Align each racking mechanism of the MOM with the interlock handles before closing the cover.
- STEP 10.** See instruction sheet GEH-5613 for electrical wiring and testing of the MOM.

CAUTION: Using the Motor Operated Mechanisms to close both breakers at the same time may cause physical damage to the assembly.

It is recommended that a back-up electrical interlock be co-used to prevent this situation from occurring.



Assembly of Motor-Operated Mechanisms and Face-Mounted Interlock to Two SF Breakers

MOTOR OPERATED MECHANISMS
(NOTE: MUST BE MODEL 2 OR LATER TO USE WITH FACE MOUNTED INTERLOCK)

INSTALLING THE FACE-MOUNTED INTERLOCK

- STEP 1.** Install rating plugs and any required internal accessories.
- STEP 2.** Mount the breakers to equipment mounting panel using the diagonal mounting screw locations and hardware shown. Use #10 lockwashers and #10-32 nuts if there are clearance holes in the mounting panel instead of tapped holes.
- STEP 3.** Mount the interlock on top of the breakers. See instruction sheet GEH-5615A.
- STEP 4.** Attach line and load circuit breaker terminals and conductors. Torque to specific value.

INSTALLING THE MOTOR-OPERATED MECHANISM (MOM)

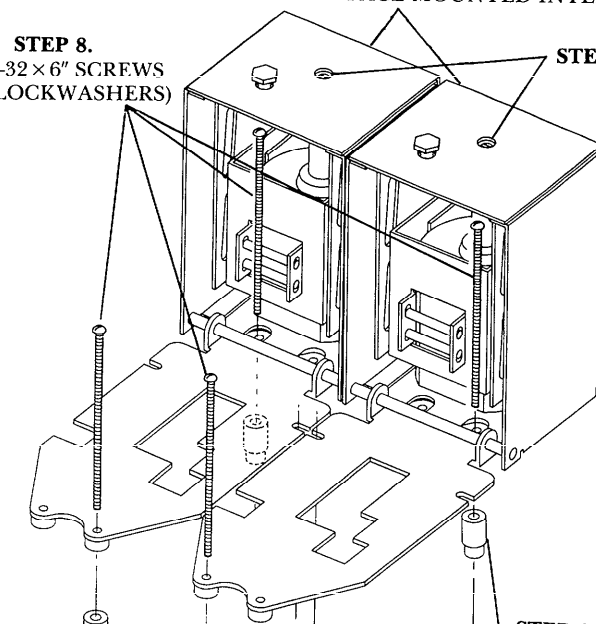
- STEP 5.** Move breaker handles, interlock and MOM's to OFF position.
- STEP 6.** Insert two spacers in each breaker.
- STEP 7.** Locate the slot cutout in the MOM mounting plate, and place over the locating stud of the interlock.
- STEP 8.** Secure a MOM to each breaker using opposite diagonal mounting holes. Use #10 lockwashers and #10-32 nuts if there are clearance holes in the mounting panel instead of tapped holes.
- STEP 9.** Align each racking mechanism of the MOM with the interlock handles before closing the cover.
- STEP 10.** See Instruction sheet GEH-5613 for electrical wiring and testing of the MOM.

CAUTION: Using the Motor Operated Mechanisms to close both breakers at the same time may cause physical damage to the assembly.

It is recommended that a back-up electrical interlock be co-used to prevent this situation from occurring.

STEP 8.
(4 10-32x6" SCREWS AND LOCKWASHERS)

STEP 9.



STEP 6.

STEP 7.

STEP 5.

STEP 3.
(SEE GEH-5616)

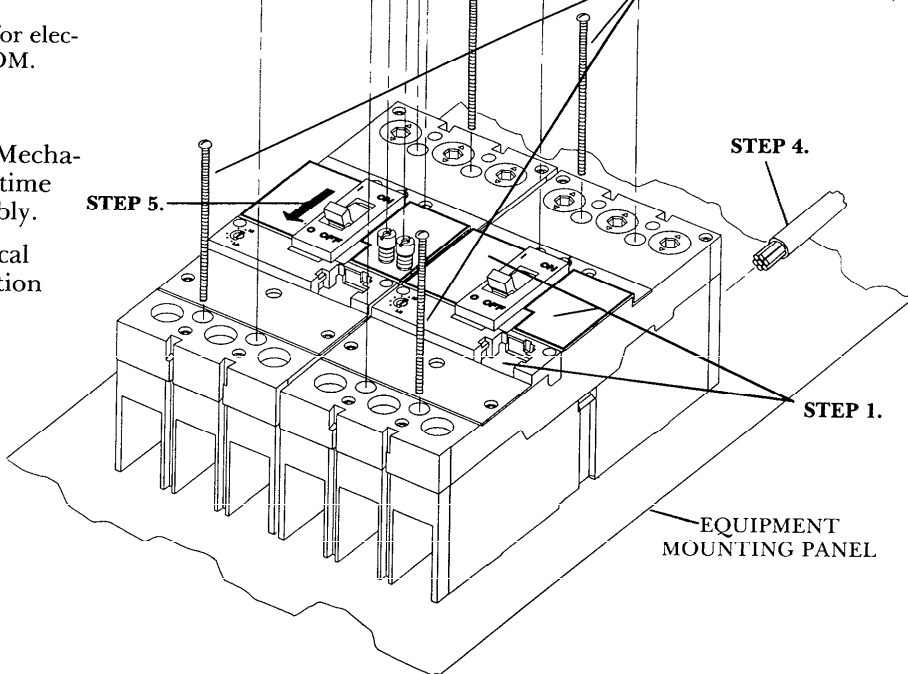
STEP 2.
(4 10-32x6" SCREWS AND LOCKWASHERS)

STEP 5.

STEP 4.

STEP 1.

EQUIPMENT MOUNTING PANEL



Hardware for Assembling Motor-Operated Mechanisms and Face-Mounted Interlocks to Two SE or SF Breakers

Quantity	Description	Where Found	Used on		Part No. (reference only)
			SE	SF	
4	Spacer	Bag 'A' of SEFFMIAK Adapter Kit	✓		331A1758P1 N37P16076B13 331A1760P1
4	Screw, 10-32 × 4¾		✓		
4	Spacer			✓	
2	Insert/Spacer	Hardware Kit with Cat. No. SEFFMI	✓	✓	331A1714P1 N120P15008B 331A1802P1 252B1069P5 331A1625P1 791A507G5
2	Screw, 8-32 × ½		✓	✓	
2	Spacer (.27 dia. × .12 long)		✓	✓	
2	Screw, 6-19 × 1½ self tap		✓	✓	
2	Spacer (.27 dia. × .19 long)		✓	✓	
1	Ground wire		✓	✓	
4	Screw, 10-32 × 4¼	Motor operated Mechanisms	✓		N37P16068B13 N405P39B13 N37P16096B13 N210P16B13 N402P39B13
8	Lockwasher #10		✓*	✓*	
8	Screw, 10-32 × 6			✓	
8	Nut, 10-32		✓*	✓*	
8	Flatwasher, #10		✓*	✓*	

*Used when mounting panel has clearance holes rather than tapped holes.

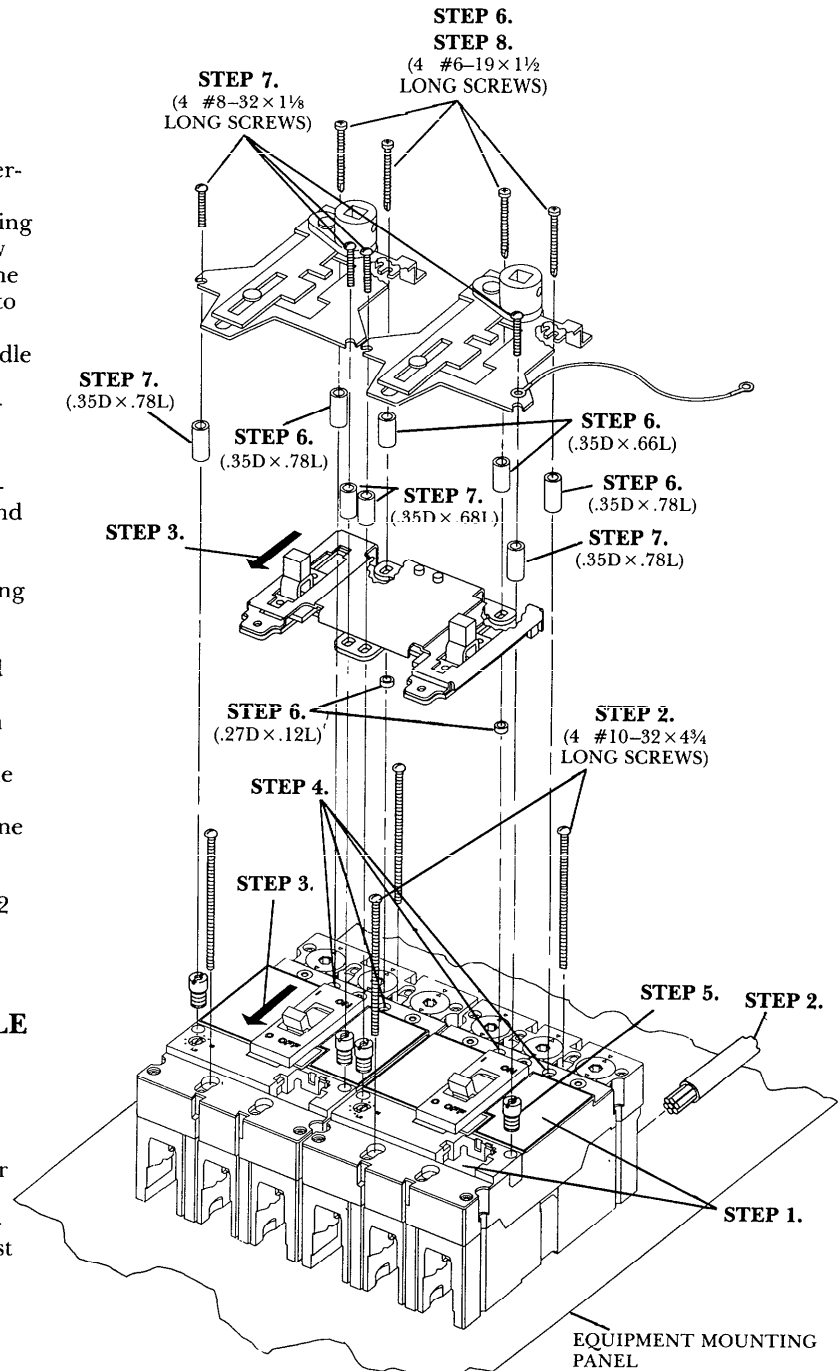
Assembly of TDM Type Handle Operators and Face-Mounted Interlock to Two SE Breakers

INSTALLING TYPE TDM HANDLE OPERATING MECHANISM AND FACE-MOUNTED INTERLOCK ON SF BREAKERS

- STEP 1.** Install rating plugs and any required internal accessories to the circuit breakers.
- STEP 2.** Mount the breakers to equipment mounting panel using the diagonal mounting screw locations and hardware shown. Attach line and load lugs and cables. Torque cables to specified value.
- STEP 3.** Move breaker handles, interlock and handle operator mechanism to **OFF** position.
- STEP 4.** Remove the four existing accessory cover door screws in the breakers, and discard them.
- STEP 5.** Thread four spacer inserts into the accessory cover screw holes in each breaker, and tighten (3 in.-lbs. max.) into the breaker cover until the shoulder is seated.
- STEP 6.** Loosely mount the four longer self tapping screws through the spacers into each breaker cover (inner screws use two spacers). Leave $\frac{1}{8}$ " space between spacer and head of screw.
- STEP 7.** Hang the handle operator mechanism on the loosely mounted self tapping screws, and slide the interlock downward until the locating tabs contact the breaker escutcheon. Tighten (12 in.-lbs. max.) the machine screws through the ground wire and spacers.
- STEP 8.** Tighten the long self tapping screws to 12 in.-lbs. max.

INSTALLING TYPE SEFOM2 HANDLE OPERATOR MECHANISM

- STEP 1.** Measure and cut shaft length to size.
- STEP 2.** Insert shaft into handle operator mechanism, and tighten setscrew.
- STEP 3.** Refer to instruction sheet GEH-5611A for door drilling information and mounting of handle on panel door. Note: center-to-center spacing between door handles must be 4.18".



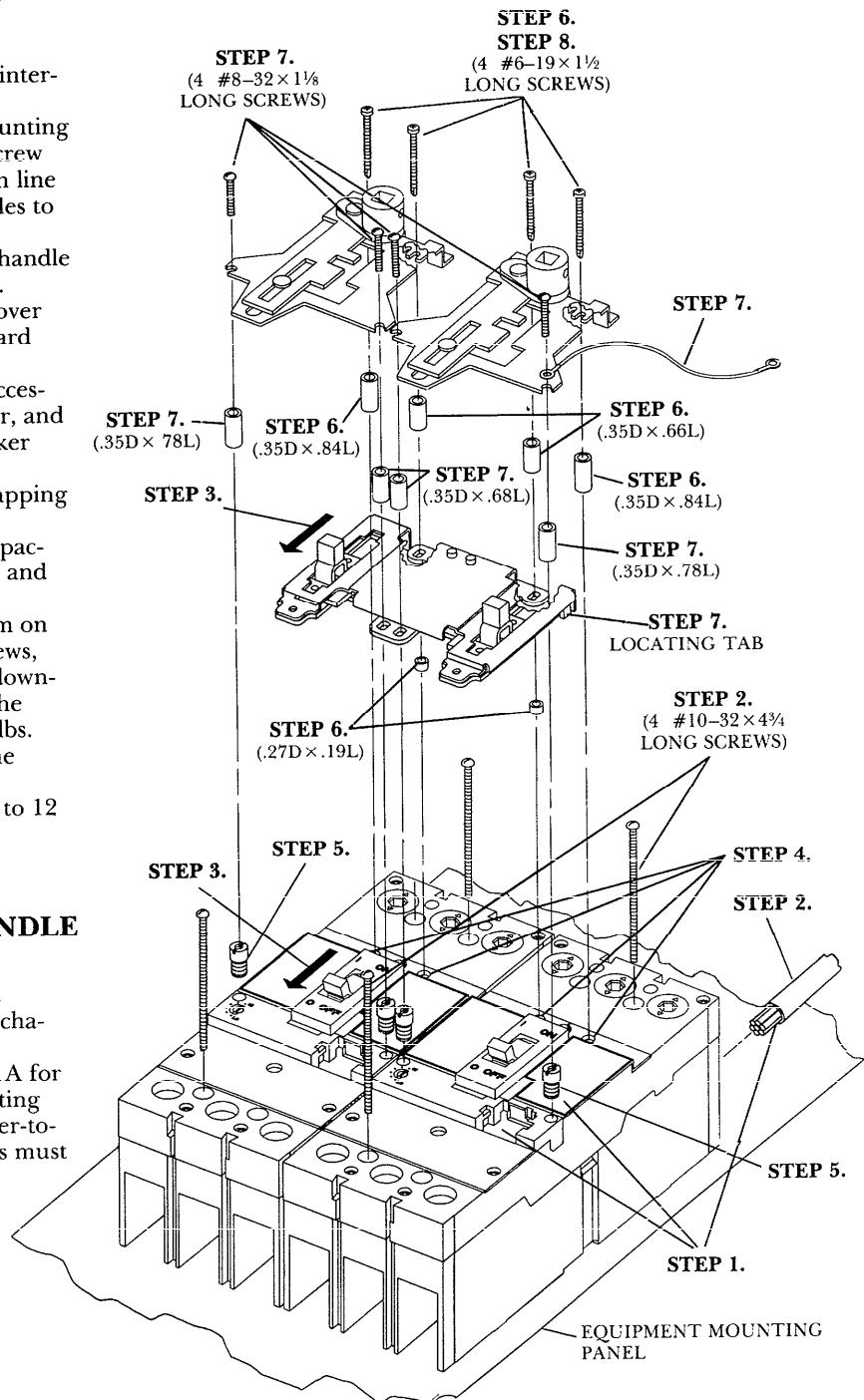
Assembly of TDM Type Handle Operators and Face-Mounted Interlock to Two SF Breakers

INSTALLING TYPE TDM HANDLE OPERATING MECHANISM AND FACE-MOUNTED INTERLOCK ON SE BREAKERS

- STEP 1.** Install rating plugs and any required internal accessories to the circuit breakers.
- STEP 2.** Mount the breakers to equipment mounting panel using the diagonal mounting screw locations and hardware shown. Attach line and load lugs and cables. Torque cables to specified value.
- STEP 3.** Move breaker handles, interlock and handle operator mechanism to **OFF** position.
- STEP 4.** Remove the four existing accessory cover door screws in the breakers, and discard them.
- STEP 5.** Thread four spacer inserts into the accessory cover screw holes in each breaker, and tighten (3 in.-lbs. max.) into the breaker cover until the shoulder is seated.
- STEP 6.** Loosely mount the four longer self tapping screws through the spacers into each breaker cover (inner screws use two spacers). Leave $\frac{1}{8}$ " space between spacer and head of screw.
- STEP 7.** Hang the handle operator mechanism on the loosely mounted self tapping screws, from Step 6, and slide the interlock downward until the locating tabs contact the breaker escutcheon. Tighten (12 in.-lbs. max.) the machine screws through the ground wire and spacers.
- STEP 8.** Tighten the long self tapping screws to 12 in.-lbs. max.

INSTALLING TYPE SEFOM2 HANDLE OPERATOR MECHANISM

- STEP 1.** Measure and cut shaft length to size.
- STEP 2.** Insert shaft into handle operator mechanism, and tighten setscrew.
- STEP 3.** Refer to instruction sheet GEH-5611A for door drilling information and mounting of handle on panel door. Note: center-to-center spacing between door handles must be 4.18".



Hardware for Assembling TDM Type Handle Operators and Face-Mounted Interlock to Two SE or SF Breakers

Quantity	Description	Where Found	Used on		Part No. (reference only)
			SE	SF	
2	Spacer (.35 dia. × .66 long)	Bag 'B' of SEFFMIAK Adapter Kit	✓	✓	331A1765P1
2	Spacer (.35 dia. × .68 long)		✓	✓	331A1765P2
4	Spacer (.35 dia. × .78 long)		✓	✓ ^①	331A1765P3
2	Spacer (.35 dia. × .84 long)		✓	✓	331A1765P4
4	Screw, sems 8-32 × 1½		✓	✓	N663P15018B13
4	Screw, 6-19 × 1½ self tap		✓	✓	N136P1324B6
2	Spacer (.27 dia. × .12 long)	Hardware Kit with Cat. No. SEFFMI	✓		331A1802P1
2	Spacer (.27 dia. × .19 long)		✓	✓	331A1625P1
1	Ground Wire		✓	✓	791A507G5
4	Insert/Spacer	In SEFOM1 or SEFOM2 Operating Mech.	✓	✓	331A1714P1
8	Screw, 10-32 × 3¾ long		✓	✓	N37P16060B13

① Two spacers used on SF breakers.

These instructions do not purport to cover all details or variations in equipment nor to provide for every possible contingency to be met in connection with installation operation or maintenance. Should further information be desired or should particular problems arise which are not covered sufficiently for the purchaser's purposes, the matter should be referred to the GE Company.



GE Electrical Distribution & Control