



GEJ 4652 R03 10 08 Installation Instructions

HANDLE TIES

For 2-Pole Operation Of Single Pole THQB, THQL or THQC Circuit Breakers

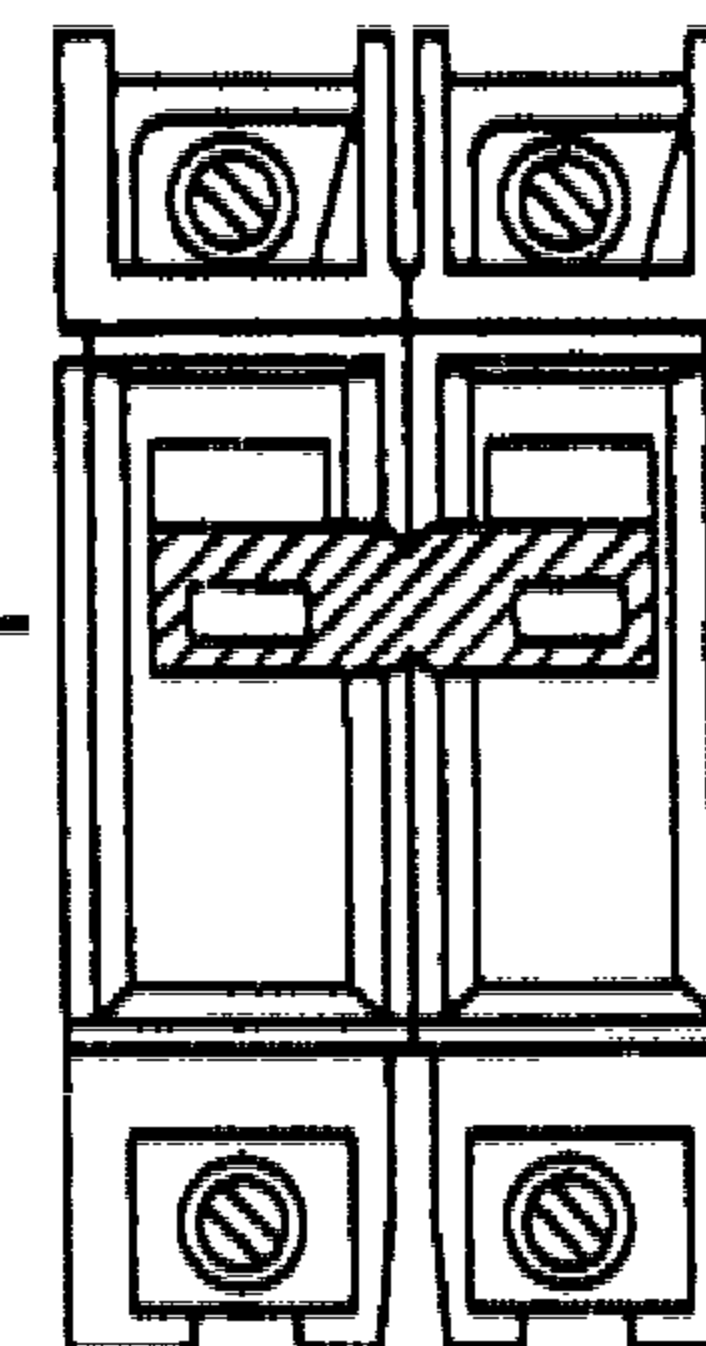
Catalog No.

TQHT1

Qty.

20

INSTALLATION: Turn both circuit breakers OFF. Center handle tie over each circuit breaker handle, and snap into place. Make sure that the ties interlock.



GE Electrical Distribution & Control General Electric Company, Plainville, CT 06062

©1990 General Electric Company

GEJ 4652 R03 10 08 Installation Instructions