

Catalog No. Qty

TGRK22 1 R-Class Fuse Kit

For Rejecting Fuses Other Than Class "R"

INSTALLATION INSTRUCTIONS:

1. Remove and discard the load end fuse clips from the load base assembly.
 2. Attach the fuse clip and connector assembly to the load base by inserting drive rivet with screwdriver or similar tool as shown. Torque lug screw to 30-40in-lbs.
- CAUTION:** Turn off power before working inside this equipment.

Note: For two pole devices omit third rejector.

ABB Inc. 305 Gregson Drive Cary, NC 27511

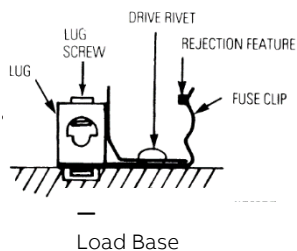
Electrification.us.abb.com

GE is a trademark of GE. Manufactured by ABB Inc. under license from GE.

15QC920024M0201, GEJ7454 September 2019



Industrial Solutions



by ABB

Catalog No. Qty

TGRK22 1 R-Class Fuse Kit

For Rejecting Fuses Other Than Class "R"

INSTALLATION INSTRUCTIONS:

1. Remove and discard the load end fuse clips from the load base assembly.
 2. Attach the fuse clip and connector assembly to the load base by inserting drive rivet with screwdriver or similar tool as shown. Torque lug screw to 30-40in-lbs.
- CAUTION:** Turn off power before working inside this equipment.

Note: For two pole devices omit third rejector.

ABB Inc. 305 Gregson Drive Cary, NC 27511

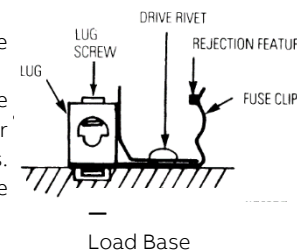
Electrification.us.abb.com

GE is a trademark of GE. Manufactured by ABB Inc. under license from GE.

15QC920024M0201, GEJ7454 September 2019



Industrial Solutions



by ABB

Catalog No. Qty

TGRK22 1 R-Class Fuse Kit

For Rejecting Fuses Other Than Class "R"

INSTALLATION INSTRUCTIONS:

1. Remove and discard the load end fuse clips from the load base assembly.
 2. Attach the fuse clip and connector assembly to the load base by inserting drive rivet with screwdriver or similar tool as shown. Torque lug screw to 30-40in-lbs.
- CAUTION:** Turn off power before working inside this equipment.

Note: For two pole devices omit third rejector.

ABB Inc. 305 Gregson Drive Cary, NC 27511

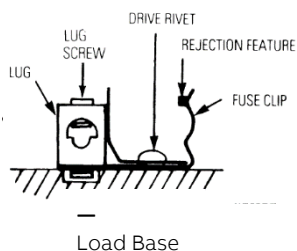
Electrification.us.abb.com

GE is a trademark of GE. Manufactured by ABB Inc. under license from GE.

15QC920024M0201, GEJ7454 September 2019



Industrial Solutions



by ABB

Catalog No. Qty

TGRK22 1 R-Class Fuse Kit

For Rejecting Fuses Other Than Class "R"

INSTALLATION INSTRUCTIONS:

1. Remove and discard the load end fuse clips from the load base assembly.
 2. Attach the fuse clip and connector assembly to the load base by inserting drive rivet with screwdriver or similar tool as shown. Torque lug screw to 30-40in-lbs.
- CAUTION:** Turn off power before working inside this equipment.

Note: For two pole devices omit third rejector.

ABB Inc. 305 Gregson Drive Cary, NC 27511

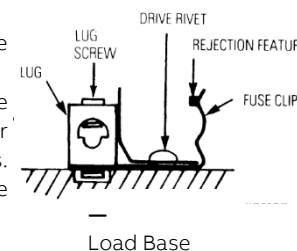
Electrification.us.abb.com

GE is a trademark of GE. Manufactured by ABB Inc. under license from GE.

15QC920024M0201, GEJ7454 September 2019



Industrial Solutions



by ABB