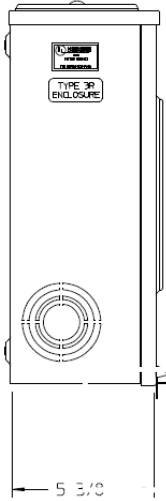
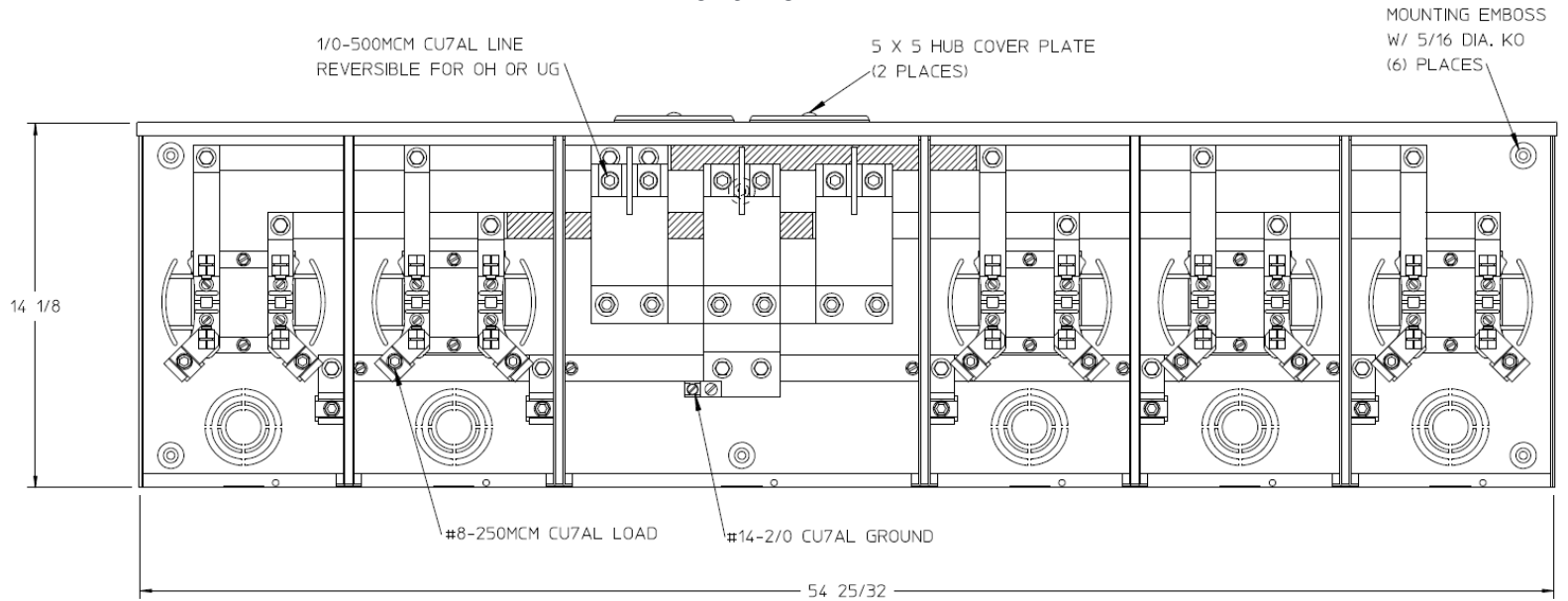


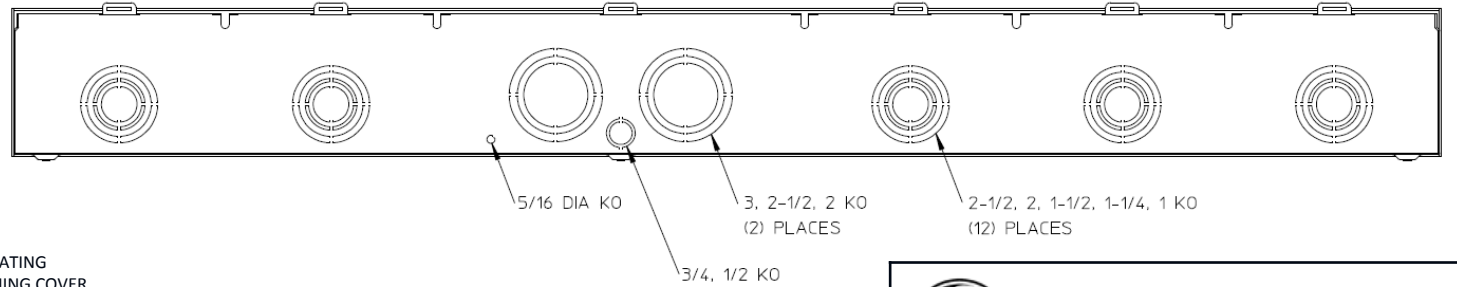
Side View



Front View



Bottom View



Notes

- 1) FINISH: GRAY
- 2) CABINET: 16 GA GALV. STEEL
- 3) 200 AMP CONTINUOUS PER POSITION
600VAC, 1 PHASE, 3-WIRE
500 AMP CONTINUOUS (TOTAL) UNIT RATING
- 4) TEMPORARY CARDBOARD METER OPENING COVER PROVIDED
- 5) GE LABEL ATTACHED TO THE END OF THE CARTON
- 6) GE LOGO LOCATED IN THE LOWER LEFT-HAND CORNER OF THE FRONT

GE is a registered trademark used under license from General Electric company.



HORIZ GANGED METER SKTS-(5) 200A 600V N3R 1P3W (2)
LARGE HUB CVR PLTS TPLX GRD 4-TRM CENTER FED G90

CAT NO	DWG DATE	REV #
GEKR5CS1ET	02/09/2016	01