

INTERNAL WIRE HARNESS COLOR CODES:
 R=RED P=PURPLE
 W=WHITE G=GREEN
 Y=YELLOW B=BLACK
 N=BROWN L=BLUE

INTERNAL WIRE COLOR	1A	1B	2A	2B
19	AUX. 11 "A"	AUX. 12 "A"		
20	AUX. 11 "B"	AUX. 12 "B"		
21	AUX. 11 COM	AUX. 12 COM		
22	AUX. 9 "A"	AUX. 10 "A"		
23	AUX. 9 "B"	AUX. 10 "B"		
24	AUX. 9 COM	AUX. 10 COM		
25	AUX. 7 "A"	AUX. 8 "A"		
26	AUX. 7 "B"	AUX. 8 "B"		
27	AUX. 7 COM	AUX. 8 COM		
28	AUX. 5 "A"	AUX. 6 "A"		
29	AUX. 5 "B"	AUX. 6 "B"		
30	AUX. 5 COM	AUX. 6 COM		
31	AUX. 3 "A"	AUX. 4 "A"		
32	AUX. 3 "B"	AUX. 4 "B"		
33	AUX. 3 COM	AUX. 4 COM		
34	AUX. 1 "A"	AUX. 2 "A"		
35	AUX. 1 "B"	AUX. 2 "B"		
36	AUX. 1 COM	AUX. 2 COM		

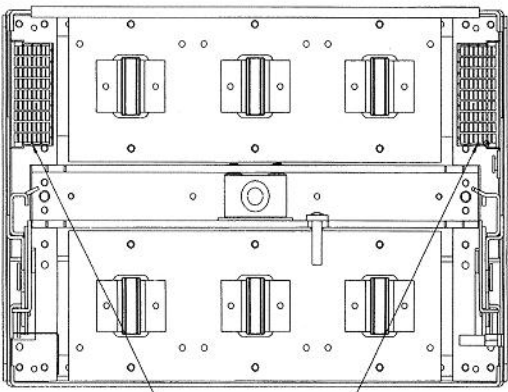
↑ FAR* ROW
 ↑ NEAR* ROW
LEFT SIDE
 TERMINAL BLOCK LABEL
BLOCK "A"

INTERNAL WIRE HARNESS COLOR CODES:
 R=RED P=PURPLE
 W=WHITE G=GREEN
 Y=YELLOW B=BLACK
 N=BROWN L=BLUE

1	36 ELECT. OPER.+ B	36 ELECT. OPER.+ B
2	35 RMT. CHG. L	35 RMT. CHG. L
3	34 RMT. CLS.- Y	34 RMT. CLS.- Y
4	33 CHG. IND. G	33 CHG. IND. G
5	32 SHUNT TRIP B	32 SHUNT TRIP B
6	31 SHUNT TRIP B	31 SHUNT TRIP B
7	30 U.V.R. L	30 U.V.R. L
8	29 U.V.R. L	29 U.V.R. L
9	28	28
10	27	27
11	26 ZSI INPUT- W	26 ZSI INPUT- W
12	25 ZSI INPUT+ G	25 ZSI INPUT+ G
13	24 ZSI OUTPUT- W	24 ZSI OUTPUT- W
14	23 ZSI OUTPUT+ R	23 ZSI OUTPUT+ R
15	22 D/O SWITCH W	22 D/O SWITCH W
16	21 D/O SWITCH L	21 D/O SWITCH L
17	20 A H TAP B	20 A H TAP B
18	19 B H COM W	19 B H COM W

↑ NEAR* ROW
 ↑ FAR* ROW
RIGHT SIDE
 TERMINAL BLOCK LABEL
BLOCK "B"

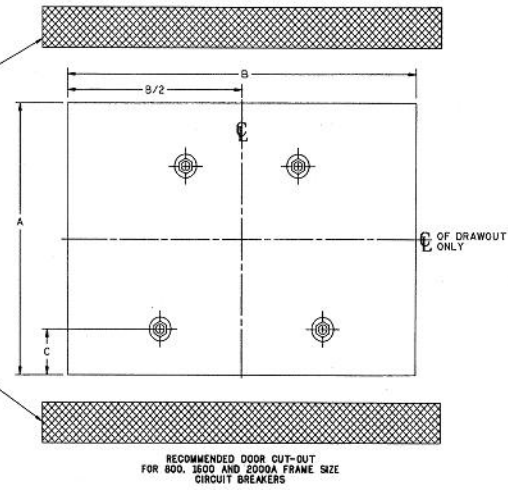
WIRE CHART
 NOTE: WIRE RANGE #18 THRU #12 SOLID OR STRANDED COPPER WIRE. TORQUE: 5LB-IN.



SECONDARY DISCONNECT PLUG (DEDICATED POSITIONS)

LEFT SIDE	RIGHT SIDE
28	19
29	20
30	21
31	22
32	23
33	24
34	25
35	26
36	27

LEFT SIDE RIGHT SIDE
 NOTE: ALL WIRES ON LEFT = AUX. SWITCH WIRES.
 ALL WIRES ON RIGHT = ALL OTHER WIRING.
 *S CORRESPOND TO WIRE CHART
 I.E. *31, 32 RIGHT = SHUNT TRIP



FRAME RATING	BREAKER TYPE	WEIGHT		MINIMUM COMPARTMENT VOLUME	MINIMUM DOOR VENTILATION	STANDARD DOOR CUT-OUT			OPTIONAL DOOR CUT-OUT		
		BREAKER	DRAWOUT SUBSTRUCTURE			A	B	C	A	B	C
800A	STATIONARY MOUNTED	71 LBS* [32.3KG]	N/A	3447 CU.IN. [56486CCU.CM]	NONE	10 [254]	14 [356]	1.69 [42.9]	9.83 [249.7]	13.38 [339.9]	1.605 [40.8]
1600A		79 LBS* [35.9KG]				TRIM PLATE REQUIRED	FLUSH FRONT OR NON-HINGED DOOR CONSTRUCTION- TRIM PLATE MAY BE OMITTED				
2000A		86.4 LBS [37.4 KG] TOTAL 43.2 SO.IN [278.7 SO.CM] TOP 43.2 SO.IN [278.7 SO.CM] BOTTOM				TRIM PLATE REQUIRED	FLUSH FRONT OR NON-HINGED DOOR CONSTRUCTION- TRIM PLATE MAY BE OMITTED				
800A	DRAWOUT MOUNTED	96 LBS* [48.2KG]	34 LBS [24.5KG]	3780 CU.IN. [61943CCU.CM]	NONE	10 [254]	14 [356]	N/A	9.83 [249.7]	13.38 [339.9]	N/A
1600A		125 LBS* [56.8KG]	68 LBS [30.9KG]			TRIM PLATE REQUIRED	FLUSH FRONT OR NON-HINGED DOOR CONSTRUCTION- TRIM PLATE MAY BE OMITTED				
2000A		5670 CU.IN. [92915CCU.CM]	34.2 SO.IN [220.8 SO.CM] TOTAL 29.5 SO.IN [194.3 SO.CM] TOP 4.65 SO.IN [30.0 SO.CM] BOTTOM			TRIM PLATE REQUIRED	FLUSH FRONT OR NON-HINGED DOOR CONSTRUCTION- TRIM PLATE MAY BE OMITTED				

N/A = NOT APPLICABLE
 * ADD 9 LBS [4.1KG] FOR ELECTRICAL OPERATOR

TABLE 1

- NOTES:**
- SEE OUTLINE DRAWING I0054370SH5.
 - BUSBARS OR CABLES SHOULD BE SIZED PER UL891 DEAD-FRONT SWITCHBOARDS STANDARD.
 - DIMENSIONS IN BRACKETS ARE [METRIC].

Industrial Solutions

by **ABB**

POWER BREAK II

CIRCUIT BREAKER WEIGHTS & VENTS INFO

THIRD ANGLE	SHEET#	DWG NO.	DATE	REV
	5 of 19	GEM3025	09/19	02