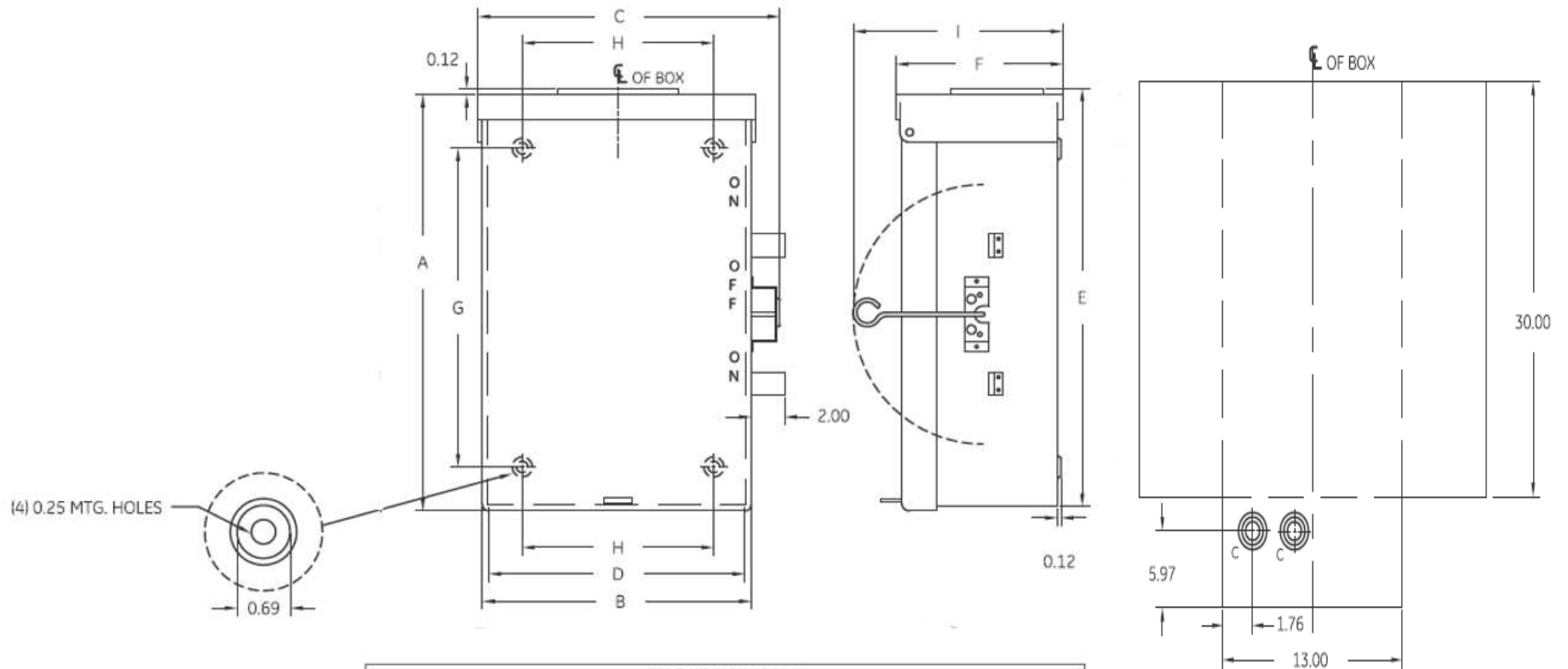


Front View

Right Side View

Knockout View



DIMENSION TABLE												
GCAT NO.	MOD.	FIG	KO VIEW	A	B	C	D	E	F	G	H	I
GS3262G	9	2	2	30.16	13.27	16.75	13.11	30.35	8.47	26.94	9.75	12.07

**Knockouts**

KNOCKOUT TABLE				
SYM.	SIZE	QTY.		
		VIEW 1	VIEW 2	
A	3/4 X 1 X 1 1/4 X 1 1/2 KO	2	-	
B	1 X 1 1/4 X 1 1/2 X 2 KO	2	-	
C	1 X 1 1/2 X 2 X 2 1/2 KO	-	2	

**Notes**

1. ALL DIMENSIONS ARE IN INCHES.
2. ALL DIMENSIONS HAVE ±0.125 TOLERANCE.

**Wire Range**

(1) #6-250 (CU/AL)



MIDWEST GD TRANSFER SWITCH 2P 10K 200A MAIN  
200A STANDBY 240V N3R ALUMINUM ENCL

CAT NO	DWG DATE	REV #
GS3262G	03/23/2017	01