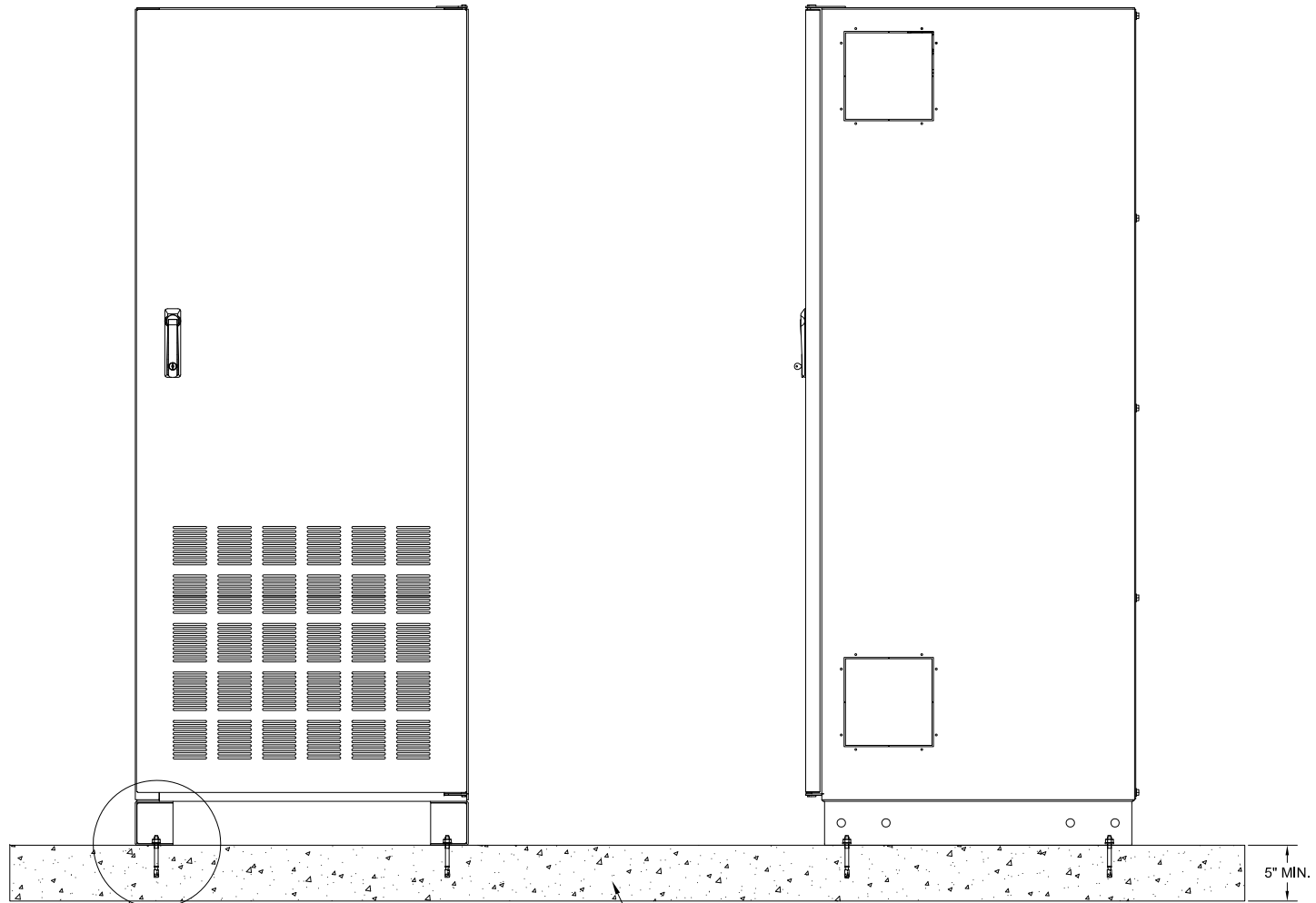


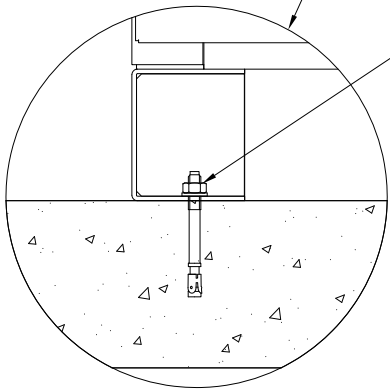
DRAWING # BC41S CBC 2012 CBC 2013 ANCHORING REV 1



5/8"Ø HILTI KWIK BOLT TZ EXPANSION ANCHORS PER ICC ESR-1917
3 1/8" MIN. EMBED. TYP. 4 PLACES

CONCRETE FLOOR
MIN. 2500 PSI

5" MIN.



THE BC41S BATTERY CABINET HAS BEEN CERTIFIED TO THE 2012 EDITION OF THE INTERNATIONAL BUILDING CODE (IBC) AND THE 2013 EDITION OF THE CALIFORNIA BUILDING CODE (CBC). TO MEET IBC & CBC SEISMIC DESIGN CATEGORY F, $S_s = 2.0$ AND IMPORTANCE FACTOR 1.5 THE FOLLOWING CONDITIONS MUST BE MET:

CONCRETE:

- CEMENT AGGREGATES SHALL CONFORM TO ASTM C150 (TYPE II) AND ASTM C33.
- MINIMUM COMPRESSIVE STRENGTH AT 28 DAYS SHALL BE 2500 PSI.
- MINIMUM CONCRETE THICKNESS OF 5" REQUIRED.

ANCHOR BOLTS:

- CABINET MUST BE ANCHORED WITH (4) 5/8"Ø HILTI KWIK BOLT TZ EXPANSION ANCHORS WITH 3 1/8" MIN. EMBED.

INSPECTION:

- SPECIAL INSPECTION BY REGISTERED DEPUTY INSPECTOR REQUIRED FOR THE EXPANSION ANCHOR INSTALLATION PER ICC REPORT ESR-1917.

BC41S BATTERY CABINET			
IBC 2012 SEISMIC DESIGN CATEGORY "F" ANCHORING			
CBC 2013 SEISMIC DESIGN CATEGORY "F" ANCHORING			
DIMENSIONS ARE IN INCHES		INITIALS	DATE
TOLERANCES:		DRAWN JRL	9/5/2013
DECIMALS: .XX ±	ANGLES: ±	CHECKED CH	2/5/2014
MATERIAL: --			
FINISH: --			
CAD GENERATED DRAWING DO NOT MANUALLY UPDATE			
SCALE: NTS	SIZE: A	REV: 1	SHEET 1 OF 1

THE INFORMATION CONTAINED IN THIS DRAWING IS THE SOLE PROPERTY OF C&C POWER, INC. ANY REPRODUCTION WITHOUT THE WRITTEN CONSENT OF C&C POWER, INC IS PROHIBITED.

C&C POWER
ENGINEERED POWER PRODUCTS
WWW.CCPOWER.COM

© 2014 C&C POWER, INC.
ALL RIGHTS RESERVED