

# UNIVERSAL RAIN TIGHT HUB/INSTALLATION INSTRUCTIONS

## Applicable Catalogs:

- B07 (0.75" Hub)
- B10 (1.00" Hub)
- B12 (1.25" Hub)
- B15 (1.50" Hub)
- B20 (2.00" Hub)
- B25 (2.50" Hub)
- U10 (1.00" Hub)
- U12 (1.25" Hub)
- U15 (1.50" Hub)
- U20 (2.00" Hub)
- U25 (2.50" Hub)

## Weather Resistant Aluminum

The National Electrical Code requires use of raintight closing cap or raintight hub on outdoor load centers. This raintight hub is installed on top of the load center. No gasket is required.

**DANGER:** Hazard of electrical shock or burn. Turn off power before working on equipment.

## Instructions

1. Remove and discard factory installed closing cap from the load center.
2. Screw raintight hub onto installed conduit.
3. Hub can be mounted in any of the four positions indicated below (Figure 1).
4. Use the four provided screws to attach hub to the load center.

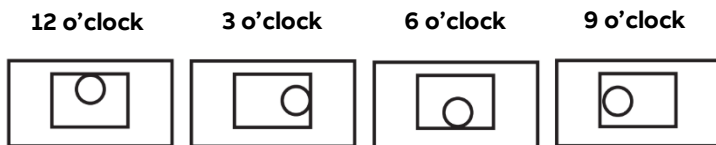


Figure 1

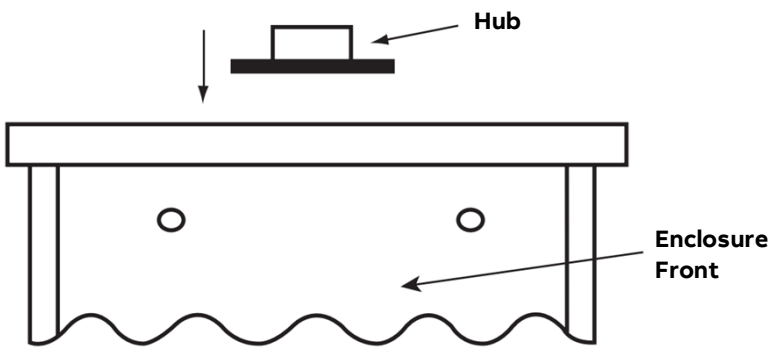


Figure 2



MIDWEST ELECTRIC PRODUCTS INC.  
305 Gregson Drive Cary, NC 27511

MEPI324 REV. A 06 25